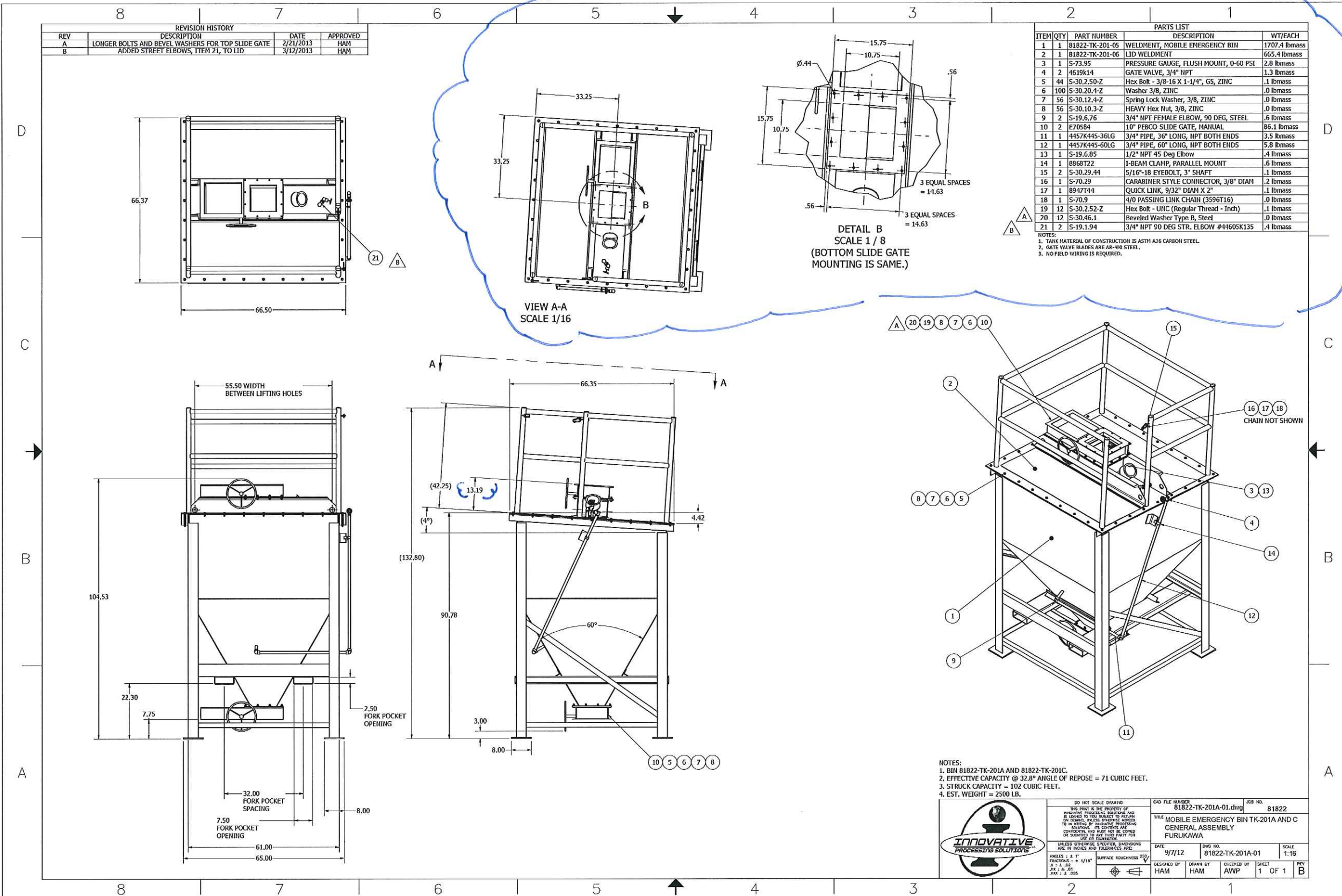


Added

REVISION HISTORY			
REV	DESCRIPTION	DATE	APPROVED
A	LONGER BOLTS AND BEVEL WASHERS FOR TOP SLIDE GATE	2/21/2013	HAM
B	ADDED STREET ELBOWS, ITEM 21, TO LID	3/12/2013	HAM

PARTS LIST				
ITEM	QTY	PART NUMBER	DESCRIPTION	WT/EACH
1	1	81822-TK-201-05	WELDMENT, MOBILE EMERGENCY BIN	1707.4 lbmass
2	1	81822-TK-201-06	LID WELDMENT	665.4 lbmass
3	1	S-73.95	PRESSURE GAUGE, FLUSH MOUNT, 0-60 PSI	2.8 lbmass
4	2	4619K14	GATE VALVE, 3/4" NPT	1.3 lbmass
5	44	S-30.2.50-Z	Hex Bolt - 3/8-16 X 1-1/4", GS, ZINC	.1 lbmass
6	100	S-30.20.4-Z	Washer 3/8, ZINC	.0 lbmass
7	56	S-30.12.4-Z	Spring Lock Washer, 3/8, ZINC	.0 lbmass
8	56	S-30.10.3-Z	HEAVY Hex Nut, 3/8, ZINC	.0 lbmass
9	2	S-19.6.76	3/4" NPT FEMALE ELBOW, 90 DEG, STEEL	.6 lbmass
10	2	E70584	10" PEBCO SLIDE GATE, MANUAL	86.1 lbmass
11	1	4457K445-36LG	3/4" PIPE, 36" LONG, NPT BOTH ENDS	3.5 lbmass
12	1	4457K445-60LG	3/4" PIPE, 60" LONG, NPT BOTH ENDS	5.8 lbmass
13	1	S-19.6.85	1/2" NPT 45 Deg Elbow	.4 lbmass
14	1	8868T22	I-BEAM CLAMP, PARALLEL MOUNT	.6 lbmass
15	2	S-30.29.44	5/16"-18 EYEBOLT, 3" SHAFT	.1 lbmass
16	1	S-70.29	CARABINER STYLE CONNECTOR, 3/8" DIAM	.2 lbmass
17	1	8947T44	QUICK LINK, 9/32" DIAM X 2"	.1 lbmass
18	1	S-70.9	4/D PASSING LINK CHAIN (3596T16)	.0 lbmass
19	12	S-30.2.52-Z	Hex Bolt - UNC (Regular Thread - Inch)	.1 lbmass
20	12	S-30.46.1	Beveled Washer Type B, Steel	.0 lbmass
21	2	S-19.1.94	3/4" NPT 90 DEG STR. ELBOW #44605K135	.4 lbmass

NOTES:
 1. TANK MATERIAL OF CONSTRUCTION IS ASTM A36 CARBON STEEL.
 2. GATE VALVE BLADES ARE A304 STEEL.
 3. NO FIELD WIRING IS REQUIRED.



NOTES:
 1. BIN 81822-TK-201A AND 81822-TK-201C.
 2. EFFECTIVE CAPACITY @ 32.8° ANGLE OF REPOSE = 71 CUBIC FEET.
 3. STRUCK CAPACITY = 102 CUBIC FEET.
 4. EST. WEIGHT = 2500 LB.

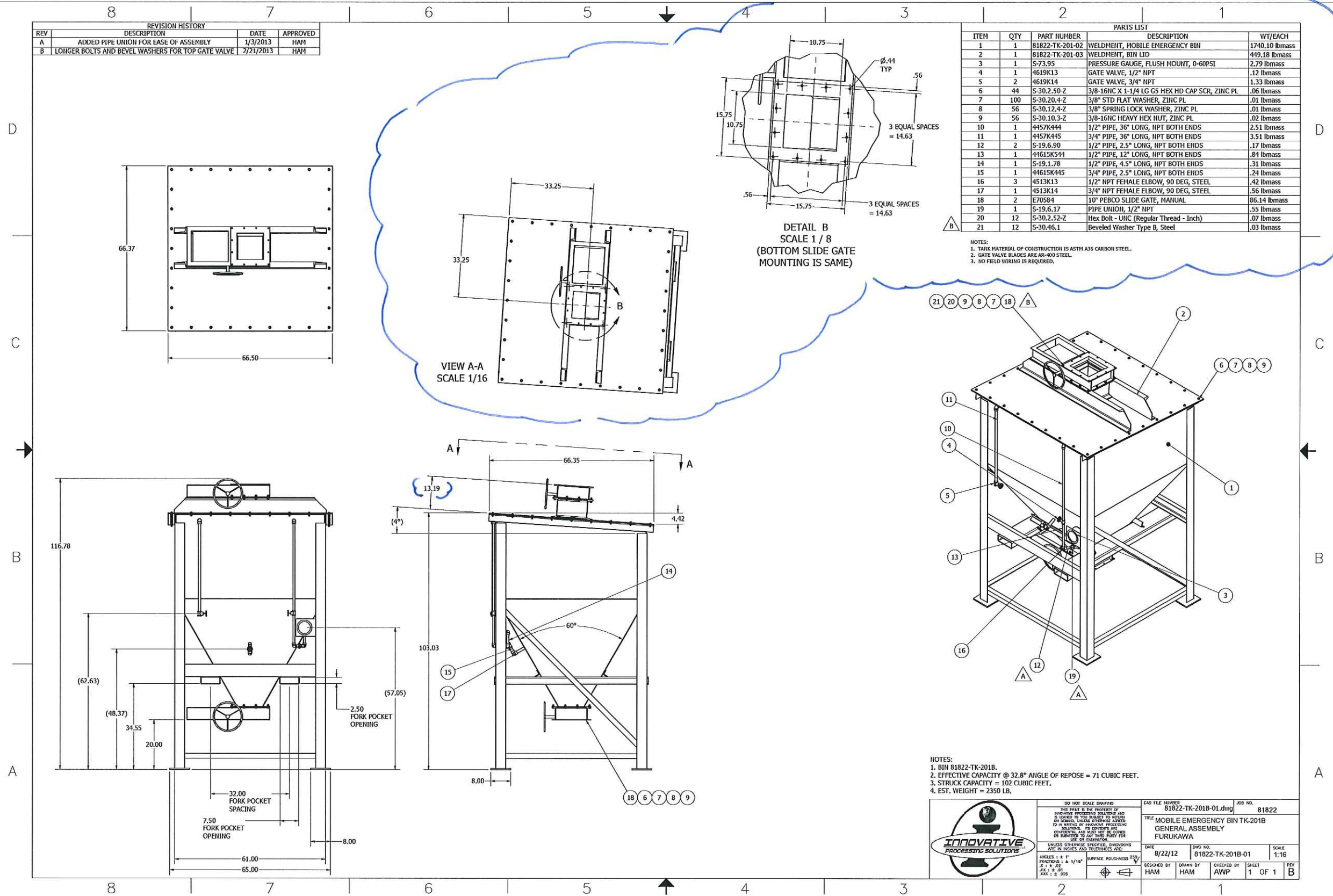
	DO NOT SCALE DRAWING THIS PRINT IS THE PROPERTY OF INNOVATIVE PROCESSING SOLUTIONS AND IS LOANED TO YOU SUBJECT TO RETURN TO INNOVATIVE PROCESSING SOLUTIONS. PLEASE ADVISE IMMEDIATELY IF YOU LOAN THIS DRAWING TO ANY OTHER PARTY FOR USE OR CONSTRUCTION.	CAD FILE NUMBER 81822-TK-201A-01.dwg	JOB NO. 81822
	UNLESS OTHERWISE SPECIFIED, DIMENSIONS ARE IN INCHES AND TOLERANCES ARE: ANGLES: ± 1° FINISHES: ± 1/16" SURFACE ROUGHNESS: 250	TITLE MOBILE EMERGENCY BIN TK-201A AND C GENERAL ASSEMBLY FURUKAWA	DATE 9/7/12
DESIGNED BY HAM	DRAWN BY HAM	CHECKED BY AWP	SCALE 1:16
SHEET 1 OF 1		REV B	

Added.

REVISION HISTORY			
REV	DESCRIPTION	DATE	APPROVED
A	ADDED PIPE UNION FOR EASE OF ASSEMBLY	1/3/2013	HAM
B	LONGER BOLTS AND BEVEL WASHERS FOR TOP GATE VALVE	2/21/2013	HAM

PARTS LIST				
ITEM	QTY	PART NUMBER	DESCRIPTION	WT/EACH
1	1	81822-TK-201-02	WELDMENT, MOBILE EMERGENCY BIN	1740.10 lbmass
2	1	81822-TK-201-03	WELDMENT, BIN LID	449.18 lbmass
3	1	S-73.95	PRESSURE GAUGE, FLUSH MOUNT, 0-60PSI	2.79 lbmass
4	1	4619K13	GATE VALVE, 1/2" NPT	.12 lbmass
5	2	4619K14	GATE VALVE, 3/4" NPT	1.33 lbmass
6	44	S-30.2.50-Z	3/8-16UNC X 1-1/4 LG 65 HEX HD CAP SCR, ZINC PL	.06 lbmass
7	100	S-30.20.4-Z	3/8" STD FLAT WASHER, ZINC PL	.01 lbmass
8	56	S-30.12.4-Z	3/8" SPRING LOCK WASHER, ZINC PL	.01 lbmass
9	56	S-30.10.3-Z	3/8-16UNC HEAVY HEX NUT, ZINC PL	.02 lbmass
10	1	4457K444	1/2" PIPE, 36" LONG, NPT BOTH ENDS	2.51 lbmass
11	1	4457K445	3/4" PIPE, 36" LONG, NPT BOTH ENDS	3.51 lbmass
12	2	S-19.6.90	1/2" PIPE, 2.5" LONG, NPT BOTH ENDS	.17 lbmass
13	1	44615K544	1/2" PIPE, 12" LONG, NPT BOTH ENDS	.84 lbmass
14	1	S-19.1.78	1/2" PIPE, 4.5" LONG, NPT BOTH ENDS	.31 lbmass
15	1	44615K445	3/4" PIPE, 2.5" LONG, NPT BOTH ENDS	.24 lbmass
16	3	4513K13	1/2" NPT FEMALE ELBOW, 90 DEG, STEEL	.42 lbmass
17	1	4513K14	3/4" NPT FEMALE ELBOW, 90 DEG, STEEL	.56 lbmass
18	2	E70584	10" PEBCO SLIDE GATE, MANUAL	86.14 lbmass
19	1	S-19.6.17	PIPE UNION, 1/2" NPT	.55 lbmass
20	12	S-30.2.52-Z	Hex Bolt - UNC (Regular Thread - Inch)	.07 lbmass
21	12	S-30.46.1	Beveled Washer Type B, Steel	.03 lbmass

NOTES:
 1. TANK MATERIAL OF CONSTRUCTION IS ASTH A36 CARBON STEEL.
 2. GATE VALVE BLADES ARE A8-900 STEEL.
 3. NO FIELD WIRING IS REQUIRED.



NOTES:
 1. BIN 81822-TK-201B.
 2. EFFECTIVE CAPACITY @ 32.8° ANGLE OF REPOSE = 71 CUBIC FEET.
 3. STRUCK CAPACITY = 102 CUBIC FEET.
 4. EST. WEIGHT = 2350 LB.

	DO NOT SCALE DRAWING THIS PRINT IS THE PROPERTY OF INNOVATIVE PROCESSING SOLUTIONS AND IS LOANED TO YOU SUBJECT TO RETURN TO OR BEING DESTROYED BY INNOVATIVE PROCESSING SOLUTIONS. ITS CONTENTS ARE UNCLASSIFIED, AND MAY BE COMBINED OR SUBMITTED TO ANY THIRD PARTY FOR USE OR DISSEMINATION.	CAD FILE NUMBER: 81822-TK-201B-01.dwg JOB NO.: 81822
	UNLESS OTHERWISE SPECIFIED, DIMENSIONS ARE IN INCHES AND TOLERANCES ARE: ANGLES: ± 0.1° FRACTIONS: ± 1/16" DECIMALS: ± 0.01 DECIMALS: ± 0.005	DATE: 8/22/12 DWG NO.: 81822-TK-201B-01 SCALE: 1:16
DESIGNED BY: HAM DRAWN BY: HAM CHECKED BY: AWP	SHEET: 1 OF 1 REV: B	