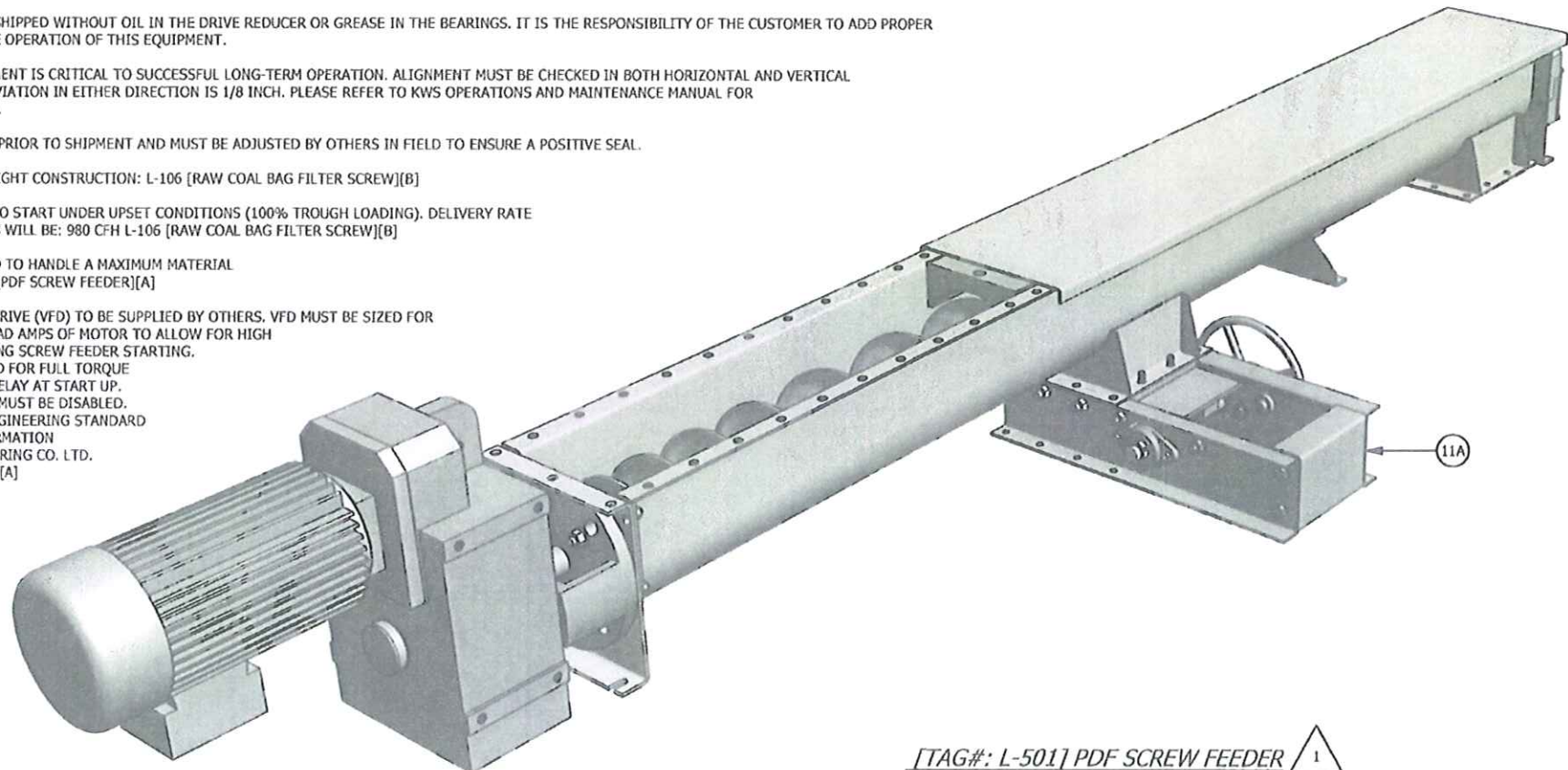


GENERAL NOTES:

- 1- SHOP ASSEMBLED; MATCH MARK AND KNOCK DOWN ONLY AS REQUIRED TO SHIP.
- 2- FINISH REQUIREMENTS:
 - A- SCREW ASSEMBLY: (KWS INDUSTRIAL FINISH 1)
WELD: WELD SPATTER AND SLAG REMOVED, 40-50 GRIT FINISH, PITS AND CREVICES PERMISSIBLE (CEMA II)
FLIGHT SURFACE: MILL FINISH, NO GRINDING ON STEEL SURFACES
 - B- TROUGH ASSEMBLY: INTERIOR AND EXTERIOR (KWS INDUSTRIAL FINISH 1T)
WELD: SPATTER AND SLAG REMOVED, 40-50 GRIT FINISH, PITS AND CREVICES PERMISSIBLE (CEMA II)
TROUGH SURFACE: MILL FINISH, NO GRINDING ON STEEL SURFACES
- 3- PAINT AS FOLLOWS: UNPAINTED CARBON STEEL SURFACES ONLY.
 - A- SURFACE PREPARATION: HAND TOOL CLEAN PER SSPC-SP2
 - B- FINISH COAT: KWS GREY ENAMEL, 2-3 MILS MINIMUM DFT.
 - C- ALL BEARINGS, SEALS, DRIVE COMPONENTS AND OTHER PURCHASED COMPONENTS WILL BE FURNISHED WITH MANUFACTURERS STANDARD PAINT SYSTEM. SAFETY GUARDS TO BE SAFETY YELLOW.
- 4- DESIGN PARAMETERS:
 - A- DESIGN TEMPERATURE: 200°F
 - B- DESIGN PRESSURE: L-501 [PDF SCREW FEEDER][A]: ATMOSPHERIC
L-106 [RAW COAL BAG FILTER SCREW][B]: 1/2" PSI
- 5- TAG AS FOLLOWS:
 - A- TAG: 4IN. X 6IN X 1/32IN THK ALUMINUM.
 - B- LOCATION: AT DRIVE END IN CLEARLY VISIBLE LOCATION.
 - C- LETTERING: 3/16 IN. MINIMUM HEIGHT.
 - D- INFORMATION: KWS STANDARD.
 - E- SLIDE GATE ON A TO BE TAGGED: L-501-SG 1
- 6- EQUIPMENT SUPPLIED BY KWS MEETS ALL APPLICABLE OSHA REQUIREMENTS. THE OWNER OR END USER IS RESPONSIBLE FOR PROVIDING PROPER GUARDING OF ROTATING SHAFTS IN THEIR FACILITY BASED ON THE LOCATION OF THE EQUIPMENT AND THE POTENTIAL FOR A HAZARD.
- 7- THE GEAR REDUCER BREATHERS MUST BE CHECKED IN THE FIELD AFTER INSTALLATION FOR PROPER ORIENTATION AND OPERATION. THE BREATHER ACTS AS A CHECK-VALVE TO ALLOW THE REDUCER TO DISSIPATE INTERNAL PRESSURE AND SHOULD BE LOCATED ON THE TOP OF THE REDUCER. ANY BLOCKAGE OF THE BREATHER MUST BE REMOVED BEFORE OPERATING THE EQUIPMENT.
- 8- THIS EQUIPMENT IS BEING SHIPPED WITHOUT OIL IN THE DRIVE REDUCER OR GREASE IN THE BEARINGS. IT IS THE RESPONSIBILITY OF THE CUSTOMER TO ADD PROPER LUBRICATION PRIOR TO THE OPERATION OF THIS EQUIPMENT.
- 9- PROPER EQUIPMENT ALIGNMENT IS CRITICAL TO SUCCESSFUL LONG-TERM OPERATION. ALIGNMENT MUST BE CHECKED IN BOTH HORIZONTAL AND VERTICAL DIRECTIONS. MAXIMUM DEVIATION IN EITHER DIRECTION IS 1/8 INCH. PLEASE REFER TO KWS OPERATIONS AND MAINTENANCE MANUAL FOR ADDITIONAL INFORMATION.
- 10- SEALS ARE NOT ADJUSTED PRIOR TO SHIPMENT AND MUST BE ADJUSTED BY OTHERS IN FIELD TO ENSURE A POSITIVE SEAL.
- 11- DUST TIGHT & WEATHER TIGHT CONSTRUCTION: L-106 [RAW COAL BAG FILTER SCREW][B]
- 12- EQUIPMENT IS DESIGNED TO START UNDER UPSET CONDITIONS (100% TROUGH LOADING). DELIVERY RATE UNDER UPSET CONDITIONS WILL BE: 980 CFH L-106 [RAW COAL BAG FILTER SCREW][B]
- 13- FEEDER ASSEMBLY IS SIZED TO HANDLE A MAXIMUM MATERIAL HEAD LOAD OF: 6 FT L-501 [PDF SCREW FEEDER][A]
- 14- AC VARIABLE FREQUENCY DRIVE (VFD) TO BE SUPPLIED BY OTHERS. VFD MUST BE SIZED FOR AT LEAST 2 TIMES FULL-LOAD AMPS OF MOTOR TO ALLOW FOR HIGH INRUSH OF CURRENT DURING SCREW FEEDER STARTING. VFD MUST BE PROGRAMMED FOR FULL TORQUE WITH LEAST AMOUNT OF DELAY AT START UP. VFD SOFT-START FEATURE MUST BE DISABLED. PLEASE REFER TO CEMA ENGINEERING STANDARD 351-2007. FOR MORE INFORMATION CONTACT KWS MANUFACTURING CO. LTD. L-501 [PDF SCREW FEEDER][A]



[TAG#: L-501] PDF SCREW FEEDER 1
ISO VIEW

BILL OF MATERIALS		
ITEM	QTY	DESCRIPTION
A	ONE	6" DIA. X 7'-6" LG. SCREW FEEDER TO METER 65 CFH OF 46.6 PCF (3/8" MAX LUMPSIZE) UNIFORMLY FED COAL AT APPROXIMATELY 95% TROUGH LOADING. SHOP ASSEMBLED AND CONSISTING OF:
1A	1	SPL, 6" DIA. X 1/4" THK. (304SS) X VARIABLE PITCH X 7'-4" LG. RIGHT HAND, SECTIONAL SCREW, SKIP WELDED TO A 2" SCH 40 PIPE (304SS). FIRST 6" TO BE 3" PITCH, FOLLOWED BY 8" OF 4" PITCH, FOLLOWED BY 5'-6 1/2" OF 6" PITCH. BUSHED AND DRILLED BOTH ENDS FOR A 1 1/2" DIA. 2-BOLT COUPLING. DISCHARGE END TO HAVE 7 1/2" OF BARE PIPE.
2A	4	CB112-2, 1/2" DIA. X 3" LG (C.S.)(GRADE 5) COUPLING BOLT AND LOCKNUT.
3A	1	TEFO6112U-BBRB, 6" DIA X 1 1/2" DIA. (C.S.) U-TROUGH END w/ FOOT. FITTED WITH:
	1	WPS-112, 1 1/2" DIA. WASTE PACK SEAL WITH LIP SEAL & WASTE PACKING.
	1	EBF112-BB, 1 1/2" DIA. BALL BEARING FLANGE UNIT
	1	ES112-BB-WPS, 1 1/2" DIA. X 10 3/8" LG. (C-1045) 2-BOLT END SHAFT, DRILL AND TAP FOR 10-32 UNF X 1/2" DEEP (MIN).
	1	SCP2000, ELECTRO SENSOR / ZERO SPEED SWITCH, NEMA 7 & 9, RATED FOR CLASS 1, DIV. 2, GR.C & CLASS 2, DIV. 2, GR.F w/ MOUNTING PLT.
4A	1	SPL, 6" DIA X 1 1/2" DIA. X 3/16" THK. (C.S.) STUDDER U-TROUGH END w/ FOOT. (PER DETAIL).
5A	1	TUF610, 6" DIA. X 10GA. (C.S.) X 7'-6" LG. FORMED FLANGE U-TROUGH WITH 3/16" THK. (C.S.) PLATE END FLANGES. FITTED WITH:
	2	DSP612U-P, 7" INS. SQ. X 12GA. (C.S.) DISCHARGE SPOUT.
6A	1	SAD6, 6" (C.S.) SADDLE FOR U-TROUGH.
7A	1	COV614-U-FL, 6" X 14GA. (C.S.) X 4'-11 7/8" LG. FLANGED COVER FOR U-TROUGH BOLTED ON APPROX. 12" CENTERS.
8A	1	COV6GAU-SH-R1, 6" DIA. X 12 GA (C.S.) X 1'-0" LG. BOLT-IN SHROUD w/ 3/16" THK. (C.S.) BATTEN BAR w/ (1) 3/8-16 UNC RIVNUT.
9A	LOT	3/16" THK. NITRILE BLEND (IV1) COVER GASKET, SILICONE CAULK FOR PLATE END FLANGES AND (ZINC CARBON STEEL) ASSEMBLY BOLTS.
10A	ONE	1 HP 20 RPM CLASS II SCREW CONVEYOR DRIVE MOUNTED @ 12 O'CLOCK BY KWS AND CONSISTING OF: QUANTIS MW683CN140TC/155.87A1H11.500X7.09B14MM REDUCER, 1 1/2" DIA. DRIVE SHAFT, MOTOR MOUNT, SCA SCREW CONVEYOR ADAPTOR (WITH ADJUSTABLE PACKING KIT) AND HARDWARE KIT. 1 HP 1750 RPM 3/60/230-460V INTEGRAL TEXP MOTOR WITH 143-T FRAME RATED FOR CLASS 1, DIV. 2, GR.C & CLASS 2, DIV. 2, GR.F.

SHIP LOOSE ITEMS		
ITEM	QTY	DESCRIPTION
11A	ONE	RPG610FH, 6" DIA. X 10 GA (C.S.) RACK & PINION GATE. (TAG#: L-501-SG)

FULL RELEASE 10/26/12

REV	DATE	DESIGNER	DESCRIPTION
1	10/24/12	NJR	REVISED PER CUSTOMER COMMENTS

[TAG#: L-501] PDF SCREW FEEDER

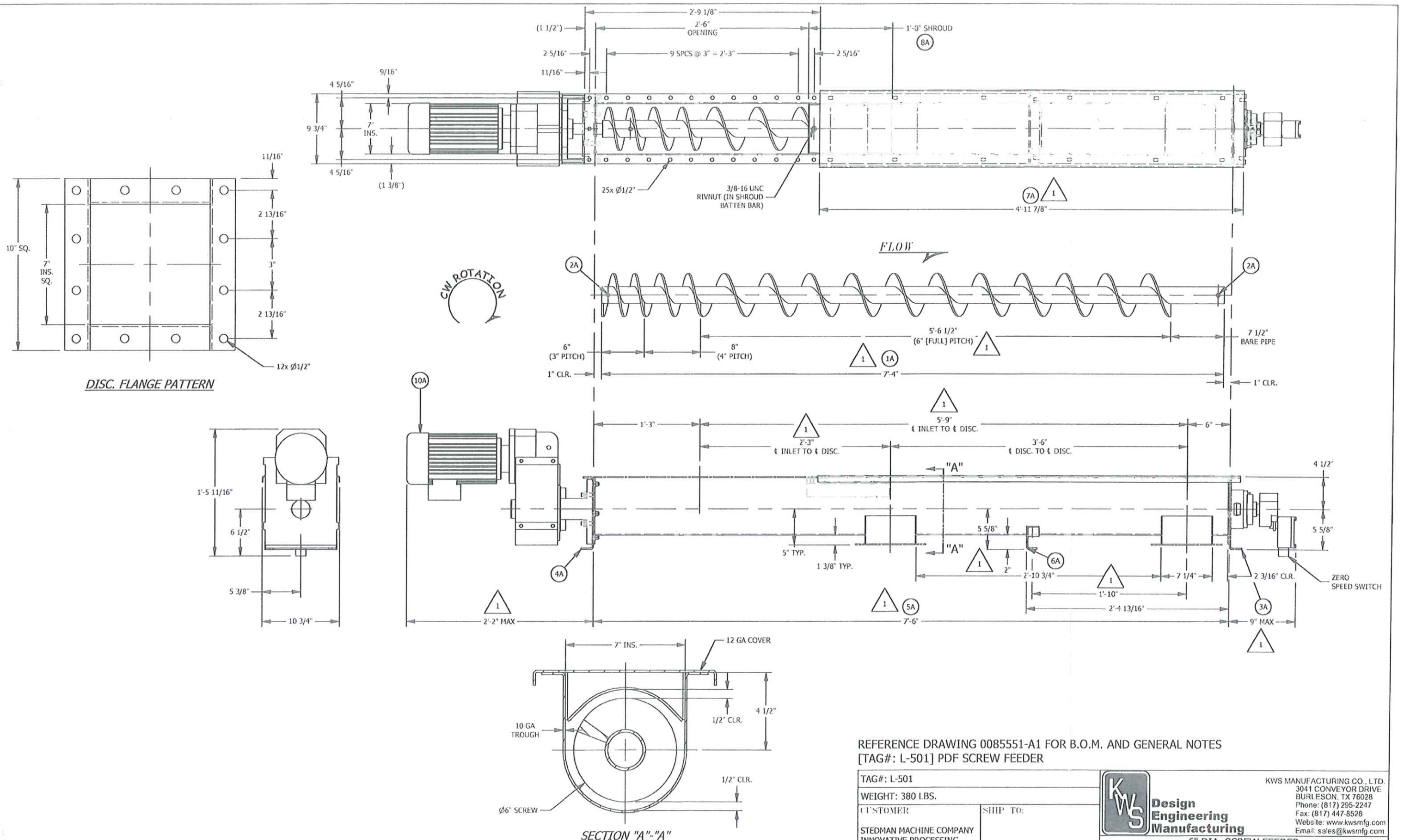
TAG#: L-501	WEIGHT: 380 LBS.
CUSTOMER	SHIP TO:
STEDMAN MACHINE COMPANY INNOVATIVE PROCESSING SOLUTION 129 FRANKLIN STREET AURORA, IN 47001	T.B.D.

KWS MANUFACTURING CO., LTD.
3041 CONVEYOR DRIVE
BURLESON, TX 76028
Phone: (817) 295-2247
Fax: (817) 447-8528
Website: www.kwsmfg.com
Email: sales@kwsmfg.com

6" DIA. SCREW FEEDER
[TAG#: L-501] PDF SCREW FEEDER
B.O.M & GENERAL NOTES

DESIGNER NJR	P.M. APM	CHECKED BY am	CREATION DATE 10/18/2012	DRAWING NO. 0085551-A1
-----------------	-------------	------------------	-----------------------------	---------------------------

106966



FULL RELEASE 10/26/12

REV	DATE	DESIGNER	DESCRIPTION
1	10/24/12	NJR	REVISED PER CUSTOMER COMMENTS

REFERENCE DRAWING 0085551-A1 FOR B.O.M. AND GENERAL NOTES
 [TAG#: L-501] PDF SCREW FEEDER

TAG#: L-501	WEIGHT: 380 LBS.
CUSTOMER	SHIP TO:
STEDMAN MACHINE COMPANY INNOVATIVE PROCESSING SOLUTION 129 FRANKLIN STREET AURORA, IN 47001	T.B.D.

KWS Design Engineering Manufacturing

KWS MANUFACTURING CO., LTD.
 3041 CONVEYOR DRIVE
 BURLESON, TX 76028
 Phone: (817) 295-2247
 Fax: (817) 447-8528
 Website: www.kwsmfg.com
 Email: sales@kwsmfg.com

6" DIA. SCREW FEEDER
 [TAG#: L-501]
PDF SCREW FEEDER

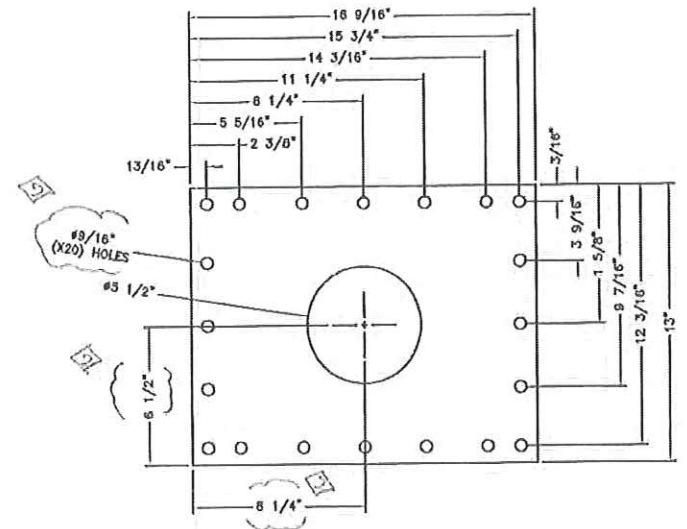
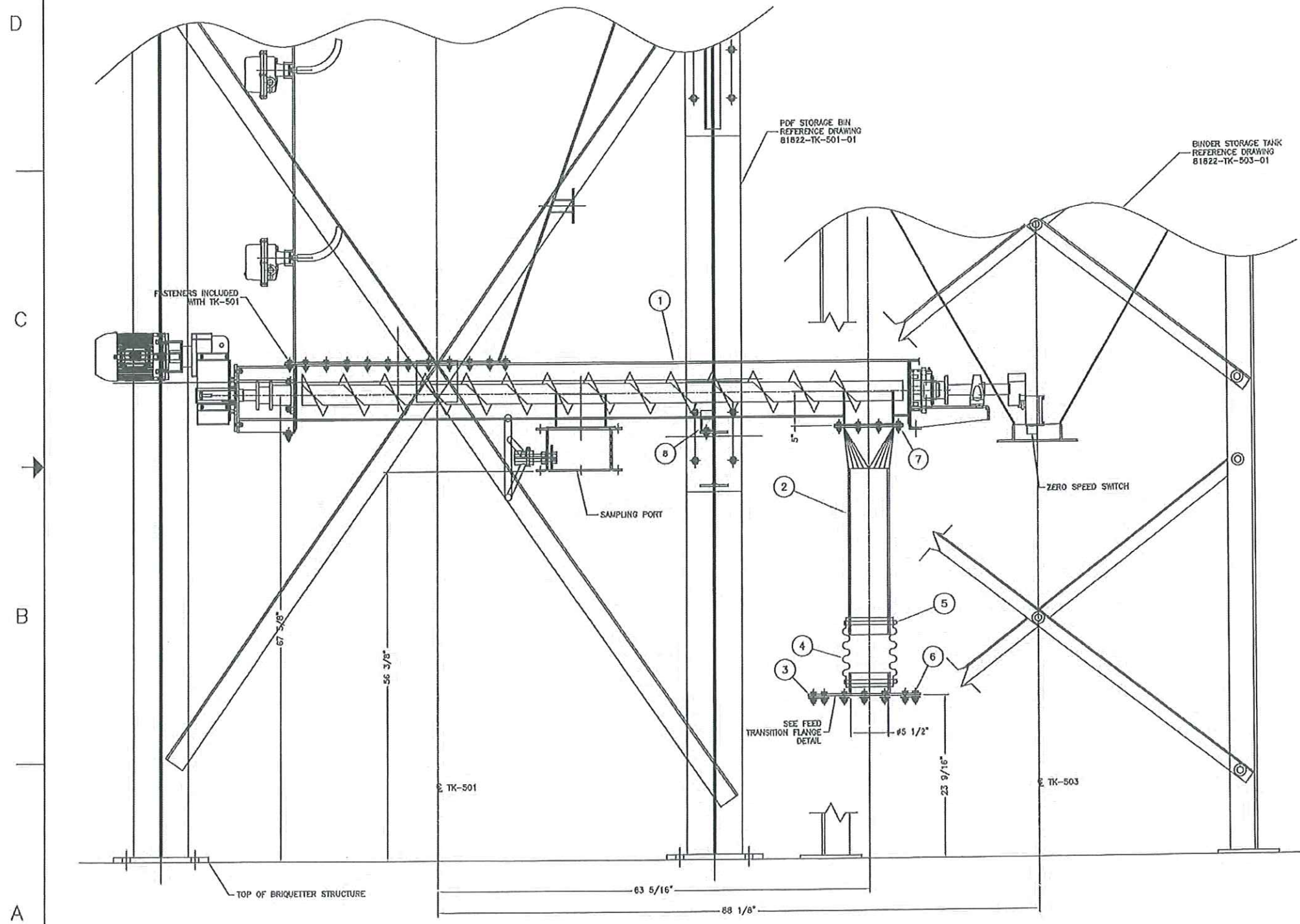
DESIGNER NJR	P.M. APM	CHECKED BY am	CREATION DATE 10/18/2012	DRAWING NO 0085551-A
-----------------	-------------	------------------	-----------------------------	-------------------------

106966

SDP M360-00229 rev.2

EQUIPMENT LIST				
ITEM	QTY	DESCRIPTION	DRAWING	WEIGHT
1	1	L-501 PDF SCREW FEEDER	L-501	-
2	1	L-501 DISCHARGE TRANSITION - ASTM A36 CARBON STEEL	81822-L-501-02	62
3	1	X-501 FEEDER LID - ASTM A36 CARBON STEEL	81822-L-501-03	22
4	1	6"x10 3/4" BLACK CORRUGATED SOCK	E70594	-
5	2	WORM DRIVE CLAMP	8322937	1
6	22	3/8"-16HG X 1-1/2" QRS HNGS W/ 2FW & 1H	-	1
7	12	1/2"-11HG X 2" QRS HNGS W/ FW & 1H	-	1
8	1	CONVEYOR SUPPORT SADDLE	SAD3	3
TOTAL WEIGHT				-

NOTES:
 1. SPEED SWITCH MUST BE FIELD-WIRED.
 2. MATERIAL OF CONSTRUCTION:
 TROUGH - ASTM A36 CARBON STEEL
 SCREW - 304 STAINLESS STEEL



FEED TRANSITION FLANGE
 3" = 1' 0"
 (1) REQ'D

ORIGINAL DOCUMENT
 NOV 11 2013

L-501 ASSEMBLY
 1 1/2" = 1' 0"
 (1) REQ'D

AS	REV	ECN	DESCRIPTION	DATE	BY
AS	B	-	ADDITION OF FLANGE DETAIL	8-5-2013	JTL
AS	A	-	CORRECTED LOCATION OF TK-503	3-16-2013	AWP



DO NOT SCALE DRAWING		DO FILE NUMBER	JOB NO.
THIS PRINT IS THE PROPERTY OF INNOVATIVE PROCESSING SOLUTIONS AND IS LOANED TO YOU. PLEASE RETURN TO ORIGINAL SOURCE OR RETURN TO A MEMBER OF INNOVATIVE PROCESSING SOLUTIONS. THIS DOCUMENT AND ALL INFORMATION CONTAINED HEREIN ARE NOT TO BE COPIED OR REPRODUCED IN ANY MANNER WITHOUT THE WRITTEN PERMISSION OF INNOVATIVE PROCESSING SOLUTIONS.		81822-L-501-01 REV B	81822
TITLE		DATE	SCALE
L-501 PDF SCREW FEEDER PDF SCREW FEEDER ASSEMBLY FURUKAWA		6/5/13	NOTED
DESIGNED BY	DRAWN BY	CHECKED BY	SHEET
JTL	JTL	AWP	1 OF 1
REV	BY	DATE	
			B

106966