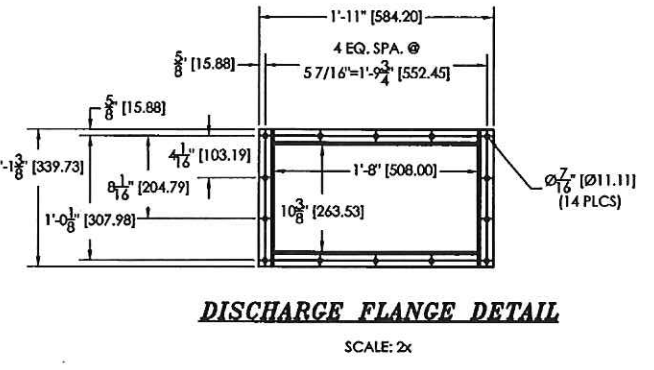
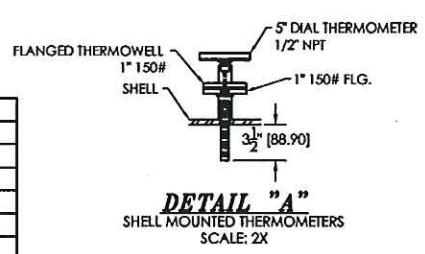


10 HP DRIVE SPECIFICATION
MOTOR: 10 HP TEFC, 460/60/3, CL. 1 DIV. 2 GR. D, INVERTOR DUTY
REDUCER: REXNORD PLANETGEAR - ALIAS, 32,000 LB-IN TORQUE, 55 RPM OUT
COUPLING: FALK STEELFLEX - SIZE 1050T w/ 1 7/8" & 1 3/8" BORES

NOZZLE SCHEDULE				
MARK	QTY.	SIZE	TYPE	SERVICE
A	1	6"	ANSI 150# R.F. FLANGE	PRODUCT FEED
B	1	1/2"	ANSI 150# R.F. FLANGE	WATER SPRAY INLET
C	1	6"	ANSI 150# R.F. FLANGE	VENT
D	1	10" x 20"	FAB. FLANGE SEE DETAIL	PRODUCT DISCHARGE
M	1	2"	ANSI 150# R.F. FLANGE	COOLING WATER INLET
P	1	2"	ANSI 150# R.F. FLANGE	COOLING WATER OULET
Q	1	1"	ANSI 150# R.F. FLANGE	NITROGEN INLET
R	1	1 1/2"	ANSI 150# R.F. FLANGE	NOZZLE FOR THERMOCOUPLE



MATERIALS OF CONSTRUCTION
-TIRES SHALL BE AISI 4140 F.S. HT. TREATED TO 240-280 BHN.
-RING GEAR SHALL BE AISI 4140 F.S. TREATED TO 280-320 BHN.
-PINION GEAR SHALL BE AISI 4340 F.S. H.T. TREATED TO 340-380 BHN.
-TRUNNION ROLLERS SHALL BE AISI 4340 F.S. HARDENED TO 300-350 BHN
-SHELL SHALL BE 1/2" SA-516 GR.70 STEEL
-OUTER TUBES - (14) 4" SCH. 80, A-106B PIPE (4.5" O.D. x 0.337" THICK)
-INNER TUBES - (14) 2 1/2" SCH. 40, A-106B PIPE (2.875" O.D. x 0.203" THICK)
-FEED/DISCHARGE HOUSING SHALL BE SA-516 GR. 70 STEEL
-WATER DISTRIBUTION MANIFOLD SHALL BE SA-516 GR.70 STEEL

MECHANICAL SPECIFICATIONS
ROTARY WATER TUBE COOLER/QUENCHER
HEAT TRANSFER AREA - 495 SQ. FT.
SLOPE - 1:100

FOR: 1. Approval
2. Resubmitted Approval
3. Certified

Company: _____
Authorizing Name: _____
Initial _____
Drawing IS Approved _____
Drawing IS Approved as Noted Resubmitted NOT Necessary _____
Drawing IS Approved as Noted Resubmitted IS Necessary _____
Resubmit with Corrections _____

LOUISVILLE DRYER COMPANY
1100 INDUSTRIAL BLDG.
LOUISVILLE, KY 40219

KL-402

LSK - QUENCHER #2
38" DIA. X 30'-0" ROTARY QUENCHER
GENERAL ARRANGEMENT

Louisville Dryer Company
1100 INDUSTRIAL BLDG.
LOUISVILLE, KY 40219-1834 USA
TELEPHONE (502) 699-3636
FAX (502) 699-9028

DWG. BY: BB DATE: 7/07/12
CHK. BY: _____
APPROVED BY: _____

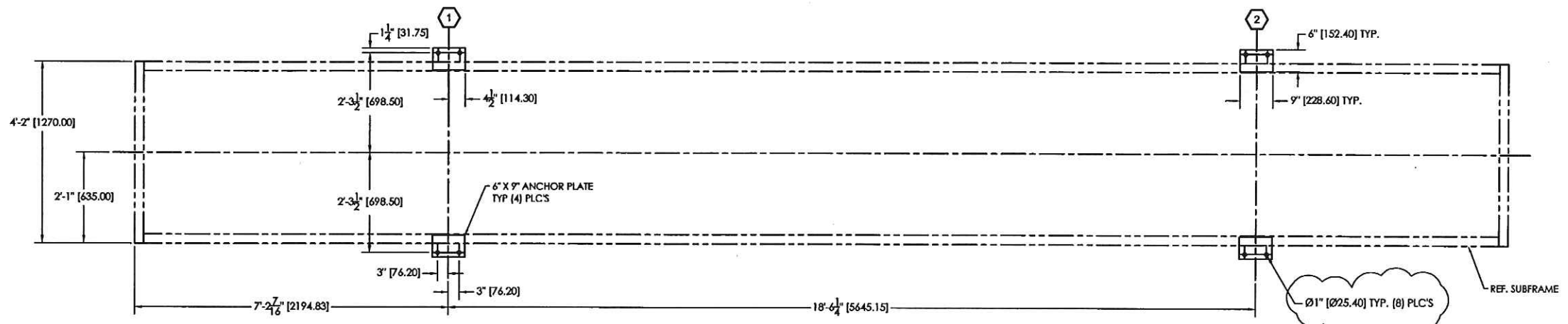
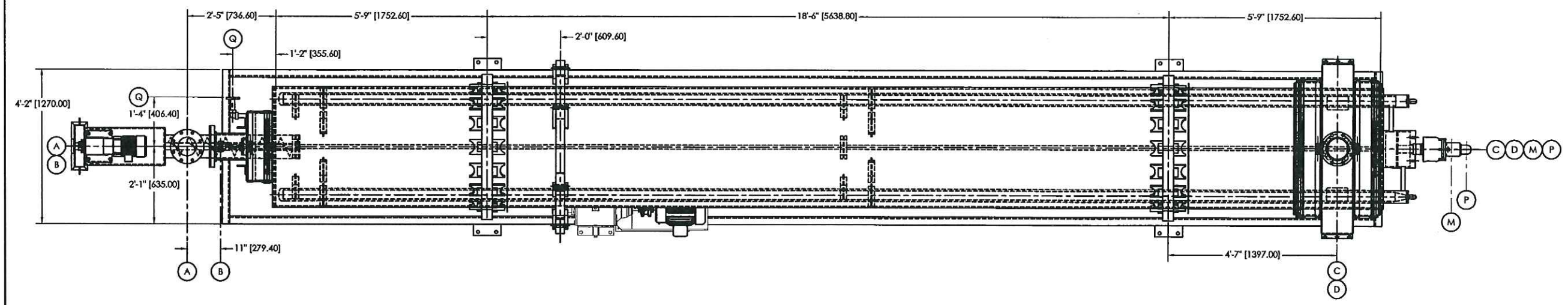
SCALE: NONE
DWG. # 100C-24
SHT. # 1 OF 2

REV. NO.	DATE	BY	APPV.	DESCRIPTION
5	2/21/13	BB		CHANGE TIRE SUPPORT TYPE
4	12/17/12	BB		UPDATE SPRAY NOZZLE NOTES
3	8/13/12	BB		UPDATE PER CUSTOMER COMMENTS

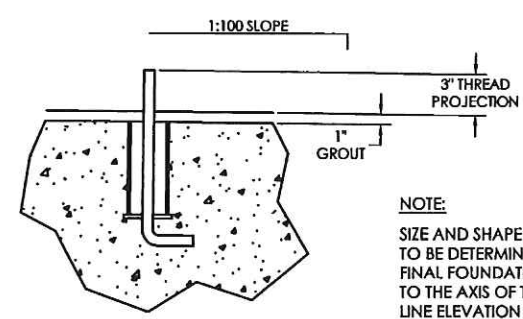
TOLERANCES UNLESS OTHERWISE NOTED

WHOLE NUMBER DIM.	±0.125"	ANGULAR DIM.	±1/2°
FRACTIONAL DIM.	±0.005"	DECIMAL DIM. (XXX)	±0.010"
		(XXX)	±0.005"

NOTICE
THE INFORMATION CONTAINED HEREIN IS PROPRIETARY TO LOUISVILLE DRYER COMPANY AND SHALL NOT BE REPRODUCED OR DISCLOSED IN WHOLE OR IN PART, NOR USED FOR ANY DESIGN OR MANUFACTURING PURPOSE UNLESS AUTHORIZED IN WRITING BY LOUISVILLE DRYER COMPANY



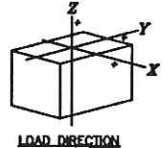
ANCHOR PLAN VIEW



TYPICAL ANCHOR BOLT SECTION FOR DRYER SUPPORT PIERS MARK 1 & 2.

NOTE:
ANCHOR BOLTS BY OTHERS

NOTE:
SIZE AND SHAPE OF DRYER SUPPORT FOUNDATIONS TO BE DETERMINED BY OTHERS. TOP SURFACE OF FINAL FOUNDATIONS SHOULD BE PITCHED PARALLEL TO THE AXIS OF THE DRYER AS SHOWN. DATUM LINE ELEVATION SHOWN IS FOR REFERENCE ONLY. FINAL FOUNDATION ELEVATIONS, WHEN ESTABLISHED, SHOULD ALLOW 1" FOR SHIMMING AND GROUTING.



LOAD CHART					
TOTAL LOAD (LIVE + DEAD LOADS) ACTING @ STRUCTURE BASE					
MARK	LOAD SHOWN IS THE WEIGHT ON:	EMPTY (DEAD LOAD)		OPERATING (DEAD + LIVE LOAD)	
		VERTICAL KIPS [METRIC TONS] Z-DIR	VERTICAL KIPS [METRIC TONS] Z-DIR	SHEAR KIPS [METRIC TONS] X-DIR	SHEAR KIPS [METRIC TONS] Y-DIR
1	FREE END TRUNNION SUPPORT	-10.73 [-4.87]	-12.10 [-5.40]	-0.12 [-0.05]	-
2	THRUST END TRUNNION SUPPORT	-11.37 [-5.18]	-12.74 [-5.78]	-0.13 [-0.06]	-

"-" INDICATES ZERO OR NEGLIGIBLE FORCE.

REV. NO.	DATE	BY	APPV.	DESCRIPTION
4	2/14/13	BB		REVISE ANCHOR HOLES PER AS BUILT
3	9/25/12	BB		UPDATE OPERATING LOADS
2	8/13/12	BB		UPDATE PER CUSTOMER COMMENTS

TOLERANCES UNLESS OTHERWISE NOTED			
WHOLE NUMBER DIA.	11/16	ANGULAR DIA.	1/2°
FRACTIONAL DIA.	11/16	DECIMAL DIA. (XX)	±0.010
		(XXX)	±0.005

NOTICE: THE INFORMATION CONTAINED HEREIN IS PROPRIETARY TO LOUISVILLE DRYER COMPANY AND SHALL NOT BE REPRODUCED OR DISCLOSED IN WHOLE OR IN PART, NOR USED FOR ANY DESIGN OR MANUFACTURING PURPOSE UNLESS AUTHORIZED IN WRITING BY LOUISVILLE DRYER COMPANY

FOR: 1. Approval X
 2. Resubmitted Approval
 3. Certified

Company: _____
 Authorizing Name: _____
 Initial: _____
 Drawing IS Approved
 Drawing IS Approved as Noted Resubmittal NOT Necessary
 Drawing IS Approved as Noted Resubmittal IS Necessary
 Resubmit with Corrections

LOUISVILLE DRYER COMPANY
 1100 INDUSTRIAL BLVD.
 LOUISVILLE, KY 40219

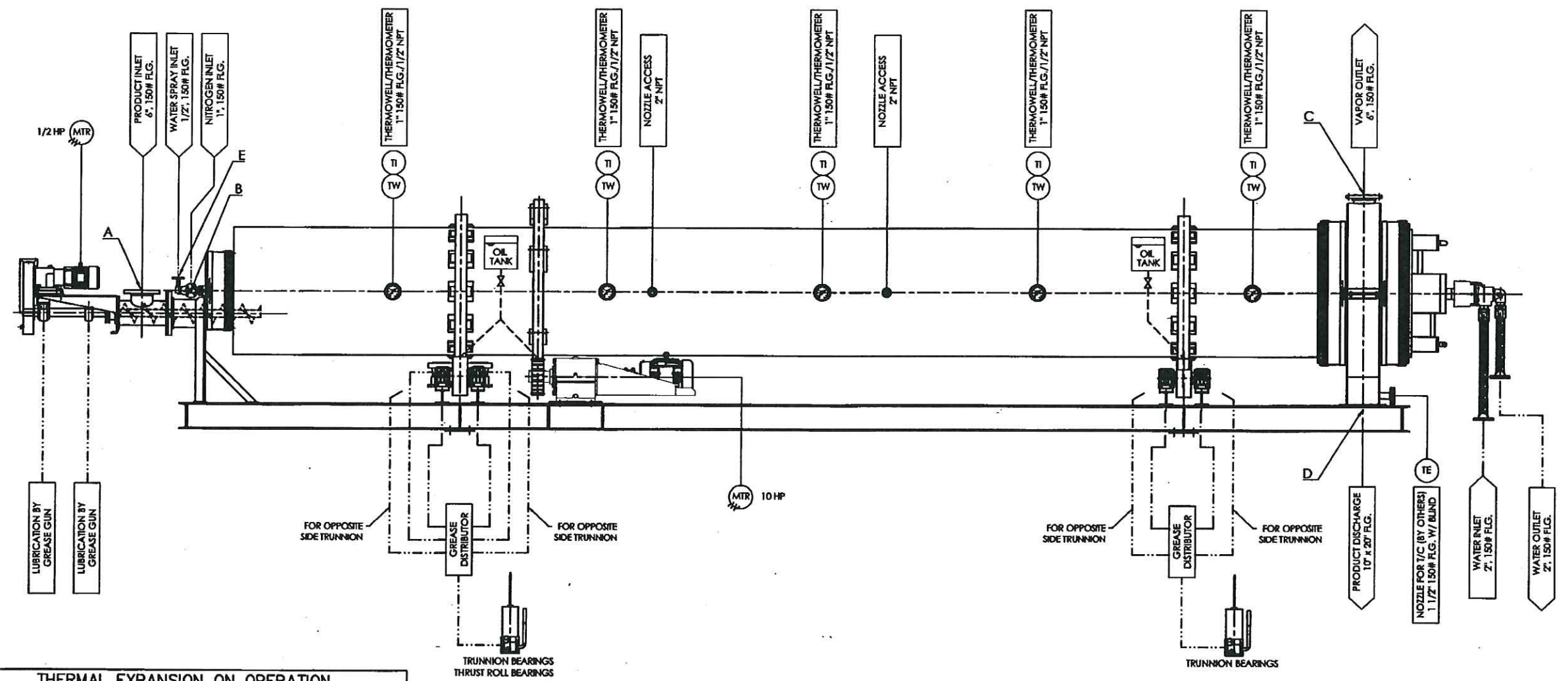
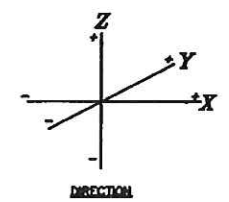
KL-402

TSK - QUENCHER #2
 36" DIA. X 30'-0" ROTARY QUENCHER
 GENERAL ARRANGEMENT

Louisville Dryer Company
 1100 INDUSTRIAL BLVD.
 LOUISVILLE, KY 40219-1804 USA
 TELEPHONE (502) 898-3838
 FAX (502) 898-8028

DWG. BY: BB DATE: 7/07/12
 CHK. BY: _____
 APPROVED BY: _____

SCALE: NONE
 DWG. # 100C-24
 SHT. # 2 OF: 2



THERMAL EXPANSION ON OPERATION

MARK	DESCRIPTION	DISPLACEMENT INCHES (mm) X-DIR	DISPLACEMENT INCHES (mm) Y-DIR	DISPLACEMENT INCHES (mm) Z-DIR
A	PRODUCT INLET	0 [0]	0 [0]	0 [0]
B	GAS INLET	0 [0]	0 [0]	0 [0]
C	GAS OUTLET	0 [0]	0 [0]	+0.08 [+2.13]
D	PRODUCT OUTLET	0 [0]	0 [0]	0 [0]
E	WATER SPRAY INLET	0 [0]	0 [0]	0 [0]

RUN-OUT ON OPERATION

MARK	DESCRIPTION	DISPLACEMENT INCHES (mm) X-DIR	DISPLACEMENT INCHES (mm) Y-DIR	DISPLACEMENT INCHES (mm) Z-DIR
A	PRODUCT INLET	0 [0]	0 [0]	0 [0]
B	GAS INLET	0 [0]	0 [0]	0 [0]
C	GAS OUTLET	0 [0]	0 [0]	0 [0]
D	PRODUCT OUTLET	0 [0]	0 [0]	0 [0]
E	WATER SPRAY INLET	0 [0]	0 [0]	0 [0]

PIPING AND INSTRUMENT DIAGRAM

----- GREASE LINE
 ----- OIL LINE

KL-402

REV. NO.	DATE	BY	APPV.	DESCRIPTION
2	8/13/12	BB		UPDATE PER CUSTOMER COMMENTS
1	8/09/12	BB		UPDATE PER CUSTOMER COMMENTS

TOLERANCES UNLESS OTHERWISE NOTED			
WHOLE NUMBER DIA.	±1/16"	ANGULAR DIA.	±1/16"
FUNCTIONAL DIA.	±1/16"	FUNCTIONAL DIA. (2X)	±.005
		(X3X)	±.002

NOTICE: THE INFORMATION CONTAINED HEREIN IS PROPRIETARY TO LOUISVILLE DRYER COMPANY AND SHALL NOT BE REPRODUCED OR DISCLOSED IN WHOLE OR IN PART, NOR USED FOR ANY OTHER OR UNAUTHORIZED PURPOSE UNLESS AUTHORIZED BY WRITING BY LOUISVILLE DRYER COMPANY

TSX
 36" DIA. x 30'-0" ROTARY QUENCHER
 PIPING AND INSTRUMENT DIAGRAM

Louisville Dryer Company
 1100 BELMONT BLVD.
 LOUISVILLE, KY 40219-1804 USA
 TELEPHONE (502) 260-2876
 FAX (502) 260-2688

DWG. BY: DMS DATE: 7/18/2012
 CHK. BY:
 APPROVED BY:

SCALE: NONE DWG. # 1127-P1
 SHT. # 1 OF 1