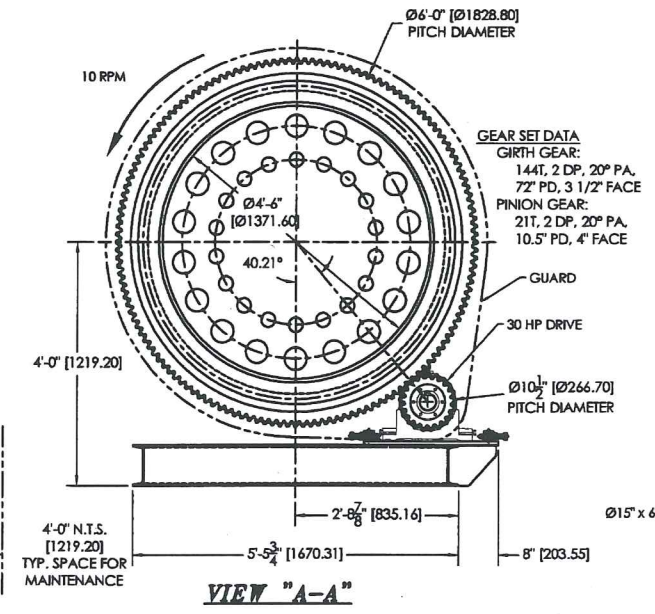


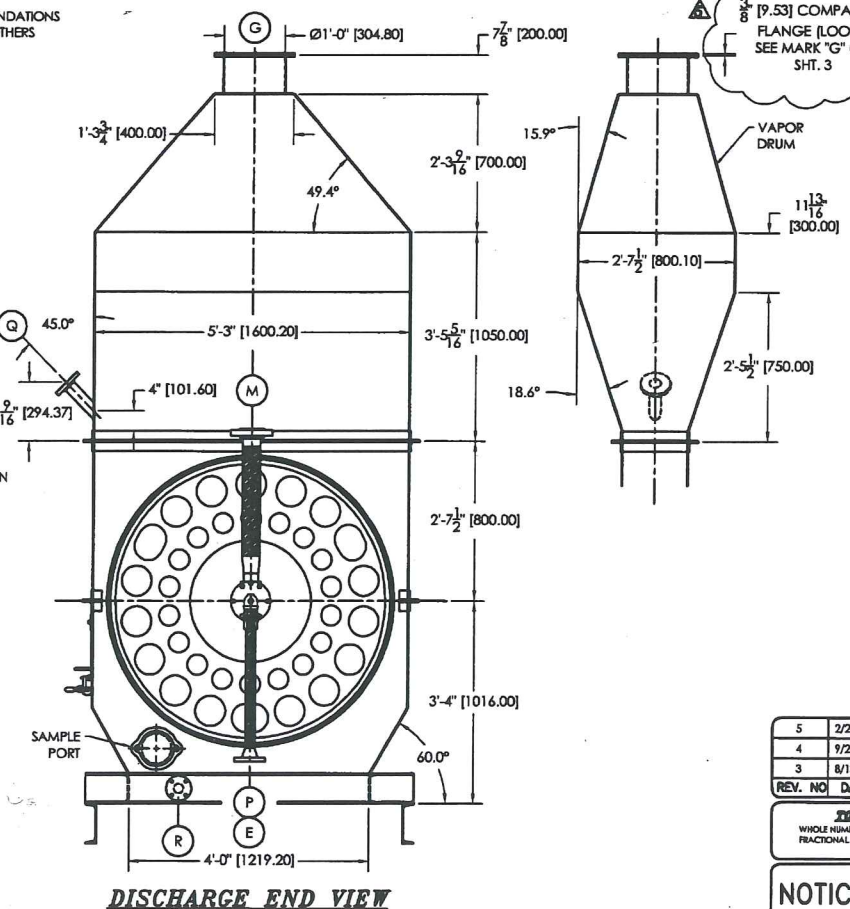
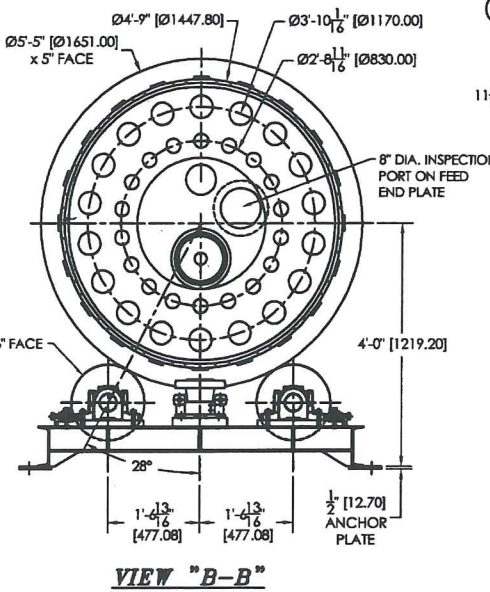
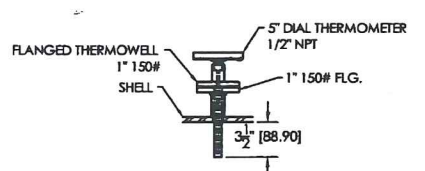
FOR VIEW "C-C" LOOK ON SHEET #3.

FEED SCREW SPECIFICATION
 Ø9" SCREW X STD PITCH @ 25 RPM
 MOTOR: 1 HP TEFC, 460/60/3, NON-HAZARD LOC.
 INVERTOR DUTY D.O.L.
 DRIVE COMPONENTS: TBD

5'-8 1/2" [1733.39] CLEARANCE REQ'D FOR SCREW REMOVAL



30 HP DRIVE SPECIFICATION
 MOTOR: 30 HP TEFC, 460/60/3, NON-HAZARD LOCATION, INVERTOR DUTY
 REDUCER: REXNORD PLANETGEAR - ATLAS, 38,000 LB-IN TORQUE, 73 RPM OUTPUT
 COUPLING: FALK STEELFLEX - SIZE 10501 w/ 1 7/8" & 1 7/8" BORES



MATERIALS OF CONSTRUCTION
 -TIRES SHALL BE AISI 4140 F.S. HT. TREATED TO 240-280 BHN.
 -RING GEAR SHALL BE AISI 4140 F.S. TREATED TO 280-320 BHN.
 -PINION GEAR SHALL BE AISI 4340 F.S. HT. TREATED TO 340-380 BHN.
 -TRUNNION ROLLERS SHALL BE AISI 4340 F.S. HARDENED TO 300-350 BHN.
 -SHELL SHALL BE 1/2" SA-516 GR. 70 STEEL WITH 3/4" HEAVY SECTIONS
 -TUBES - (18) 4" SCH. 80, A-106B PIPE (4 1/2" O.D. x 0.337" THICK)
 -TUBES - (18) 2 1/2" SCH. 160, A-106B PIPE (2 7/8" O.D. x 0.375" THICK)
 -FLUEHEAD SHALL BE 3/4" THICK SA-516 GR.70, A36 RETAINERS.
 -VITON O-RING
 -FEED HOUSING SHALL BE SA-516 GR. 70 STEEL WITH SCREW CONVEYOR FEEDER AND VAPOR OUTLET.
 -DISCHARGE HOUSING SHALL BE SA-516 GR. 70 STEEL
 -STEAM MANIFOLD SHALL BE SA-516 GR. 70 AND SA-36 STEEL
 -VENT HEADER - 3" SCH 40 PIPE WITH (4) VENT VALVES

NOTE:
 SEE NOZZLE SCHEDULE - SHT. 3

MECHANICAL SPECIFICATIONS
 ROTARY STEAM TUBE DRYER
 HEAT TRANSFER AREA - 1,025 SQ. FT.
 DRYER SLOPE - 1:100
 DRYER MANIFOLD & TUBE ASSEMBLY IS DESIGNED, FABRICATED, & STAMPED IN ACCORDANCE WITH THE A.S.M.E. CODE SECTION VIII, 2010 EDITION/2011 ADDENDA FOR 320 PSIG MAWP AT 455 DEG F, 50 MDMT AT 320 PSIG.

FOR: 1. Approval X
 2. Resubmitted Approval
 3. Certified

Company: _____
 Authorizing Name: _____
 Initial _____
 Drawing IS Approved
 Drawing IS Approved as Noted Resubmitted NOT Necessary
 Drawing IS Approved as Noted Resubmitted IS Necessary
 Resubmit with Corrections

LOUISVILLE DRYER COMPANY
 1100 INDUSTRIAL BLVD.
 LOUISVILLE, KY 40219

KL-201

REV. NO.	DATE	BY	APPR.	DESCRIPTION
5	2/21/13	BB		CHANGE TIRE SUPPORT STYLE, ADD NOTE
4	9/21/12	BB		CHANGE STEAM INLET TO 3"
3	8/13/12	BB		UPDATE PER CUSTOMER COMMENTS

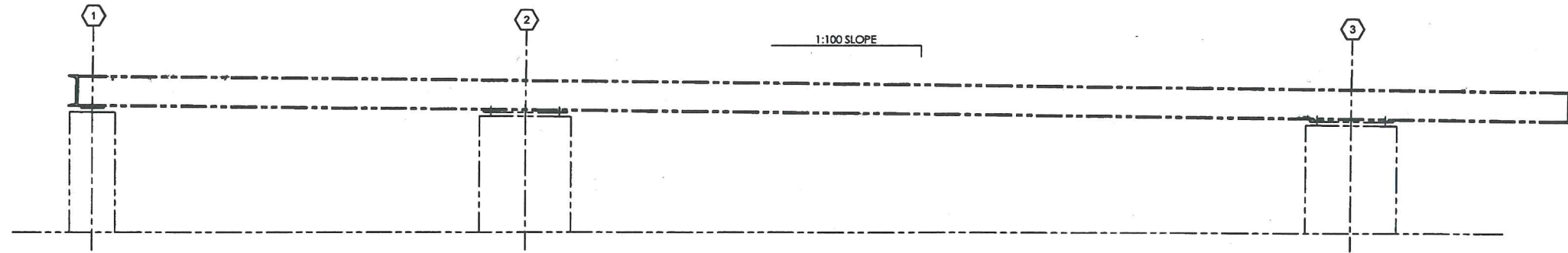
TOLERANCES UNLESS OTHERWISE NOTED			
WHOLE NUMBER DIM.	±1/16"	ANGULAR DIM.	±1/2°
FRACTIONAL DIM.	±1/16"	DIMENSIONAL DIM. [X]	±0.010
		[X]	±0.005

NOTICE:
 THE INFORMATION CONTAINED HEREIN IS PROPRIETARY TO LOUISVILLE DRYER COMPANY AND SHALL NOT BE REPRODUCED OR ENCLOSED IN WHOLE OR IN PART, NOR USED FOR ANY DESIGN OR MANUFACTURING PURPOSE UNLESS AUTHORIZED BY WRITING BY LOUISVILLE DRYER COMPANY

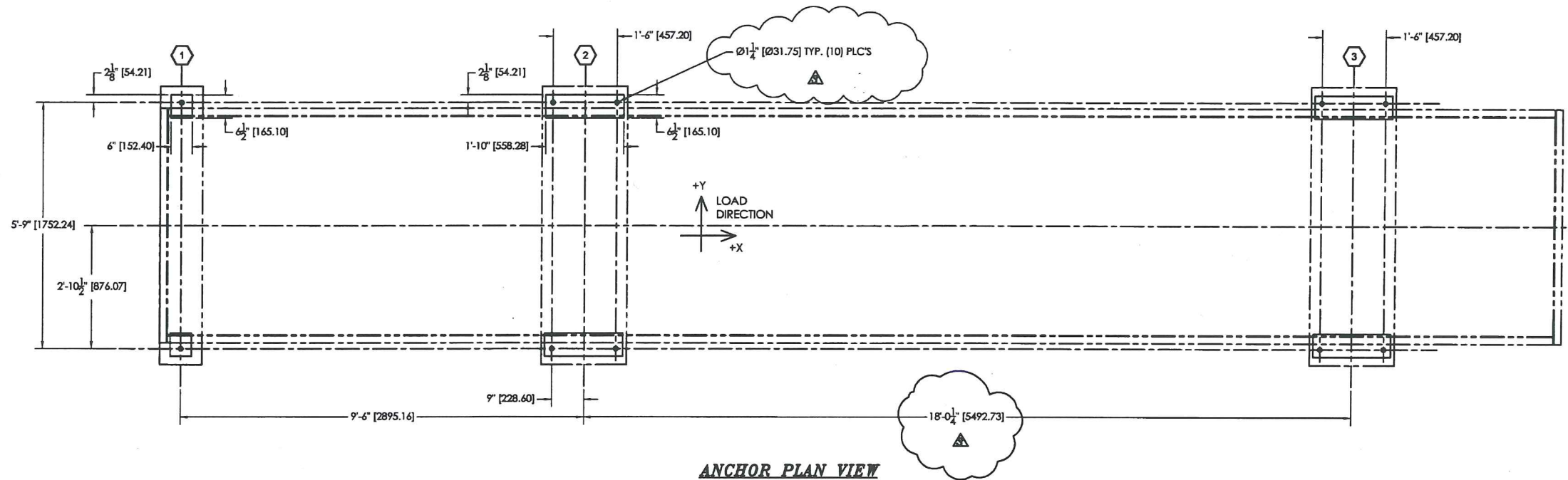
TSK
 Ø54" x 29'-6" ROTARY STEAM TUBE DRYER
 GENERAL ARRANGEMENT

Louisville Dryer Company
 1100 INDUSTRIAL BLVD.
 LOUISVILLE, KY 40219-1804 USA
 TELEPHONE (502) 968-3838
 FAX (502) 968-3888

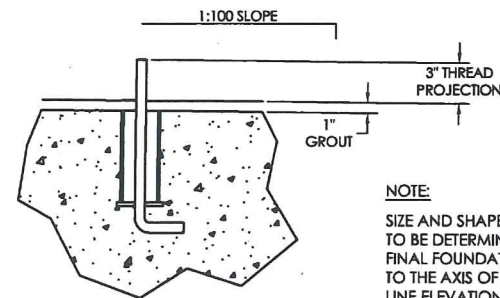
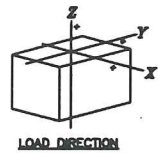
DWG. BY: BB DATE: 7/12/2012
 CHK. BY: _____
 APPROVED BY: _____
 SCALE: NONE
 DWG. # 100B-138
 SHT. # 1 OF: 3



DRYER SUPPORT ELEVATION



ANCHOR PLAN VIEW



TYPICAL ANCHOR BOLT SECTION FOR DRYER SUPPORT PIERS MARK 1 THRU 3.

NOTE:
ANCHOR BOLTS BY OTHERS

NOTE:
SIZE AND SHAPE OF DRYER SUPPORT FOUNDATIONS TO BE DETERMINED BY OTHERS. TOP SURFACE OF FINAL FOUNDATIONS SHOULD BE PITCHED PARALLEL TO THE AXIS OF THE DRYER AS SHOWN. DATUM LINE ELEVATION SHOWN IS FOR REFERENCE ONLY. FINAL FOUNDATION ELEVATIONS, WHEN ESTABLISHED, SHOULD ALLOW 1" FOR SHIMMING AND GROUTING.

LOAD CHART								
TOTAL LOAD (LIVE + DEAD LOADS) ACTING @ STRUCTURE BASE								
MARK	LOAD SHOWN IS THE WEIGHT ON:	EMPTY (DEAD LOAD)		OPERATING (DEAD + LIVE LOAD)		TEMPORARY (DEAD + LIVE + EARTHQUAKE LOAD)		
		VERTICAL KIPS [METRIC TONS] Z-DIR	VERTICAL KIPS [METRIC TONS] Z-DIR	SHEAR KIPS [METRIC TONS] X-DIR	SHEAR KIPS [METRIC TONS] Y-DIR	VERTICAL KIPS [METRIC TONS] Z-DIR	SHEAR KIPS [METRIC TONS] X-DIR	SHEAR KIPS [METRIC TONS] Y-DIR
1	FEED END SUPPORT	-1.50 [0.68]	-1.50 [0.68]	-	-	-1.55 [-0.70]	±0.07 [±0.03]	±0.07 [±0.03]
2	THRUST END TRUNNION SUPPORT	-18.08 [-8.65]	-23.92 [-10.85]	-0.23 [-0.10]	-	-32.84 [-14.80]	-1.42 [-0.64]	±1.10 [±0.50]
3	FREE END TRUNNION SUPPORT	-20.58 [-9.34]	-22.16 [-10.05]	-0.22 [-0.10]	-	-30.83 [-13.98]	-1.32 [-0.60]	±1.02 [±0.48]

NOTE: SEISMIC LOADS ARE ± MAX. RESULTANT LOADS SHOWN WHERE APPLICABLE.

REV. NO.	DATE	BY	APPV.	DESCRIPTION
3	2/14/13	BB		REVISE ANCHOR HOLES AS BUILT
2	10/4/12	BB		ADD TEMPORARY LOAD
1	8/10/12	BB		UPDATE PER CUSTOMER

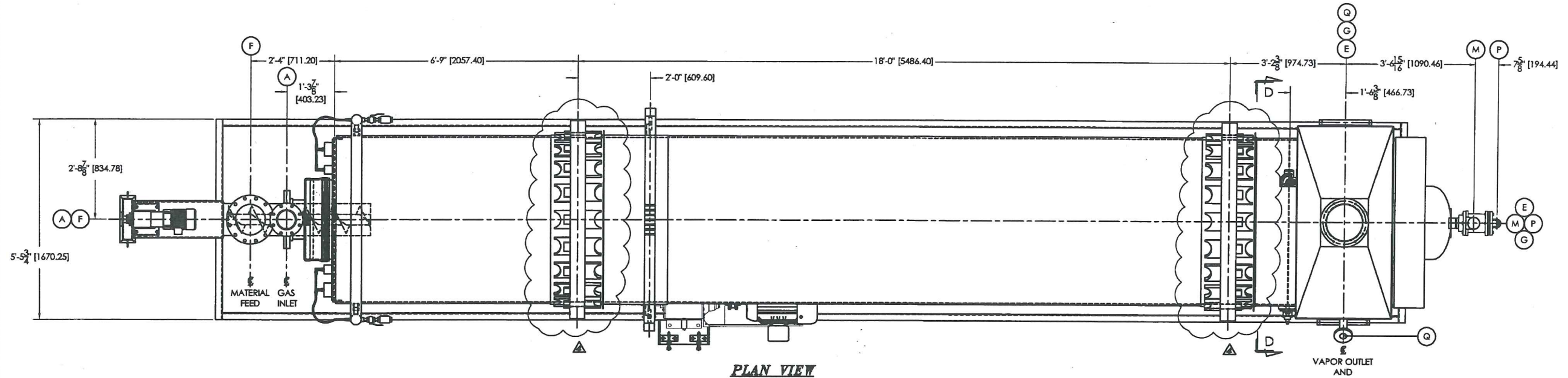
TOLERANCES UNLESS OTHERWISE NOTED			
WHOLE NUMBER DIM.	±1/16"	ANGULAR DIM.	±1/2°
FRACTIONAL DIM.	±1/16"	DIMENSIONAL DIM. (XX)	±0.01
		(XXX)	±0.03

NOTICE: THE INFORMATION CONTAINED HEREIN IS PROPRIETARY TO LOUISVILLE DRYER COMPANY AND SHALL NOT BE REPRODUCED OR DISCLOSED IN WHOLE OR IN PART, NOR USED FOR ANY DESIGN OR MANUFACTURING PURPOSE UNLESS AUTHORIZED IN WRITING BY LOUISVILLE DRYER COMPANY

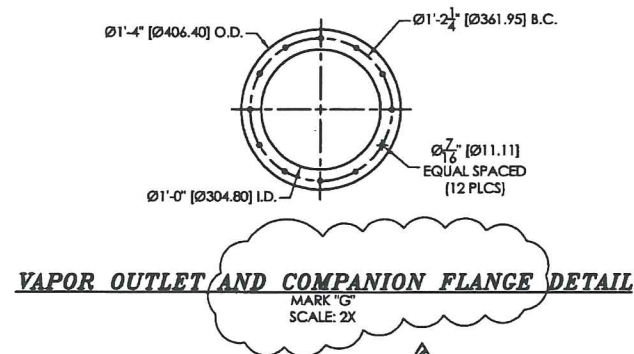
FOR: 1. Approval
 2. Resubmitted Approval
 3. Certified
 Company: _____
 Authorizing Name: _____
 Initial _____
 Drawing IS Approved _____
 Drawing IS Approved as Noted Resubmitted NOT Necessary _____
 Drawing IS Approved as Noted Resubmitted IS Necessary _____
 Resubmit with Corrections _____
 LOUISVILLE DRYER COMPANY
 1100 INDUSTRIAL BLVD.
 LOUISVILLE, KY 40218

KL-201

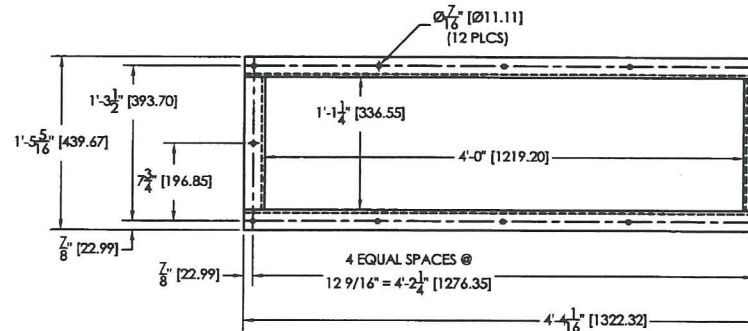
TSK
 5'-0" DIA x 29'-6" ROTARY STEAM TUBE DRYER
 GENERAL ARRANGEMENT
 Louisville Dryer Company
 1100 INDUSTRIAL BLVD.
 LOUISVILLE, KY 40218-1804 USA
 TELEPHONE (502) 586-3636
 FAX (502) 586-3638
 DWG. BY: DMS DATE: 7/12/2012
 CHK. BY: _____
 APPROVED BY: _____
 SCALE: NONE
 DWG. # 100B-138
 SHT. # 2 OF 3



PLAN VIEW

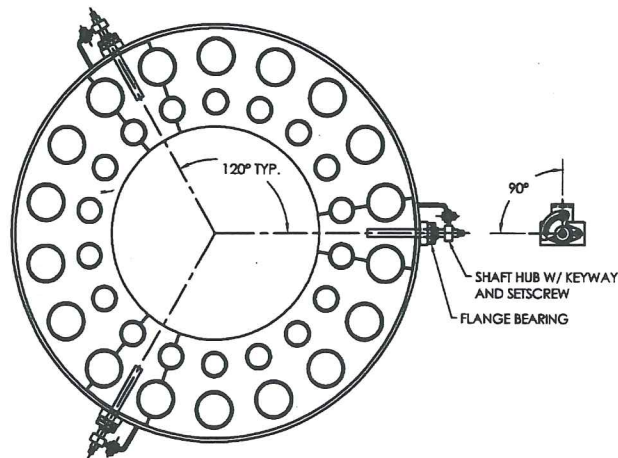


VAPOR OUTLET AND COMPANION FLANGE DETAIL
MARK "G"
SCALE: 2X



DISCHARGE FLANGE DETAIL
MARK "E"
SCALE: 2X

NOZZLE SCHEDULE				
MARK	QTY.	SIZE	TYPE	SERVICE
A	1	6"	ANSI 150# R.F. FLANGE	GAS INLET
E	1	13" X 48"	FAB. F.F. FLANGE SEE DETAIL	PRODUCT DISCHARGE
F	1	10"	ANSI 150# R.F. FLANGE	PRODUCT FEED
G	1	12"	FAB. F.F. FLANGE SEE DETAIL	EXHAUST / COMPANION FLANGE
M	1	3"	ANSI 300# R.F. FLANGE	STEAM INLET
P	1	1 1/2"	ANSI 300# R.F. FLANGE	CONDENSATE OUTLET
Q	1	2"	ANSI 150# R.F. FLANGE	PI CONNECTION
R	1	1 1/2"	ANSI 150# R.F. FLANGE	NOZZLE FOR THERMOCOUPLE



VIEW "D-D"
DAM RING GATE DETAILS
SCALE: 1.5X

FOR: 1. Approval X
 2. Resubmitted Approval _____
 3. Certified _____

Company: _____
 Authorizing Name: _____
 Initial: _____
 Drawing IS Approved _____
 Drawing IS Approved as Noted Resubmitted NOT Necessary _____
 Drawing IS Approved as Noted Resubmitted IS Necessary _____
 Resubmit with Corrections _____

LOUISVILLE DRYER COMPANY
 1100 INDUSTRIAL BLVD.
 LOUISVILLE, KY 40219

KL-201

REV. NO.	DATE	BY	APPV.	DESCRIPTION
4	2/21/13	BB		CHANGE TIRE SUPPORT STYLE. REV. NOTE
3	9/21/12	BB		CHANGE "M" TO "3"
2	8/13/12	BB		UPDATE PER CUSTOMER COMMENTS

TOLERANCES UNLESS OTHERWISE NOTED			
WHOLE NUMBERS DIM.	±1/16"	ANGULAR DIM.	±1/2°
FRACTIONAL DIM.	±1/16"	DECIMAL DIM. (XXX)	±0.010
		DECIMAL DIM. (XXX)	±0.005

NOTICE: THE INFORMATION CONTAINED HEREIN IS PROPRIETARY TO LOUISVILLE DRYER COMPANY AND SHALL NOT BE REPRODUCED OR DISCLOSED IN WHOLE OR IN PART, NOR USED FOR ANY DESIGN OR MANUFACTURING PURPOSE UNLESS AUTHORIZED IN WRITING BY LOUISVILLE DRYER COMPANY

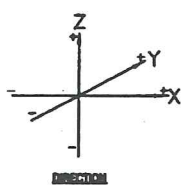
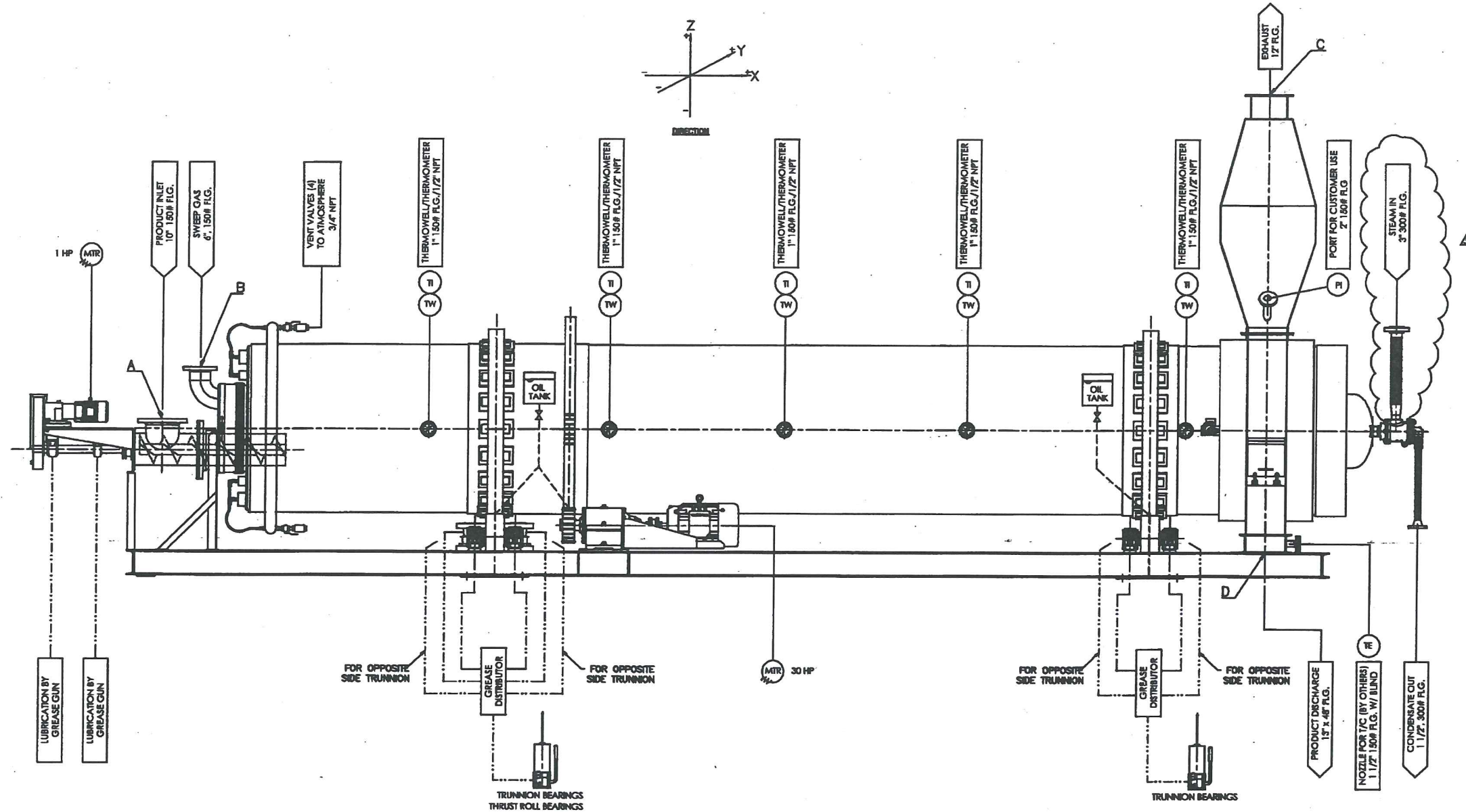
1SK

5'-0" DIA x 29'-6" ROTARY STEAM TUBE DRYER
 GENERAL ARRANGEMENT

Louisville Dryer Company
 1100 INDUSTRIAL BLVD.
 LOUISVILLE, KY 40219-1804 USA
 TELEPHONE (502) 586-3035
 FAX (502) 586-3038

DWG. BY: DMS DATE: 7/12/2012
 CHK. BY: _____
 APPROVED BY: _____

SCALE: NONE
 DWG. # 100B-138
 SHT. # 3 OF 3



THERMAL EXPANSION ON OPERATION				
MARK	DESCRIPTION	DISPLACEMENT INCHES [mm] Z-DIR	DISPLACEMENT INCHES [mm] Y-DIR	DISPLACEMENT INCHES [mm] X-DIR
A	PRODUCT INLET	0 [0]	0 [0]	0 [0]
B	GS INLET	0 [0]	0 [0]	0 [0]
C	GS OUTLET	0 [0]	0 [0]	+6.19 [+1.58]
D	PRODUCT OUTLET	0 [0]	0 [0]	0 [0]

RUN-OUT ON OPERATION				
MARK	DESCRIPTION	DISPLACEMENT INCHES [mm] Z-DIR	DISPLACEMENT INCHES [mm] Y-DIR	DISPLACEMENT INCHES [mm] X-DIR
A	PRODUCT INLET	0 [0]	0 [0]	0 [0]
B	GS INLET	0 [0]	0 [0]	0 [0]
C	GS OUTLET	0 [0]	0 [0]	0 [0]
D	PRODUCT OUTLET	0 [0]	0 [0]	0 [0]

PIPING AND INSTRUMENT DIAGRAM

----- GREASE LINE
 ----- OIL LINE

REV. NO.	DATE	BY	APPV.	DESCRIPTION
3	9/24/12	DB		CHANGE STEAM INLET TO 3"
2	8/13/12	DB		UPDATE PER CUSTOMER COMMENTS
1	8/10/12	DB		UPDATE PER CUSTOMER COMMENTS

NOTICE: THE INFORMATION CONTAINED HEREIN IS PROPRIETARY TO LOUISVILLE DRYER COMPANY AND SHALL NOT BE REPRODUCED OR TRANSMITTED IN ANY FORM OR BY ANY MEANS, ELECTRONIC OR MECHANICAL, INCLUDING PHOTOCOPYING, RECORDING, OR BY ANY INFORMATION STORAGE AND RETRIEVAL SYSTEM.

KL-201

54" DIA x 29'-6" ROTARY STEAM TUBE DRYER
 PIPING AND INSTRUMENT DIAGRAM

Louisville Dryer Company
 1500 GREENBUSH BLVD
 LOUISVILLE, KY 40203-0001
 TEL: (502) 953-1000
 FAX: (502) 953-1001

DESIGNED BY: DMG DATE: 7/18/2012
 CHECKED BY: APPROVED BY: SCALE: NONE
 DWG. # 1125-P1
 SHEET # 1 OF 1