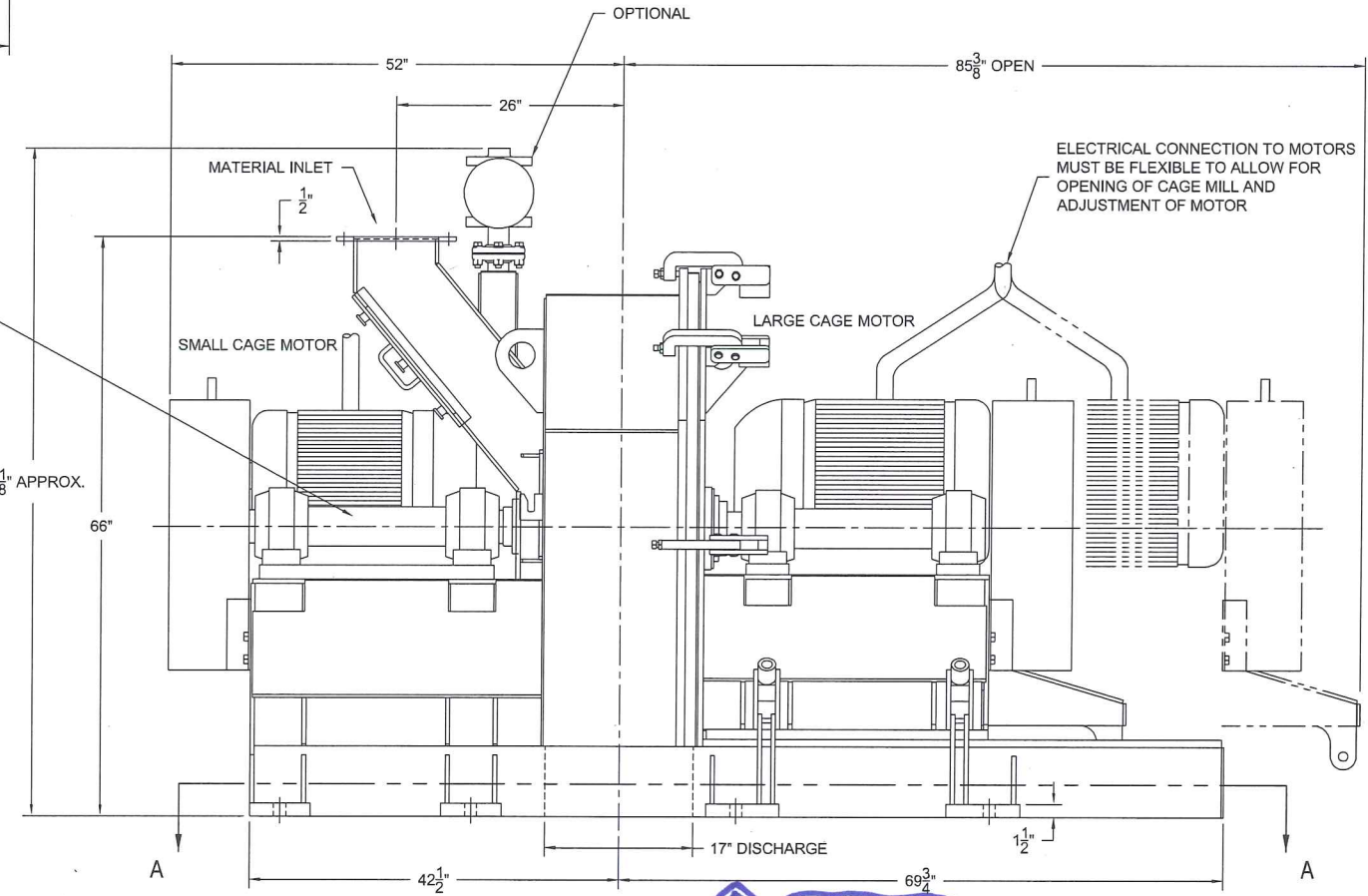
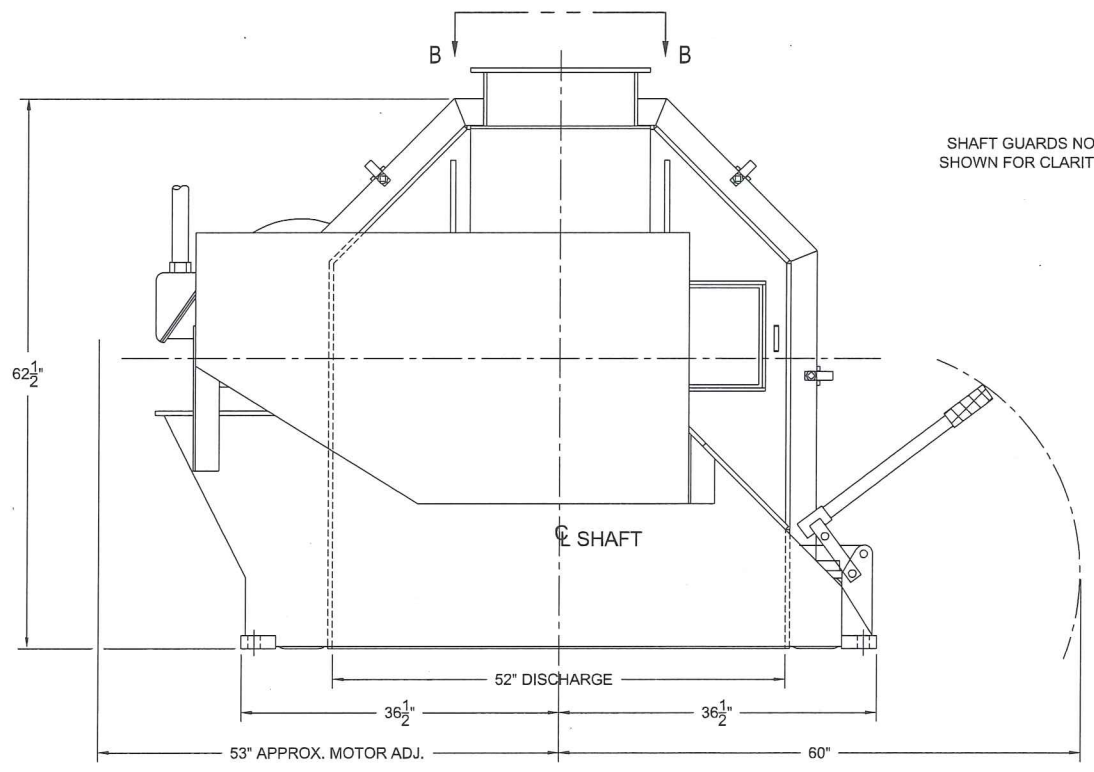
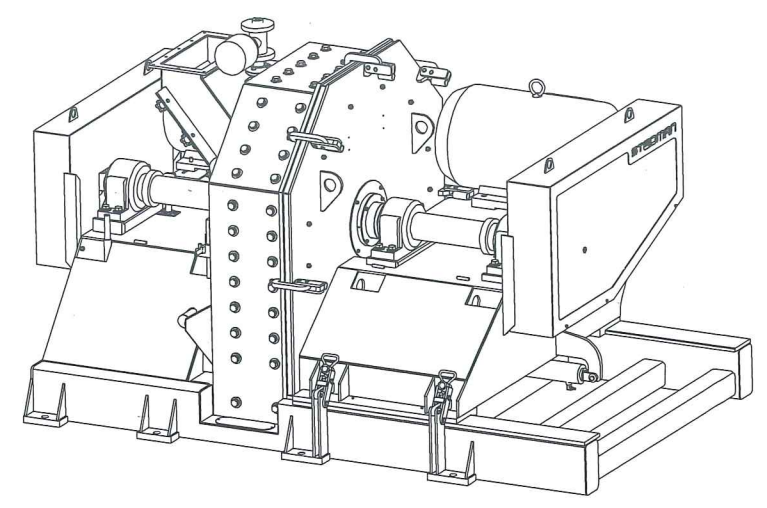
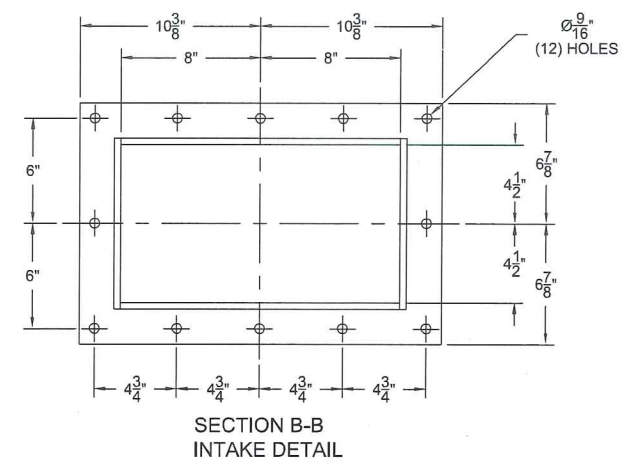
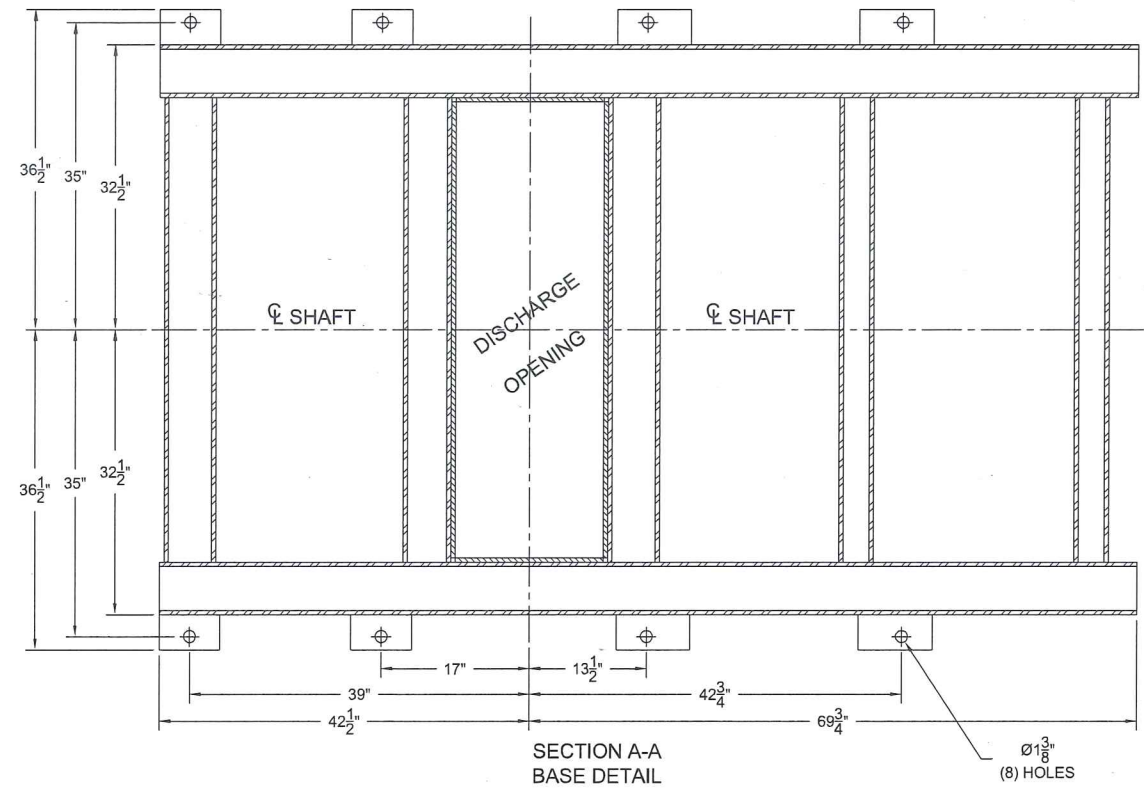


Rev	Date	ECN	Description	By
A	5-18-11	-	GEN REV	JLF



- NOTES:
1. HYDRAULIC SYSTEM IS FURNISHED WITH (2) 25' HOSES.
  2. HYDRAULIC PUMP TO BE LOCATED IN A CONVENIENT LOCATION NEAR CAGE MILL.
  3. ELECTRICAL CONNECTIONS TO MOTORS MUST BE FLEXIBLE TO ALLOW FOR ADJUSTMENT FOR TENSIONING V-BELTS.
  4. CLEAN 80 - 100psi AIR REQUIRED FOR AIR CANNON.
  5. ESTIMATED WEIGHT = 15,000 lbs

*Hydraulic hose length is 25'*

ITEM NO. D50610001	Material:	Plate Thickness:	Raw Material:	Finished Wt: 15000 LBS
DESIGNED BY:	CHECKED BY:	DATE 12/14/12	DWG NO. 50610D	SIZE D
DO NOT SCALE DRAWING		TITLE FOUNDATION PLAN MODEL H-40 CAGE MILL W/AIR CANNON		
UNLESS OTHERWISE SPECIFIED, DIMENSIONS ARE IN INCHES AND TOLERANCES ARE:		SCALE 3/16"=1"	DRAWN BY JLF	SHEET 1 OF 1
ANGLES: ± 1° FRACTIONS: ± 1/16" XX: ± .02 XXX: ± .05		SURFACE ROUGHNESS: 250		

8

7

6

5

4

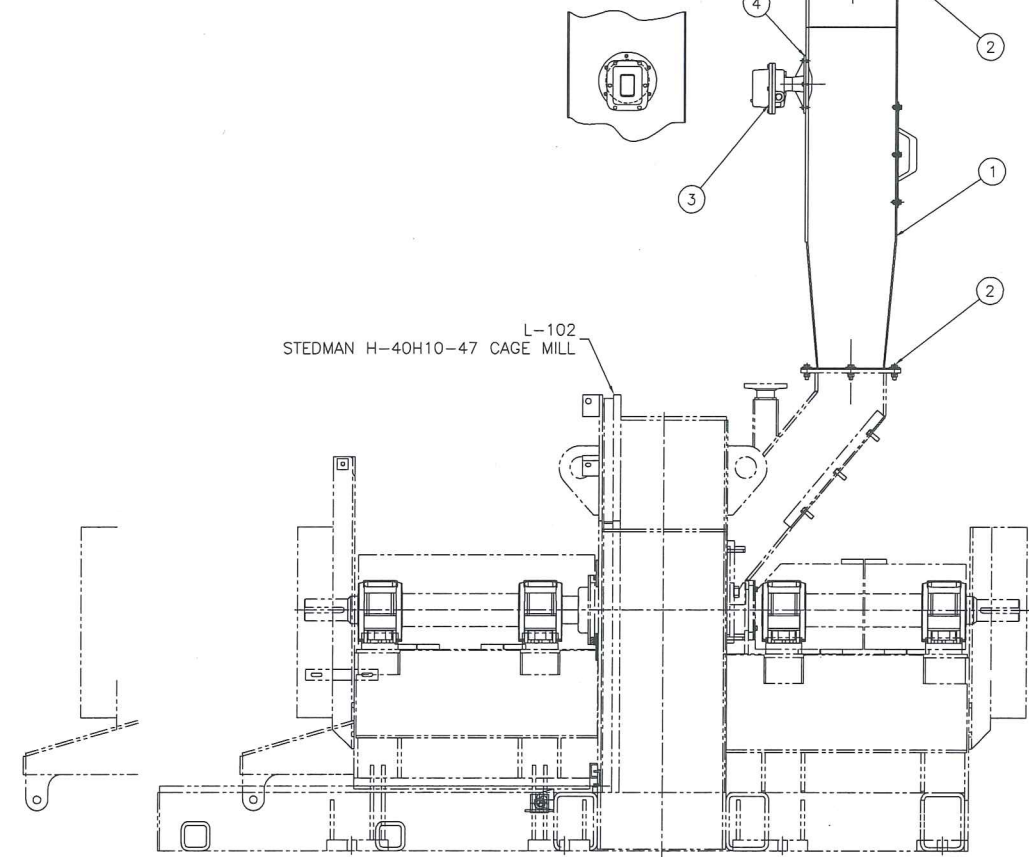
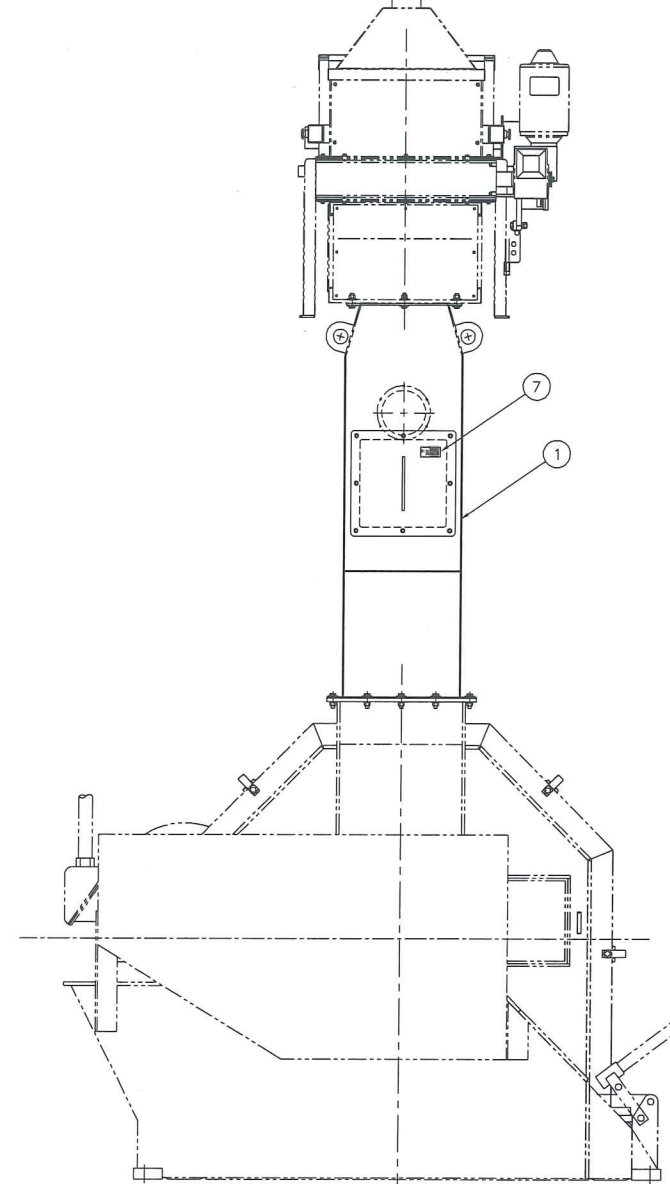
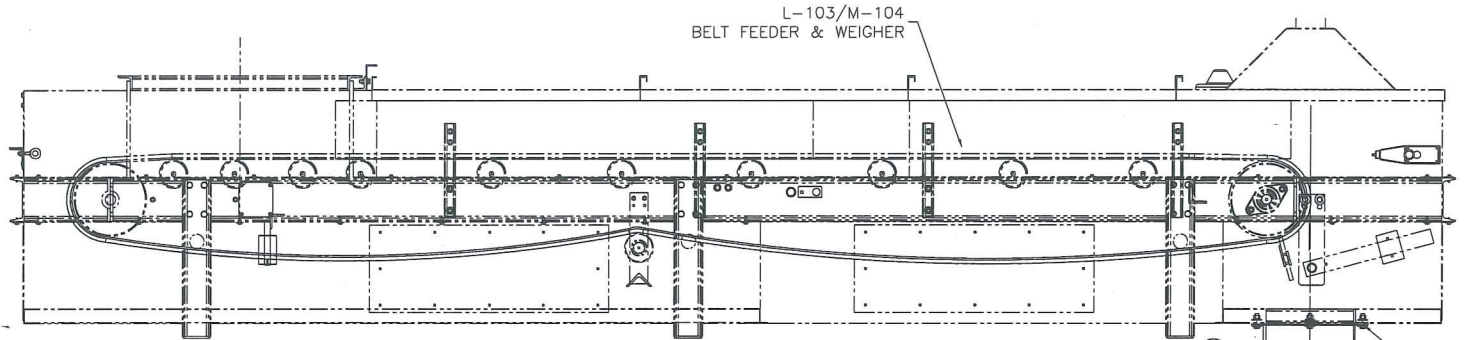
3

2

1

EQUIPMENT LIST				
ITEM	QTY	DESCRIPTION	DRAWING	WEIGHT
1	1	FEED CHUTE WELDMENT	81822-FC1-02	195
2	20	1/2"-13NC GR5 HHCS X 1-3/4" LG W/LW, FW & HN	-	2
3	1	BINDICATOR VRF-1000 LEVEL PROBE	-	5
4	6	1/4"-20NC X 3/4" GR5 HHCS W/ FW, LW & HN	-	-
5	1	COVER PLATE WELDMENT	81822-FC1-03	12
6	8	3/8"-16NC X 1" GR5 HHCS W/ FW, LW & HN	-	-
7	1	DANGER - FLYING DEBRIS HAZARD STICKER	S-92.47	-
TOTAL WEIGHT				214

NOTES:  
 1. LEVEL SWITCH MUST BE FIELD WIRED.  
 2. CHUTE MATERIAL OF CONSTRUCTION IS ASTM A-36 CARBON STEEL.



ITEM 9  
S-92.47

**CRUSHER FEED CHUTE ASSEMBLY**

SCALE: 1"=1'

ZONE	REV	ECN	DESCRIPTION	DATE	BY
-	-	-	-	-	-



DO NOT SCALE DRAWING		CAD FILE NUMBER	JOB NO.
THIS PRINT IS THE PROPERTY OF INNOVATIVE PROCESSING SOLUTIONS AND IS LOANED TO YOU SUBJECT TO RETURN ON DEMAND. UNLESS OTHERWISE AGREED TO IN WRITING BY INNOVATIVE PROCESSING SOLUTIONS, ITS CONTENTS ARE CONFIDENTIAL AND MUST NOT BE COPIED OR SUBMITTED TO ANY THIRD PARTY FOR USE OR EXAMINATION.		81822-FC1-01	81822
UNLESS OTHERWISE SPECIFIED, DIMENSIONS ARE IN INCHES AND TOLERANCES ARE: ANGLES: ± 1° FRACTIONS: ± 1/16" DEC: ± .01 DEC: ± .005		DATE	DWG NO.
SURFACE ROUGHNESS 320		8/30/12	81822-FC1-01
DESIGNED BY	DRAWN BY	CHECKED BY	SHEET
AWP	JLF	-	1 OF 1
			REV
			0

8

7

6

5

4

3

2

1