

CERTIFIED PRINT FOR

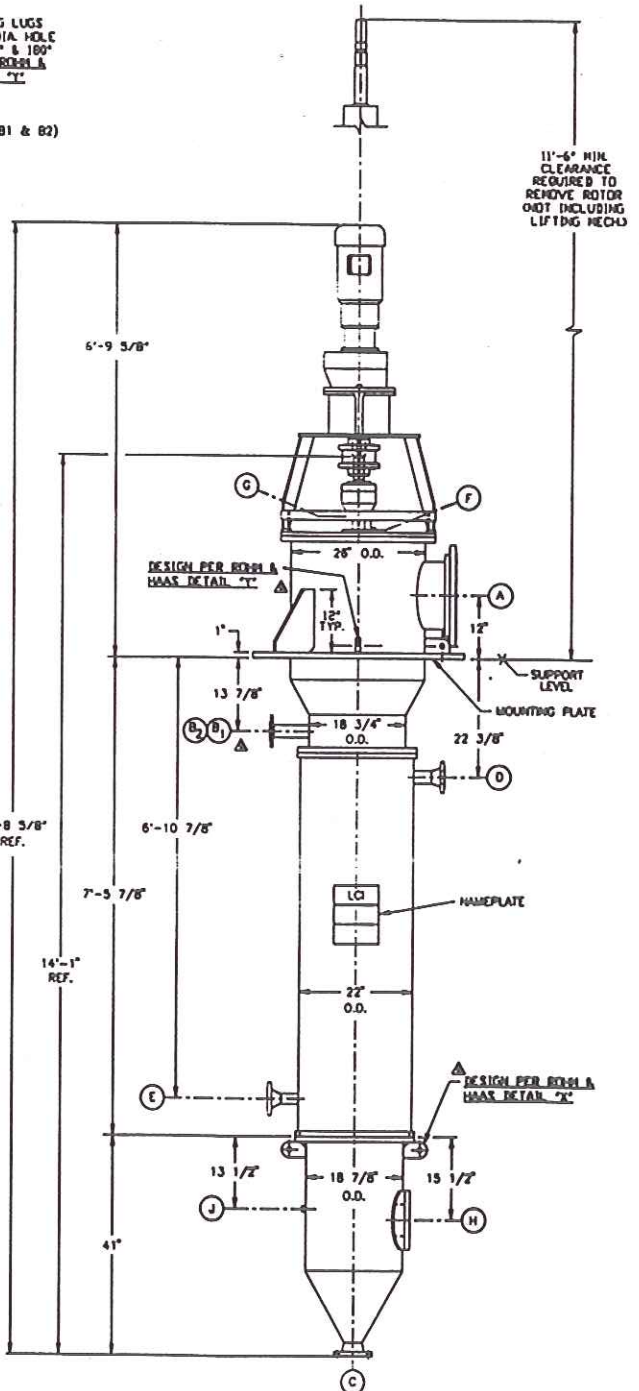
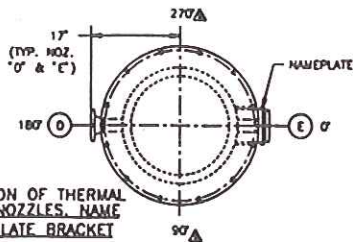
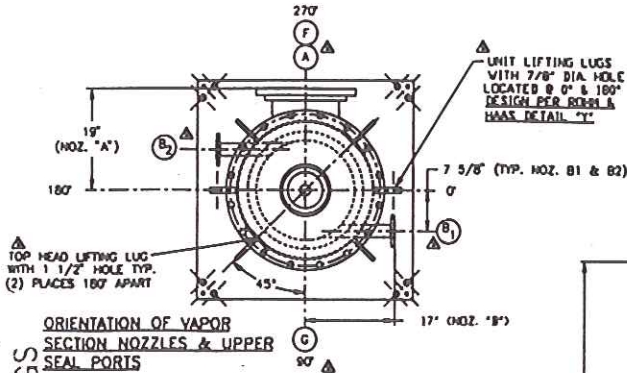
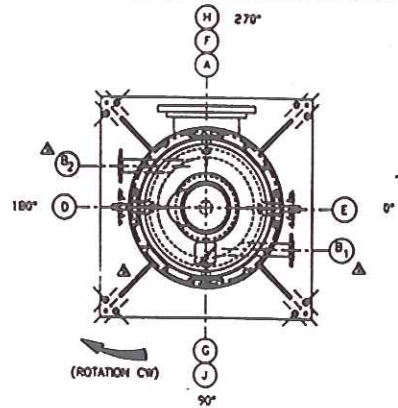
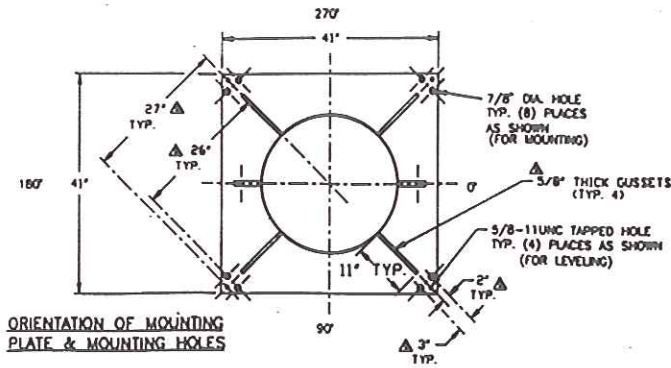
ROHM & HAAS

APPROVED FOR 17217

LOW CORPORATION

DATE 5/23/95

DO NOT SCALE DRAWINGS



NOTES:

- HEATING SURFACE:-----28 SQ. FT.
- MAXIMUM ALLOWABLE WORKING PRESSURE:
PROCESS AREA: FULL VACUUM TO 15 PSIG @ 400F
THERMAL SECTION: FULL VAC TO 150 PSIG @400F (STEAM SERVICE)
- JACKET & INTERNALS ASME U-STAMPED PER SECTION VIII, DIV. 1
HYDROTEST PRESSURE: 23 PSIG PROCESS AREA
225 PSIG JACKET AREA
- WEIGHTS:
UNIT EMPTY-----3,875 LBS.
UNIT FLOODED-----5,315 LBS.
ROTOR-----700 LBS.
- WHEN LIFTING ROTOR, USE FULL SWIVEL HOIST HOOK & CLEVIS LIFTING EYE WITH 7/8-INCH STUD.
- ROTATION OF ROTOR CLOCKWISE FROM 0
- FOR CORRECT NOZZLE ORIENTATION SEE SECTIONAL VIEWS.
- ALL CARBON STEEL EXTERIOR SURFACES WILL BE COATED WITH PPG INDUSTRIES SILICONE ACRYLIC PRIMER UC46654 PER ROHM & HAAS STANDARD 57-421

NOZ.	QTY.	SERVICE	DESCRIPTION
J	1	LUBRICANT CONN.	3/8"-3000# FULL COUP.
H	1	HANDWAY	6"-150# ANSI W/BLIND FLG.
G	1	SEAL FLUID OUTLET	1/4" F.H.P.T. (PLUGGED)
F	1	SEAL FLUID INLET	1/4" F.H.P.T. (PLUGGED)
E	1	CONDENSATE	1 1/2"-150# ANSI R.F., W.J., FLG.
D	1	STEAM INLET	2"-150# ANSI R.F., W.J., FLG.
C	1	PRODUCT OUTLET	3"-150# ANSI R.F., W.J., FLG.
B	1	PRODUCT INLET	2"-150# ANSI R.F., S.O., FLG.
A	1	VAPOR OUTLET	12"-150# ANSI R.F., S.O., FLG.

NOZZLE SCHEDULE

CUSTOMER: ROHM & HAAS CO., BAYPORT, TEXAS USA
PROJECT: BBU PROJECT, A89 94783
ITEM NUMBER: 442-01-0067

MATERIALS OF CONSTRUCTION

- UPPER & LOWER PROCESS SECTIONS: 316L STAINLESS STEEL
- THERMAL SHELL SECTION: CARBON STEEL W/ 316L S.S. CLADDING
- JACKET: CARBON STEEL

REVISIONS

NO.	DATE	DESCRIPTION

DATE: 5/23/95

SCALE: AS SHOWN

PROJECT: BBU PROJECT, A89 94783

ITEM NUMBER: 442-01-0067