

NAT'L. BD. NO. 358

MFRD. BY CURTIS KELLY INC.

SERIAL NO. M762 BUILT 1998

VESSEL/SHELL JACKET TUBE

MAX. W.P. AT 30 PSIG

MAX. TEMP. F. 400

SH. THK.-MATL. 1815 - SB-515-C276

HD. THK.-RAD.

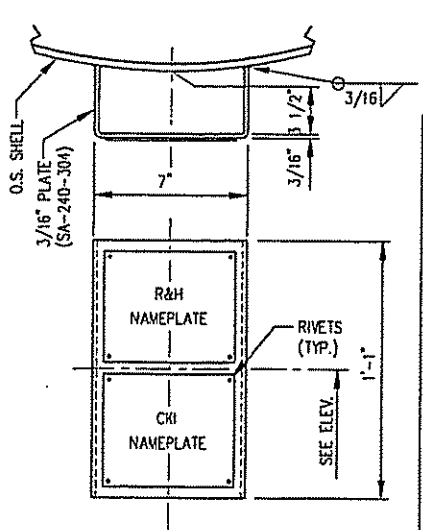
HEAD-BONN. MATL.

TUBESHEET MATL.

TUBE-TRAY-SKIRT MATL.

ITEM NO. 445-01-40559 PLANT ITEM NO.

ROHM & HAAS



NAT'L. BD. 358

CERTIFIED BY CURTIS KELLY INC. HOUSTON, TEXAS

MAX. ALLOW. WORK. PRESS. 30 P.S.I. AT 400 °F

MIN. DESIGN METAL TEMP. 15 °F AT 30 P.S.I.

SERIAL NO. M762 DATE 1998 WT. 810 #

MAX. TEST PRESS. P.S.I. 47 O.D. 12.75"

SHELL THK. 1815" HD. THK. --- ITEM No. #

P.O. NO. CA-31295

445-01-40559

EST. WEIGHTS & CAPACITY

FABRICATED WEIGHT	810	LBS.
HYDRO WEIGHT	1060	LBS.
CAPACITY	29	GALS.
ERECTED WEIGHT	810	LBS.

- GENERAL NOTES:**
- 1.) FLANGE BOLT HOLES TO STRADDLE VESSEL CENTERLINES UNLESS NOTED OTHERWISE.
 - 2.) DRILL & TAP 1/4" TELLTALE HOLE IN REINFORCING PAD.
 - 3.) OUTSIDE PROJECTION SHOWN IN THE NOZZLE SCHEDULE IS FROM VESSEL O.D. UNLESS NOTED OTHERWISE.
 - 4.) INSIDE PROJECTION SHOWN IN THE NOZZLE SCHEDULE IS MINIMUM ONLY.
 - 5.) ALL NOZZLES SHALL BE ADEQUATELY PROTECTED AND COVERED FOR SHIPMENT. INSTALL WOOD OR METAL PROTECTORS ON FLANGES.
 - 6.) VESSEL TO BE OILED AND CLEANED BEFORE SHIPMENT.
 - 7.) ALL FLANGE FACE FINISHES ARE TO BE 125-250 R_a.
 - 8.) L.P. REQUIRED FOR ALL BACK GOUGES & COMPLETED WELDS.
 - 9.) SPACER PLATES, BOLTS & GASKETS ARE FURNISHED BY ROHM & HAAS.
 - 10.) CH1 IS NOT TO FURNISH SPARE GASKETS.

SPECIFICATIONS

CONSTRUCTION CODE ASME CODE SECTION VIII, DIV. 1 1995 EDITION, 1996 ADDENDA

YEAR BUILT 1998 M.A.W.P. 30 PSIG @ 400°F

SERIAL NO. 7000 NATIONAL BD. NO. 358

DESIGN PRESSURE INTERNAL 30 PSIG @ TEMP. 15/400 °F MIN/MAX

DESIGN PRESSURE EXTERNAL N/A PSIG @ TEMP. N/A °F MIN/MAX

HYDRO PRESSURE INTERNAL 47 PSIG J.E. SHELL 100%

CORROSION ALLOWANCE NONE J.E. HEADS NONE

RADIOGRAPHY RT-1 STRESS RELIEVE NONE

SHELL MATL. SPEC. SB-575-C276 HEAD MATL. SPEC. N/A

FLANGE MATL. SPEC. SB-564-C276 / SA-105 CPLG. MATL. SPEC. NONE

PIPE MATL. SPEC. SB-619-C276 BW FIT. SPEC. NONE

REPAD MATL. SPEC. N/A STRUC. MATL. SPEC. NONE

FLG. STUD SPEC. NONE

FLG. NUT SPEC. NONE

GASKET DESC. NONE

INSULATION DESC. 3" THK. (BY OTHERS)

INSPECTION BY OLD REPUBLIC INSURANCE CO. & CUSTOMER

SANDBLAST EXTERNAL SURFACES PER SSPC-SP10 (NEAR WHITE BLAST)

PAINT EXTERNAL SURFACES - PRIME WITH PORTER 1332 TARSET SUPER COAL TAR EPOXY TO 8.0 MILS D.F.T. & FINISH WITH 8.0 MILS D.F.T. FOR A TOTAL OF 16.0 MILS D.F.T.

HOUSTON STAINLESS & SUPPLY, INC.
14875 WATERLOO HOUSTON, TEXAS

DESCRIPTION: 12 3/4" O.D. X 4'-6 13/16" FACE TO FACE SOLVENT PURIFICATION COLUMN LOWER REPLACEMENT SECTION ITEM: 445-01-40559 ENTERED FEB 20 1998

CUSTOMER: ROHM & HAAS COMPANY BAYPORT, TEXAS FINAL CERTIFIED

SCALE: N.T.S.	DATE: 1-19-98	P.O. No.: CA31295
DRAWN: RGRAY	FILE No.: 7000	
CHECK: NG	1-20-98	DWG. NO. 7000
APVD: NG	1-21-98	SHEET NO. 1 OF 1

MARK NO.	SERVICE	SIZE	RATING	TYPE	WALL	LG.	MAT'L.	THK. X WD.	MAT'L.	O.S.	I.S.	WELD DETAIL	WELD SIZE	NOTES
6	D.P. CONNECTION	2"	150#	STUD. OUT.	SEE DTL.	THIS SH.								
5	D.P. CONNECTION	2"	150#	STUD. OUT.	SEE DTL.	THIS SH.								
4	REBOILER RETURN	4"	150#	RFSO	S/40s	4 3/4"	SB-619-C276	---	---	4"	FLUSH	III	VI	1/4 3/16
3	LIQUID RETURN	2"	150#	RFSO	S/40s	4 1/2"	SB-619-C276	---	---	4"	FLUSH	III	VI	3/16 3/16
2	T.I.	2"	150#	STUD. OUT.	SEE DTL.	THIS SH.								
1	LIQUID INLET	3"	150#	RFSO	S/40s	SEE DTL.	THIS SH.							

CONFIDENTIAL

THIS DRAWING IS THE PROPERTY OF AND CONTAINS CONFIDENTIAL AND PROPRIETARY INFORMATION BELONGING TO CURTIS KELLY, INC. IT MUST BE RETURNED IMMEDIATELY UPON REQUEST AND MUST NOT BE COPIED IN WHOLE OR IN PART NOR THE INFORMATION SHOWN HEREON DISCLOSED TO THIRD PARTIES OR OTHERWISE USED EXCEPT AS SPECIFICALLY PERMITTED BY CURTIS KELLY, INC.

REFERENCE DRAWINGS		REVISIONS			
NUMBER	DESCRIPTION	NO.	DESCRIPTION	BY	CHK. DATE
0	ISSUED FOR APPROVAL	RG	MG		1-21-98
1	AS BUILT	RG	GHL		2-20-98

VB-0040-0217