

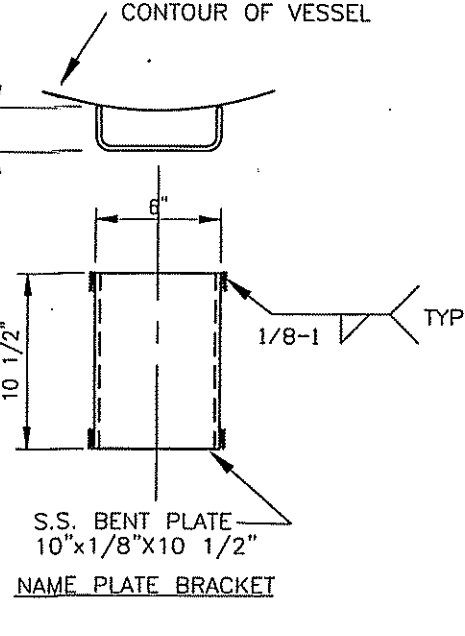
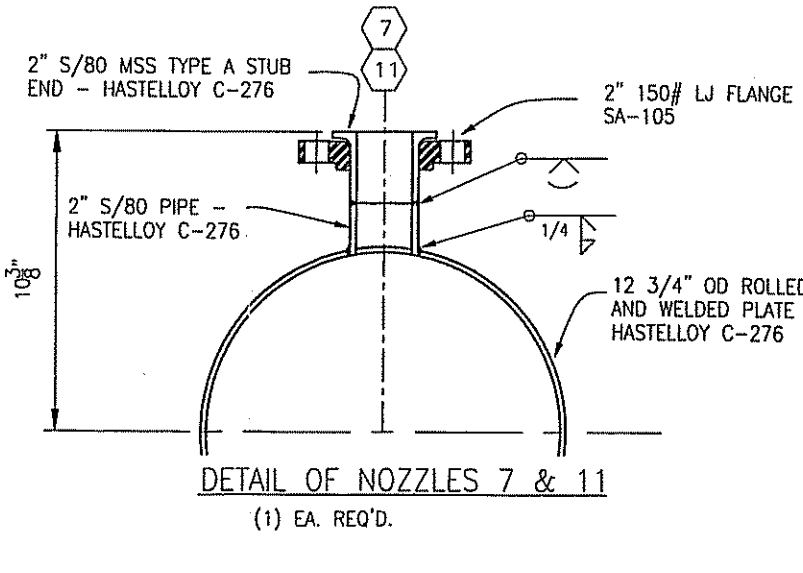
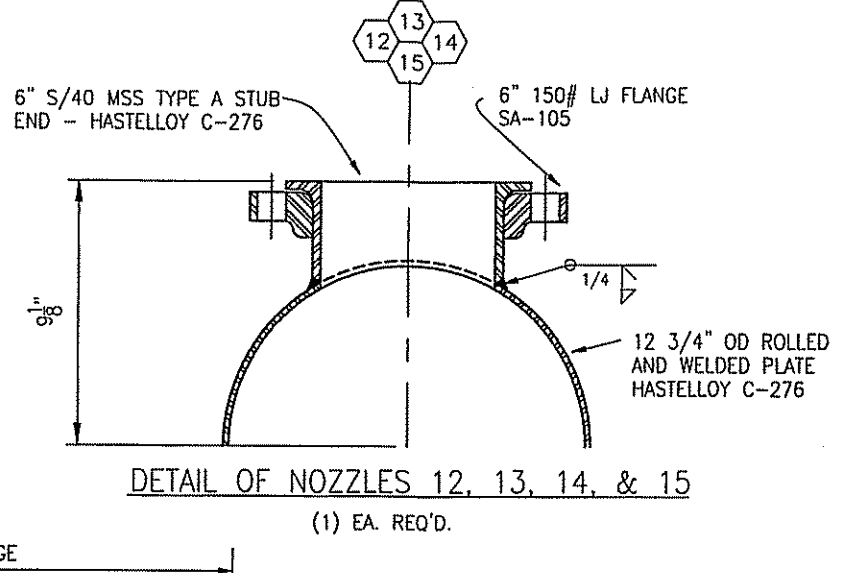
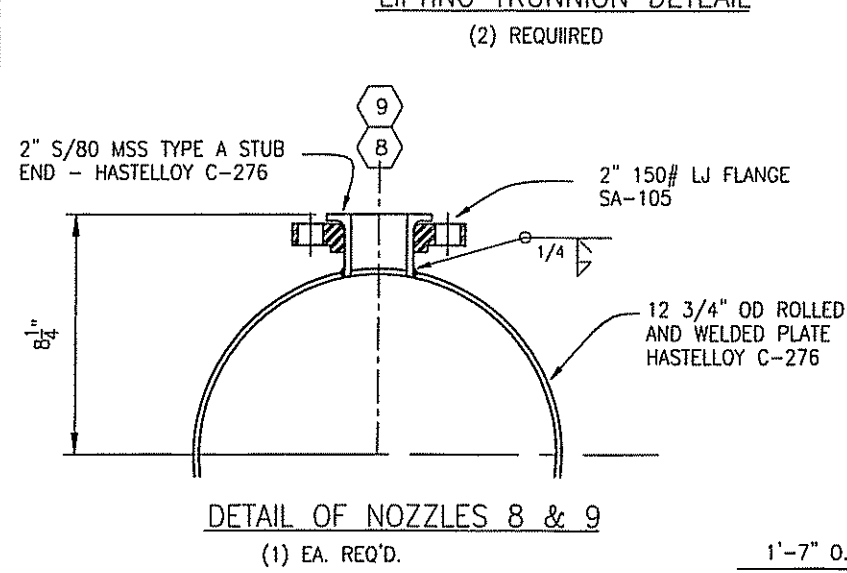
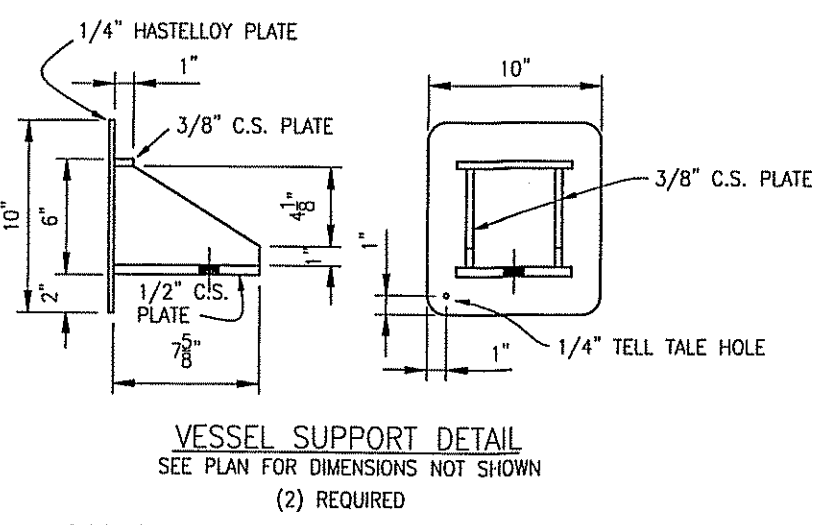
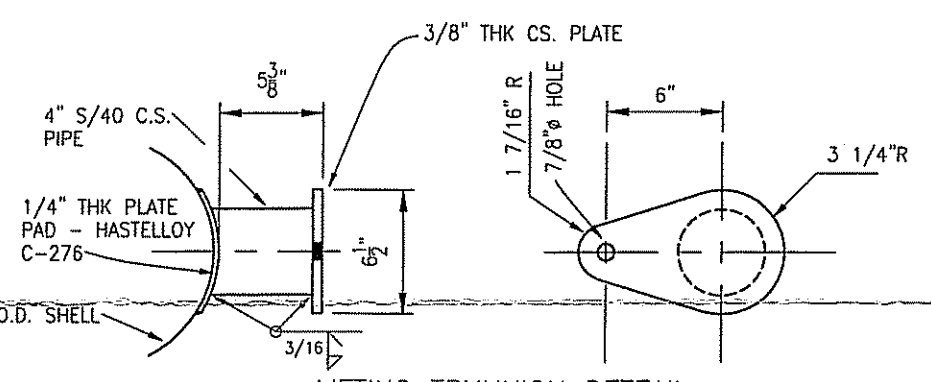
ELEVATION
FOR TRUE ORIENTATION, SEE PLAN

DESIGN DATA	
PRESSURE	: 30 PSIG
TEMPERATURE (F)	: 15° TO 400°
MAWP (PSIG)	: 30 PSIG
LIMITED BY	: DESIGN
HYDRO-TEST PRESSURE	: 47 PSIG
CORROSION ALLOWANCE	
SHELL	: 1/16"
HEAD	: 1/16"
RADIOGRAPHIC EXAMINATION	: NONE

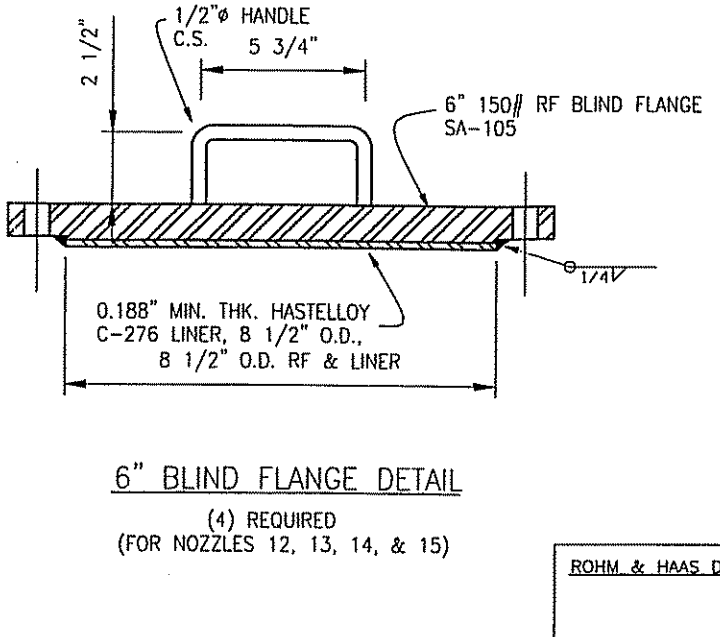
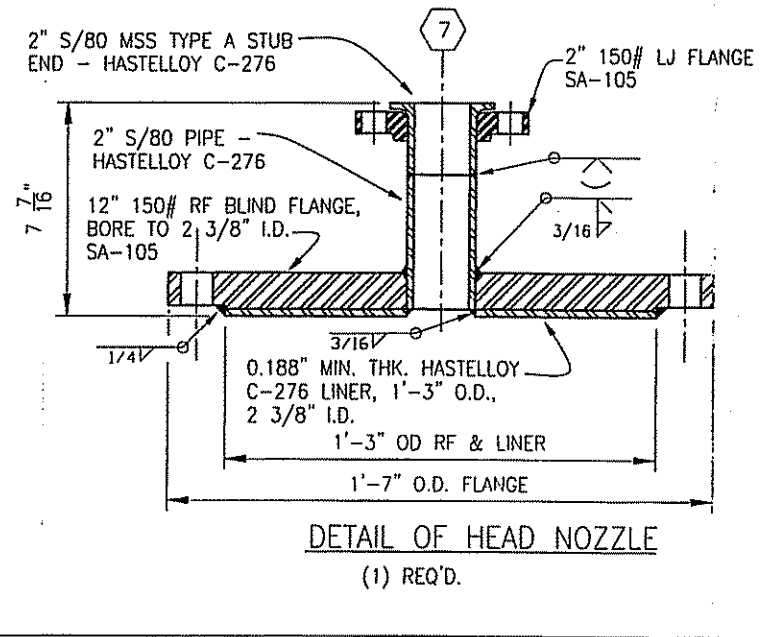
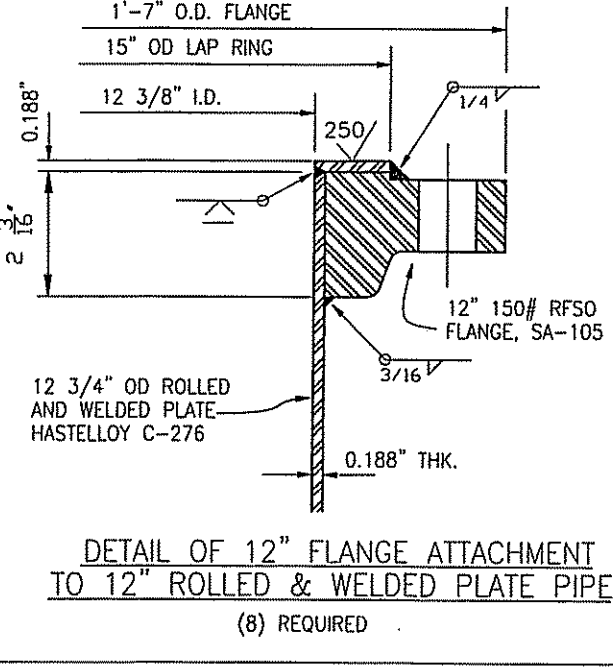
MATERIALS OF CONSTRUCTION	
SHELL	: HASTELLOY C-276
HEAD	: HASTELLOY C-276
FLANGE	: SA-105
NOZZLE NECK	: HASTELLOY C-276
BOLTING (STUDS)	: A-193-B7
NUTS	: A-194-2H
GASKET	
SUPPORT	: SA-36

- GENERAL NOTES
- VESSEL IS TO BE CONSTRUCTED IN ACCORDANCE WITH 1998 EDITION OF ASME CODE SECT. VIII, DIV. 1. CODE STAMP IS REQUIRED.
 - FLANGE BOLT HOLE TO STRADDLE PRINCIPLE CENTERLINES OF VESSEL UNLESS INDICATED OTHERWISE.
 - DRILL AND TAP 1/4" NPT HOLE IN REINFORCING PADS.
 - INSIDE EDGES OF NOZZLE NECKS ARE TO BE GROUNDED TO 1/8" RADIUS.
 - THIS VESSEL IS DESIGNED FOR NON-LETHAL SERVICE.
 - CENTERPUNCH TANGENT LINE ON O.D. OF HEADS PER RAH STD. 55-521.
 - PAINT NORTH ARROW, ITEM NO. & P.O. NO. ON TOP OF VESSEL.
 - ALL FLANGE FACINGS TO HAVE SPIRAL PHONOGRAPHIC FINISH. (250-500 RA)
 - VESSELS SHALL BE THOROUGHLY CLEANED OF ALL SCALE, SPATTER, FLUX, GREASE, DIRT, & LOOSE FOREIGN MATTER.
 - ALL C.S. ATTACHMENTS TO BE PAINTED PER RAH SPEC. 57-423.
 - COVER ALL OPENINGS IN VESSEL PRIOR TO SHIPMENT.
 - WELD NUMBERS ARE INDICATED BY "W1", "W2", ETC.

PLAN
SEE INDIVIDUAL NOZZLE
DETAILS FOR NOZZLE PROJECTIONS



MARK	REQD.	SIZE	RTG	TYPE	SERVICE
15	1	6"	150#	LJ	PACKING WITH BLIND
14	1	6"	150#	LJ	PACKING WITH BLIND
13	1	6"	150#	LJ	PACKING WITH BLIND
12	1	6"	150#	LJ	PACKING WITH BLIND
11	1	2"	150#	LJ	INLET
10	1	2"	150#	LJ	LIQUID FEED
9	1	2"	150#	LJ	LIQUID FEED
8	1	2"	150#	LJ	CONDENSER RETURN
7	1	2"	150#	LJ	D.P. CONNECTION



SOLVENT PURIFICATION COLUMN			
ITEM # 445-01-40559			
JAKE HARRIS & SONS INC.			
CJ530			
CAD NUMBER	ENTERED BY	DATE	SCALE
0B00018B	BLA	08/11/99	1"=1'-0"
ETC	GROUP NO	ART NUMBER	PLANT LOCATION
445 0040-559	99-029	015	03
DRAWING NUMBER		REV	A
VB-0040-0524			

WELD PROCEDURES: M2, M4, T2, T12	
R&H NAME PLATE DETAIL	
NATIONAL BOARD NUMBER	261, 262, 263, 264
AFFID BY	JAKE HARRIS & SONS, INC.
SERIAL NO.	CJ-530 A, B, C, D
YEAR	1999
MAX. W.P. PSIG	30
MAX. TEMP. °F	400
MIN. TEMP. °F	15
SU. THK.-MATEL.	1/16" HASTELLOY C276
NO. THK.-RAD.	
TUBE SHEET MATEL.	
NO.-BORING MATEL.	
TUBE-TRAY-SHEET MATEL.	
ITEM NO.	445-01-40559
NAT'L BOARD NAME PLATE DETAIL	
NAT'L. BO.	261, 262, 263, 264
AFFID BY	JAKE HARRIS & SONS, INC.
SERIAL NO.	CJ-530 A, B, C, D
YEAR	1999
MAX. W.P. PSIG	30
MAX. TEMP. °F	400
MIN. TEMP. °F	15
SU. THK.-MATEL.	1/16" HASTELLOY C276
NO. THK.-RAD.	
TUBE SHEET MATEL.	
NO.-BORING MATEL.	
TUBE-TRAY-SHEET MATEL.	
ITEM NO.	445-01-40559

REV	DESCRIPTION	DATE
A	ISSUED AS BUILT	5-29-99

JAKE HARRIS + SONS INC.

CUSTOMER: ROHM AND HAAS, DEER PARK, TEXAS

SOLVENT PURIFICATION COLUMN
ITEM # 445-01-40559

P.O. NO.	S.O. NO.	SCALE	SHEET
CA34263	CJ530	12	1 OF 1
DRN	CHK	DWG. NO.	
LH	JH	CJ530	A