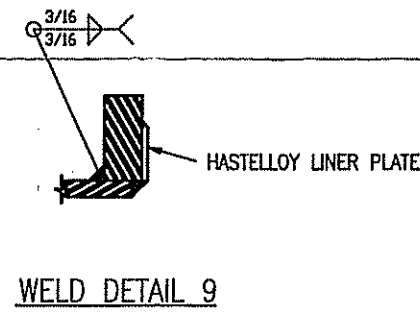
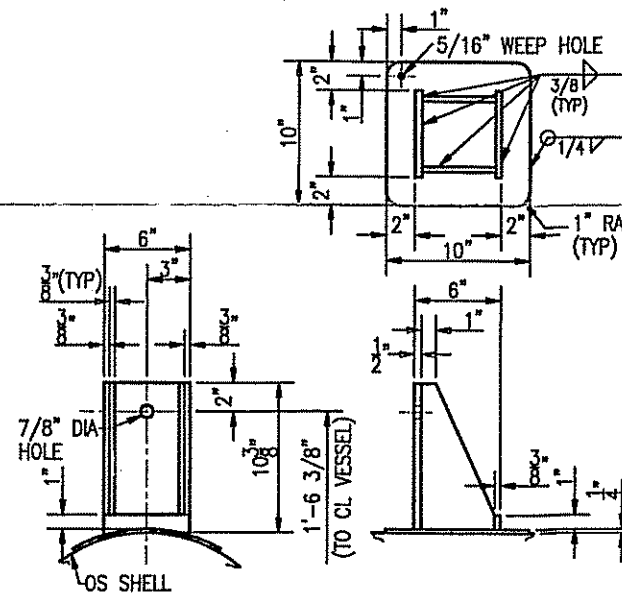


BODY FLANGE DETAIL

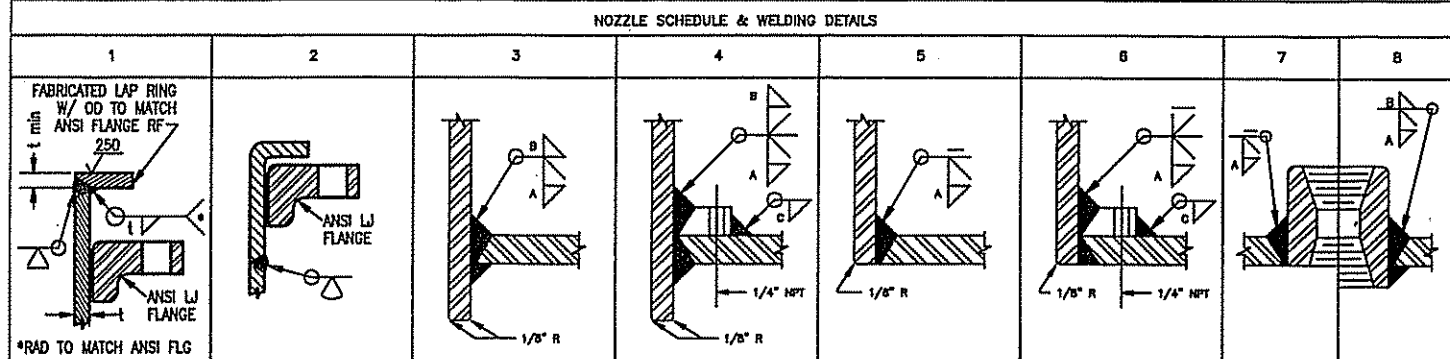


WELD DETAIL 9



SUPPORT LUG DETAIL

MARK	REQ	SIZE	RATING	TYPE	SERVICE	OD	SCH	OS	IS	NECK	PROJECTION	REINF. PAD SIZE	WELDING DETAIL NO	WELD SIZE	REMARKS
N7	1	6"	150#	LJ	PACKING	6.625	3/16	3.5"	0"	NONE	1, 5	3/16			W/ BLIND FLG, GSKT & BOLTS
N6	1	6"	150#	LJ	PACKING	6.625	3/16	3.5"	0"	NONE	1, 5	3/16			W/ BLIND FLG, GSKT & BOLTS
N5	1	2"	150#	LJ	D.P.	2.375	80	6"	0"	NONE	2, 5	3/16			
N4	1	8"	150#	LJ	OUTLET	8.625	3/16	DWG	0"	NONE	1, 5	3/16			
N3	1	2"	150#	LJ	D.P.	2.375	80	6"	0"	NONE	2, 5	3/16			
N2	1	3"	150#	LJ	INLET	3.5	40	6"	0"	NONE	2, 5	3/16			
N1	1	6"	150#	LJ	VENT	6.625	3/16	DWG	0"	NONE	1, 5	3/16			



DESIGN DATA			
VESSEL TO BE CONSTRUCTED IN STRICT ACCORDANCE WITH THE LATEST EDITION OF THE ASME CODE SECTION VIII DIV 1 FOR PRESSURE VESSELS AND IS TO BE SO STAMPED			
DESIGN	MAX. ALLOW. WORKING	MAX. ALLOW. TEMP. & COLD	HYDRO TEST
30	30		47
TEMPERATURE °F	400	400	AMB
DESIGNED BY	DESIGN	DESIGN	
WIND PRESS. LBS/SQ FT			
SEISMIC COEFFICIENT			
DIRECTION (SHIPPING)			
WEIGHT FEEL			
WATER LBS			
OPERATING WEIGHT LBS			
DATA NOT SHOWN ARE NOT FACTORS OF DESIGN			
SHELL	SB-575 (C276)	HEAD	TYPE
THK	3/16"		
FLANGE	SA-105	SHORT	
NOZZLE NECKS	SB-619/SB-575	SNP	
STUB ENDS	SB-368 (C-276)	SUPPORT LUGS	SA-36
BOLTING	SA-193 B7	SUPPORT LEGS	
NUTS	SA-194 2H	SADDLES	
WELDED FITTINGS			
GASKET	0.090" PFA LOOSE LINER W/ 1/8" THK CARLON		
	3400 GASKETS BY EDLON		

NAME PLATE DETAIL

CERTIFIED BY

JAKE HARRIS & SONS, INC.

NAME OF MANUFACTURER

30 PSI AT 400°F

(MAXIMUM ALLOWABLE WORKING PRESSURE)

20°F AT 30 PSI

(MINIMUM DESIGN METAL TEMPERATURE)

531A, 531B, 531C

(MANUFACTURER'S SERIAL NUMBER)

1999

(YEAR BUILT)

WELD PROCEDURES

M2, M4, T2, T12

- GENERAL NOTES**
- FLANGE BOLT HOLES TO STRADDLE PRINCIPAL CENTERLINES OF VESSELS UNLESS INDICATED OTHERWISE.
 - DRILL AND TAP 1/4" DIAMETER HOLE IN REINFORCING PADS.
 - INSIDE RADIUS OF NOZZLE NECKS SHALL BE ROUNDED TO RADIUS OF 1/8" MINIMUM.
 - THIS VESSEL DESIGNED FOR NON LETHAL SERVICE.
 - CONSTRUCTION IN ACCORDANCE WITH THE 1988 ASME CODE SECTION VIII, DIVISION 1 (NO ADDENDUM).
 - EACH REINFORCING PAD OR SEGMENT THERE-OF, AND SIMILAR PARTS SHALL BE TESTED AT 15 PSIG WITH AIR AND SOAP SOLUTION.
 - TEST HOLES SHALL BE PLUGGED WITH GREASE PRIOR TO SHIPMENT.
 - VESSEL SHALL BE THOROUGHLY CLEANED OF ALL SCALE, SPLATTER, FLUX, GREASE, DIRT AND LOOSE FOREIGN MATTER.
 - COAT FLANGE FACES AND MACHINED SURFACES WITH RUST PREVENTATIVE.
 - COVER ALL OPENINGS IN VESSEL PRIOR TO SHIPMENT.
 - ALL KNOWN LOADINGS HAVE BEEN CONSIDERED IN DESIGNING THIS VESSEL IN ACCORDANCE WITH UG-22.
 - VESSEL IS EXEMPT FROM IMPACT TESTING PER UG-20, UCS-66 OR UGA-51.
 - PAIN CARBON STEEL EXTERIOR WITH COAL TAR EPOXY PRIMER 8 MILS DFT, FINISH 8 MILS DFT.
 - ONE 1/8" NPT VENT HOLE LOCATED ON FLANGES.

SOLVENT RECOVERY COLUMN PARTS				
ITEM # 445-01-40529				
JAKE HARRIS & SONS, INC.				
CJ-531				
CHD NUMBER	ENTERED BY	DATE	SCALE	
08000189	BLA	08/11/99	3/4"=1'-0"	
E/C	EQUIP NO	AR NUMBER	PLANT LOCATION	SOFT LOCATION
445	0040-529	99-029	015	03
DRAWING NUMBER				REV
VB-0040-0525				0

REV	DESCRIPTION	DATE
0	"AS BUILT"	4/17/1999

JAKE HARRIS & SONS, INC.

CUSTOMER: **ROHM AND HAAS COMPANY BAYPORT PLANT**

SOLVENT RECOVERY COLUMN PARTS

ITEM # 445-01-40529

P.O. NO.	S.O. NO.	SCALE	DATE	SHEET
CA34263	CJ-531	16	4/18/99	1 OF 1

DRAWN BY	CHK	ENG. NUMBER	REV
DWH	JLH	CJ-531	0

106553