

Carter-Day SpinAway® Dryers offer higher performance at lower cost.

The original, all-stainless steel Carter-Day SpinAway Dryers separate extruded or pelletized products from water slurries in a continuous operation without heat or air moving equipment. No additional drying is required. Most products are discharged from the SpinAway dry enough to go directly to packaging or storage. Surface moistures as low as .04%.

FOUR MODELS AVAILABLE

There are four SpinAway models available. Each has stainless steel construction in all wetted areas. Capacities range from 10,000 lbs./hr. with a maximum water rate of 50 GPM to 30,000 lbs./hr. with a maximum water rate of 200 GPM. All models will handle most polymer beads or pellets including polyethylene, nylon, polypropylene, polystyrene and polyvinylchloride. They will also handle rubber crumbs and pellets. Acceptable slurry temperatures range from 60°-90° ± Centigrade.

The actual dewatering is accomplished by spinning off the moisture through the centrifugal action of a vertical rotor located in the center of the dryer. This

rotor is equipped with balanced impeller blades extending from the bottom of the dryer to the top. The slurry enters the bottom of the SpinAway. As the water is spun off, pellets are carried to the top by the rotating blades. The discharge is located at the top.

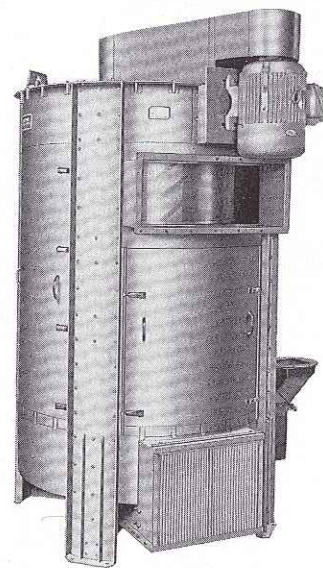
A perforated, stainless steel screen surrounds the rotor. This screen holds the pellets inside the SpinAway but allows the water to pass through. Perforations of 5/64" are standard; larger or smaller openings are available for special applications.

Rotor blades are also designed to serve as scraper blades to prevent the build-up of soft polymers between the screen and the blades. This insures positive, continuous discharge.

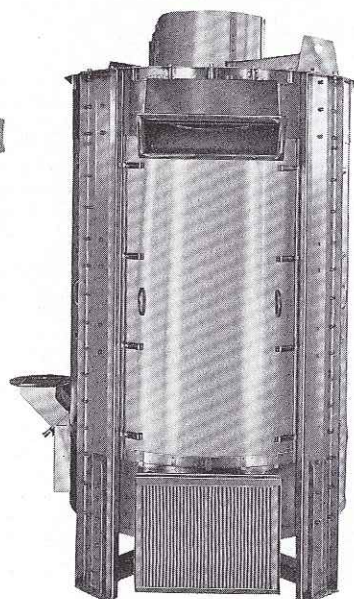
Model 240



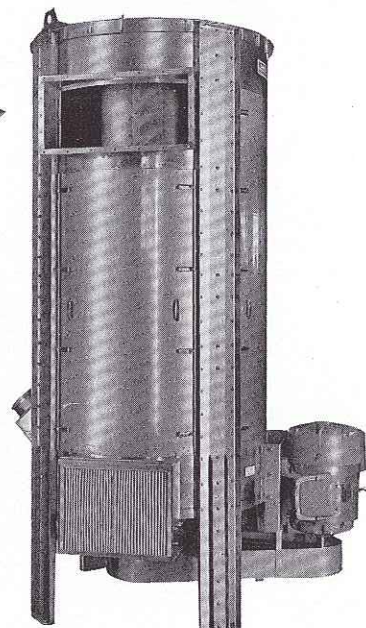
Model 340



Model 345



Model 445



LOWER INITIAL COSTS, LOWER MAINTENANCE COSTS

The initial cost of a SpinAway dryer is 20%-50% less than a centrifuge or screen with the same capacity. You also save because the SpinAway requires no auxiliary heat producing equipment.

As the vertical rotor is the only moving part, operating costs are low and maintenance is minimal, easy to perform when required. Users have reported savings of as much as \$50,000 (and higher in some installations) in operating and maintenance costs when compared with screens and centrifuges in just one year. The entire thrust and radial load of the rotor is carried by the drive bearing. Both pilot and drive bearings have a positive lubrication system.

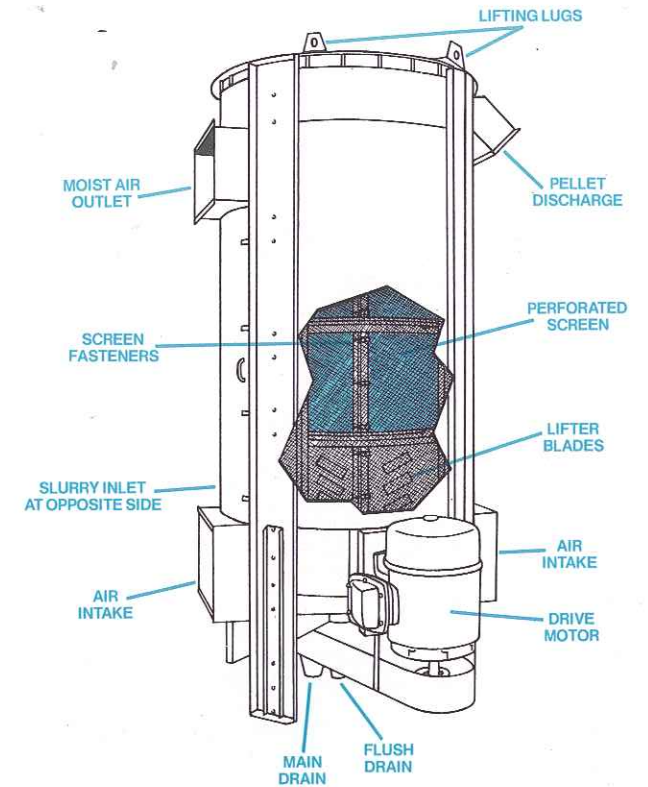
LESS SPACE TO INSTALL

Carter-Day SpinAway dryers require only a fraction of the space needed by other types of drying equipment and auxiliary heaters. The largest SpinAway model, the #445, requires only 28 square feet. Rotors are balanced; resulting in a minimum of vibration (*up edged coin will stand during operation*). The SpinAway can be installed with no structural modifications. It can be installed on catwalks above ground level to save production floor space if necessary.

CARTER-DAY SYSTEMATICS

When you install a Carter-Day SpinAway dryer, you're buying Carter-Day Systematics. You can be sure of assistance with equipment selection, engineering, installation and start-up.

Then you'll continue to get Carter-Day's after-sale service.



All Carter-Day SpinAway dryers have stainless steel in all wetted areas. Continuous-flow on a 24-hour basis means uninterrupted production. Units are completely self-contained. Installation is simple. Complete cleanout is quick and easy, requires no tools.



PRESSURIZED SPINAWAY DRYERS

Standard SpinAway models are available in pressurized construction for special applications. Airtight form welded seams and positive seal quick release door. For specific details on pressurized models, contact Carter-Day.

Warranty

Carter-Day Company will repair or replace with a similar part, f.o.b. its factory where made, any part of its own manufacture in the machines in this product bulletin which, within twelve months from shipment, proves defective in material or workmanship. The Company reserves the option to require the purchaser to deliver such defective part to the Company for inspection, f.o.b. its said factory, within the twelve month period. This warranty does not apply to stress corrosion cracking caused by chlorides in the pellet water.

SPECIFICATIONS AND DIMENSIONS*

Model	Over-all Width	Height	Motor Required	Motor RPM	Weights in Pounds			Cu. Ft. Export	Capacities** Pounds Per Hour	Density	Water Input, GPM (Dryer Only)	Temp.
					Net	Domestic Shipping	Export Shipping					
240	53"x60"	68"	5HP	1800	1160	1485	1785	152	10,000	35 lb. cu. ft.	50	60°-90°C
340	53"x60"	88"	7½HP	1800	1465	1835	2065	190	15,000	35 lb. cu. ft.	100	60°-90°C
345	57"x67"	88"	10HP	1800	1530	1885	2315	220	22,000	35 lb. cu. ft.	150	60°-90°C
445	56"x72"	117"	15HP	1200	2405	2815	3472	313	30,000	35 lb. cu. ft.	200	60°-90°C

*Dimensions and specifications subject to change without notice or manufacturer obligation. Contact our field or home office for latest certified drawings.
**Capacities based upon 3/16" pellets during continuous 24-hour operation.

ADL3 X