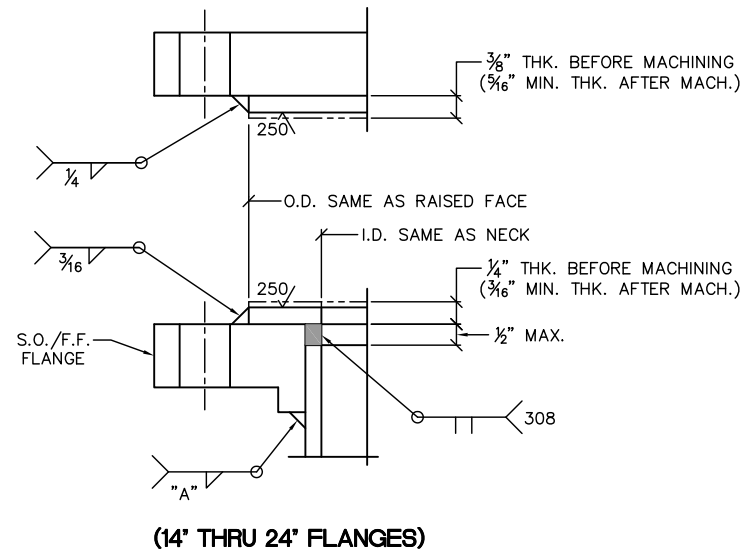
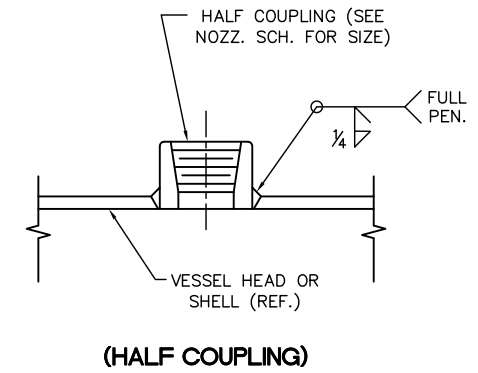


TYPICAL NOZZLE DETAIL (12' AND SMALLER)
 (WORK THIS DETAIL WITH NOZZLE DETAIL DIMENSION SCHEDULE)

NOTE:
 ALL RE-PADS SHALL HAVE ONE (1) - 1/4" N.P.T. TELLTALE HOLE PER SECTION OF RE-PAD (IF SPLIT). TELLTALE HOLE SHALL BE LOCATED AT THE NOZZLE HORIZONTAL CENTERLINE IN THE "AS INSTALLED" POSITION. FILL w/ GREASE BEFORE FINAL MAKE-UP AND INSTALL HEX. HEAD PLUG OF THE SAME MATERIAL AS THE RE-PAD..



(14' THRU 24' FLANGES)



TYPICAL COUPLING DETAILS

Code Symbol		CERTIFIED BY DcR CONSTRUCTION, INC. 4101 HOLDEN RD. LAKELAND FL, 33811	
U	W		
Code Marks		Max. Allowable Working Pressure PSIG @ °F	
		50	250
		Min. Design Metal Temp. °F @ PSIG	
		-20	50
User Order No.		Max. Allowable External Pressure PSIG @ °F	
64001-64000637029		15	250
User Equip No.		Mfg. Serial no. Year Built	
C-4411		4411-7798	2007
ACID REDUCTION COLUMN #2			

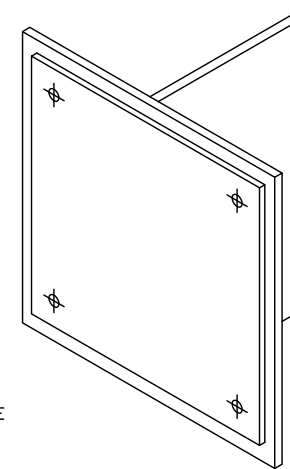
REF. CONN	SIZE	NOZZLE LOCATION HEAD, SHELL, ETC.	FLANGE TO NECK WELD DIM. "B"	NECK "SET-BACK" AT FLG. DIM. "A"	NECK TO SHELL, HD. OR RE-PAD WELD DIM. "C"	RE-PAD TO SHELL OR HEAD WELD DIM. "D"	NECK TO SHELL WELD AT INT. PROJ. DIM. "E"
A1	24"	SHELL	3/16	1/4	3/16	3/16	N.A.
A2	24"	SHELL	3/16	1/4	3/16	3/16	N.A.
B	18"	TOP HEAD	1/4	5/16	3/16	N.A.	N.A.
C	8"	SHELL	1/4	5/16	3/16	N.A.	N.A.
D	4"	BOTTOM HEAD	3/16	1/4	3/16	N.A.	N.A.
E	3/4"	SHELL	1/8	3/16	1/8	N.A.	N.A.
F	6"	SHELL	3/16	1/4	1/4	N.A.	N.A.
G1	3"	SHELL	3/16	1/4	1/4	N.A.	N.A.
G2	3"	SHELL	3/16	1/4	1/4	N.A.	N.A.
H1	3/4"	SHELL	1/8	3/16	1/8	N.A.	N.A.
H2	3/4"	SHELL	1/8	3/16	1/8	N.A.	N.A.
J	12"	SHELL	3/16	1/4	3/16	3/16	N.A.
K1	1/2"	SHELL	1/8	3/16	1/8	N.A.	N.A.
K2	1/2"	SHELL	1/8	3/16	1/8	N.A.	N.A.
L	3"	SHELL	3/16	1/4	1/4	N.A.	N.A.
M	3"	SHELL	3/16	1/4	1/4	N.A.	N.A.
Q1	2"	SHELL	3/16	1/4	3/16	N.A.	N.A.
Q2	2"	SHELL	3/16	1/4	3/16	N.A.	N.A.
SA	20"	SHELL	3/16	1/4	3/16	N.A.	N.A.
SO	12"	SHELL	3/16	1/4	3/16	N.A.	N.A.

GENERAL NOTES:

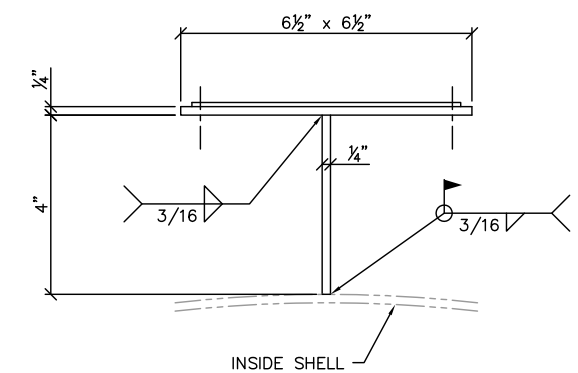
1. GENERAL LAYOUT SHOWN, EXACT LAYOUT AND LETTERING STYLE MAY VARY, BUT MUST CONTAIN ALL INFORMATION SHOWN.
2. ATTACH NAMEPLATE TO BRACKET W/ S.S. RIVETS.
3. MINIMUM NAMEPLATE SIZE = 6" x 6" LG.
4. MINIMUM STAMPED LETTERING SIZE = 5/32."
5. NAMEPLATE MATERIAL - ETCHED ZINC

FIELD NOTE:

NAMEPLATE TO BE CENTERED OVER SHELL MANWAY.



NAME PLATE ASSEMBLY DETAIL
 SCALE: NONE



NAME PLATE ASSEMBLY PLAN
 SCALE: NONE

DWG. NO.	REFERENCE DRAWING
7798-MM-C4411-01	C-4411 - ASSEMBLY

This drawing contains intellectual property of HT/DcR Engineering, Inc. All ideas, designs, arrangements and know-how remain the property of HT/DcR Engineering, Inc. Any use of this information by entities other than the title block named entity is prohibited. Use of this drawing by the title block named entity is limited to the specific title block named project. Use on other projects is strictly prohibited.

Florida Engineering Business
 License No. 26522

REV.	DRAWING HISTORY	BY	DATE	ENGINEER	P.W.	07-07-07	PROJ. NO.
A	ISSUED FOR APPROVAL	F.T.P.	08-20-07	DESIGNED BY	F. PIRILLO	07-08-07	7798
0	ISSUED FOR CONSTRUCTION	DGB	09-10-07	DRAWN BY	J. RHODIG	07-08-07	CAD FILE 7798-MM-C4411-03
1	CERTIFIED AS-BUILT	AGB		DRFTG. SUPVR.	P. WHITE	07-08-07	SCALE AS NOTED

HT/DcR Engineering, Inc.
 2830 PARKWAY STREET
 LAKELAND, FL 33811
 PHONE: 863-904-2880
 FAX: 863-913-1091

ALTRA BIOFUELS
 CARLETON, NEBRASKA
 C-4411-ACID REDUCTION COL. #2 - DETAILS
 MECHANICAL
 DWG. NO. 7798-MM-C4411-03 REV 1