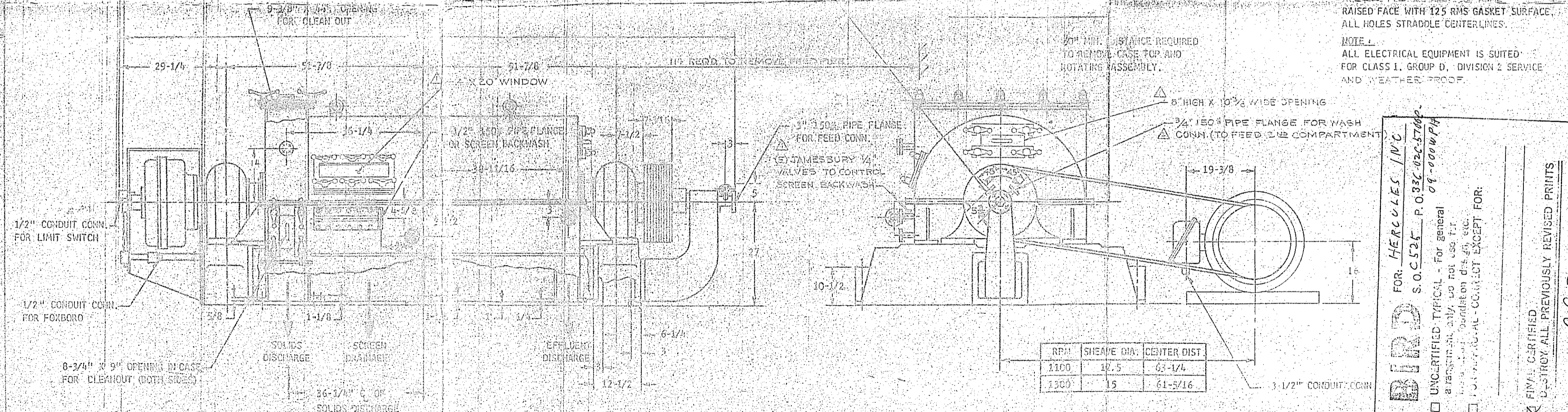
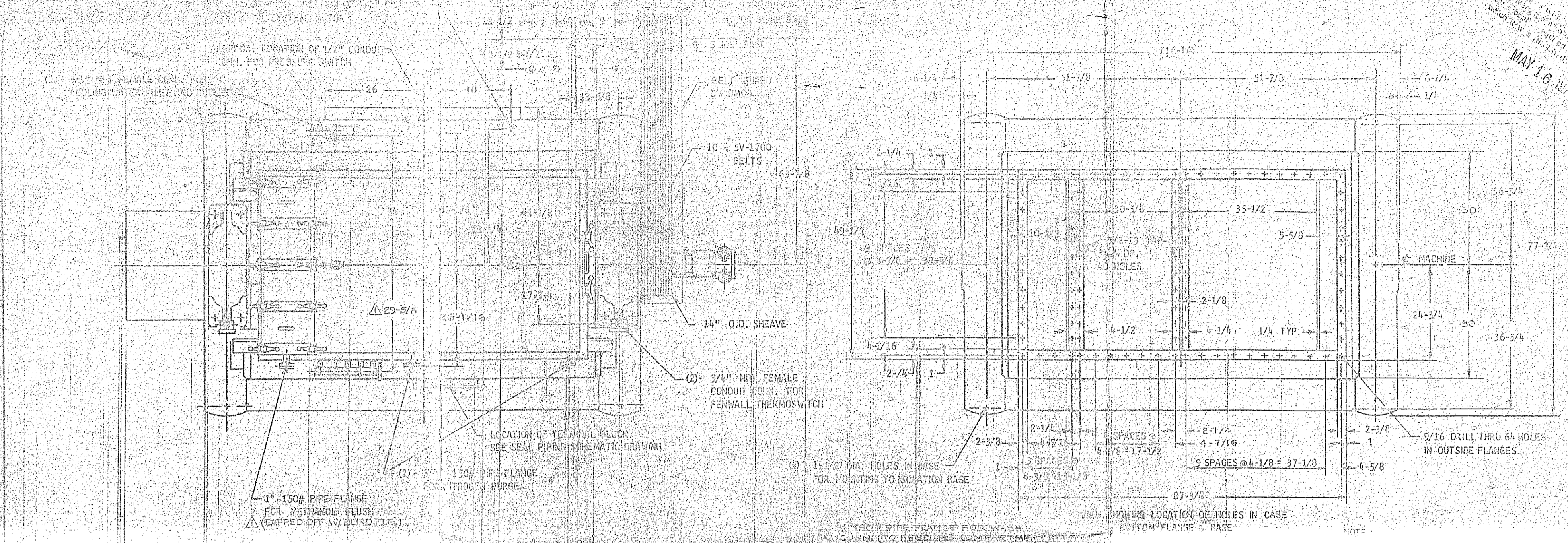


MAY 16 1973



RAISED FACE WITH 12.5 RMS GASKET SURFACE, ALL HOLES STRADDLE CENTERLINES.  
 NOTE 1  
 ALL ELECTRICAL EQUIPMENT IS SUITED FOR CLASS 1, GROUP D, DIVISION 2 SERVICE AND WEATHER PROOF.

**DIRD** FOR HERCULES INC  
 S.O.C.526 P.O. 336-020-5700  
 09-0000714  
 UNCERTIFIED TYPICAL - For general use only. Do not use for: radiation dis. etc.  
 U.S. PATENT OFFICE - CONTACT EXCEPT FOR:  
 FINAL CERTIFIED  
 U.S. PATENT OFFICE PREVIOUSLY REVISED PRINTS  
 SIGNED:                      DATE: 5-16-73

RPM	SHEAVE DIA.	CENTER DIST.
1100	12.5	63-1/4
1300	15	61-5/16

FOR MACHINE SERIAL NO. 58-276 AND 58-277

JPF43667

TOLERANCE SURFACE		MATERIAL	
DCM	±.01	303	STAINLESS STEEL
A	±.005	304	STAINLESS STEEL
DD	±.002	316	STAINLESS STEEL
CD	±.001	304	STAINLESS STEEL
AV28	±.0005	304	STAINLESS STEEL