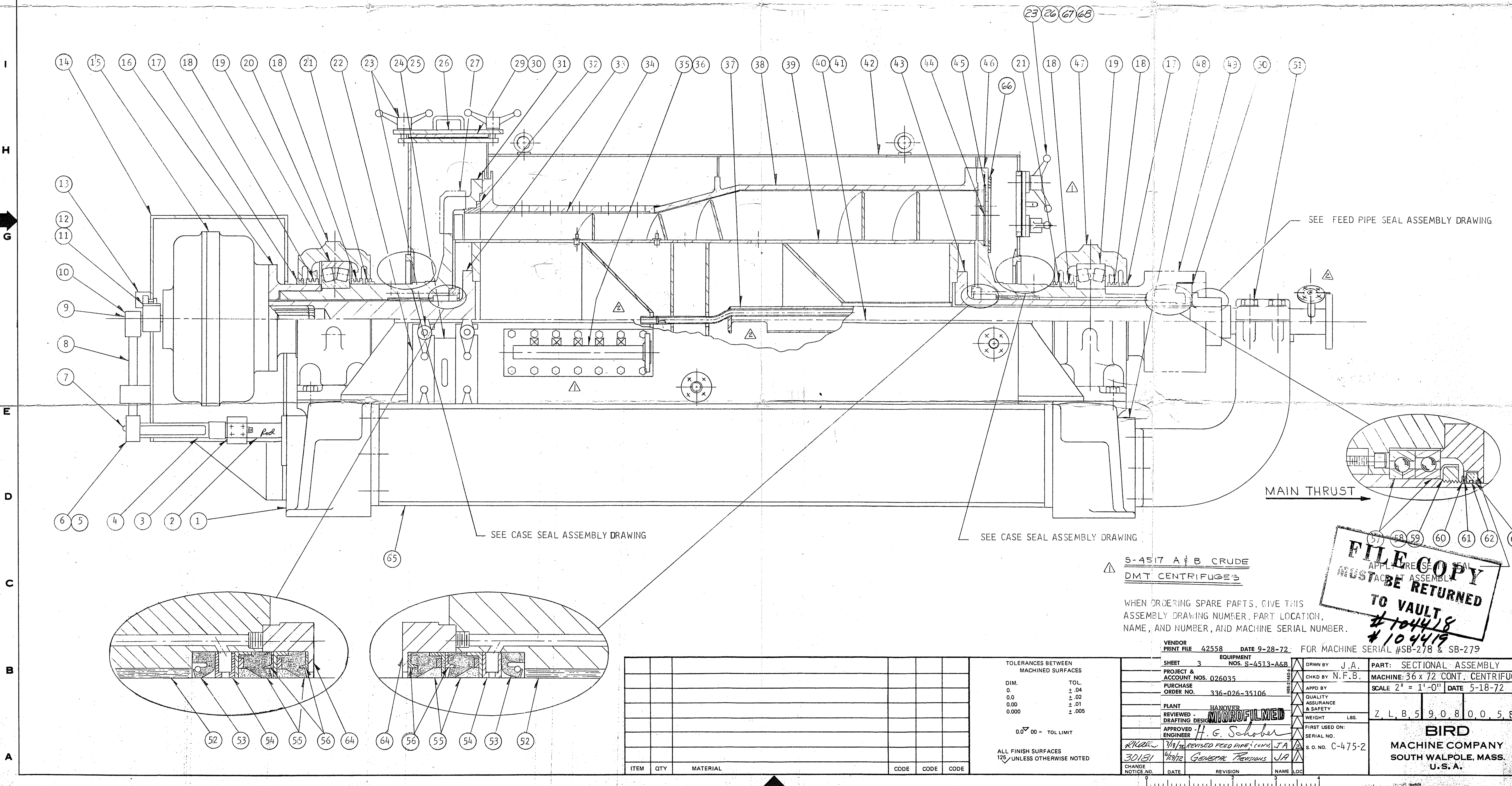


11 10 9 8 7 6 5 4 3 2 1

LOC.	REQD.	PART NO.	PART NAME	LOC.	REQD.	PART NO.	PART NAME	LOC.	REQD.	PART NO.	PART NAME
1	1	ZLB0-020-00010	BASE GEAR END	26	7	TLB5-074-00190	CLAMP	51	1	ZLB5-037-00500	FEED PIPE BRACKET
2	1	VLB0-352-00010	MOUNTING ROD	27	6	WLB5 312 00281	PLOW	52	2	WLB6-024-00040	CONVEYOR BUSHING
3	1	WLB5-302-00010	MOUNTING BLOCK	28				53	2	H330-055-00002	SEAL
4	1	VLB4-391-00010	DUMMY BAR	29	1	TLB5-084-00270	COVER	54	2	VLB6-350-00230	SPACER RING
5	1	VLB7-074-00050	CLAMP PLATE	30	1	TLB5-161-00860	GASKET	55	4	H330-055-00004	HIGH PRESSURE SEAL
6	1	WLB6-033 00010	TORQUE ROD BRACKET	31	1	ZLB5-182-00590	SOLIDS BOWL HEAD	56	4	TLB5-074-00081	CLAMP
7	1	A701-050-00250	RIVET	32	1	WLB5-469-00511	SOLIDS WEIR	57	1	H010-472-00001	THRUST BEARINGS
8	1	TLB5-352-00040	TORQUE ROD	33	1	WLB5-449-00080	TRUNNION - GEAR END	58	1	A511-481-00240	LOCKWASHER
9	1	VLB6-304-00071	SHEAR PIN, A = .875	34	2	ZLB5 366-00101	SCREEN PLATE	59	1	A448-466-00240	LOCK NUT
10	1	VLB7-074-00050	SHEAR PIN HOLDER	35	1	XLB5-183-00061	SPRAY HEADER	60	1	TLB6-340-00010	BACKING RING
11	1	VLB6-381-00020	TORQUE SLEEVE	36	1	TLB5-161-00850	GASKET	61	1	H403-581-00001	WAVE WASHER
12	1	VLB0 067-00010	CAM PLATE	37	1	XLB5-310-00691	FEED PIPE	62	1	H280-047-00113	O-RING
13	1	C052-001-00004	LIMIT SWITCH	38	1	ZLB5-029-00980	SCREEN BOWL	63	1	TLB5-350-00240	RING SEAL
14	1	ZLB5-173-00071	GEAR GUARD	39	1	ZLB5-083-00181	CONVEYOR	64	2	WLB5-068-00260	CAP
15	1	SCG3-903-00240	GEAR UNIT, 4Q/1	40	1	ZLB5-071-00541	CASE BOTTOM	65	2	WLB5-019-00010	CONNECTING BEAM
16	1	WLB5-149-00030	GEAR FLANGE	41	2	TLB5-161-00840	HALF CASE GASKET	66	4	TLB5 074 00140	CLAMP
17	2	WLB5-345-00060	DIRT FLINGER	42	1	ZLB5-073-00571	CASE TOP	67	1	TLB5-084-00280	COVER
18	4	WLB5-345-00050	OIL FLINGER	43	1	WLB5-448-00131	TRUNNION - FEED END	68	1	TLB5-161-00880	GASKET
19	2	H012-866-00001	ROLLER BEARING	44	4	WLB5-469-00281	ORIFICE PLATE	69	1	TLB5-074-00200	CLAMP - NOT SHOWN
20	1	ZLB5-303 00300	PILLOW BLOCK - FREE	45	4	H280-080-00055	O-RING	70	1	TLB5 084 00290	COVER - NOT SHOWN
21	2	TLB5-339-00120	FLINGER	46	1	XLB5-181-00390	EFFLUENT BOWL HEAD	71	1	TLB5-161-00890	GASKET - NOT SHOWN
22	4	TLB5-074-00180	CLAMP	47	1	ZLB5-303-00290	PILLOW BLOCK - HELD				
23	28	H077-075-00001	HANDLE	48	1	ZLB0-022-00011	BASE - SHEAVE END				
24	2	TLB5-084-00261	COVER	49	1	XLB5-375-00080	DRIVEN SHEAVE				
25	2	TLB5-161-00820	GASKET	50	1	WLB5-069-00270	THRUST BEARING CAP				



▲ S-4517 A & B CRUDE
DMT CENTRIFUGES

WHEN ORDERING SPARE PARTS, GIVE THIS ASSEMBLY DRAWING NUMBER, PART LOCATION, NAME, AND NUMBER, AND MACHINE SERIAL NUMBER.

VENDOR PRINT FILE	42558	DATE	9-28-72	FOR MACHINE SERIAL #	SB-278 & SB-279
SHEET	3	EQUIPMENT NOS.	S-4513-A&B	DRWN BY	J.A.
PROJECT & ACCOUNT NOS.	026035	CHKD BY	N.F.B.	PART:	SECTIONAL ASSEMBLY
PURCHASE ORDER NO.	336-026-35106	APPD BY		MACHINE:	36 x 72" CONT. CENTRIFUGE
PLANT	HANOVER	QUALITY ASSURANCE & SAFETY		SCALE	2" = 1'-0" DATE 5-18-72
REVIEWED - DRAFTING DESIGN	MICROFILMED	WEIGHT	LBS.		Z, L, B, 5, 9, 0, 8, 0, 0, 5, S, 2
APPROVED - ENGINEER	H. G. Schuber	FIRST USED ON:		SERIAL NO.	
CHANGE NOTICE NO.	30151	S.O. NO.	C-475-2		
DATE	10/12	REVISION		NAME	LOC.

ITEM	QTY	MATERIAL	CODE	CODE	CODE

TOLERANCES BETWEEN MACHINED SURFACES
DIM. TOL.
0 .04
0.0 .02
0.00 .01
0.000 .005

0.0750 = TOL LIMIT
ALL FINISH SURFACES UNLESS OTHERWISE NOTED

BIRD
MACHINE COMPANY
SOUTH WALPOLE, MASS.
U.S.A.