

NOZZLE SCHEDULE										
MK.	SIZE	QUAN.	NOZZLE FLG.			NECK		PROJ.	ORIENT.	SERVICE
			TYPE	RATG	MAT'L	SCH.	MAT'L			
A	16"	1	LJ	150	105	1/4"	304	SEE DWG.	SEE ORIENT.	INLET
B	12"	1	R	150	304	—	—	—	—	OUTLET
C	16" SQ	1	R	SPECIAL	304	1/4"	304	—	—	FILTER
D	5"	1	R	SPECIAL	304	40	304	—	—	BINDICATOR
E	24"	1	LJ	150	105	1/2"	304	—	—	MANHOLE W/BLIND
F	3"	1	R	PAD	150	304	—	—	—	SAMPLE W/BLIND
G	2"	2	LJ	150	105	40	304	—	—	INERT GAS
H	4"	1	LJ	150	105	40	304	—	—	CAGING SEE NOTE #3
J	16"	1	LJ	150	105	1/4"	304	—	—	FILE W/BLIND
L	5"	1	R	PAD	SPECIAL	304	—	—	—	LOW LEVEL
N	5"	1	R	PAD	SPECIAL	304	—	—	—	SPARE W/BLIND FLG
O	1"	1	SPECIAL	—	—	—	—	—	—	N2 AERATION

DESIGN DATA
 * BASED ON YIELD STRENGTH FOR EXPLOSION

DESIGN CONDITIONS:
 SHELL 110 * PSIG 200 °F
 JACKET PSIG °F

OPERATING CONDITIONS:
 SHELL ATMOSPHERIC PSIG 200 °F
 JACKET PSIG °F

SPECIFIED CORROSION ALLOWANCE: 0.000

CODE: CAPE IND. SCS-3T1 STAMP: NONE

STRESS RELIEF: NONE RADIOGRAPH: NONE

TYPE HEADS:
 TOP ASME FLANGED & DISHED W/ 96" D.R. - 6 1/2" K.R. - 1 1/2" S.F.
 BOTTOM CONICAL W/ 60° APEX ANGLE

TYPE SUPPORT: SUPPORT LUGS (4 REQ'D.)

JOINT EFF.:
 VESSEL - HEAD 80% SHELL 70%
 JACKET - HEAD SHELL

SHIPPING WT.: 5000 NOM. LBS. FILLED WITH CONTENTS: 44000 NOM. LBS.

CAPACITY: 600 CUBIC FEET

HYDROSTATIC TEST:
 SHELL VISUAL PSIG
 JACKET PSIG

CONTENTS: PTA SOLIDS - 65 LBS. / CU. FT.

SHELL: VESSEL SA-240-304
 JACKET SA-240-304

HEADS: VESSEL SA-240-304
 JACKET SA-240-304

FLANGE SPEC.: SA-240-304; SA-105
 EXTERNAL PIPE SPEC.: SA-312-WLD-TP 304; SA-240-304
 INTERNAL PIPE SPEC.:
 CLADDING OR LINING SPEC.: SA-240-304
 BOLTING: SA-193-B7 NUTS: SA-194-2H
 GASKET: 1/8" THK. JM #91 (FURNISH SPARE GASKET)

INTERNALS:
 SUPPORTS: CARBON STEEL
 INSULATION:
 PAINTING: CARBON STEEL ONLY: COMMERCIAL BLAST (SSPC-SP.6) AND PAINT: 3 TO 5 M.D.F.T. CARBO ZINC 11

- COVER ALL FLANGES, OPENINGS AND MACHINED SURFACES PRIOR TO SHIPMENT UNLESS OTHERWISE NOTED.
- NOZZLE BOLTS HOLES SHALL STRADDLE 0-180° CENTERLINE OR ITS PARALLEL UNLESS OTHERWISE NOTED.
- PROTECTOSEAL N 4974 GAGE HATCH FOR MK. "H" ONLY.
- ALL INTERNAL WELD TO BE GROUND SMOOTH.
- ALL SPARE GASKETS MUST BE SHIPPED WITH SURGE BIN.
- ALL GASKET SURFACES SHALL HAVE 125 RMS FINISH OR SMOOTHER.

WHITING METALS
CAMDEN SOUTH CAROLINA

CAPE INDUSTRIES
P.O. # P 65612

UNGROUND PTA SURGE BIN
EQUIP. No. T-4083

REVISIONS			SCALE	MATERIAL
NO.	DATE	BY		
1	11-19-87	GLS	AS NOTED	304 S.S.
2				
3				
4				
5				

DRAWING NO. F-4886
SHT. 1 OF 3

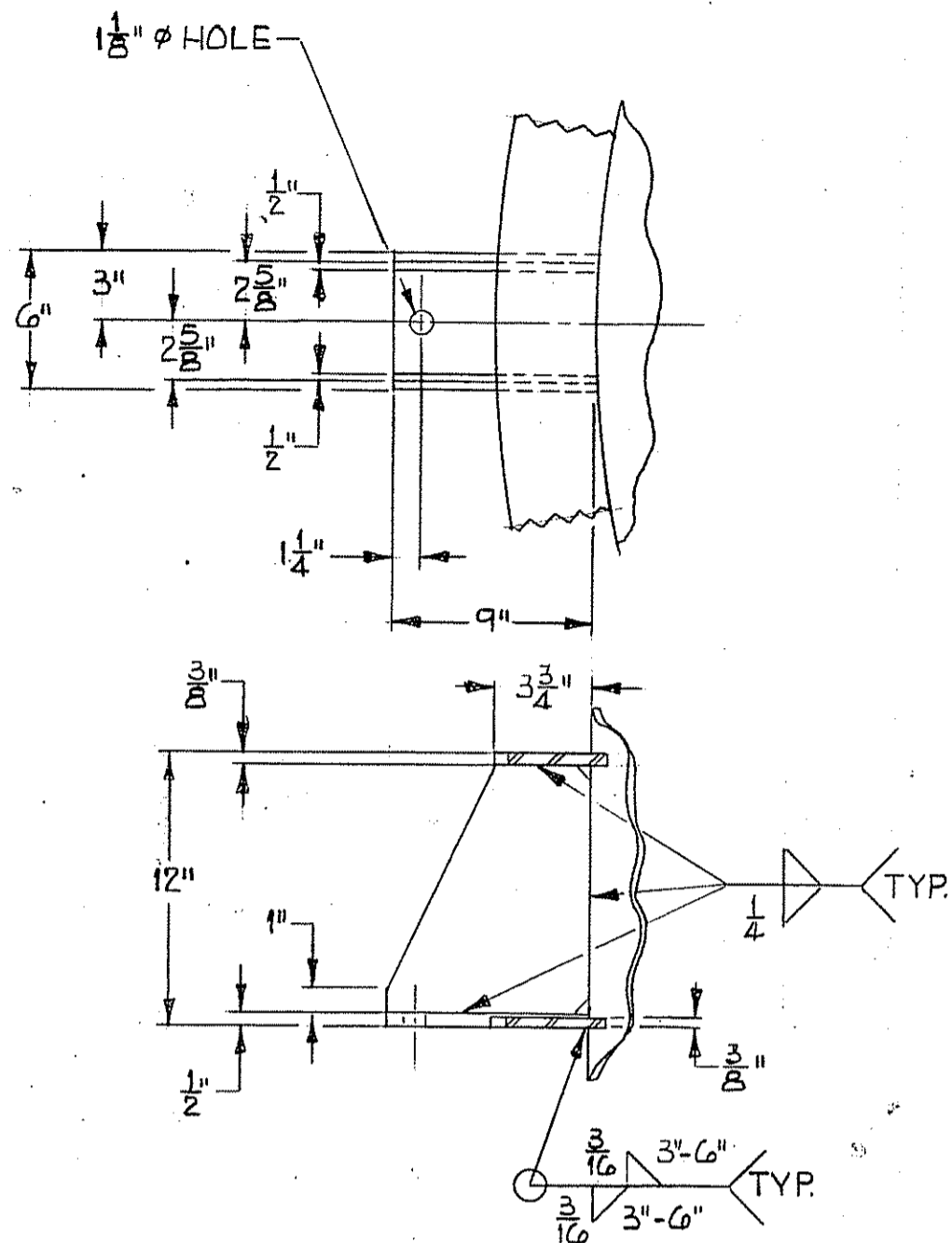
FINAL PRINT

ISSUED BY: *[Signature]*

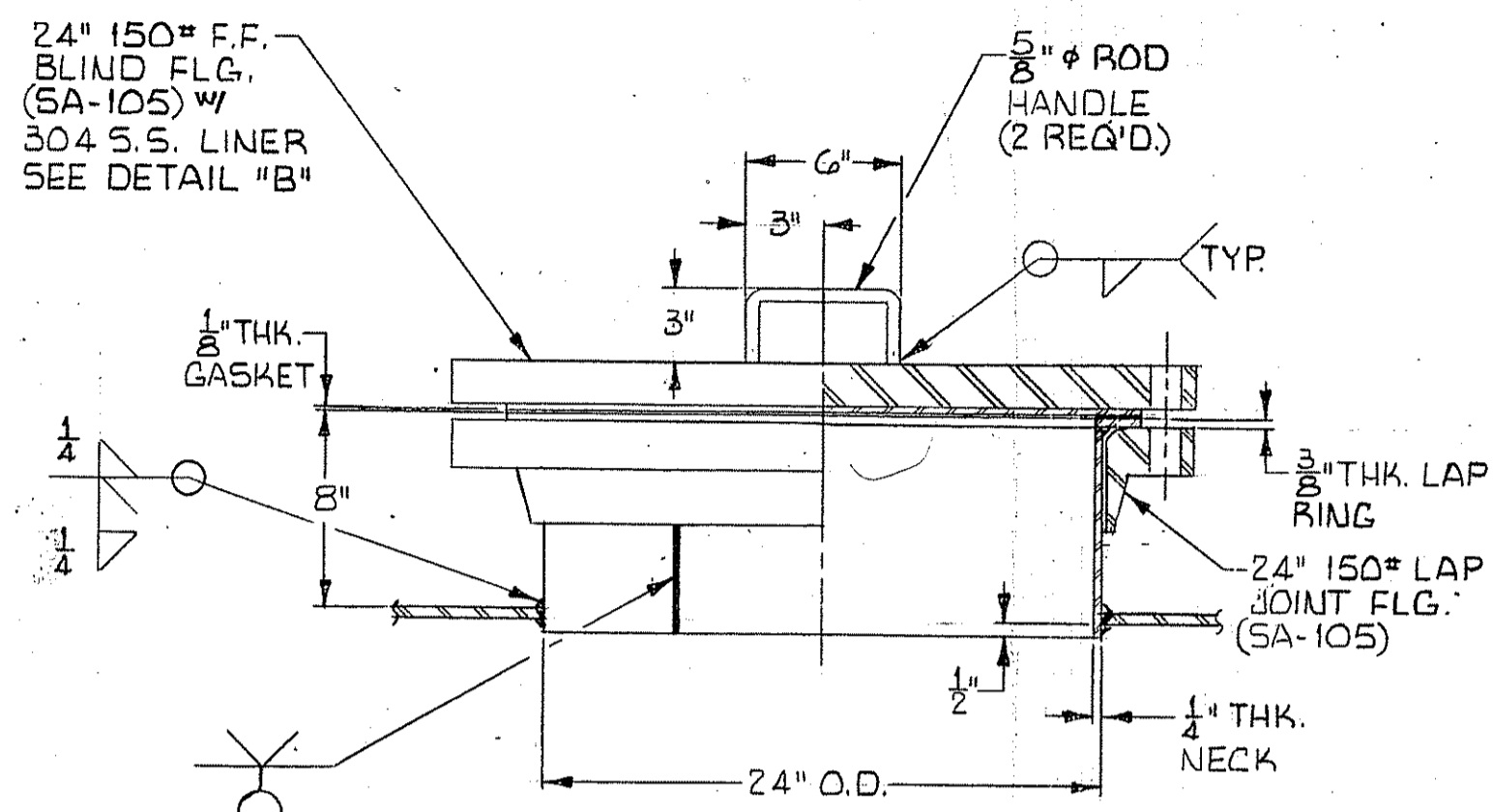
DATE: 3-8-88

BRUNING 44-131 63242-1

#103995

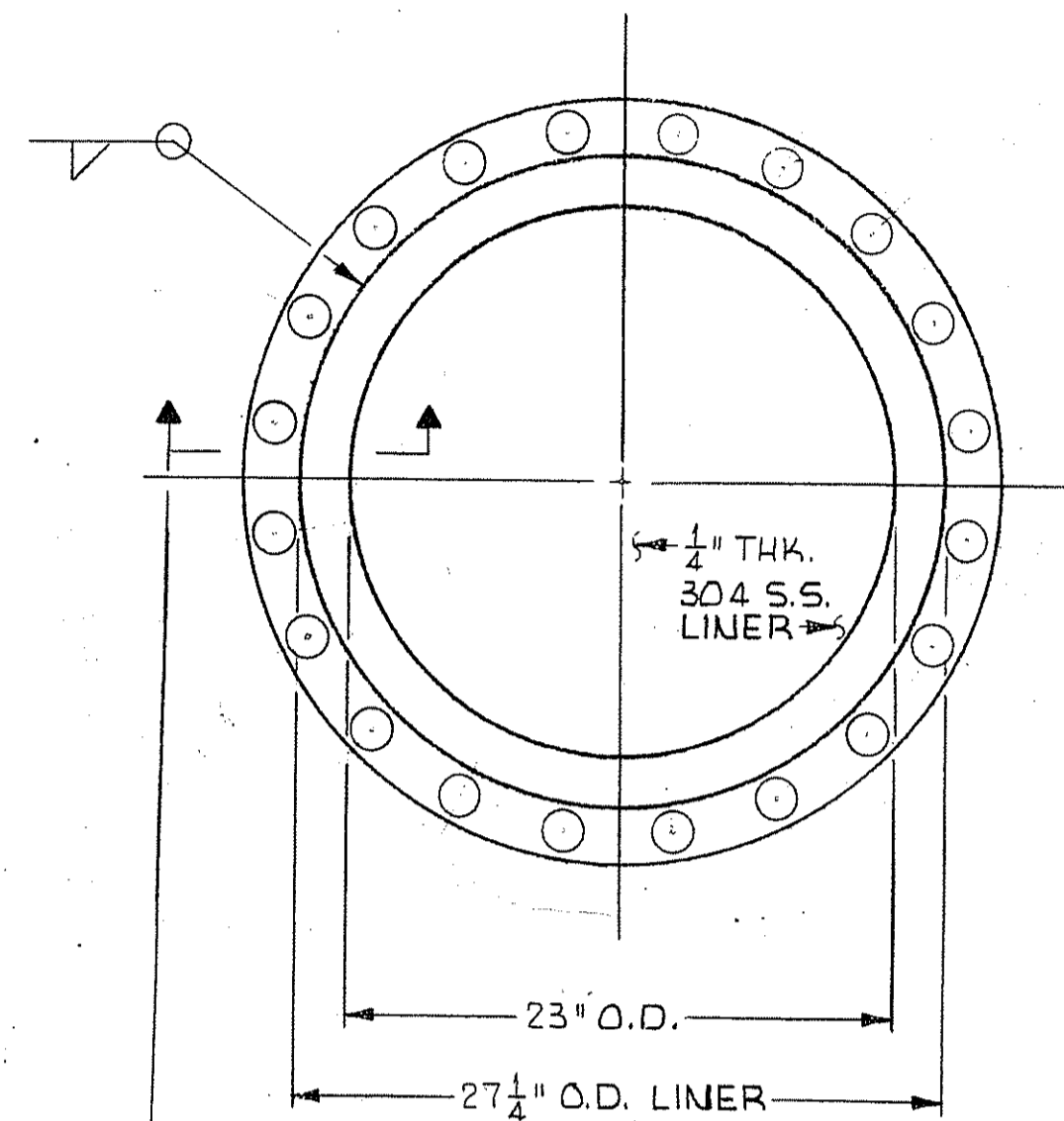


SUPPORT LUG DETAIL



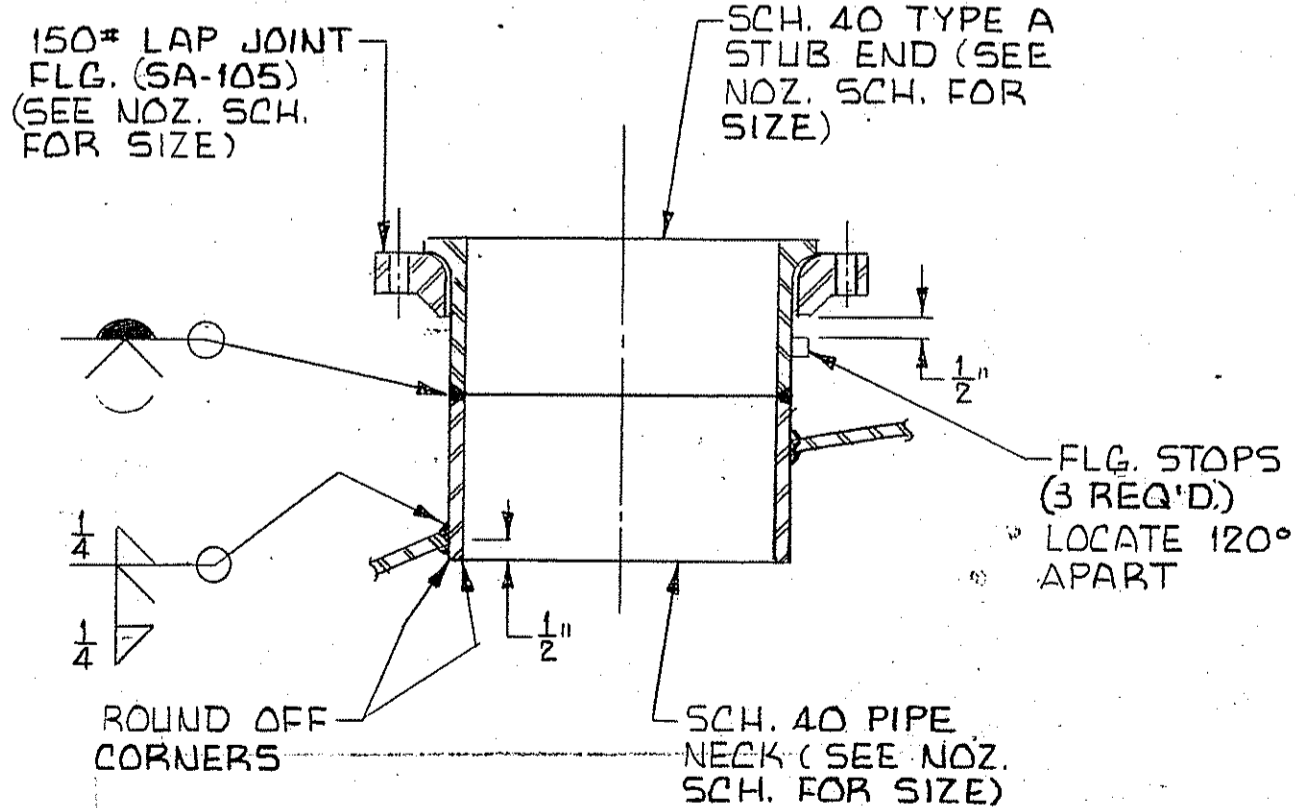
MANWAY MK. "E" DETAIL

1 1/2" = 12"



DETAIL "B"

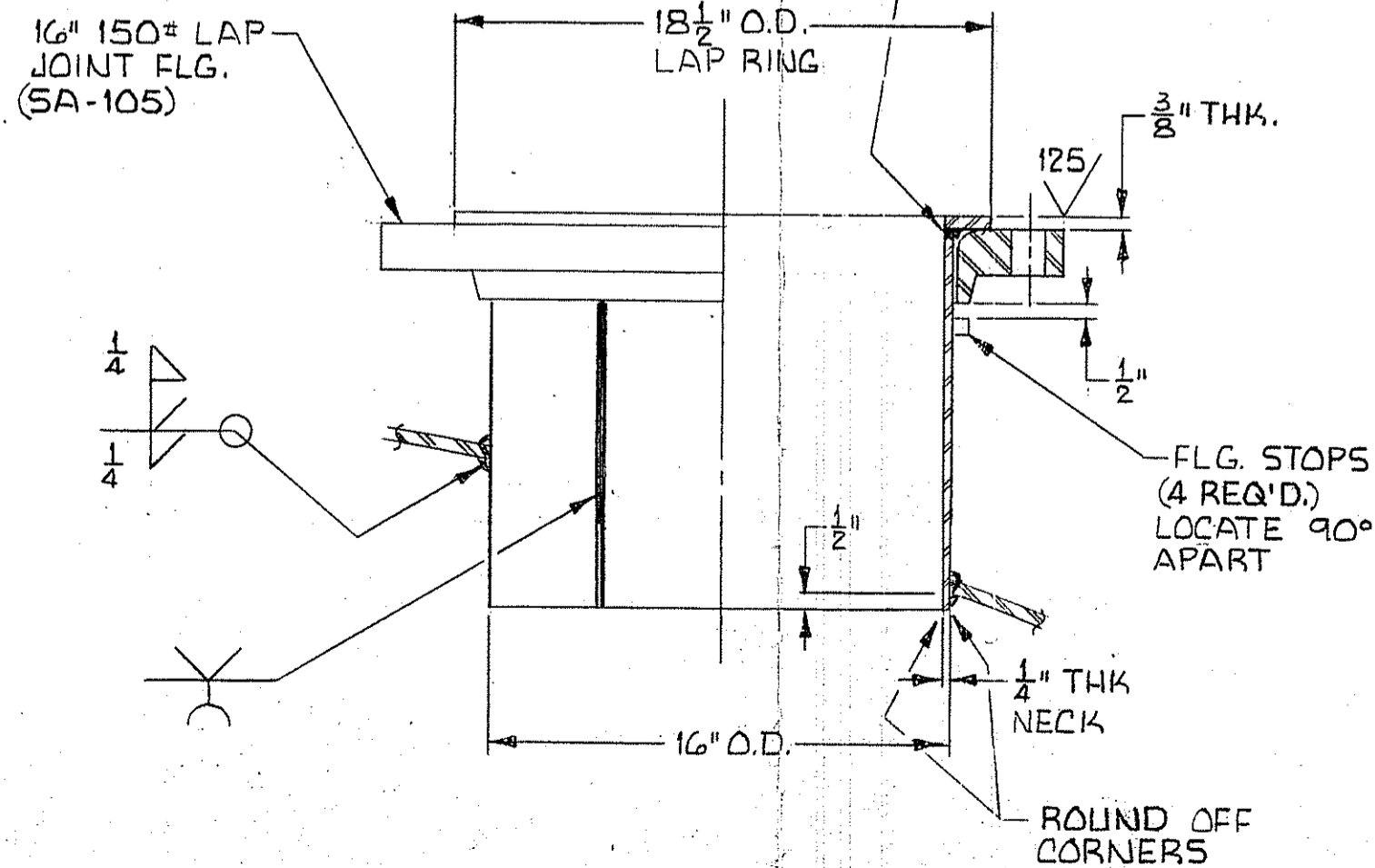
1 1/2" = 12"



MK. "A" & "J" DETAIL

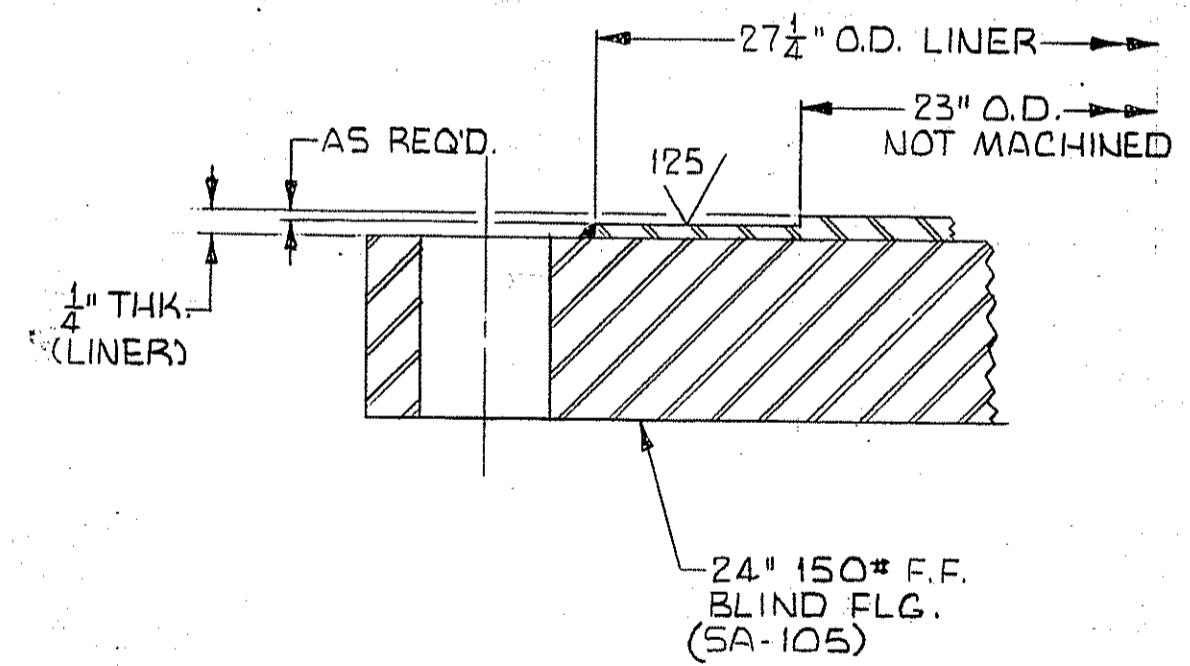
NOT TO SCALE

FILES



MK. "A" & "J" DETAIL

NOT TO SCALE



FINAL PRINT

ISSUED BY: *A. Stevenson*

DATE: 3-8-88

REVISIONS		WHITING		METALS	
NO.	DATE	CAMDEN		SOUTH CAROLINA	
1		CAPE INDUSTRIES		P.O. # P65612	
2		DETAIL SHEET			
3		FOR: UNGROUND PTA SURGE BIN			
4		DRAWN BY: GLS	SCALE	MATERIAL: 304 S.S.	
5		CHK'D	DATE: 1-5-88	DRAWING NO. F-4886	
		TRACED	APP'D	SHT. 3 OF 3	