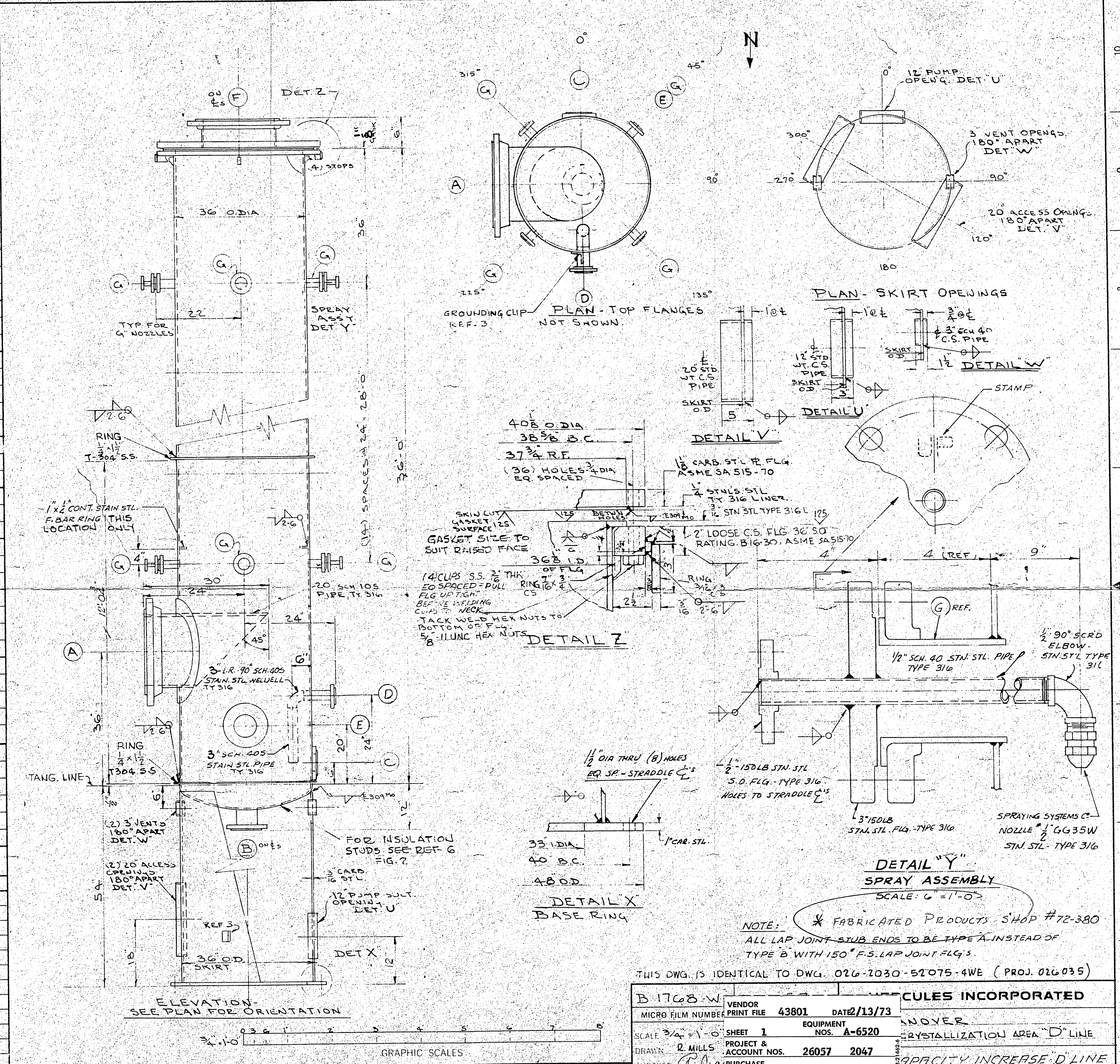


SPECIFICATIONS	
CONTENTS	METHANOL
CAPACITY OPERATING	225 GALS DESIGN — GALS TOTAL 1880 GALS
AGITATION	NONE
HEATED	NS
COOLED	No
JACKET	No
COIL	No
OTHER	NONE
PRESSURE & TEMPERATURE	SHELL: DESIGN 14 PSIG AT 100 F OPERATING ATMO PSIG AT 100 F TEST HYDROSTATIC FULL OF WATER PSIG HOLD 2 HOURS CORROSION ALLOWANCE NONE CONSTRUCTION CODE SCS-3T1 STAMPING NONE INSPECTION: HERCULES YES NATIONAL BOARD NO OTHER VENDOR X-RAY INSPECTION: NO FILM INSPECTION: HERCULES NO NATIONAL BOARD NO PAINTING: CARBON STL PARTS- 11CS-661 WEIGHTS: EMPTY 5900 LBS. FILLED WITH WATER 21,500 LBS. EXTERNAL LOADING LBS. FILLED WITH CONTENTS LBS. TOTAL MAXIMUM LOAD 21,500 LBS.
MATERIAL	STAINLESS STL, ASME SA 240, TYPE 316 THICKNESS 3/16
SEAMS	WELDED ELEC. JOINT TYPE DOUBLE BUTT EFFICIENCY —
MATERIAL	TOP: SEE DETAIL Z BOTTOM: STAINLS STL, ASME SA 240, TY 316
TYPE	ASME FLGD & DISHED
THICKNESS	1/4"
MATERIAL	STAINLS STL, ASME SA 312, TY 316 THICKNESS: SEE NOZZLE DATA
TYE	PADS OR LAP JT. STUB ENDS WITH 150 LB. F. ST. LAP JT. AMER STD. FLGS.
FOR TEST	JM-60 1/16" THK.
FOR COMPLETED CONNS.	SUPPLY NEW FLEXITALLIC STYLE "CG" STN STL TYPE 316
MATERIAL	THICKNESS
TYPE HEAD	THICKNESS
MATERIAL	DIAMETER
LIN. FT.	SQ. FT. SURFACE
INTERIOR	EXTERIOR
BOLTS OR STUDS TYPE	Hex Hd Bolts, Hvy Pattern
BOLTS OR STUDS MATERIAL	ASME SA-193, GR B7
NUTS TYPE	Hex, Hvy Pattern
NUTS MATERIAL	ASME SA-194, GR 2 OR 2H
INSULATION	(BY OTHERS) 2" THK.
NO UNITS REQ'D.	ONE (1)
MISCEL.	ALL GASKET SURFACES TO HAVE 125 RMS FINISH OR SMOOTHER. SKIRT TO HAVE 2" BLAZECRETE ON INSIDE & OUTSIDE

NOZZLE DATA			
NOZZLE	SIZE	USE	SPECIFICATION
A	20"	INLET	SES-4NIJ & ELEV.
B	6"	OUTLET	SES-4NSJ
C	4"	LEVEL	026-2045-53001-1WE
D	3"	OVERFLOW	SES-4NIJ & ELEV.
E	6"	SIGHT GLASS	026-2045-53001-1WE
F	16"	VENT	SES-4NIJ
G	3"	SPRAY ASS'Y	SES-4NIJ

NO.	DATE	JOB NO.	DESCRIPTION	RVS. D.	CK'D.	APP'VD.
			REVISIONS			



REFERENCE DRAWINGS	
6. INSULATION SUPPORTS	5DE-4SIG
5. VENDORS DWG	BPF#
4. UNLINED STUDDING NOZZLES	026 2045 53001 1WE
3. GROUNDING CLIPS	026 2045 53005 1WE
2. PAINT SPECS.	11CS-661
1. FABRICATION SPECS.	SCS-3T1

THIS DWG. IS IDENTICAL TO DWG. 026-2030-52075-4WE (PROJ. 026035)

**B 1768 W**

**HERCULES INCORPORATED**

VENDOR: MICRO FILM NUMBER: PRINT FILE: 43801 DATE: 2/13/73

SCALE: 3/4" = 1'-0"

SHEET: 1

PROJECT & ACCOUNT NOS.: 26057 2047

PURCHASE ORDER NO.: 336-026-57123

PLANT: HANOVER

REVIEWED - DRAFTING DESIGN: RQH-2-473

APPROVED - ENGINEER: H.G. Schuber

DRAWING NUMBER: 026 2047 52005 4WE 0

PLANT ACCOUNT CLASSIFICATION FILE COOL REV

#103522