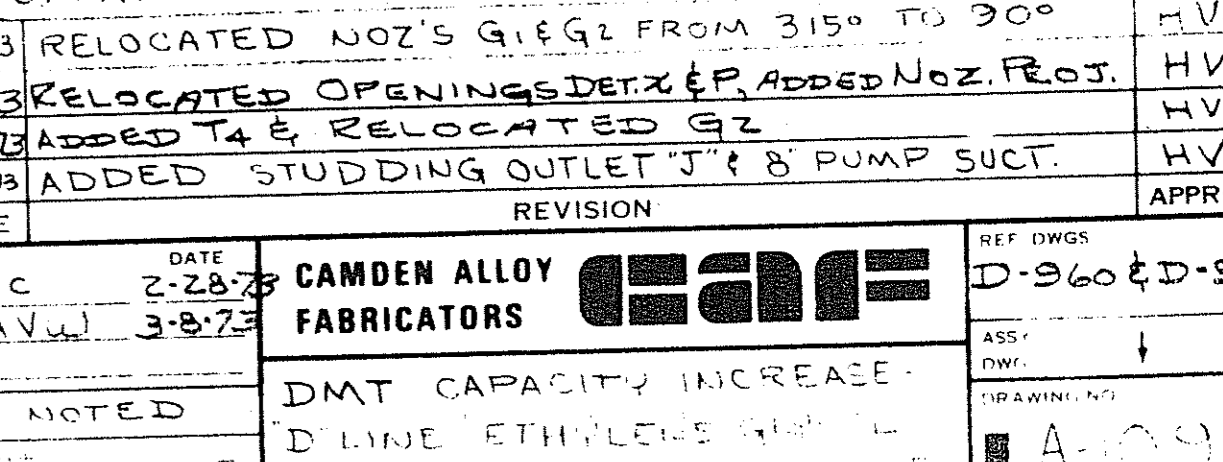
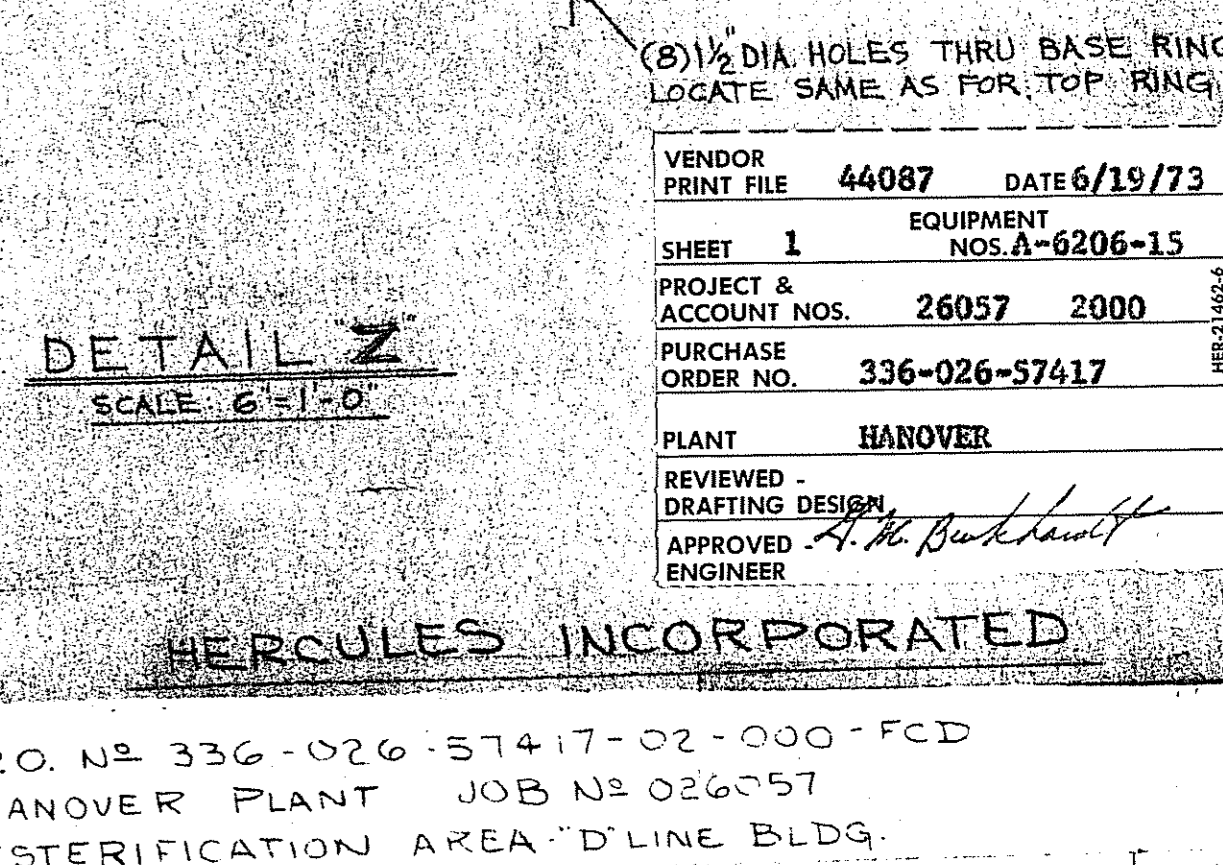
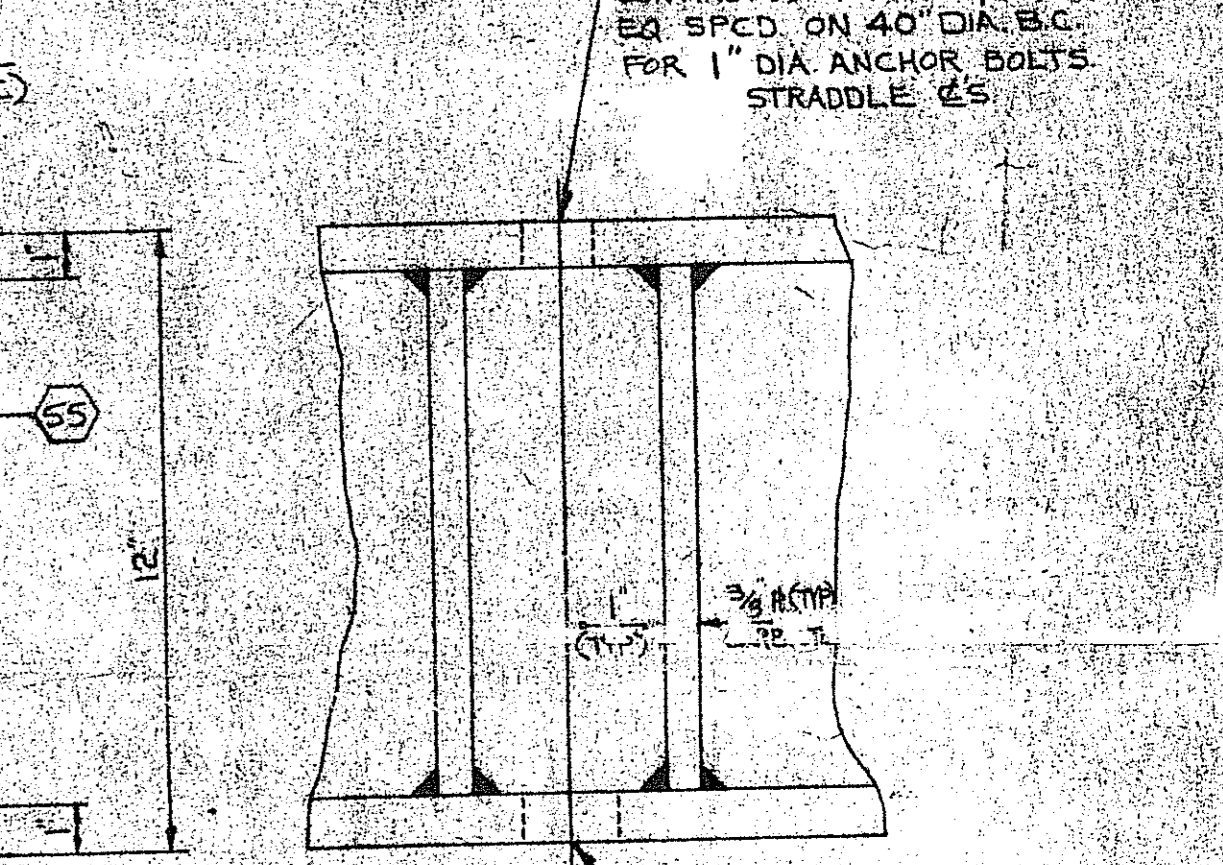
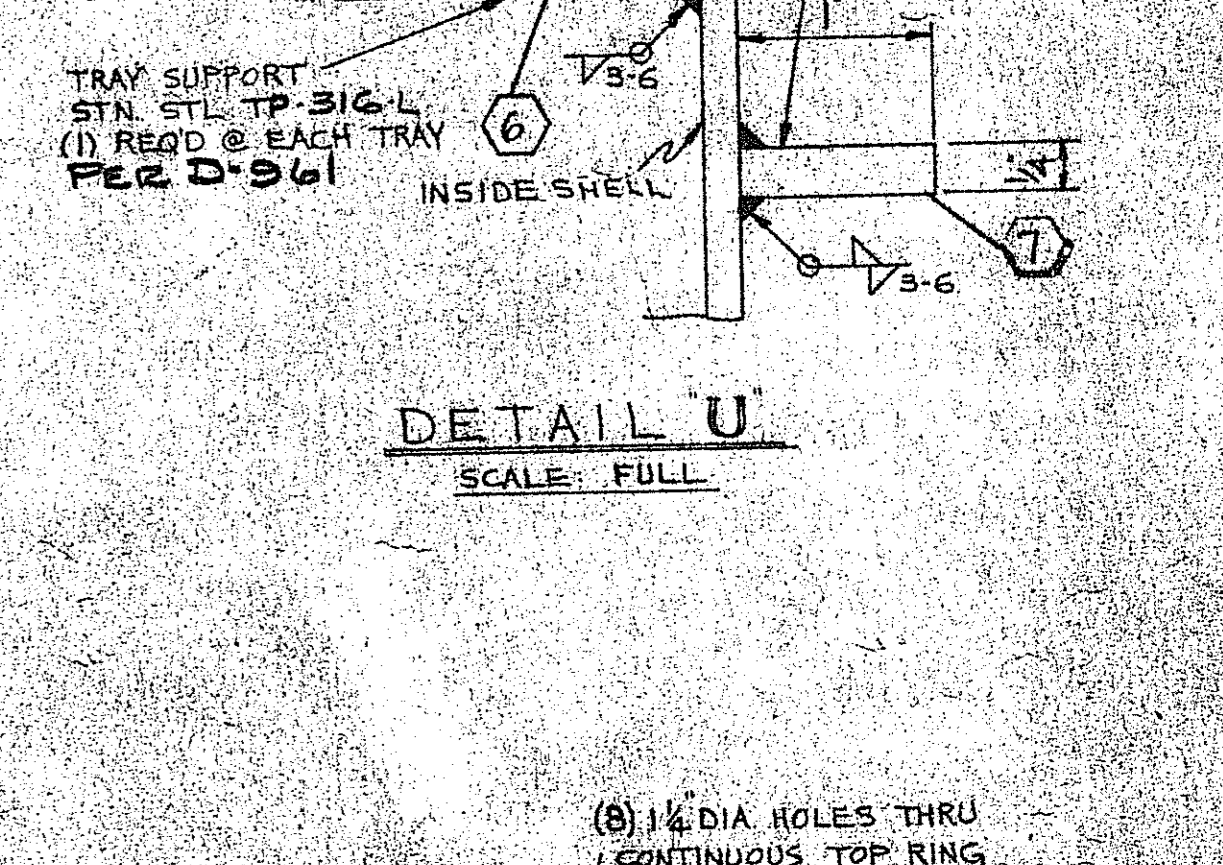
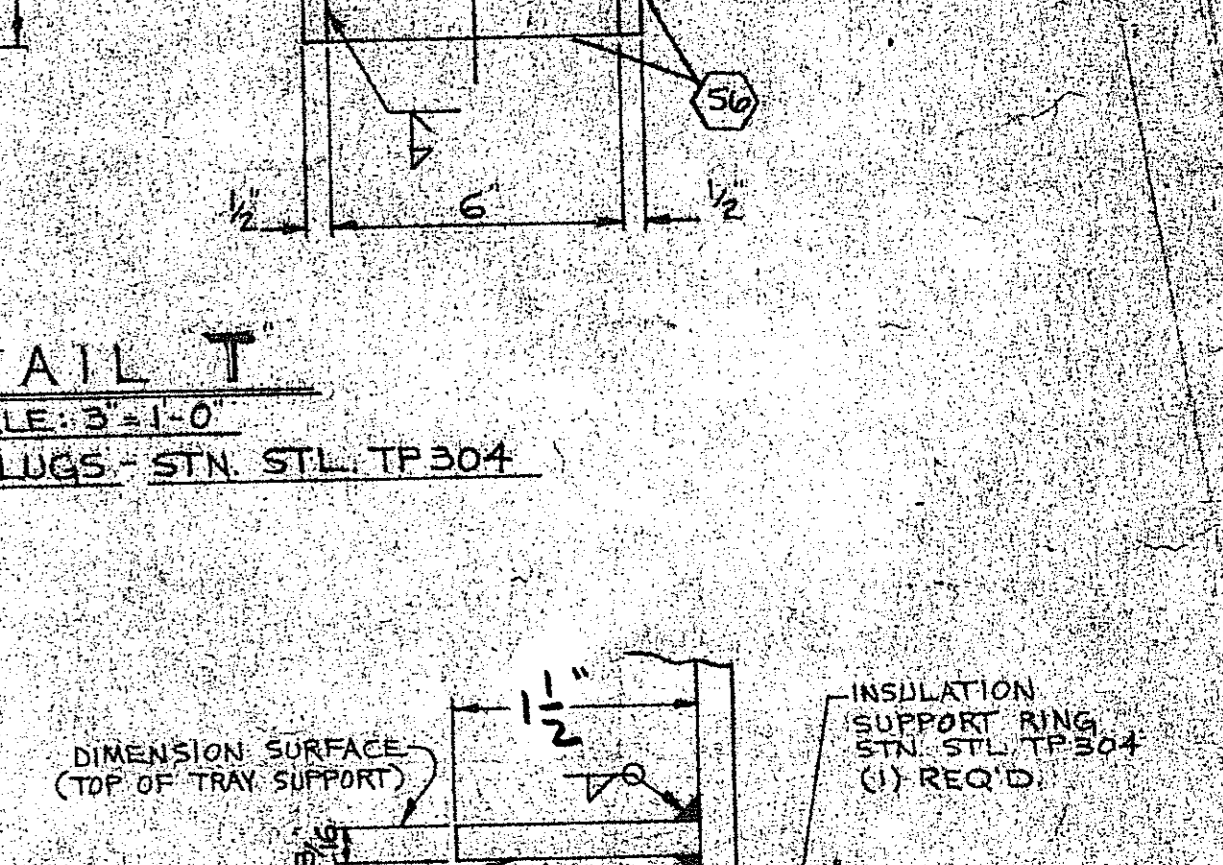
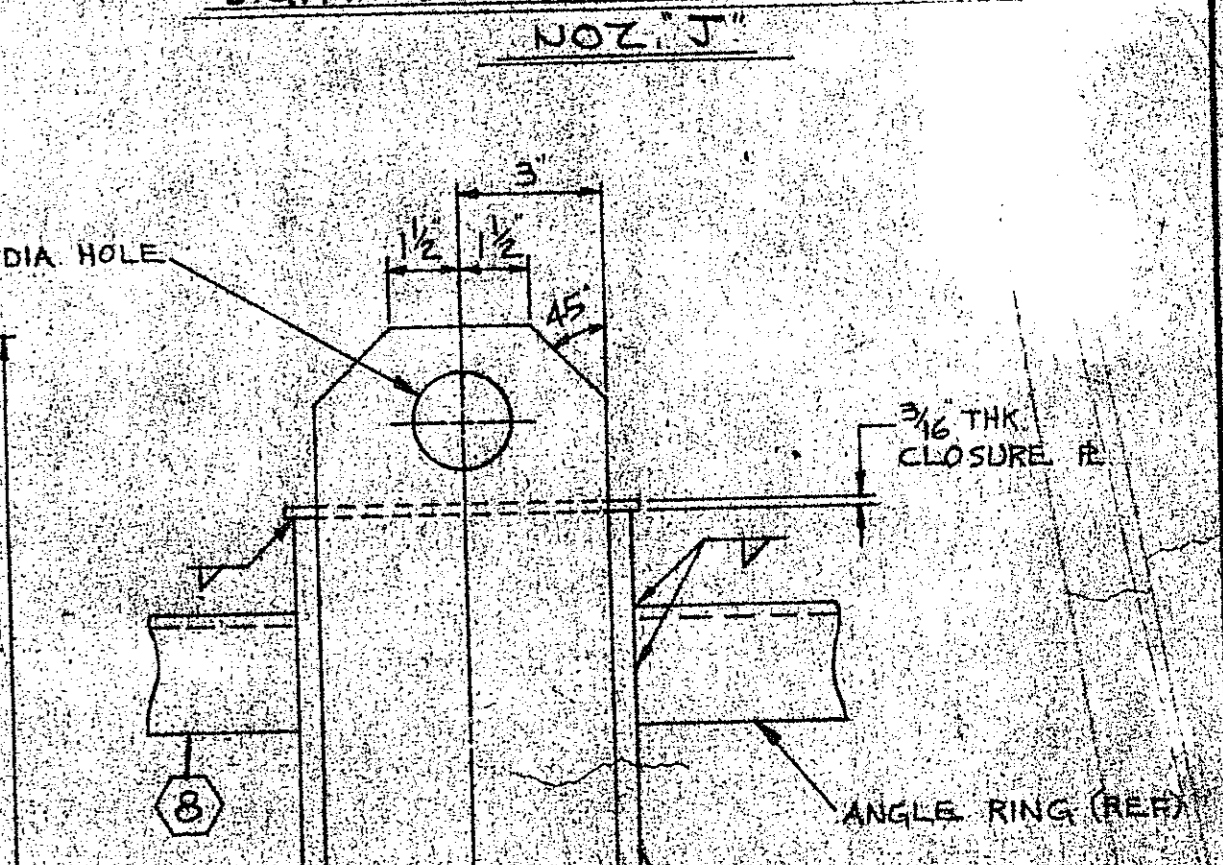
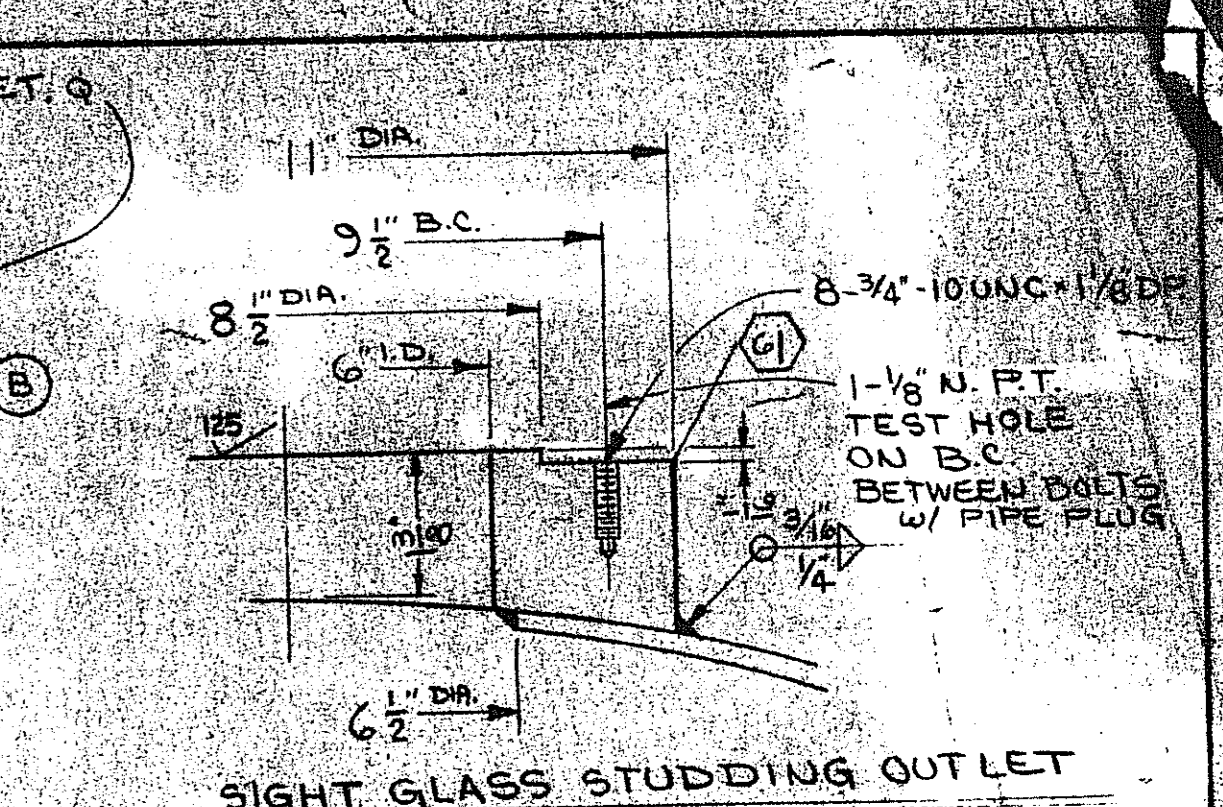
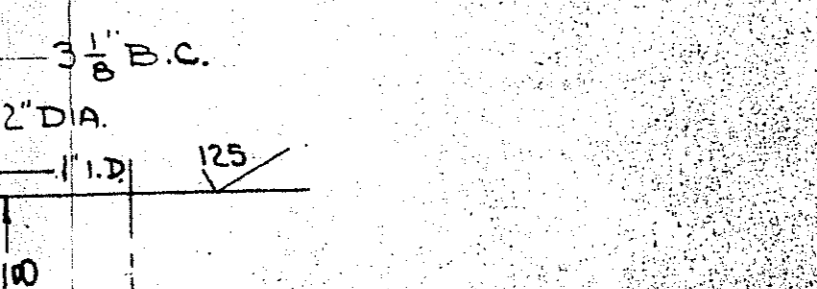
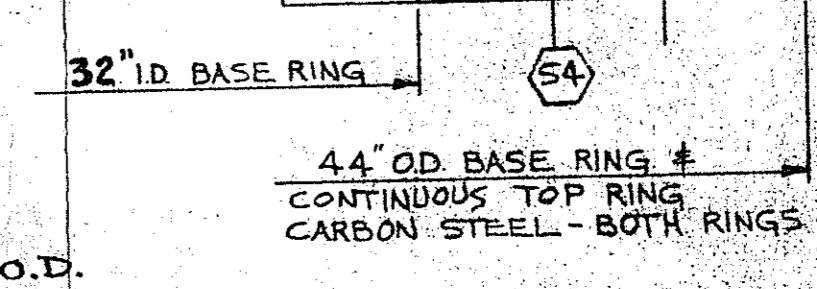
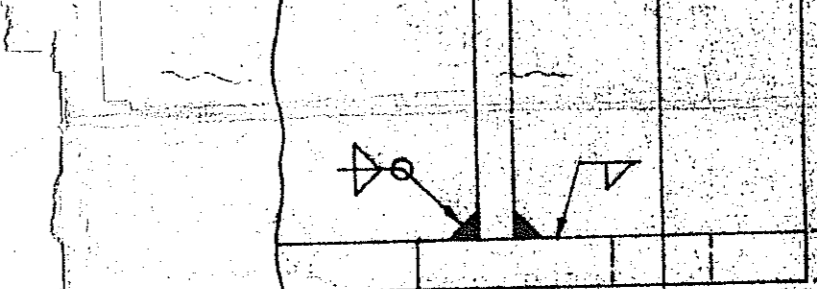
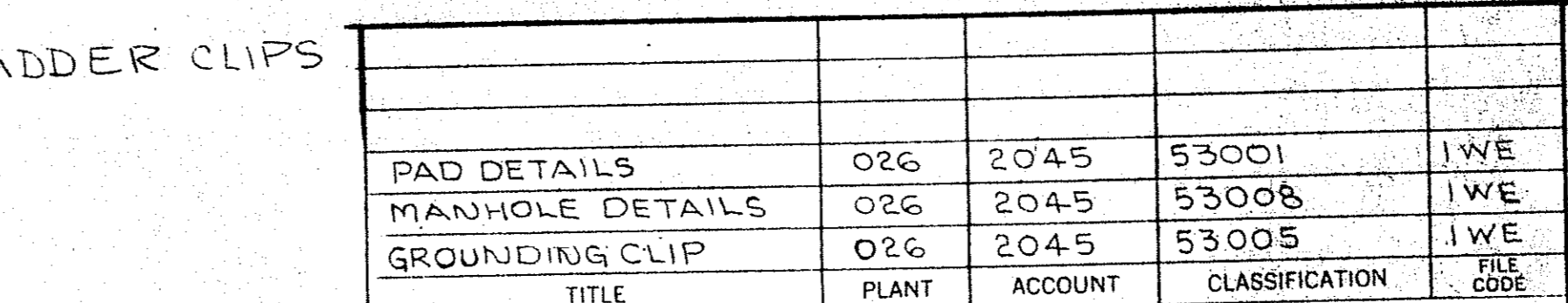
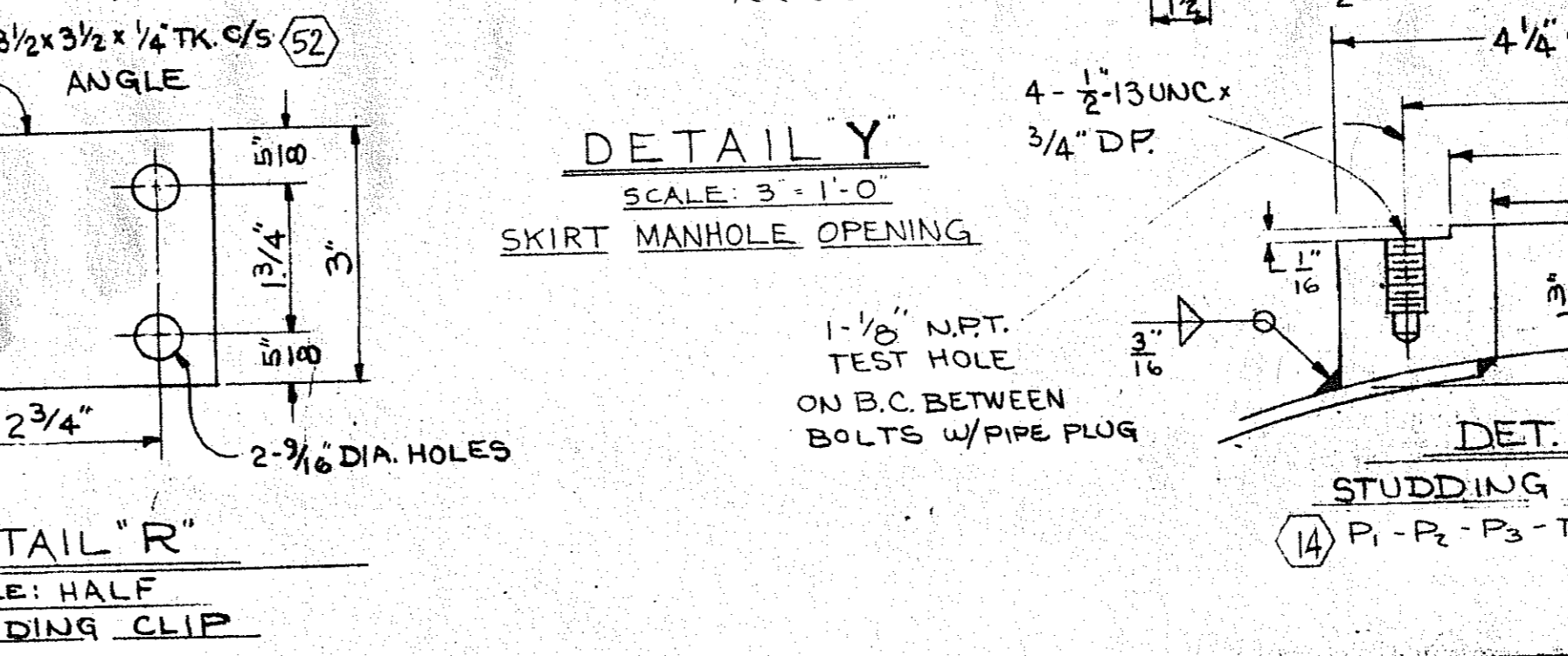
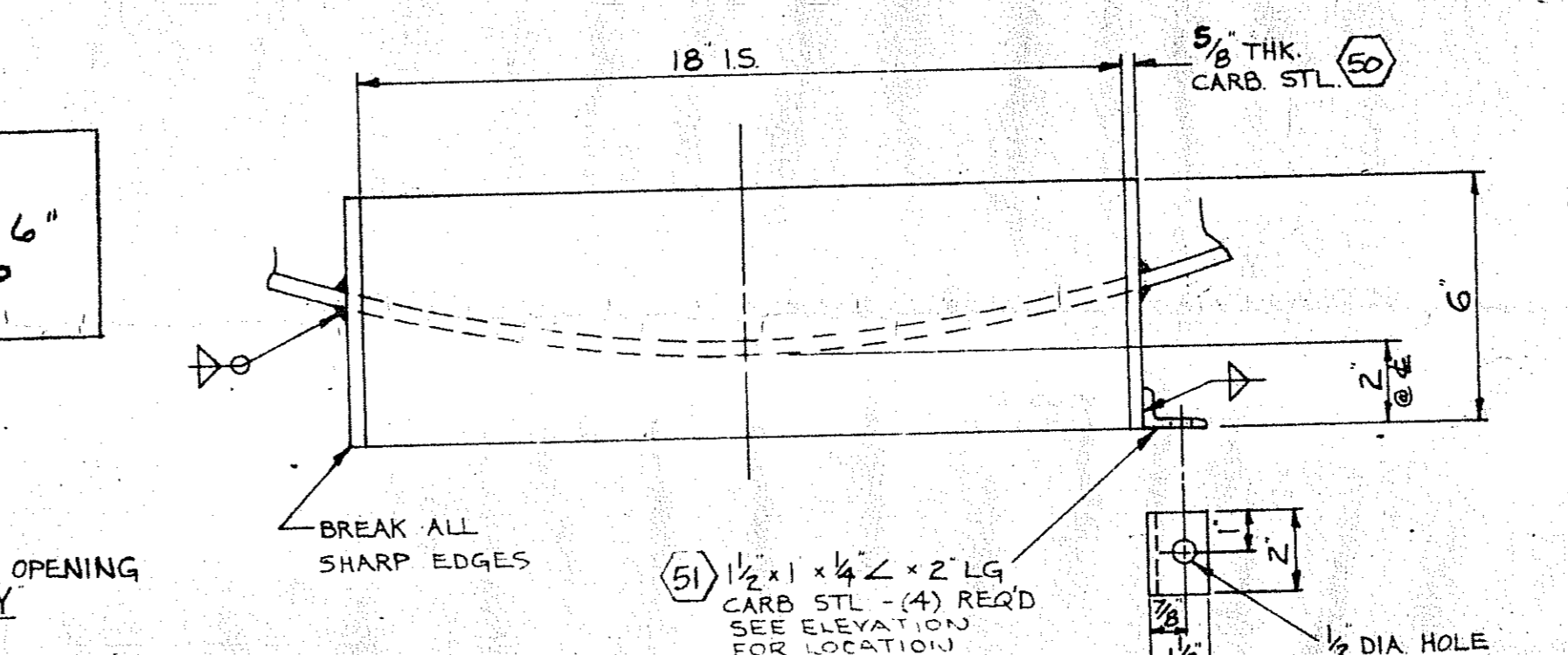
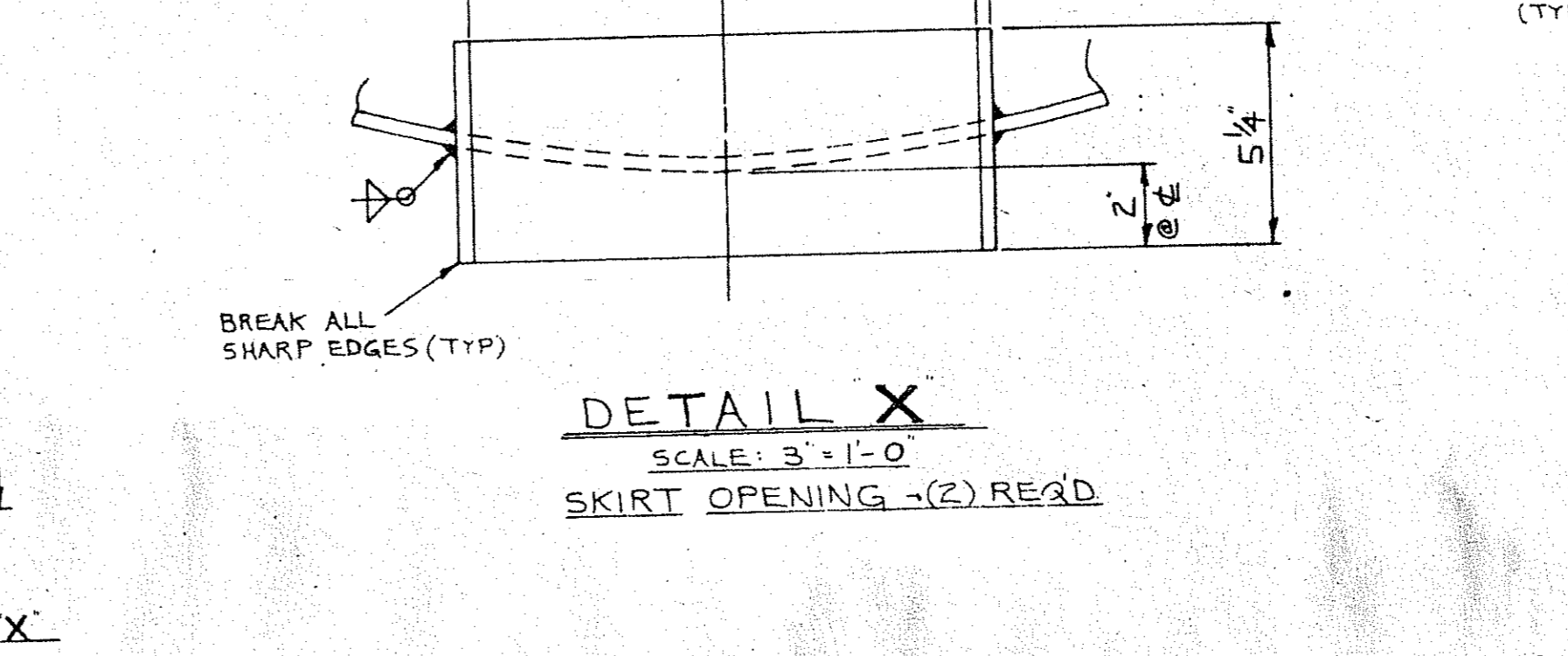
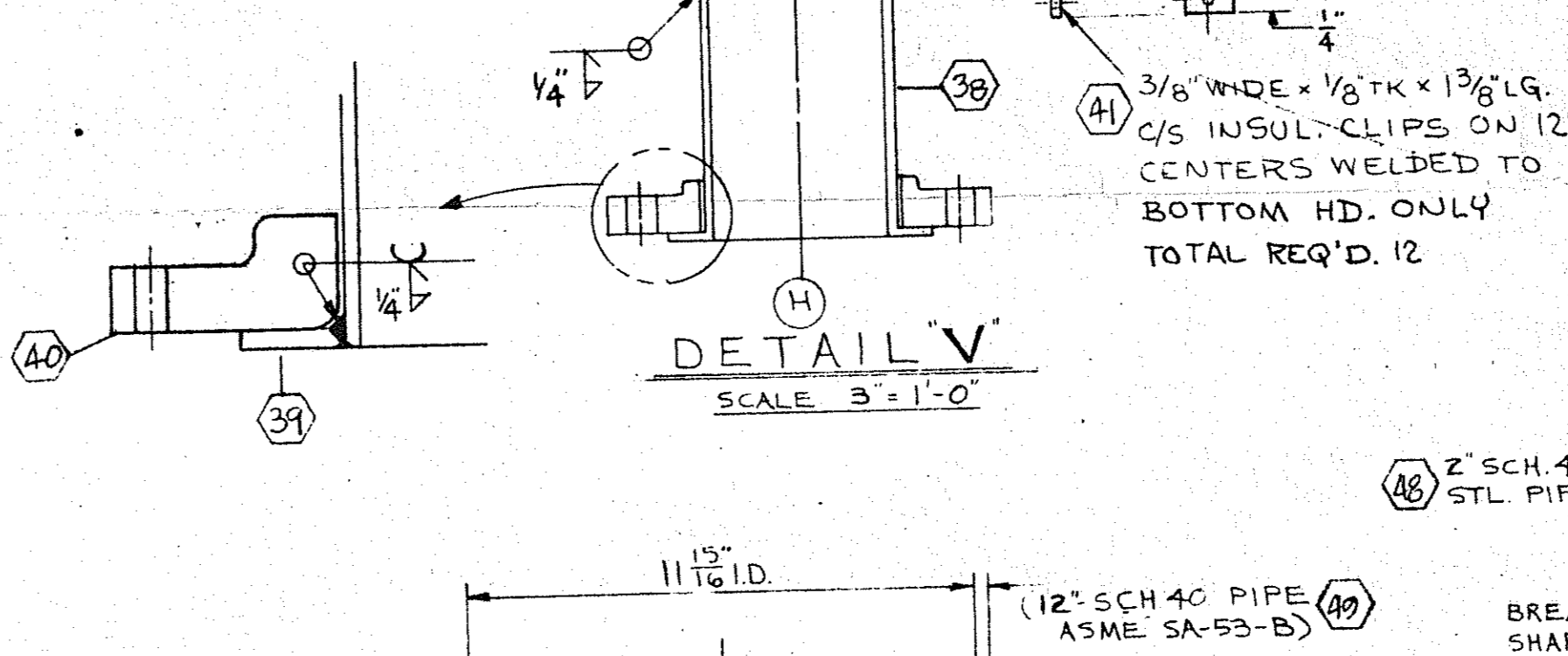
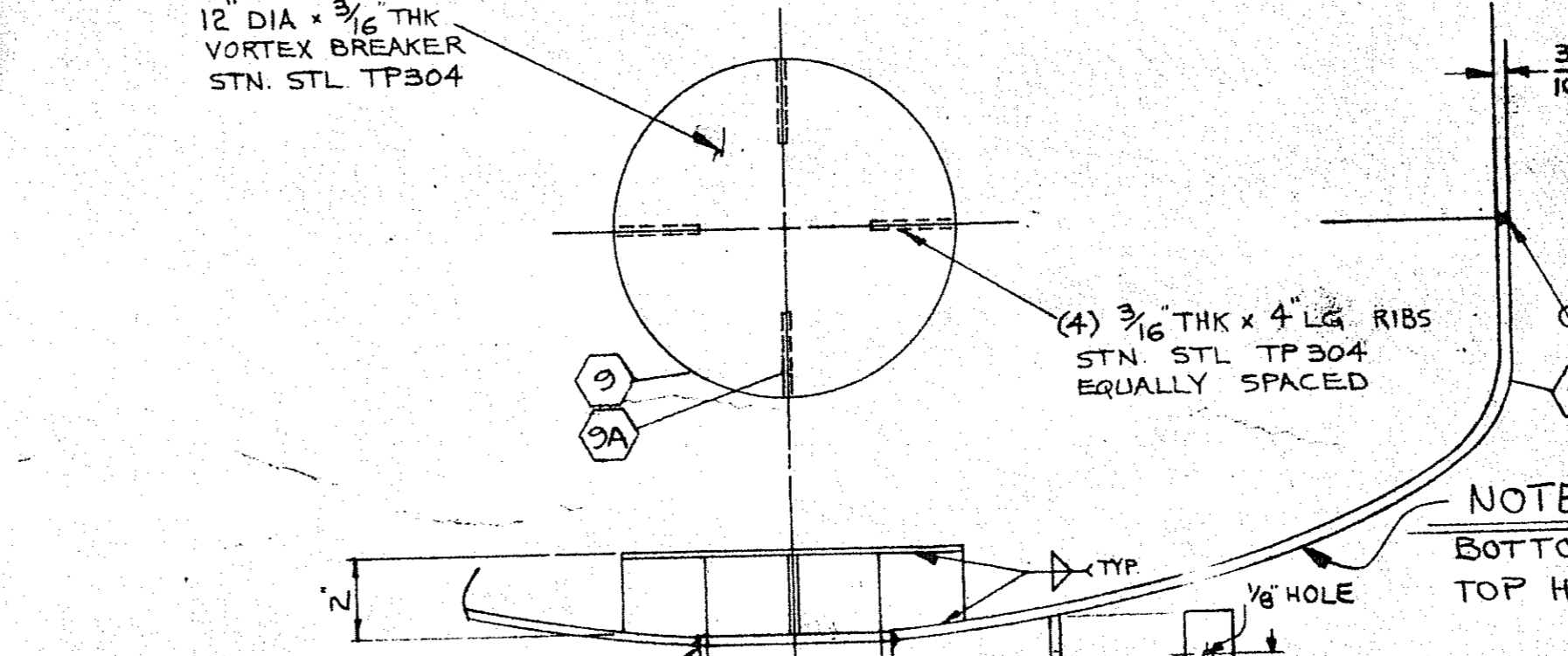
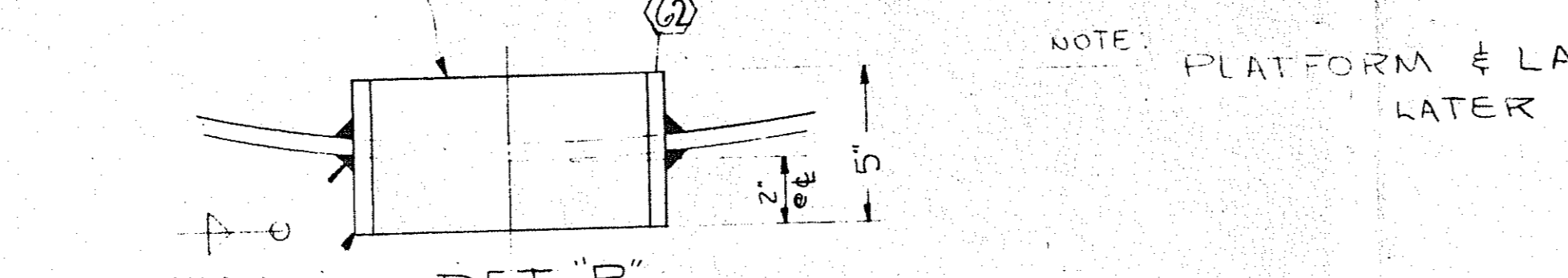
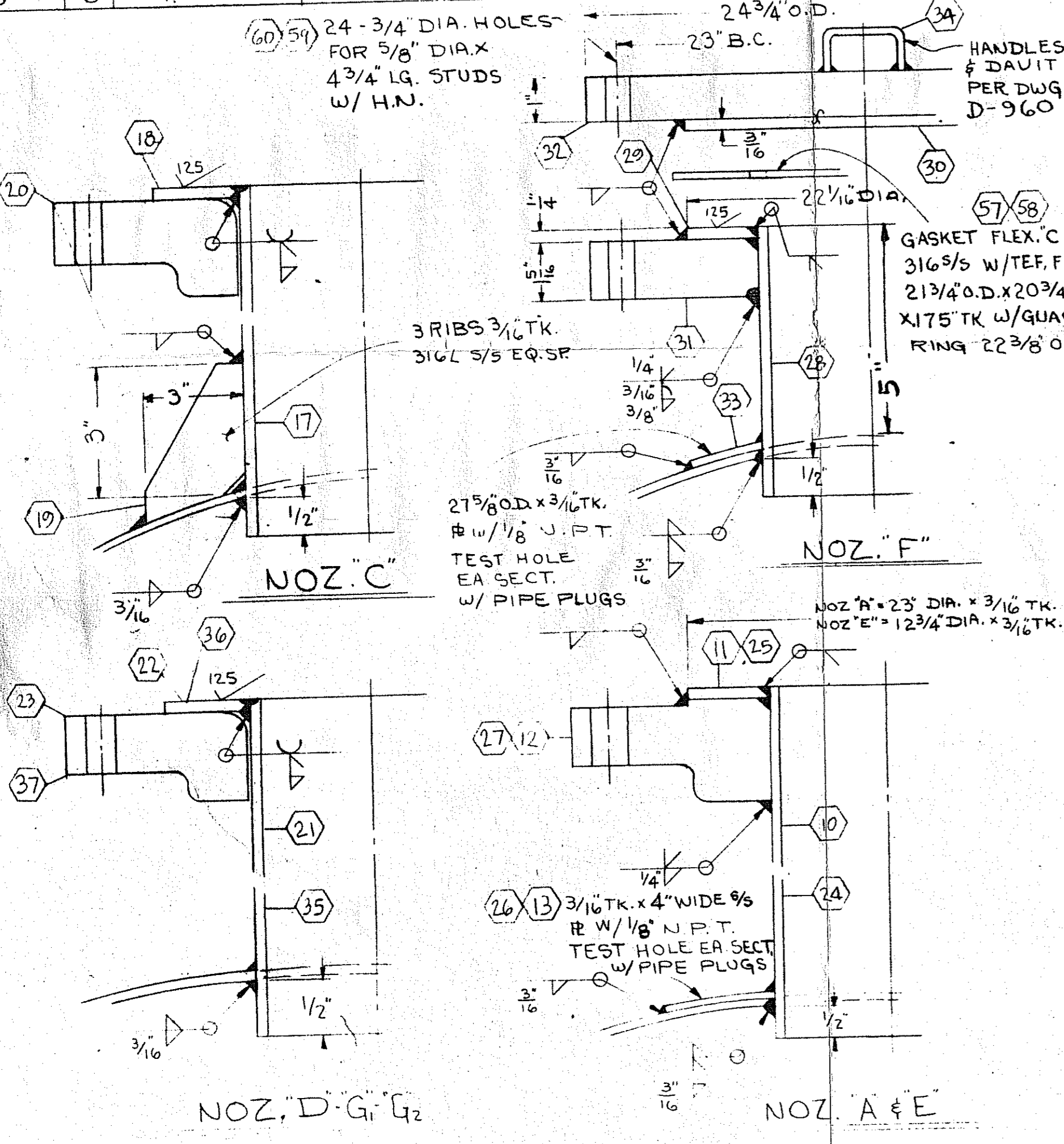
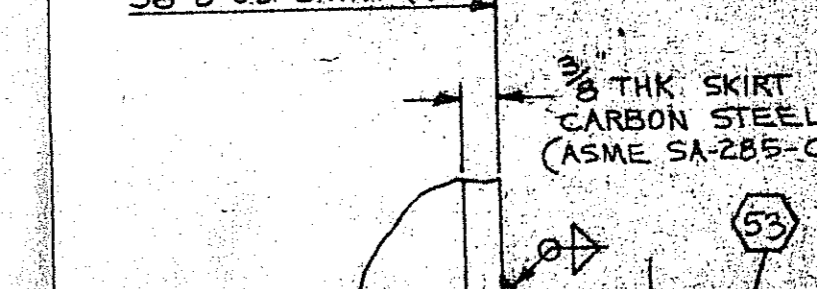
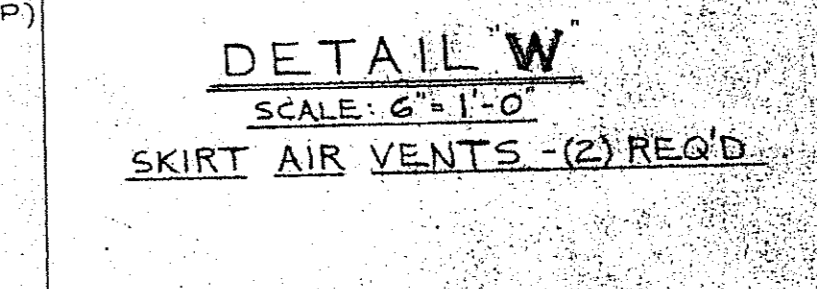
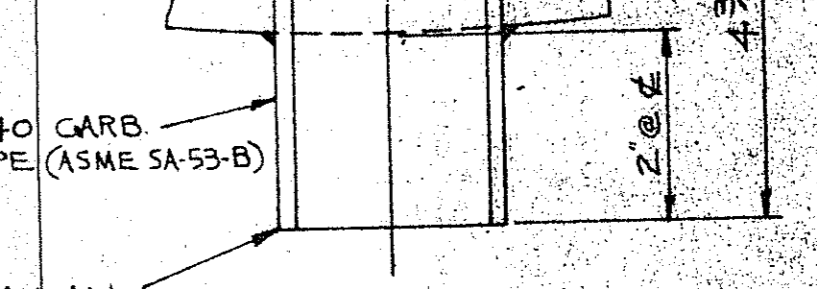
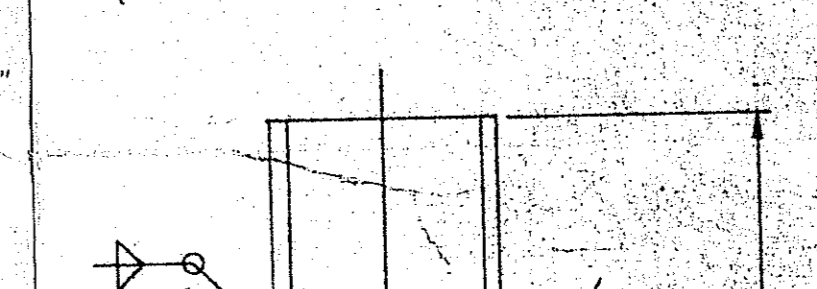
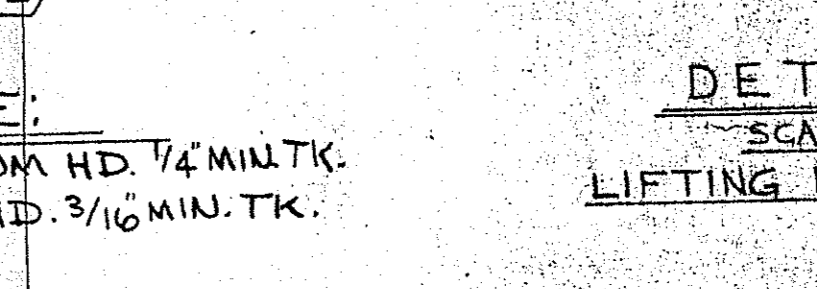
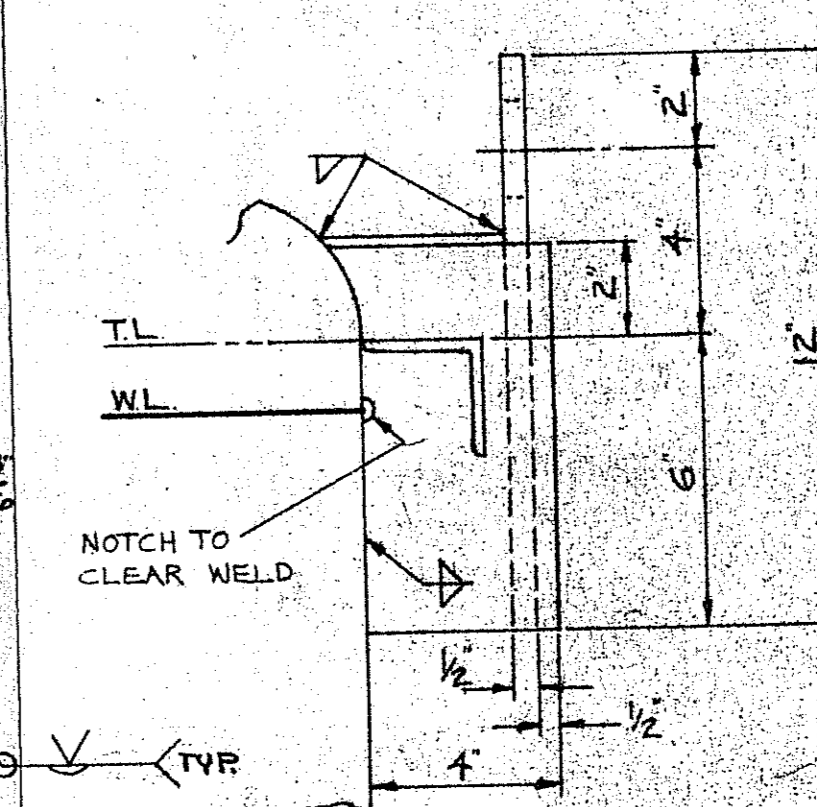
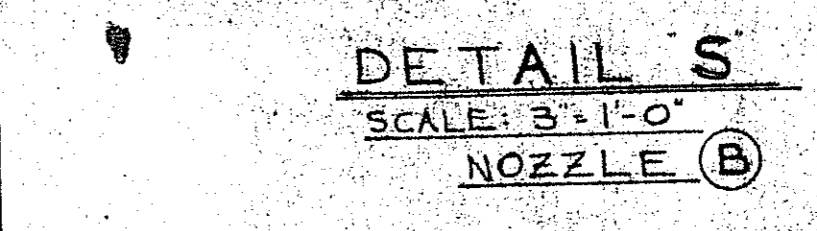
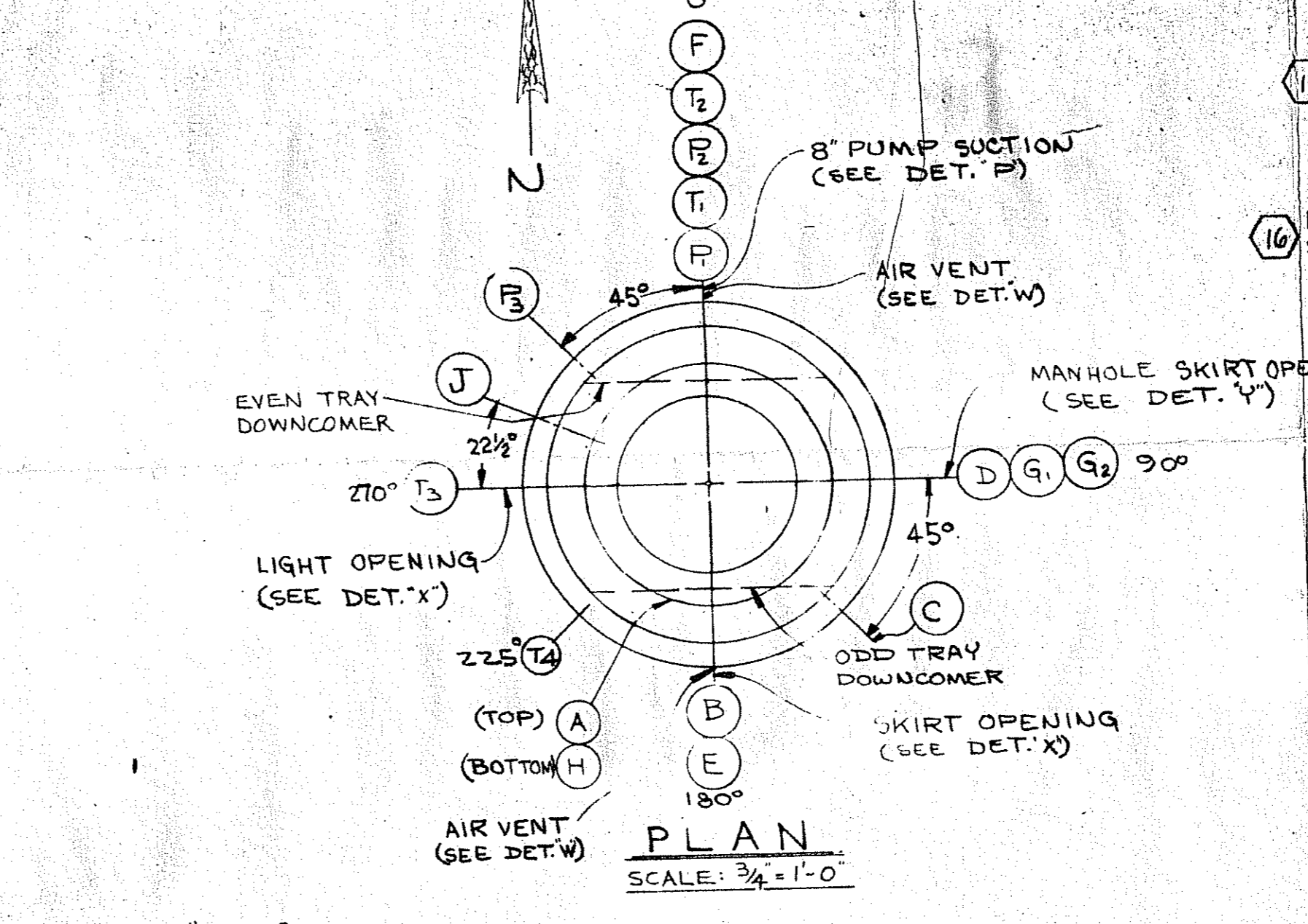
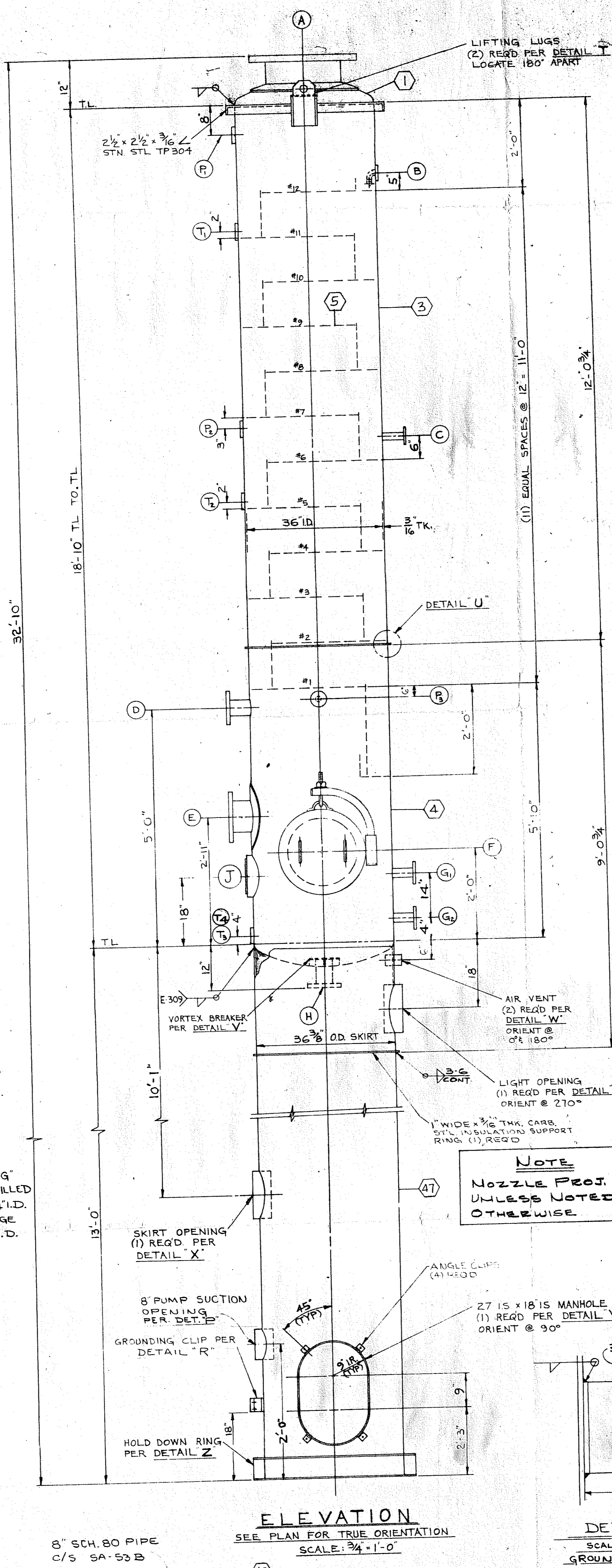


SPECIFICATIONS

CONTENTS		WATER WT. 8.34 LB./GAL.	
CAPACITY OPERATING	GALS. DESIGN	GALS. TOTAL	017 GALS.
AGITATION NONE			
HEATED NO	COOLED NO	COIL NO	OTHER NONE
PRESSURE & TEMPERATURE: SHELL: JACKET OR COIL:			
DESIGN	14 PSIG AT 230 F	PSIG AT	F
OPERATING	PSIG AT	PSIG AT	F
TEST HYDROSTATIC POSITION: 25 PSIG HOLD 2 HOURS PSIG HOLD 2 HOURS			
CORROSION ALLOWANCE NONE			
CONSTRUCTION: CODE MERC STD 5CS-BT1		STAMPING NONE	
INSPECTION: HERCULES YES NATIONAL BOARD NO OTHER VENDOR			
X-RAY INSPECTION: SPOT		FILM INSPECTION: HERCULES YES NATIONAL BOARD NO	
PAINTING APPLY ONE (1) SHOP COAT TO ALL CARBON STEEL PARTS. PER. MERC. STD. ICS-661			
WEIGHTS: EMPTY 4050 LBS		FILLED WITH WATER 12550 LBS	
EXTERNAL LOADING INSULATION, PLATFORM & LADDER		1450 LBS	
FILLED WITH CONTENTS		LBS. TOTAL MAXIMUM LOAD 14000 LBS	
MATERIAL STAINLESS STEEL ASME SA-240 TP316L THICKNESS 3/16			
SEAMS: WELDED ELECTRIC JOINT TYPE DOUBLE BUTT EFFICIENCY			
TOP		BOTTOM	
MATERIAL STN. STL. ASME SA-240 TP316L	STN. STL. ASME SA-240 TP316L		
TYPE ASME F & D	ASME F & D		
THICKNESS 3/16 MIN.	1/4 MIN.		
1/2" S.F.	1/2" S.F.		
MATERIAL STAINLESS STEEL ASME SA-312 TP316L THICKNESS "AS NOTED"			
TYPE LAP JOINT STUB END WITH 150 LB FGD STL LAP JT. AMER. STD. FLGS.			
ALL LAP JOINT STUB ENDS TO BE TYPE "A"			
GASKETS FOR TEST 1/2 THK JM #60			
FOR COMPLETED CONNS. SUPPLY NEW FLEXITALLIC STYLE "CG" STN STL TP316-TFE FILLED			
JACKETS MATERIAL THICKNESS			
COILS MATERIAL DIAMETER THICKNESS			
LIN. FT. SQ. FT. SURFACE			
INTERIOR		EXTERIOR	
BOLTS OR STUDS: TYPE 5CS-BT1	HEX HD. - HVY. PATT.		
BOLTS OR STUDS: MATERIAL	ASME SA-193 GR B7 (GALV)		
NUTS: TYPE	HEX - HVY PATT.		
NUTS: MATERIAL	ASME SA-194 GR 2 OR 2H (GALV)		
INSULATION BY OTHERS 1/2 THK			
NO UNITS REQ'D. ONE (1)			
ALL GASKET SURFACES TO HAVE 125 RMS FINISH.			
SKIRT TO HAVE 2" THK BLAZECRETE APPLIED TO INSIDE & OUTSIDE SURFACES (BY OTHERS)			

NOZZLE DATA

NOZZLE	SIZE	USE	REMARKS	FLG. MATL.	TYM RATE	NOZ. NECK TK. & MATL.
A	20"	VAPOR OUTLET		FG. ST.	50 ISO#	1/4" TK. 316L S/S
B	1"	REFLUX	DETAIL S	PAD		
C	1"	FEED		FG. ST.	L.J.	SCH. 40 316L S/S
D	3"	PRESSURE RELIEF		L.J.		SCH. 40 316L S/S
E	10"	REBOILER RETURN		FG. ST.	9.0	3/16 TK. 316L S/S
* F	20"	MANHOLE	DAVIT PER DWG. D-960	C/S	SO#	3/16 TK. 316L S/S
G _{1, G₂}	2"	LEVEL GAGE		L.J.	150#	SCH. 40 316L S/S
H	4"	REBOILER FEED				SCH. 40 316L S/S
P, P _{1, P₂}	1"	PRESS. SENSORS		PAD		316L S/S
T _{1, T_{2, T_{3, T₄}}}	1"	TEMP SENSORS				316L S/S
J	6"	SIGHT GLASS				316L S/S



VENDOR PRINT FILE	44087	DATE	6/19/73
SHEET	1	EQUIPMENT	NOS. A-6206-15
PROJECT & ACCOUNT NOS.	26057 2000	PURCHASE ORDER NO.	336-026-57417
PLANT	HANOVER	REVIEWED - DRAFTING DESIGN	APPROVED

P.O. NO. 336-026-57417-02-000-FED			
HANOVER PLANT JOB NO. 026057			
VERIFICATION AREA 'D' LINE BLDG.			
4	6-73	RELOCATED NOZ'S G. & E. FROM 315" TO 300"	H.V.W.
3	4-173	RELOCATED OPENINGS DET. & F. ADDED NOZ. REOS.	H.V.W.
2	3-23	ADDED T & E RELOCATED J	H.V.W.
1	3-23	ADDED STUDDING OUTLET J & 8 PUMP SUCT.	H.V.W.
NO. DATE	REVISION	FILE NO.	APPROVED
DRAWN	DATE	CAMDEN ALLOY	FILE NO.
3-23-73	3-23-73	FABRICATORS	D-360 & D-361
DATE AS NOTED	DMT CAPACITY INCREASE	ASS. ENG.	
PREPARED BY	D LINE ETHYLENE UNIT	DATE	
ENGINEER	RECOVERING		

TITLE	PLANT	ACCOUNT	CLASSIFICATION	FILE CODE
PAD DETAILS	026	2045	53001	IWE
MANHOLE DETAILS	026	2045	53008	IWE
GROUNDING CLIP	026	2045	53005	IWE

THIS PRINT AND THE INFORMATION AND KNOWLEDGE THEREON IS PROPRIETARY TO HERCULES AND MAY NOT BE USED OR REPRODUCED OR DISCLOSED TO OTHERS WITHOUT THE WRITTEN PERMISSION OF THIS COMPANY. PERMITTED REPRODUCTIONS IN WHOLE OR IN PART, INCLUDING SHOP DRAWINGS, SHALL BEAR OR REFER TO THIS NOTICE. RETURN OF THIS PRINT MUST BE MADE TO HERCULES UPON REQUEST.

HERCULES INCORPORATED