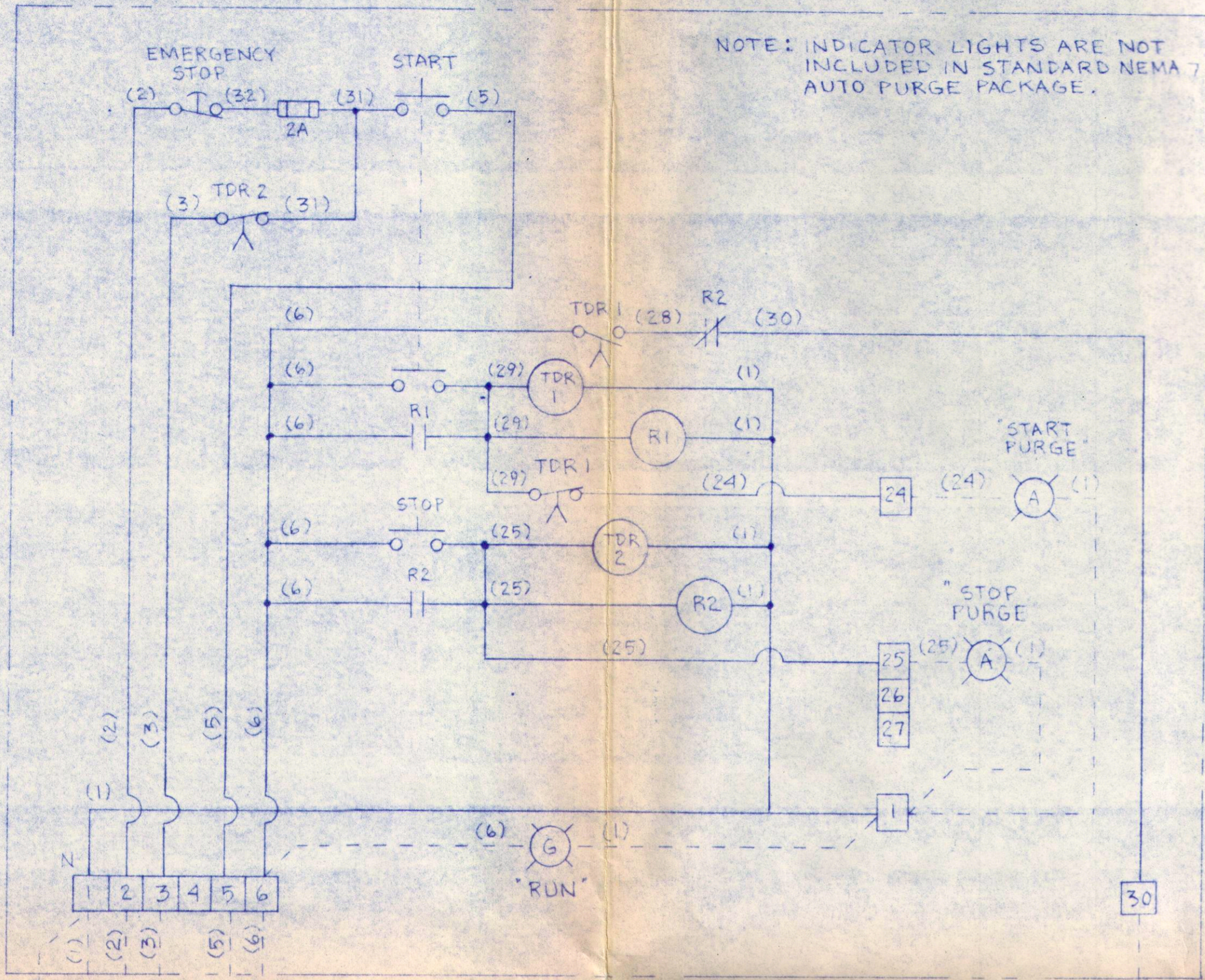
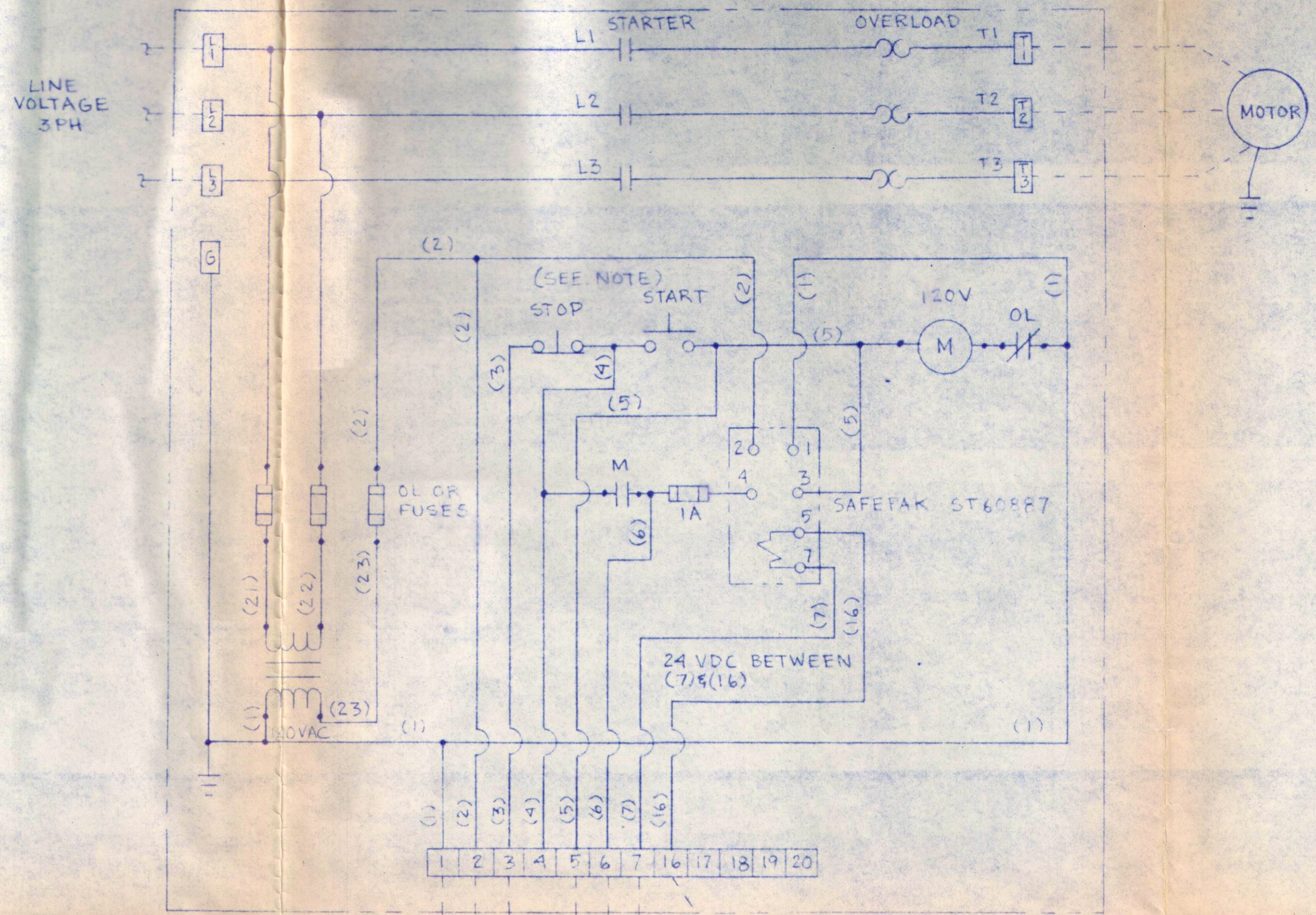


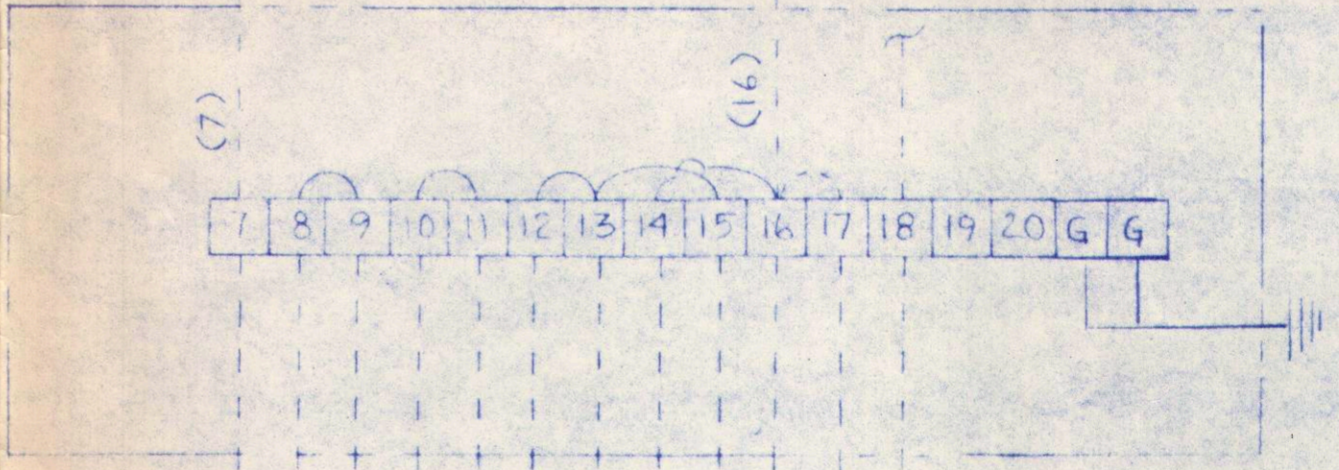
AUTO PURGE CONTROLLER (NEMA 7, DWG. NO. 01397)



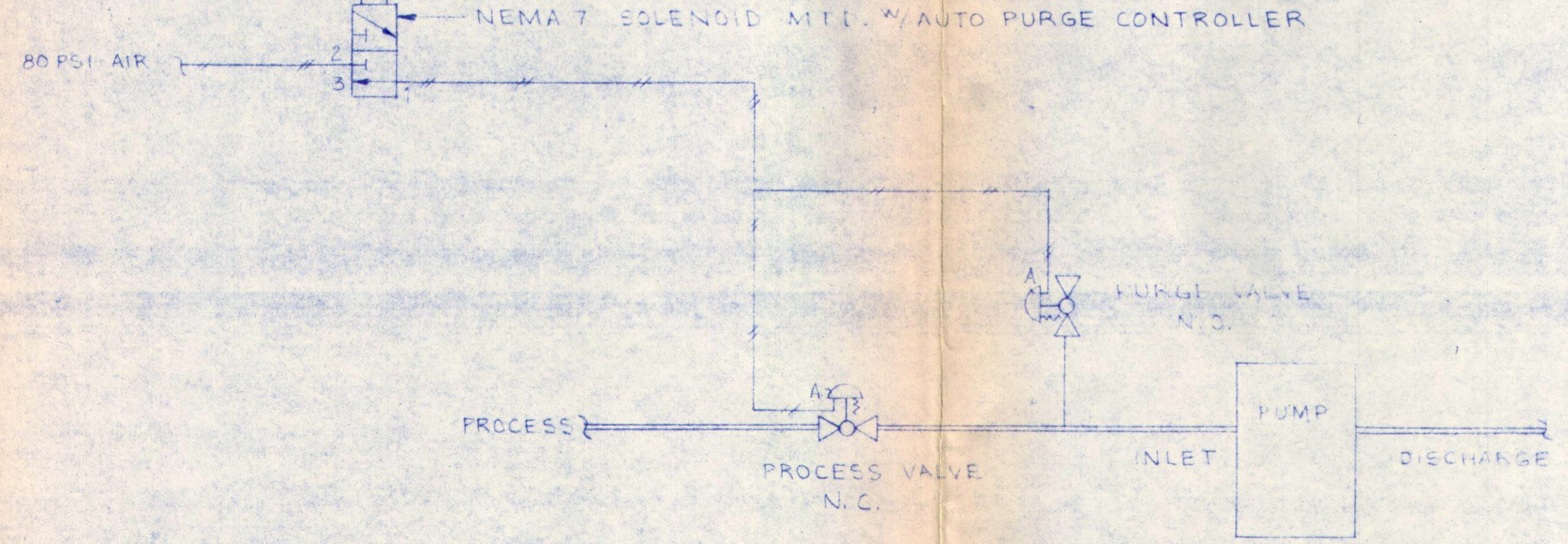
BUSCH HICKEPACK STARTER (DWG. NO. A1603)



NEMA 7 JUNCTION BOX MTD. AT PUMP (DWG. NO. A1688)



NOTE: THIS DRAWING IS AN INSTALLATION DRAWING. SOME UNITS MAY BE SUPPLIED BY THE CUSTOMER.
 START & STOP PUSHBUTTONS ARE EXISTING ON BUSCH STANDARD STARTER. PUSHING START BUTTON ON STARTER BOX WILL ALLOW PUMP TO RUN WITHOUT CONNECTING TO PROCESS.



- SW1 WATER LEVEL SWITCH
- SW2 OIL LEVEL SWITCH
- SW3 EXHAUST TEMP. SWITCH
- SW4 INTERSTAGE PRESS. SWITCH
- SW5 INLET PRESS. SWITCH
- SW6 KOF LEVEL (OR OTHER SAFETY SWITCH). IF USED, WIRE 16 SHOULD BE CONNECTED TO TERMINAL 18 AND A JUMPER INSTALLED BETWEEN TERMINALS 16 & 17.

*SW4 & SW5 ARE VACUUM SWITCHES AND OPERATE IN REVERSE OF NORMAL PRESSURE SWITCHES

HBOA

THIS DRAWING IS FOR PUMPS WITH INLET PRESSURE SWITCH

BUSCH Busch, Inc.	
SCALE: NONE	APPROVED BY: <i>K. J. [Signature]</i>
DATE: 4-21-86	DRAWN BY: S. BAEOR
WIRING DIAG/AUTO PURGE SYSTEM	
B 052 3-3-87	DRAWING NUMBER: D1574B
REV ECO NO. DATE	NEMA 7 SEP 2 6 1988