

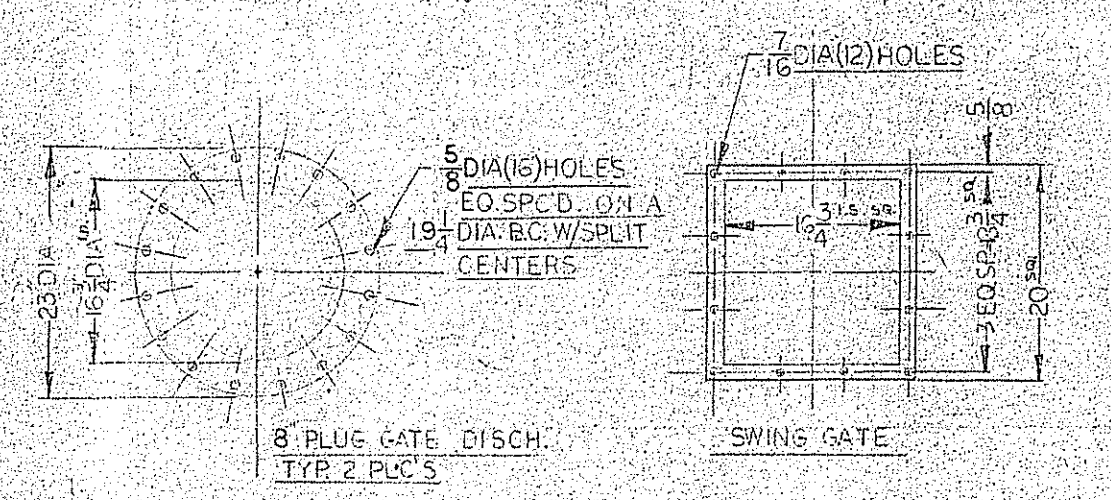
REC'D. ENGR. DEPT.
OCT 10 1969
FOR FINAL DISTRIBUTION

ENGINEERING DATA
FILE COPY

6th floor Blender
TAG - SPEC NO. PC-712-63-34-2002

CERTIFIED DRAWING
EQUIPMENT MANUFACTURED AS SHOWN
THE STRONG-SCOTT MFG. CO.
DATE SEP. 30 1969 PER QUALITY ASSURANCE
RICHARD N. HULTBERG
RHL

34-1002, 2002, 3002



REV.	DATE	BY	SCALE	NEXT ASSY	ORIGINAL
A			1:10		
B					
C					
D					
E					
F					
G					
H					
I					
J					
K					
L					
M					
N					
O					
P					
Q					
R					
S					
T					
U					
V					
W					
X					
Y					
Z					

COMMON PARTS USED ON:

DIST. M.T. REV. CHANGED FROM BY DATE

DR. C. CLARK

CH. 9/28/69

APR 23 1969

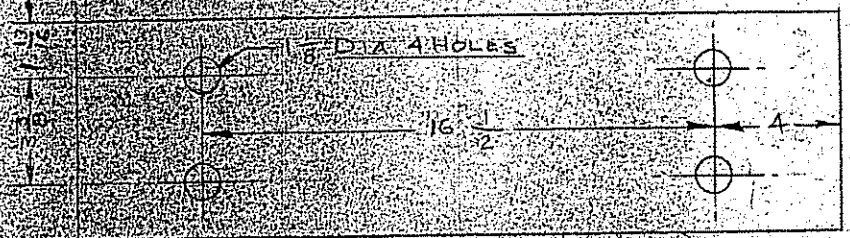
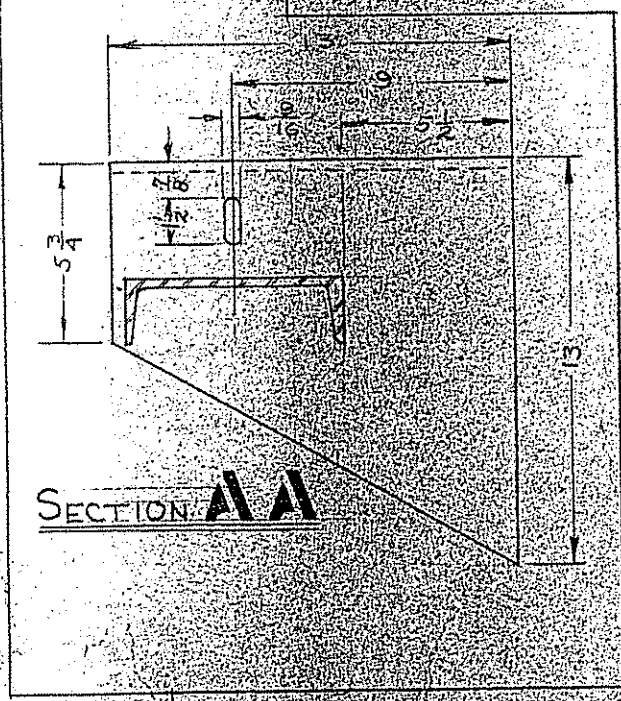
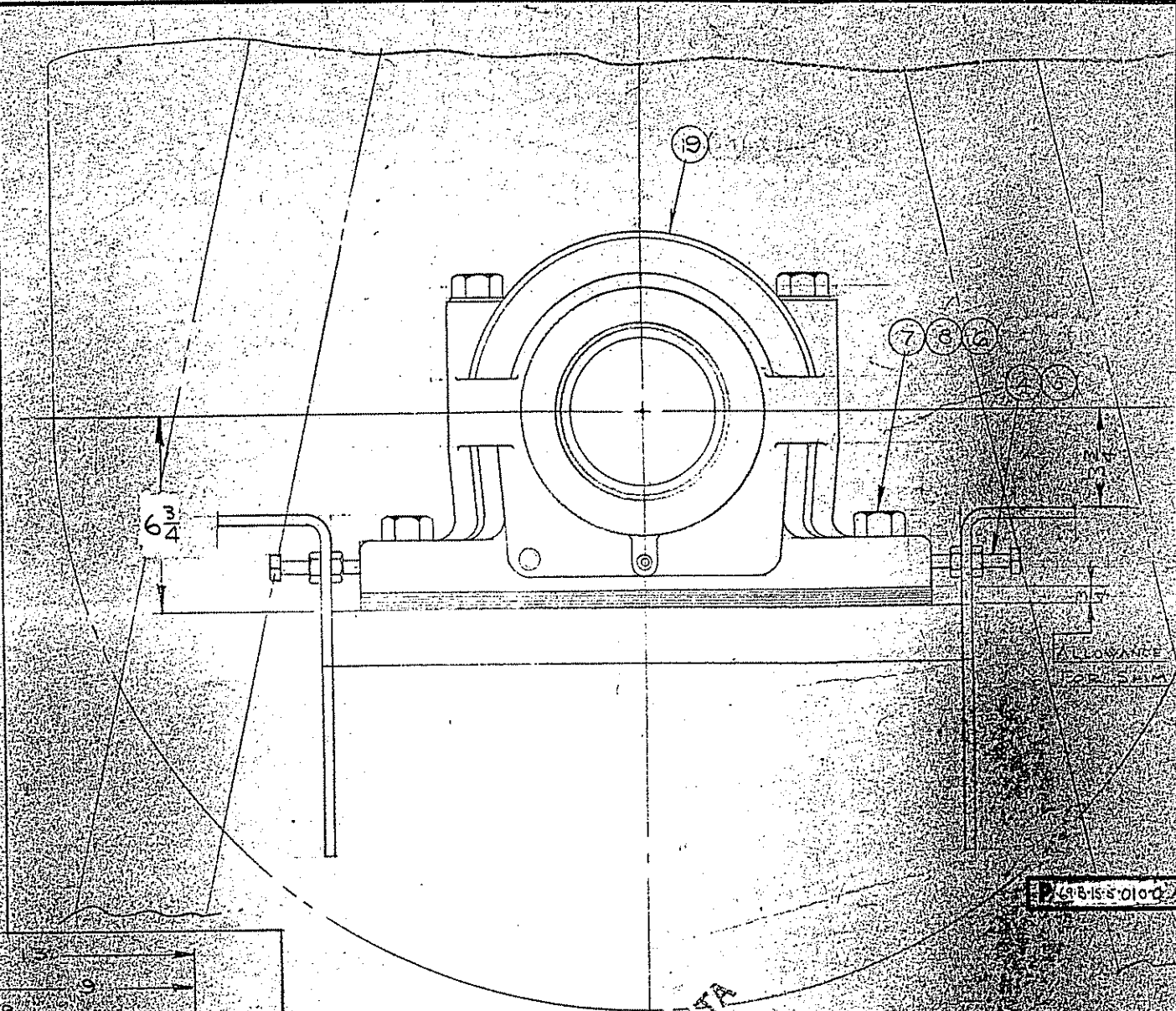
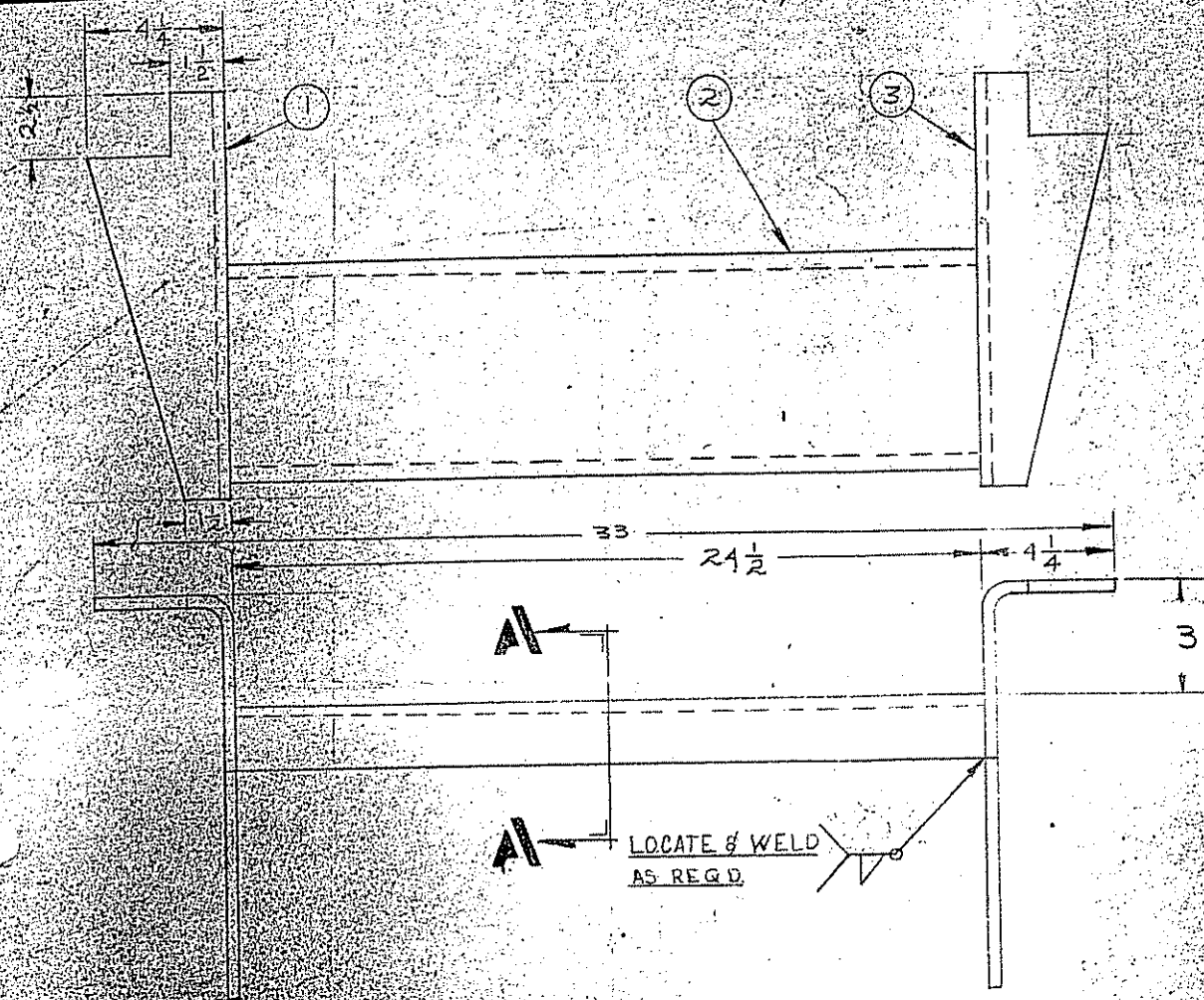
THE STRONG-SCOTT MFG. CO.
MINNEAPOLIS MINNESOTA

TMXS-III RIBBON BLENDER

DO NOT SCALE DRAWING TOLERANCES EXCEPT AS SPECIFIED DIMS. IN FIGS. IN IN. AND 1/16"

THIS DRAWING AND THE DESIGN SHOWN THEREIN IS THE PROPERTY OF THE STRONG-SCOTT MFG. CO. ANY DUPLICATION OR USE OF THIS PRINT FOR PURPOSES OTHER THAN THAT FOR WHICH IT WAS FURNISHED IS HEAVILY PROHIBITED.

T-69-B-25-0-000-0



ENGINEERING DATA
FILE COPY

PC-7121-63-34-2002

301-
1002, 2002, 3002

CERTIFIED DRAWING
EQUIPMENT MANUFACTURED AS SHOWN
THE STRONG-SCOTT MFG. CO.
DATE: SEP. 30, 1969 PER: QUALITY ASSURANCE
RICHARD N. HULTBERG

TEL: 612-260-6000
7-69-B-25-0-000-0
COMMON PARTS USED ON
DISTRIBUTION M.T.S. REV. CHANGED FROM BY DATE

THE STRONG-SCOTT MFG. CO.			
MINNEAPOLIS 19, MINN.			
NAME: DRIVE BEARING ASSEMBLY			
DATE	REV. NO.	BY	APPROVED
		R. C. CLARK	
SCALE: 3/8" = 1"			
P-69-B-15-5-010-0			

REF
P03-51318

NO SCALE DRAWING
TOLERANCES EXCEPT AS SPEC'D
DEC. 2008