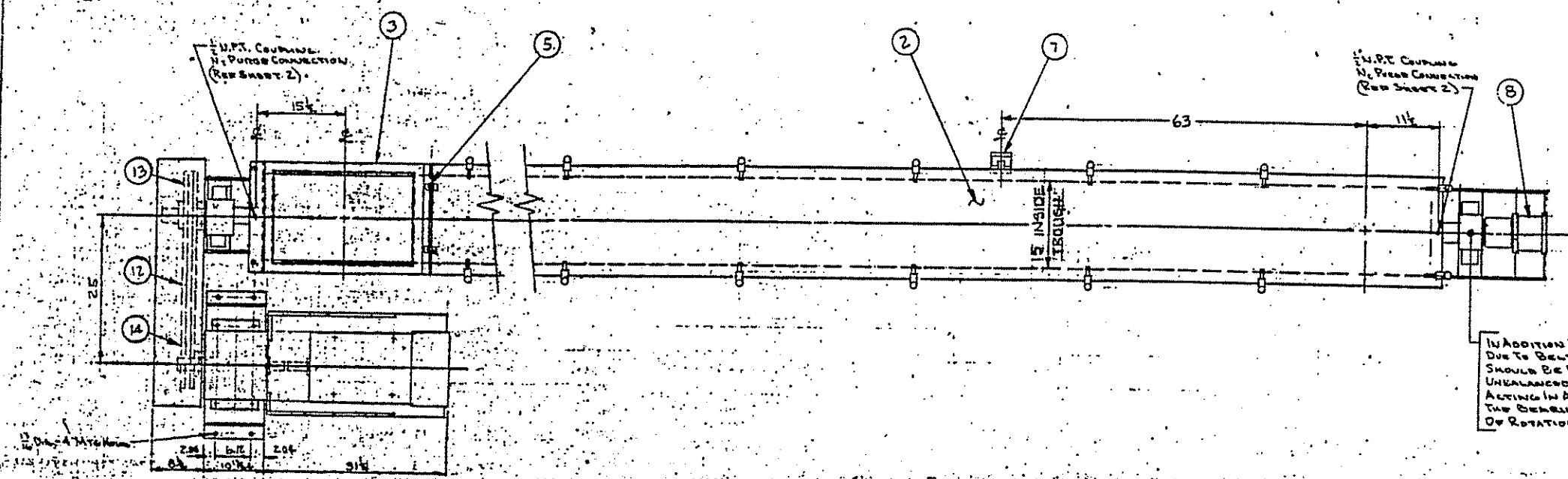
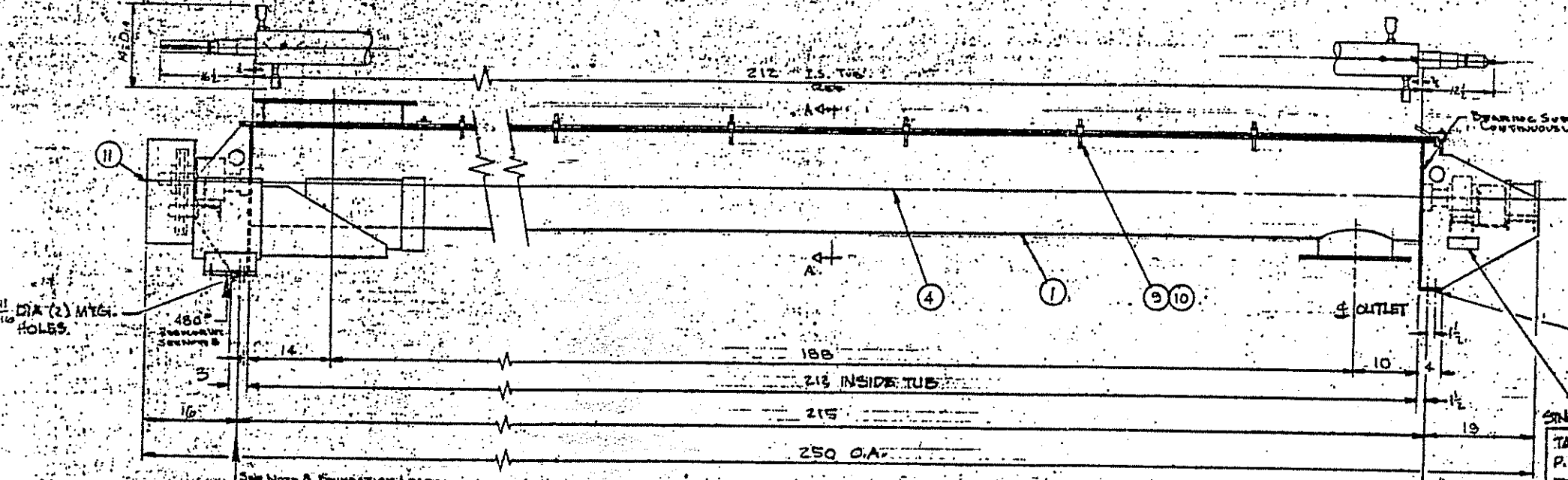


CERTIFIED DRAWING
 BEPEX CORP.
 DATE 6-17-86 PER [Signature]
 FOR FLOOR/PHILLIPS

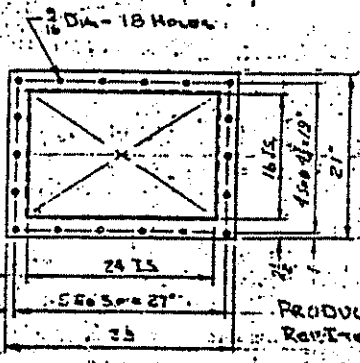
ITEM	QTY	MAT'L	PART NO.	DESCRIPTION
1	1		D502967	Housing W/alignment
2	1		D502968	Cover
3	1		C502969	INLET
4	1		C502970	ROTOR ASSY
5	1		B502971	COVER SUPPORT
6	2		C502972	SEAL CASE- END PLATE
7	1		A502973	LIMIT SWITCH MOUNTING
8	1		C502974	ZERO SPEED SWITCH
9	14		A438759	MIXER CLAMP
10	28			SET COLLARS
11	1		C502975	GUARD
12	3			SV900 BELTS
13	1			16.0" O.D. SV 36R DRIVE 2 1/2"
14	1			8.0" O.D. SV 36R DRIVE 2 1/2"
15			B502976	SEAL HOUSING
16			B502977	SEAL RETAINING PLATE
17	4			JOHN-MANNING HIGH PRESSURE OIL SEAL # 15672HP-243.0x37.00?
18	2	WHITE SILICONE		GASKET 1/2" x 3/4" x 3/4" O.D.
19	26			LOCK WASHER 1/2"
20	26			HEX NUT 1/2" N.C.
21	2			SKF BALL BEARING PILLOW BLOCK MOUNT - SAF1314 2 1/2" DIA (1) FEM (1) M
22	A/R			SHIM
23	4			HEX HD CAP SCR 5/8" N.C. x 3 1/2"
24	4			HEX NUT 5/8" N.C.
25	4			LOCK WASHER 5/8"
26	2	WHITE SILICONE		GASKET
27	1			DODGE SPEED REDUCED TH300 - CUM RATIO 5.06:1, 350 RPM Output w/SCOT M HIGH SPEED COUPLER-1TH SLIDE BANG
28	1	Mount To Be Furnished By Phillips		104.0" 1750 RPM MOTOR 3/65/130-460 C.T. DIVE G.D. HIGH EFFICIENCY FRAME-25



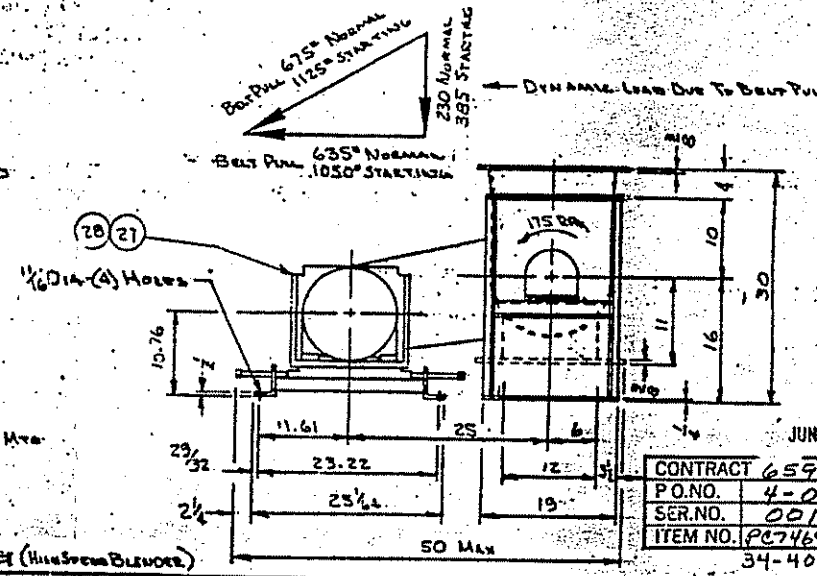
IN ADDITION TO DYNAMIC LOADS DUE TO BELT PULL SUPPORTS SHOULD BE DESIGNED FOR AN UNBALANCED FORCE OF 80" ACTING IN ANY DIRECTION AT THE CENTER AT THE FREQUENCY OF ROTATION



- NOTES:
1. ALL PRODUCT CONTACT AREAS TO BE 304 STAINLESS STEEL
 2. INTERNAL FINISH TO BE 140 GRIT POLISH. INTERNAL WELDS: GROUND SMOOTH AND POLISHED TO 140 GRIT FINISH
 3. ALL CARBON STEEL TO BE SANDBLASTED AND TREATED ONE COAT PRIME AND ONE FINISH COAT
 4. SHAFT SEALS ARE DOUBLE LIP NIP FORCE
 5. VESSEL END PLATES ARE SLOTTED, SO PUFF CAN BE REMOVED FROM TOP
 6. GASKETS TO BE NBR OR PTFE, OR WHITE SILICONE
 7. UNIT WEIGHT APPROX. 2000 LBS INCLUDING DRIVE
 8. THESE LOADS DO NOT INCLUDE DYNAMIC LOADS DUE TO BELT PULL UNBALANCED FORCES.



PRODUCT INLET
 REV ITEM 3



JUN 1
 CONTRACT 6591
 P.O. NO. 4-07
 SER. NO. 0010
 ITEM NO. PC7469
 34-400

STAINLESS TACT (Housing Bearings)
 TAG # PC-7469-117-34-4001 / MCC-34-2500
 P.O. # 659106-4-0706
 FAC / INV No. A14117

STAINLESS TACT (MOTOR)
 TAG No PC-7469-117-30-344001/MCC-34-2589
 P.O. No 659106-4-0706
 FAC / INV No A14117

PRODUCT OF SHAFT FLANGE
 19 O.D. x 12 I.D. x 3/8 T.S.W. (12) I.D. DIA HOLES 80, 88, 94, 100 DIA. E.C. STRADDLE: 6'S

REV.	DATE	ECN. NO.	DESCRIPTION	DR	EC
D	6-11-84		Show Location of Limit Switch Item 7	RAJ	
C	5-2-86		Revised Per. Mfg. Co. Cert. Paint 5-2-86	RAJ	
B	5-2-86		Revised Per. Approval Draw 3/12/86 Per 4-21-86	RAJ	
A	3-13-86		SEVERAL REV.	RAJ	

THIS DRAWING IS THE PROPERTY OF BEPEX CORPORATION AND IS TRANSMITTED IN CONFIDENCE. THE REPRODUCTION, USE, OR DISCLOSURE, IN WHOLE OR IN PART, OF THIS DESIGN CONTAINED HEREIN IS PROHIBITED WITHOUT THE WRITTEN CONSENT OF BEPEX CORPORATION.

ISO 158 METHOD A

TITLE: TS-14 E HIGH SPEED CONVEYOR

SCALE: 1"=10"

DRAWING NO: D501794

PART NO: SIM 70

DATE: 12-21-84

BY: [Signature]

FOR: NEXT ASSY

SHEET 1 OF 1