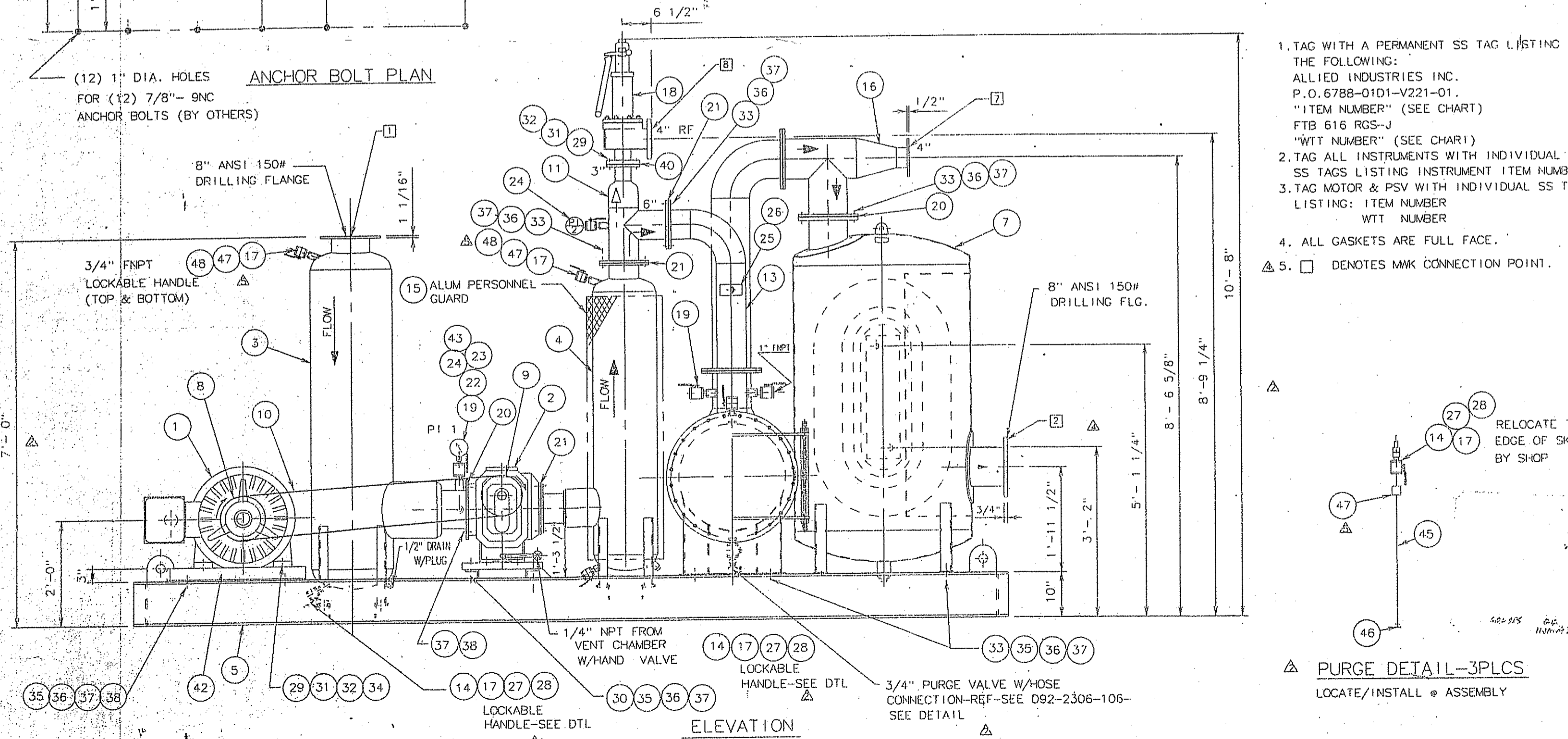
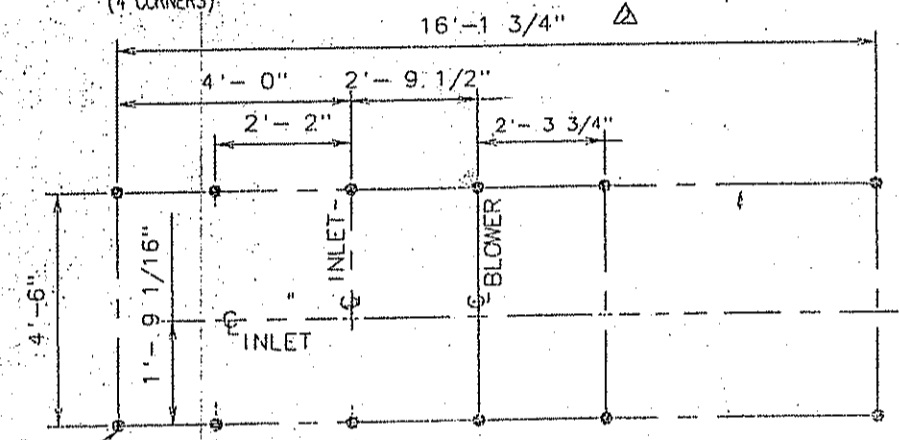
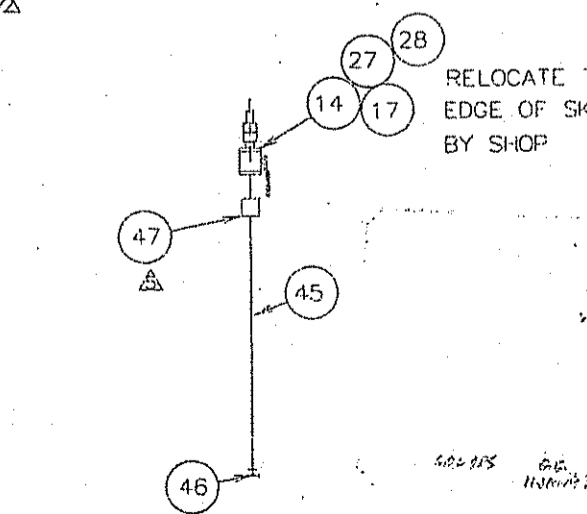


ITEM NO.	PART NO.	UNIT QTY.	TOTAL QTY.	DESCRIPTION	WT.	MAT'L.
4.7	8604-0151	4	8	COUPLING-3/4" NPT		S.S.
4.8	8604-0162	4	8	NIPPLE-3/4" NPT X 2"		S.S.

BLOWER ITEM NO.	BLOWER SERIAL NO.	BLOWER WGT	MOTOR ITEM NO.	MOTOR WGT	FILTER ITEM NO.	COOLER ITEM NO.	PI #1	PI #2	PSV	TI
HC-1024-A14059-05-4421	92-2-2306-102D	05000499	HC-1024-A14059-30-4421	30001835	HC-1024-A14059-35-4111	HC-1024-A14059-41-4212	42607	42608	46529	48611
HC-1024-A14059-05-8027	92-2-2306-102E	05000501	HC-1024-A14059-30-8027	30001837	HC-1024-A14059-35-8011	HC-1024-A14059-41-8023	02601	02602	06552	08618



- TAG WITH A PERMANENT SS TAG LISTING THE FOLLOWING: ALLIED INDUSTRIES INC. P.O. 6788-01D1-V221-01. "ITEM NUMBER" (SEE CHART) FTB 616 RGS-J "WTT NUMBER" (SEE CHART)
- TAG ALL INSTRUMENTS WITH INDIVIDUAL SS TAGS LISTING INSTRUMENT ITEM NUMBER.
- TAG MOTOR & PSV WITH INDIVIDUAL SS TAG LISTING: ITEM NUMBER WTT NUMBER
- ALL GASKETS ARE FULL FACE.
- DENOTES MMK CONNECTION POINT.



ITEM NO.	PART NO.	UNIT QTY.	TOTAL QTY.	DESCRIPTION	WT.	MAT'L.
1	230600102101	1	2	MOTOR-100 HP-1750 RPM 460/3PH/60HZ 445 U -TEFC, 1.0 SF, CL.1, DIV.2, GR C & D		800 DUC. IRON
2	230600101102	1	2	BLOWER-RGS 616 J WHISP-IR-FT IN/RT OUT WITH GALV. SOLE PLATES-GAS PUMP, SPLASH LUB		S.S.
3	230600101103	1	2	SILENCER-INLET-RISYC-8 UNIVERSAL-ASME SEC. VIII STAMPED-8" INLET & OUTLET		S.S.
4	230600101104	1	2	SILENCER-DISCHARGE-SDYC-6 UNIVERSAL-ASME SEC. VIII STAMPED-6" INLET & OUTLET		S.S.
5	SH1-3	1	2	BASE-STRUCTURAL- C10 X 15.3 (GALV)		C.S.
6	D92-2306-106	1	2	FILTER-INLINE AIR-FT/AF 3000		ALUM.
7	D92-2306-109	1	2	COOLER-AIR-FTAC 2500		ALUM.
8	230600102108	1	2	MOTOR SHEAVE-SVX 5 GROOVE 10.3" O.D W/2 7/8" BORE (BUSHING #3020)		C.S.
9	230600102109/1	1	2	BLOWER SHEAVE-SVX 5 GROOVE 9.00" O.D. W/ 2" BORE (BUSHING # 3020)		C.S.
10	6544000101107	5	10	BELT- MATCH V-BELT 5VX-1500 (STATIC COND.)		
11	D92-2306-101	1	2	TEE-RELIEF-6" X 3"		ALUM.
12	D92-2306-101	1	2	GUARD-BELT		ALUM.
13	D92-2306-101	1	2	SPOOL-6"		ALUM.
14	230600101114	2	4	NIPPLE-3/4" NPT X CLOSE-S/160		GALV
15	E92-2306-101	1	2	PERSONNEL GUARD-EXPANDED METAL		ALUM.
16	D92-2306-101	1	2	SPOOL-8" X 4" TEE		ALUM.
17	229600148118	2	4	VALVE-BALL-3/4" FNPT & 3/4" MNPI APOLLO #70-804-27		BRONZE
18	230600101118	1	2	VALVE-RELIEF-CONSOLIDATED #1905-30LC 3" X 4" BELLON'S		STEEL
19	229600148120	7	14	VALVE-BALL-1" FNPT & 1" MNPI-APOLLO #70-805-03		BRONZE
20	230600101120	4	8	GASKET-8"-150# DRILLING-1/8" THK. WH. SILICONE		RUBBER
21	645000101117	4	8	GASKET-8"-150# DRILLING-1/8" THK. SILICONE		RUBBER
22	230600101122	2	4	REDUCING COUPLING-1" NPT X 1/2" NPT-6000 LB.		GALV
23	230600101123	2	4	NIPPLE-1" NPT X CLOSE - 5/160		GALV
24	229600148116	2	4	PRESSURE INDICATOR-ASHCROFT #45-12785SL-R41-KH8 0-30 PSI		
25	229600148117	1	2	TEMP. INDICATOR-ASHCROFT #5DE160E06050/300 0-300 °F		
26	229600148130	1	2	THERMOWELL-ASHCROFT #2601304-10, 1" MNPI X 1/2" FNPT		S.S.
27	230600101127	2	4	STEM-HOSE CONNECTOR-SWAGelok #8-OF12-S-12PF		BRASS
28	229600101139	2	4	BODY-HOSE CONNECTOR-SWAGelok #8-OF12-B-12PF		BRASS
29	8005-0007	29	58	CAP SCREW-HEX, HD-5/8" X 11NC X 2" LG		S.S.
30	8005-0051	4	8	CAP SCREW-HEX, HD-3/4" X 10NC X 3 1/2" LG		S.S.
31	8005-0015	24	48	NUT-HEX-REGULAR-5/8" X 11NC		S.S.
32	8005-0014	24	48	WASHER-HELICAL SPRING-LOCKTYPE -5/8"		S.S.
33	8006-0007	40	80	CAP SCREW-HEX, HD-3/4" X 10NC X 2 1/2" LG		S.S.
34	8005-0100	16	32	WASHER-BEVELLED-5/8"		S.S.
35	8006-0096	20	40	WASHER-BEVELLED-3/4"		S.S.
36	8006-0012	48	96	NUT-HEX-REGULAR-3/4" X 10NC		S.S.
37	8006-0011	56	112	WASHER-HELICAL SPRING-LOCKTYPE -3/4"		S.S.
38	8006-0005	20	40	CAP SCREW-HEX, HD-3/4" X 10NC X 2" LG		S.S.
39	8002-0006	4	32	CAP SCREW-HEX, HD-3/8" X 16NC X 1 1/4" LG		S.S.
40	230600101140	1	2	GASKET-3" ANSI 150 LB. DRILLING X 1/8" THK WH. SILICONE		RUBBER
41	8002-0019	4	32	NUT-HEX-REGULAR-3/8" X 16NC		S.S.
42	230600102101/1	1	2	ADJUSTABLE SLIDE BASE-445U FRAME MOTOR-OVERLY HANDLE B2 OR E0		GALV
43	229600148119	2	4	SNUBBER-CHEMICALQUIP #50SC-1/2" NPT POROSITY G		S.S.
44	8002-0016	4	32	WASHER-HELICAL SPRING-LOCKTYPE -3/8"		S.S.
45	00754060616	1	6	P1P-3/4" S/40 X 3"-0" LG.		ALUM.
46	8804-0154	3	6	STREET ELL-3/4" NPT X 90"		ALUM.

OPERATING CONDITIONS	
BLOWER SPEED	2003 RPM
BRAKE H.P.	73 BHP
INLET VOLUME	1192 ICFM
DIFF. PRESSURE	10.3 PSIG
PRESS. RELIEF VALVE SETTING	25 PSI Δ
PRESS. SWITCH SETTING	BY OTHERS

QUANTITY: (2) REQ'D TAG NO. SEE CHART
 UNIT WEIGHT: 8000 LBS SERIAL NO. SEE CHART
 (APPROX)
 SYSTEM NO.: SECONDARY

PROPRIETARY INFORMATION

Design information contained herein is proprietary and confidential, and the exclusive property of Allied Industries, Inc. No portion of any design information contained herein may be used by, or disclosed to, unauthorized personnel without the express written consent of Allied Industries.

PRE-ENGINEERED PRODUCTS

GENERAL CONSTRUCTION AND FABRICATION DETAILS ARE NOT SUBJECT TO CLIENT APPROVAL OR INSPECTION

PRINT RECORD

DATE	REV.	FOR	NO.	DESCRIPTION
5/19/92	1	FAB	9	
5/19/92	1	CERT FINAL	1+3	
8/14/92	2	FAB	9	
8/14/92	2	CERT FINAL	1+3	
8/19/92	3	FAB	9	
8/19/92	3	CERT FINAL	1+3	
11/4/92	4	FAB	9	
11/4/92	4	CERT FINAL	1+3	
12/2/92	5	FAB	9	
12/2/92	5	CERT FINAL	1+3	

EXTEND MAKE-UP TO CLEAR VALVE HANDLE SHOW CORRECT EXTENSION COMPONENTS: 10 17 & 18, CORRECT #24, #18 WAS OPERATIONAL

DESIGN CHANGE PER CUSTOMER

ADD DIMS. NO'S

REV PER CUSTOMER COMMENTS

REV PER CUSTOMER COMMENTS

ALLIED INDUSTRIES HOUSTON, TX.

TITLE: BLOWER-PRESSURE-FTB-616 RGS-JV

SECONDARY TRANSPORT BLOWER ITEM NO. 102

CUSTOMER: PHILLIPS PETROLEUM CO./ M.W. KELLOGG CO.

DESTINATION: HOUSTON CHEMICAL COMPLEX-HOUSTON, TEXAS

POLYPROPYLENE PLANT CUST. P.O. 6788-01D1-V221-01

DRAWN BY: DID DATE: 5/9/92 S/O.

CHK'D. BY: B.H. DATE: 6/19/92

CERTIFIED FOR FABRICATION: B.H. DATE: 6/19/92

DWG. NO. D92-2306-102-2

SHT. 1 OF 3

REV. 5