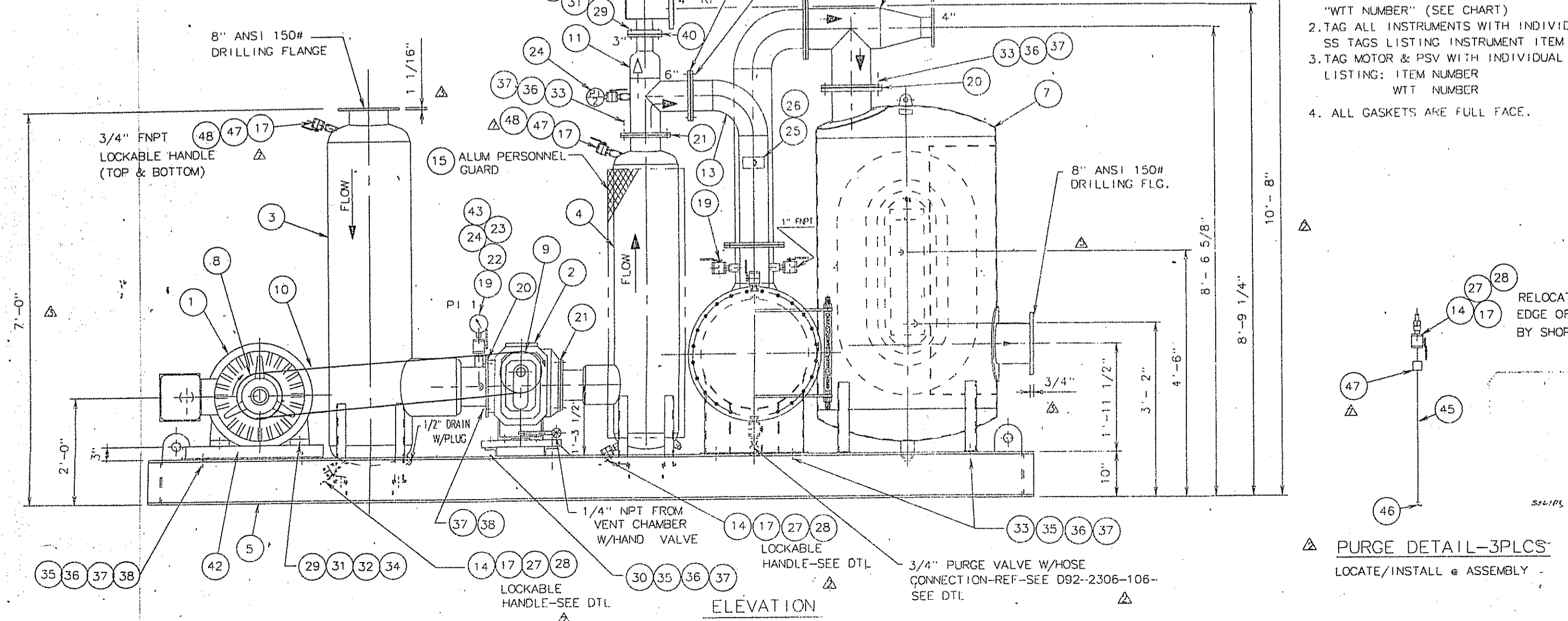
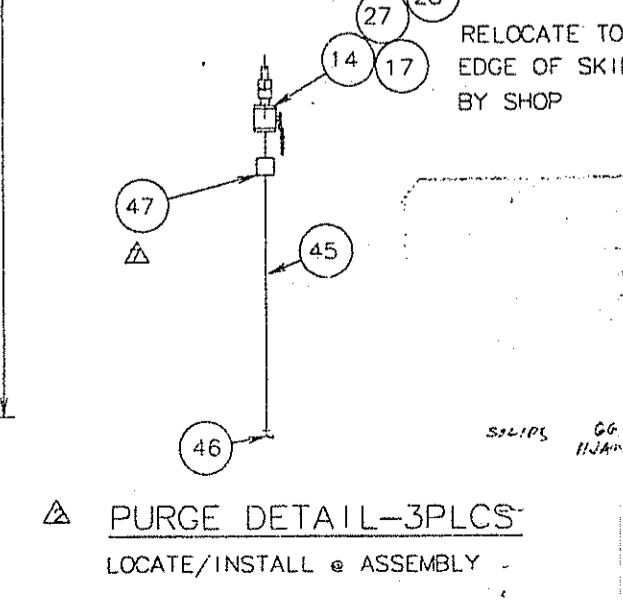


(12) 1" DIA. HOLES FOR (12) 7/8" - 9NC ANCHOR BOLTS (BY OTHERS)



- TAG WITH A PERMANENT SS TAG LISTING THE FOLLOWING: ALLIED INDUSTRIES INC. P.O. 6788-0101-V221-01. "ITEM NUMBER" (SEE CHART) FTB 616 RCS-J "WIT NUMBER" (SEE CHART)
- TAG ALL INSTRUMENTS WITH INDIVIDUAL SS TAGS LISTING INSTRUMENT ITEM NUMBER.
- TAG MOTOR & PSV WITH INDIVIDUAL SS TAG LISTING: ITEM NUMBER WIT NUMBER
- ALL GASKETS ARE FULL FACE.



△ PURGE DETAIL-3PLCS LOCATE/INSTALL & ASSEMBLY

ITEM NO.	PART NO.	UNIT QTY.	TOTAL QTY.	DESCRIPTION	WT.	MAT'L.
47	8604-0151	4	8	COUPLING-3/4" NPT		S.S.
48	8604-0162	4	8	NIPPLE -3/4" NPT X 2"		S.S.

BLOWER ITEM NO.	BLOWER SERIAL NO.	BLOWER WIT NO.	MOTOR ITEM NO.	MOTOR WIT NO.	FILTER ITEM NO.	COOLER ITEM NO.	PI #1	PI #2	PSV	T1
HC-1024-A14059-05-3421	92-2306-103	05000498	HC-1024-A14059-30-3421	30001834	HC-1024-A14059-35-3111	HC-1024-A14059-41-3212	32607	32608	36529	38611

ITEM NO.	PART NO.	UNIT QTY.	TOTAL QTY.	DESCRIPTION	WT.	MAT'L.
1	2306000103101	1	1	MOTOR- 60 HP-1750 RPM 460/3PH/60HZ 405 U-TEFC, 1.0 SF, CL.1, DIV.2, GR C & D		
2	2306000101102	1	1	BLOWER-RCS 616 J WHISPAIR-LFT IN/RT OUT WITH GALV. SOLE PLATES-GAS PUMP, SPLASH LUB	800	DOC. IRON
3	2306000101103	1	1	SILENCER-INLET-R1SYC-8 UNIVERSAL ASME SEC. VIII STAMPED-8" INLET & OUTLET		S.S.
4	2306000101104	1	1	SILENCER-DISCHARGE-SDYC-6 UNIVERSAL-ASME SEC. VIII STAMPED-6" INLET & OUTLET		S.S.
5	SHT. J	1	1	BASE-STRUCTURAL- C10 X 15.3 (GALV)		C.S.
6	D92-2306-106	1	1	FILTER-INLINE AIR-FTJAF 3000		ALUM.
7	D92-2306-109	1	1	COOLER-AIR-FTAC 2500		ALUM.
8	2306000103108/1	1	1	MOTOR SHEAVE-5VX 3 GROOVE 13.2" O.D. W/2 7/8" BORE (BUSHING #3020)		C.S.
9	2306000103109/1	1	1	BLOWER SHEAVE-5VX 3-GROOVE-15.0" O.D. W/ 2" BORE (BUSHING # 3020)		C.S.
10	2306000103110	3	3	BELT- MATCH V-BELT 5VX-1600 (STATIC COND.)		
11	2306-101 SHT 2	1	1	TEE-RELIEF-6" X 3"		ALUM.
12	2306-101 SHT 2	1	1	GUARD-BELT		ALUM.
13	2306-101 SHT 2	1	1	SPOOL-6"		ALUM.
14	2306000101114	2	2	NIPPLE-3/4" NPT X CLOSE-S/160		GALV.
15	2306-101 SHT 4	1	1	PERSONNEL GUARD-EXPANDED METAL		ALUM.
16	2306-101 SHT 2	1	1	SPOOL-8" X 4" TEE		ALUM.
17	2296000148118	2	2	VALVE-BALL-3/4" FNPT & 3/4" MNPT APOLLO #70-804-27		BRONZE
18	2306000101118	1	1	VALVE-RELIEF-CONSOLIDATED #1905 30LC 3" X 1" BELLWS		STEEL
19	2296000148120	7	7	VALVE-BALL-1" FNPT & 1" MNPT-APOLLO #70-805-03		BRONZE
20	2306000101120	4	4	GASKET-8"-150# DRILLING-1/8" THK. WH. SILICONE		RUBBER
21	6450000101117	4	4	GASKET-6"-150# DRILLING-1/8" THK. SILICONE		RUBBER
22	2306000101122	2	2	REDUCING COUPLING-1" NPT X 1/2" NPT-6000 LB.		GALV.
23	2306000101123	2	2	NIPPLE-1" NPT X CLOSE - S/160		GALV.
24	2296000148116	2	2	PRESSURE INDICATOR-ASHCROFT #45-12795SL-04L-XNH 0-30 PSI		
25	2296000148117	1	1	TEMP. INDICATOR-ASHCROFT #50E160E06050/300 0-300 °F		
26	2296000148130	1	1	THERMOWELL-ASHCROFT #2601304-10, 1" MNPT X 1/2" FNPT		S.S.
27	2306000101127	2	2	STEM-HOSE CONNECTOR-SWAGelok #8-QF12-S-12PF		BRASS
28	2296000101139	2	2	BODY-HOSE CONNECTOR-SWAGelok #8-QF12-B-12PF		BRASS
29	8005-0007	29	29	CAP SCREW-HEX. HD-5/8" X 11NC X 2" LG.		S.S.
30	8006-0051	4	4	CAP SCREW-HEX. HD-3/4" X 10NC X 3 1/2" LG.		S.S.
31	8005-0015	24	24	NUT-HEX-REGULAR-5/8" X 11NC		S.S.
32	8005-0014	24	24	WASHER-HELICAL SPRING-LOCKTYPE -5/8"		S.S.
33	8006-0007	40	40	CAP SCREW-HEX. HD-3/4" X 10NC X 2 1/2" LG.		S.S.
34	8005-0100	16	16	WASHER-BEVILLED-5/8"		S.S.
35	8006-0096	20	20	WASHER-BEVILLED-3/4"		S.S.
36	8006-0012	48	48	NUT-HEX-REGULAR-3/4" X 10NC		S.S.
37	8006-0011	56	56	WASHER-HELICAL SPRING-LOCKTYPE -3/4"		S.S.
38	8006-0005	20	20	CAP SCREW-HEX. HD-3/4" X 10NC X 2" LG.		S.S.
39	8002-0006	4	4	CAP SCREW-HEX. HD-3/8" X 16NC X 1 1/4" LG.		S.S.
40	2306000101140	1	1	GASKET-3" ANSI 150 LB. DRILLING X 1/8" THK. WH. SILICONE		RUBBER
41	8002-0019	4	4	NUT-HEX-REGULAR-3/8" X 16NC		S.S.
42	230600010103/1	1	1	ADJUSTABLE SLIDE BASE-40# FRAME MOTOR-OVERLY HAITE B2 OR EQ.		GALV.
43	2296000148119	2	2	SNUBBER-CHEMIQUIP #50SC-1/2" NPT POROSITY G		S.S.
44	8002-0016	4	4	WASHER-HELICAL SPRING-LOCKTYPE -3/8"		S.S.
45	00754080616	3	3	PIPE-3/4" S/40 X 3'-0" LG.		ALUM.
46	8604-0154	3	3	STREET ELL-3/4" NPT X 90°		S.S.

OPERATING CONDITIONS	
BLOWER SPEED-----	1540 RPM
BRAKE H.P.-----	29 BHP
INLET VOLUME-----	919 ICFM
DIFF. PRESSURE-----	5.3 PSIG
PRESS. RELIEF VALVE SETTING-----	25 PSI
PRESS. SWITCH SETTING-----	BY OTHERS

QUANTITY: (1) REQ'D TAG NO. SEE CHART  
 UNIT WEIGHT: 6000 LBS SERIAL NO. SEE CHART  
 (APPROX)  
 SYSTEM NO.: SECONDARY

**CERTIFIED**  
 BY: [Signature]  
 DATE: JAN 06 1993

DATE	REV.	FOR	NO.
6/19/92	1	FAB	9
6/19/92	1	CERT FINAL	1+3
8/14/92	2	FAB	9
8/14/92	2	CERT FINAL	1+3
9/10/92	3	FAB	9
9/10/92	3	CERT FINAL	1+3
9/22/92	4	FAB	9
9/22/92	4	CERT FINAL	1+3
11/14/92	5	FAB	9
11/14/92	5	CERT FINAL	1+3
12/11/92	6	FAB	9
12/11/92	6	CERT FINAL	1+3
1/5/93	7	FAB	9
1/5/93	7	CERT FINAL	1+3

PRINT RECORD  
 DATE: 6/19/92  
 REV: 1  
 FOR: FAB  
 NO: 9  
 TITLE: BLOWER-PRESSURE-FTB-616 RCS-JV  
 SECONDARY TRANSPORT BLOWER ITEM NO.: 103  
 CUSTOMER: PHILLIPS PETROLEUM CO. / W.W. KELLOGG CO.  
 DESTINATION: HOUSTON CHEMICAL COMPLEX-HOUSTON, TEXAS.  
 POLYPROPYLENE PLANT CUST. P.O. 6788-0101-V221-01  
 DRAWN BY: DID DATE: 5/9/92  
 CHK'D. BY: B.H. DATE: 6/18/92  
 CERTIFIED FOR FAB. DATE: 6/19/92  
 DWG. NO.: 092-2306-103  
 SHEET: 1 OF 3  
 REV: 7