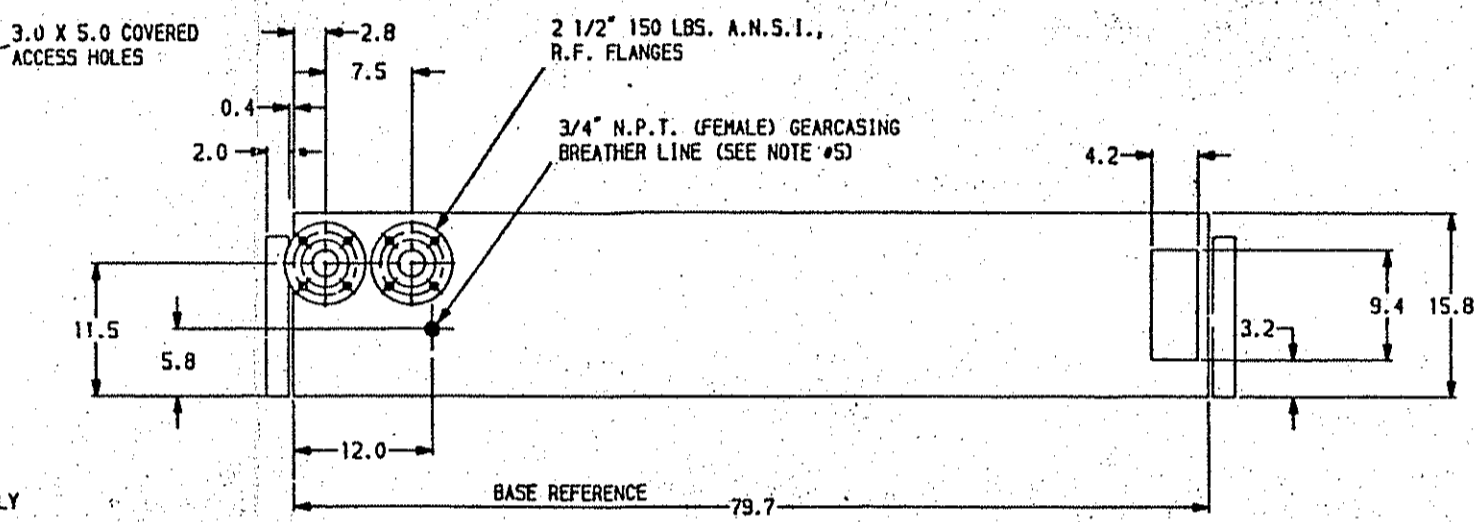
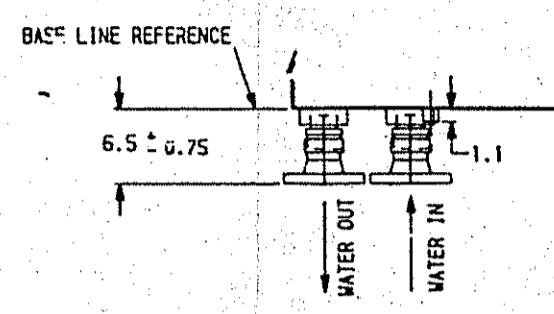
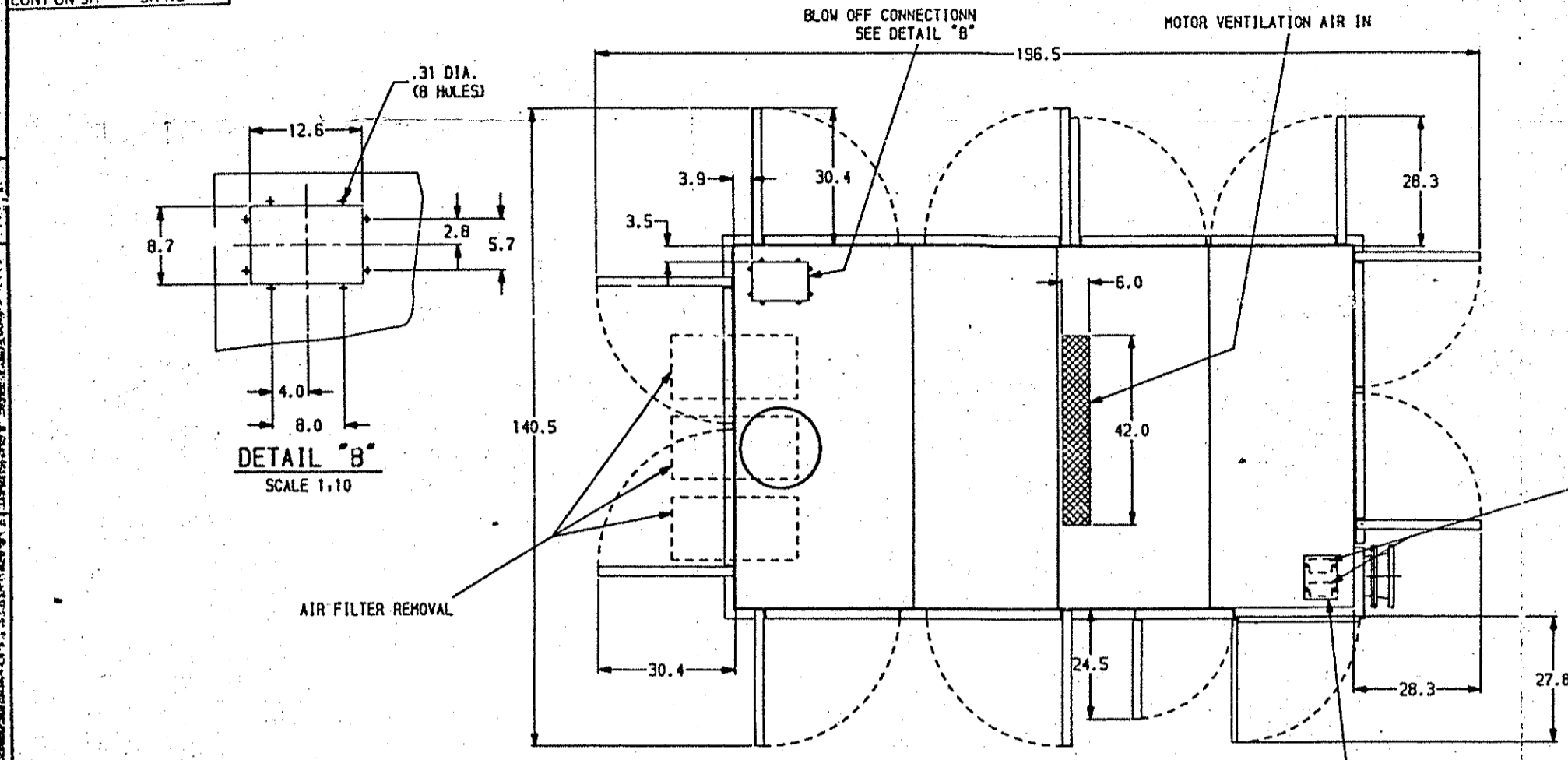
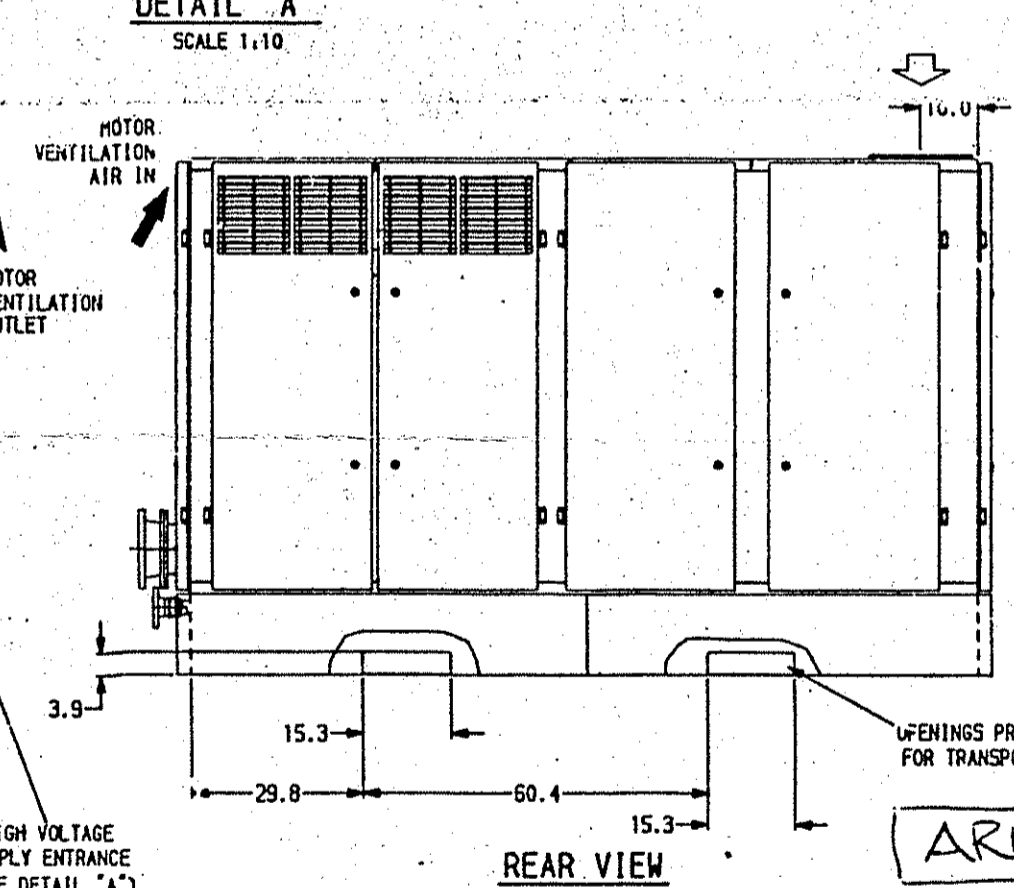
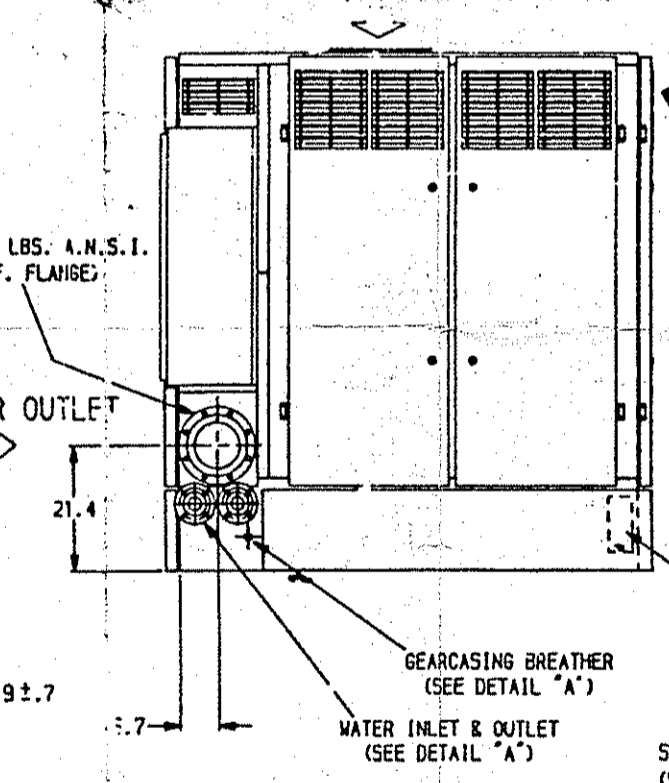
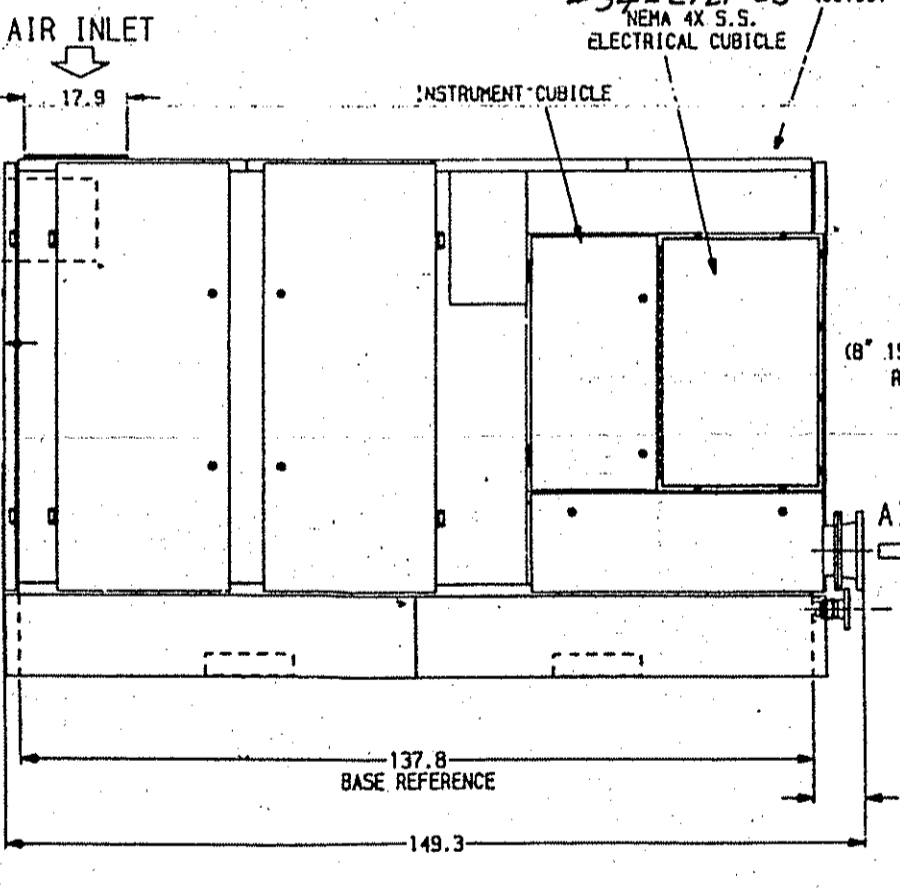
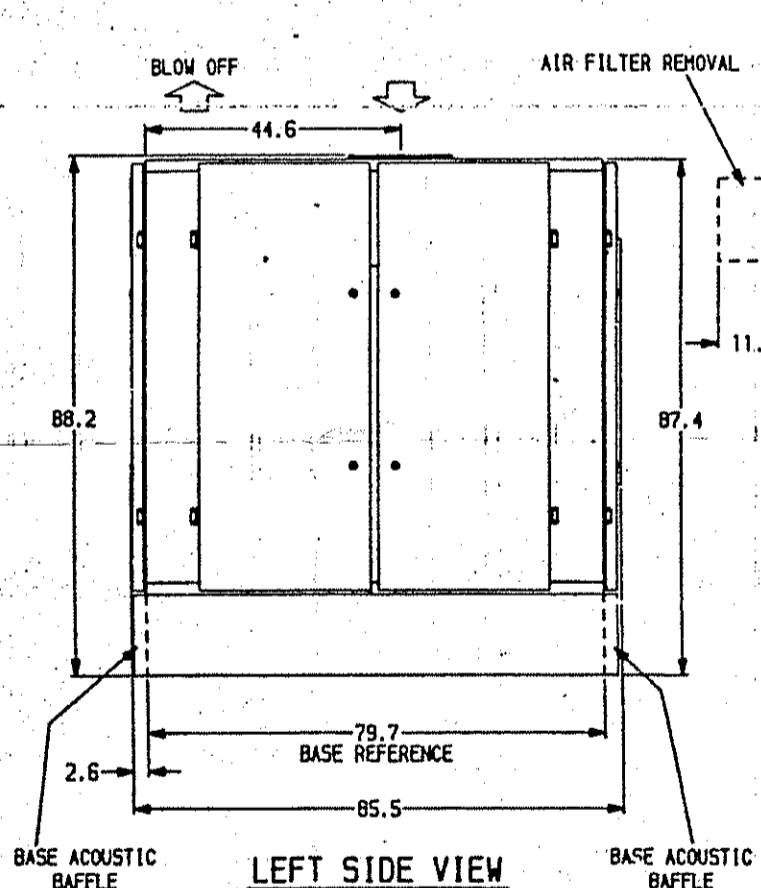


CONT ON SH SH NO



- NOTES:**
1. THIS ENTRANCE IS FOR VOLTAGE BELOW 600V. HIGH VOLTAGE MOTORS REQUIRE SEPARATE CONDUIT ENTRANCE.
  2. TOTAL WEIGHT, 15,000 LBS.
  3. DOORS LIFT OFF MACHINE FOR MAINTENANCE.
  4. DISCHARGE PIPE IS RIGIDLY MOUNTED. CUSTOMER'S PIPING MUST BE DESIGNED TO ALLOW FOR THERMAL EXPANSION.
  5. OIL SUMP BREATHER CONNECTION; SEE INSTALLATION INSTRUCTIONS FOR SERVICING.
  6. THESE UNITS DO NOT REQUIRE ANCHOR BOLTS DUE TO THEIR WEIGHT.
  7. NO DYNAMIC LOADS ARE TRANSMITTED.



**McKINSTRY**  
#54-2721-05  
NEMA 4X S.S.  
ELECTRICAL CUBICLE

SUGGESTED INCOMING POWER SUPPLY LOCATION (SEE NOTE #1)

Client: Phillips-Sumika Polypropylene Company  
Location: Pasadena, Texas  
(Full) Item number: PS-2001-220000- SEE BELOW  
Requisition number: 6014 02D1-Y221-01  
Job assignment number: JA-46-9098  
WTT number: WTT SEE BELOW

ITEM NUMBER	WTT NUMBER
PS-2001-220000-16-5008	16000194
PS-2001-220000-30-5144	30002670
PS-2001-220000-16-5009	16000195
PS-2001-220000-30-5145	30002673
PS-2001-220000-16-5010	16000196
PS-2001-220000-30-5146	30002676

- PRELIMINARY-NOT FOR CONSTRUCTION
  - FOR APPROVAL-RETURN WITHIN 10 DAYS TO AVOID SHIPMENT DELAY
  - CERTIFIED FOR CONSTRUCTION-ANY CHANGES AFFECT PRICE AND DELIVERY
  - FOR INFORMATION ONLY
- BY \_\_\_\_\_ DATE \_\_\_\_\_

MEDUSA Rev. 6.04 CAD Drawing  
CAD produced drawing originals shall be stored electronically and be accessible by the drawing number. No manually made changes are allowed on this drawing.

UNLESS OTHERWISE SPECIFIED DIMENSIONS ARE IN INCHES TOLERANCES ON

DECIMALS	FRACTIONS
± .005	± 1/32
± .010	± 1/16
± .015	± 3/32
± .030	± 1/8
± .060	± 3/16
± .120	± 1/4
± .240	± 1/2
± .480	± 1

ATLAS COPCO COMPTEC INC.  
20 School Road, Voorheesville, New York 12196

DWN BY: DCA 01-25-94  
CHKD: [Signature]  
DES ENO: [Signature]  
PROJ ENG: [Signature]  
MFG: [Signature]

ISSUED: 10/17/94

SCALE: .05=1 WT. ACT. CALC.

GENERAL ARRANGEMENT ZAS-PN-MH-MCH HANDED

D 1310736020 0'

DRAWING NUMBER SH 1 OF 1 REV.

**CERTIFIED**

APPROVED FOR CONSTRUCTION

[Signature]

P.C. NO.	LOG NO.
ITEM NO(S)	16-5008/9/10
DISCIPLINE	BY DATE
MECHANICAL	
PROCESS	
1 PIPING	BOU 1/30
2 STEELS	SW 2/1
3 CIVIL/STRUCT	JDC 03FEB95
ELECTRICAL	
INSTRUMENTS	
PROJECT	
4 SOLIDS HANDL	

8-229