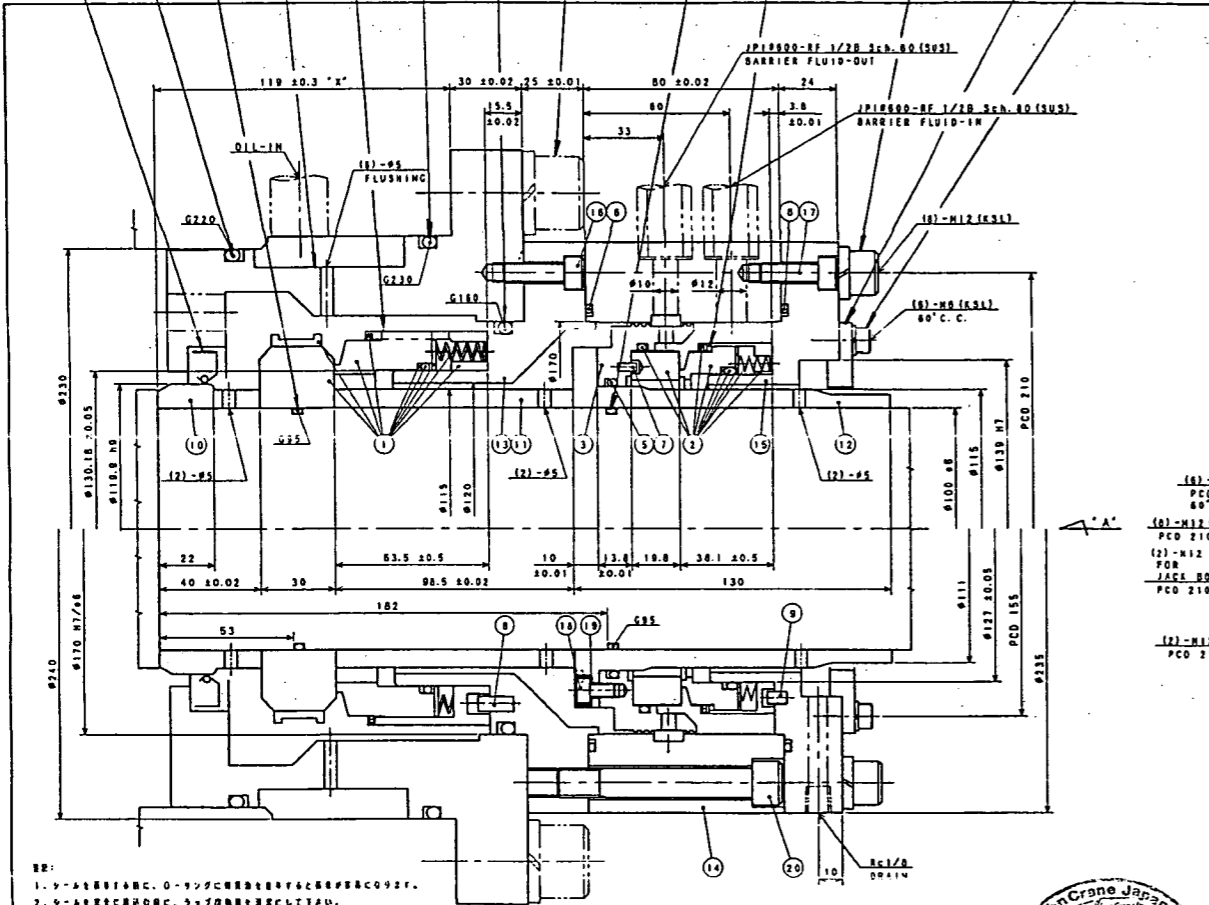
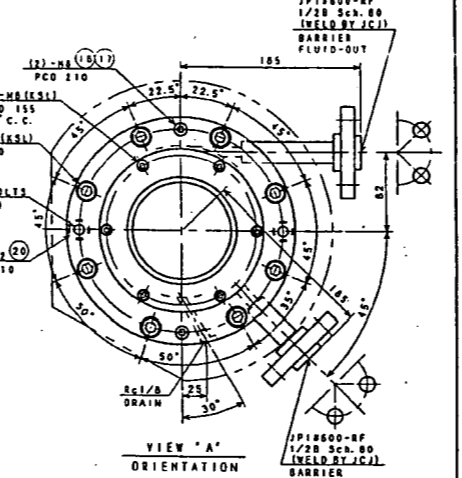


DRAFTING NOTES
04-00863-0にて作成

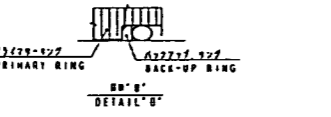
34 31 33 21 1 30 32 23 26 33 1 24 27 22 25 28 29



NO	DESCRIPTION	COMPONENT CODE	MATERIAL	QTY	REMARKS
1	MECHANICAL SEAL	MS-001	SIC/12/CARBON	1	
2	MECHANICAL SEAL	MS-002	SIC/12/CARBON	1	
3	PUMPING RING	PR-F1210-120	SUS304	1	
4					
5	O-RING	0000-247	NYLON	1	ID 117.1xH3.5
6	O-RING	0000-102	NYLON	2	ID 177.4xH3.5
7	PIV	43-24	SUS316	1	
8	PIV	44-151	SUS316	1	
9	PIV	45-81	SUS316	1	
10	SPACER SLEEVE	PL-F1307-37	S45C-N	1	
11	INNER SLEEVE	PL-F1307-35	SUS304	1	
12	OUTER SLEEVE	PL-F1307-33	SUS304	1	
13	CLAMP PLATE	DF-F1307-34	SUS316L	1	
14	SEAL CASE	DF-F1307-34	SUS316L	1	
15	END PLATE	DF-F1307-35	SUS316L	1	
16	CAP BOLT	1140-1250-025	SUS304	2	M8x25L
17	CAP BOLT	1140-1250-025	SUS304	2	M8x25L
18	CAP BOLT	1140-1250-025	SUS304	2	M8x25L
19	LOCK RING	LR-M0000-002	SUS304	8	M8x10L
20	CAP BOLT	1112-1750-080	SUS304	2	M12x80L



- NOTE:
1. OIL O-RINGS BEFORE INSTALLING IN UNIT.
 2. BEFORE COMPLETING THE SEAL INSTALLATION, WIPE THE LAPPED SEALING FACES PERFECTLY CLEAN.
 3. SURFACE OVER WHICH SEAL INSTALLED MUST BE FINISHED.
 4. BACK-UP RING THAT HAS A CHAMFERED SIDE, IS FACED TO COUNTER-BORE OF PRIMARY RING AS SHOWN IN DETAIL "B".



SEALING RING
PRIMARY RING
BACK-UP RING
DETAIL "B"



NO	DESCRIPTION	COMPONENT CODE	MATERIAL	QTY	REMARKS
1	MECHANICAL SEAL	MS-001	SIC/12/CARBON	1	
2	MECHANICAL SEAL	MS-002	SIC/12/CARBON	1	
3	PUMPING RING	PR-F1210-120	SUS304	1	
4					
5	O-RING	0000-247	NYLON	1	ID 117.1xH3.5
6	O-RING	0000-102	NYLON	2	ID 177.4xH3.5
7	PIV	43-24	SUS316	1	
8	PIV	44-151	SUS316	1	
9	PIV	45-81	SUS316	1	
10	SPACER SLEEVE	PL-F1307-37	S45C-N	1	
11	INNER SLEEVE	PL-F1307-35	SUS304	1	
12	OUTER SLEEVE	PL-F1307-33	SUS304	1	
13	CLAMP PLATE	DF-F1307-34	SUS316L	1	
14	SEAL CASE	DF-F1307-34	SUS316L	1	
15	END PLATE	DF-F1307-35	SUS316L	1	
16	CAP BOLT	1140-1250-025	SUS304	2	M8x25L
17	CAP BOLT	1140-1250-025	SUS304	2	M8x25L
18	CAP BOLT	1140-1250-025	SUS304	2	M8x25L
19	LOCK RING	LR-M0000-002	SUS304	8	M8x10L
20	CAP BOLT	1112-1750-080	SUS304	2	M12x80L

NO	DESCRIPTION	COMPONENT CODE	MATERIAL	QTY	REMARKS
S 34	P-GAD4-004H29	FS SEAL			PURCHASE
S 33	BGRN-OG-0095	O-RING			FPM (4D)
S 32	BGRN-OG-0160	O-RING			FPM (4D)
S 31	BGRN-OG-0220	O-RING			FPM (4D)
S 30	BGRN-OG-0230	O-RING			FPM (4D)
S 29	BWME-FA-006	PLAIN WASHER			SS400
S 28	BWVC-BD-006	SPRG WASHER-SQ			SWRH62B
S 27	BWVC-BD-012	SPRG WASHER-SQ			SWRH62B
S 26	BWVC-BD-020	SPRG WASHER-SQ			SWRH62B
S 25	BBLK-RA-M005-016	HEX SOCKET BOLT			SCM435-Q
S 24	BBLK-RA-M012-145	HEX SOCKET BOLT			SCM435-Q
S 23	BBLK-RA-M020-060	HEX SOCKET BOLT			SCM435-Q
S 22	M83140072	LABYRINTH RING			AG061FH-T6
S 21	M83140193	MECHANICAL SEAL BOX			S45C-N
S 1	M83140530	MECHANICAL SEAL (TANDEM)			PURCHASE

REV. NO.	DATE	DESCRIPTION	BY	CHECKED	APPROVED	SCALE	Q. NO.	STD. Q. NO.	REMARKS
MS		M83100544							MECHANICAL SEAL A' SSY (TANDEM)
REV. DATE		PART NO.							
CAREER									
REV. DATE		PART NO.							
CAREER									
REV. DATE		PART NO.							
CAREER									

ISSUED 64-1-8 田辺田辺川口 川口

REVISION NOTE DATE DEAWN DESIGNED CHECKED APPROVED ENGINEERING DEPT.

SCALE -/-

ESS 6 708A STD DWG Q. NO.

SCR - ED. 2A05543

TITLE: MECHANICAL SEAL A' SSY KS31SEH (TANDEM)

DWG NO. M83100544

REV. RO

THE RIGHTS OF AND THE INFORMATION CONTAINED HEREIN ARE THE PROPERTY OF KOBE STEEL, LTD. THIS SHALL NOT BE REPRODUCED OR TRANSMITTED IN ANY FORM OR BY ANY MEANS WITHOUT THE WRITTEN PERMISSION OF KOBE STEEL, LTD.