

DRAFTING NOTES
04-00863-0にて作成

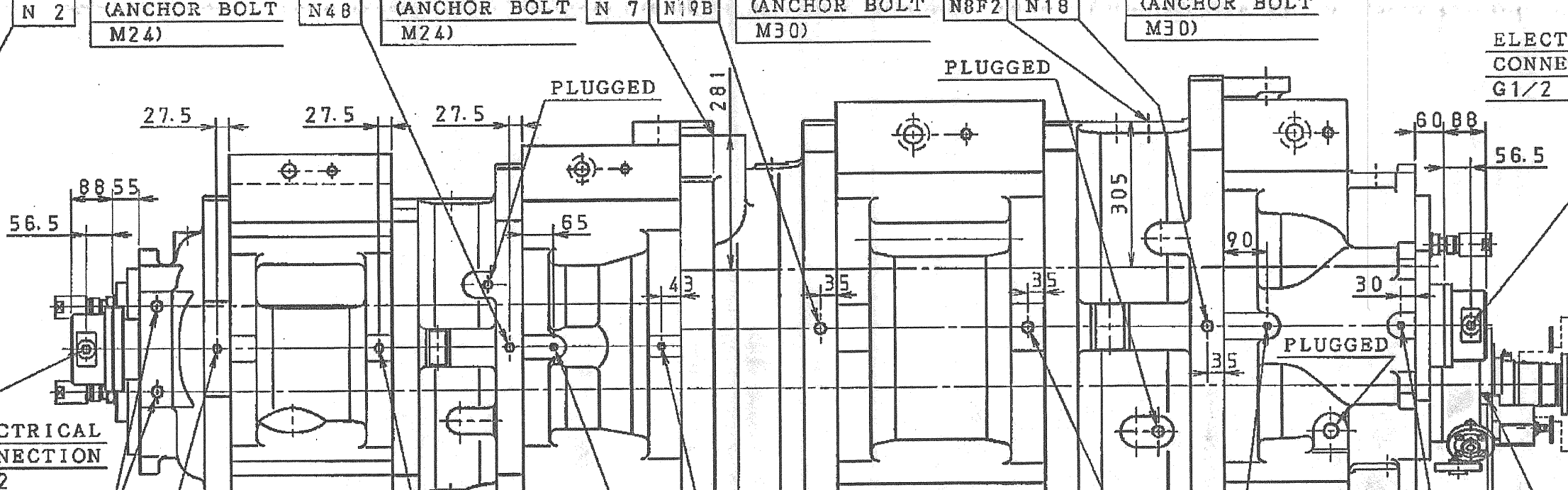
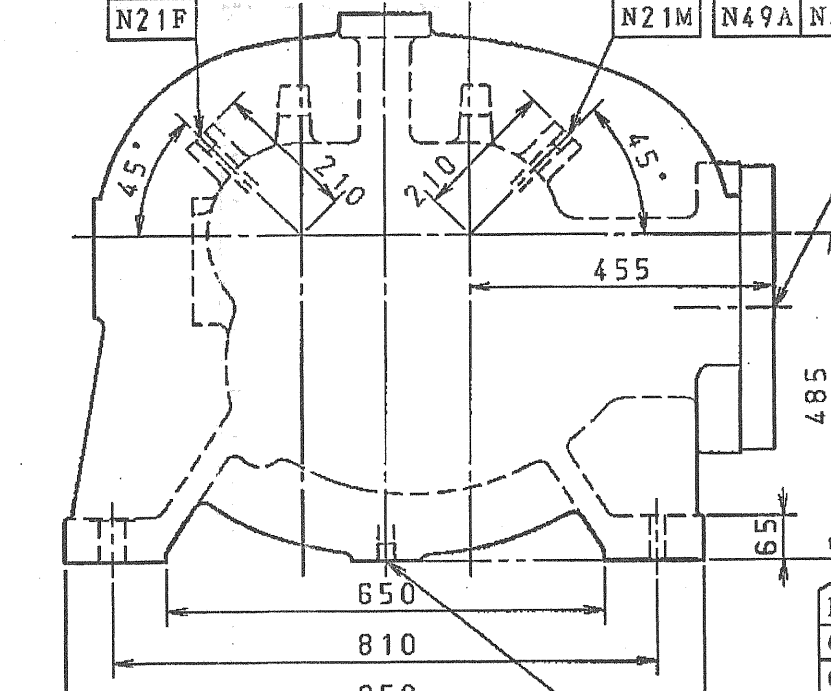
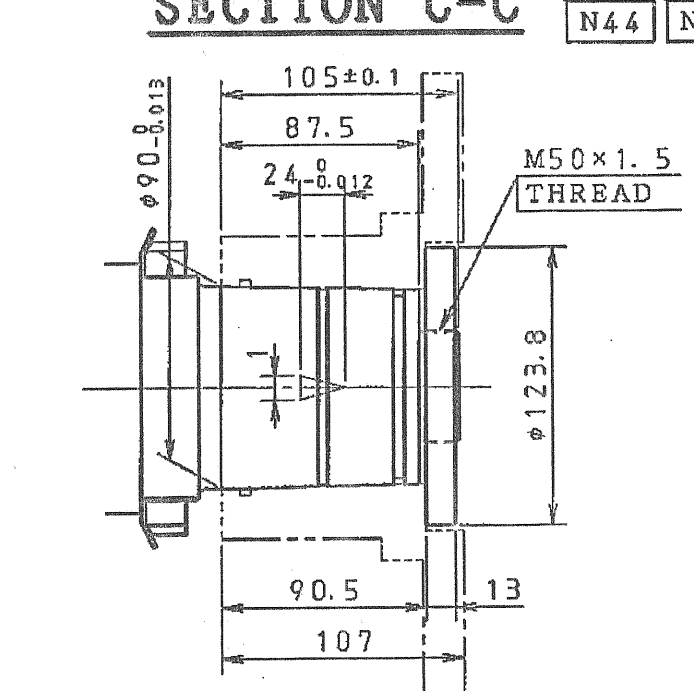
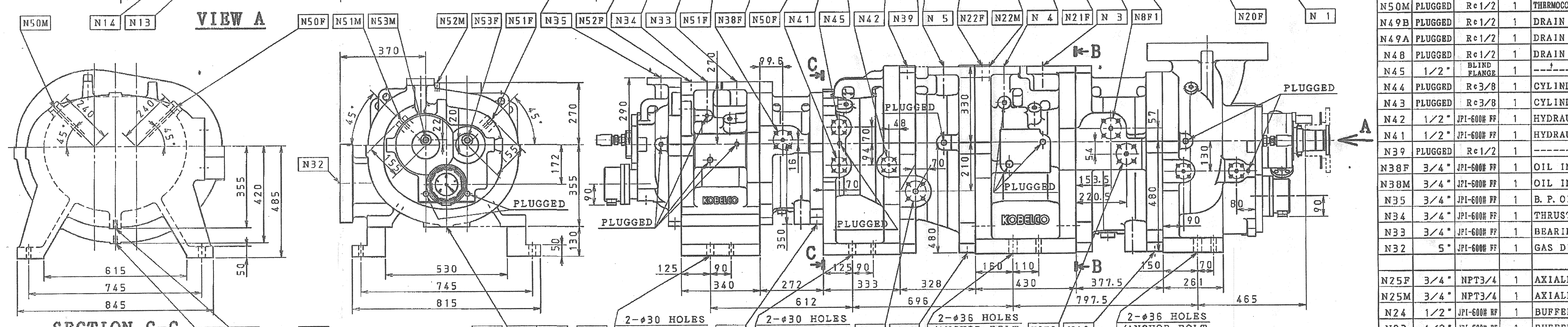
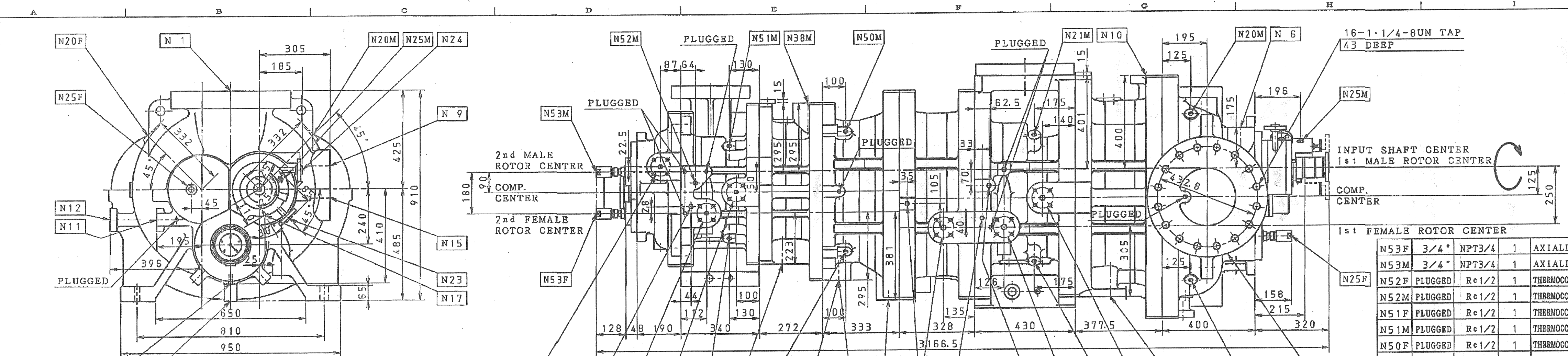
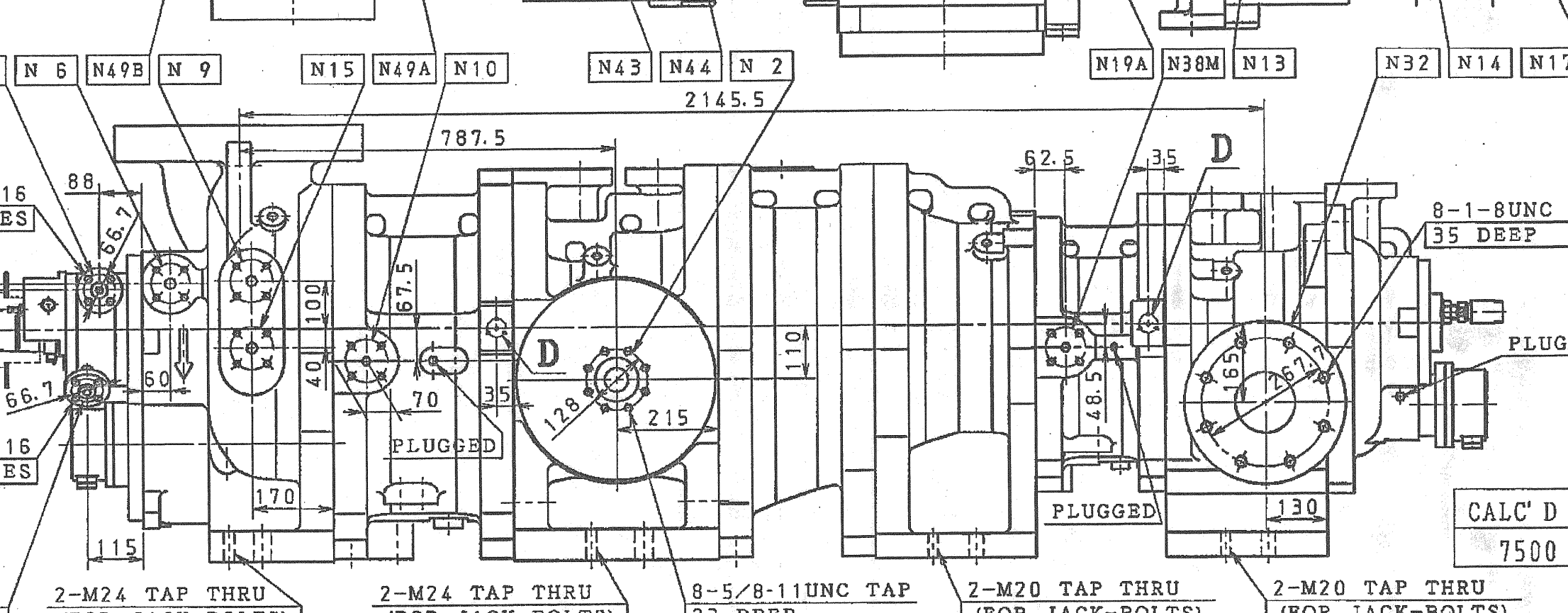
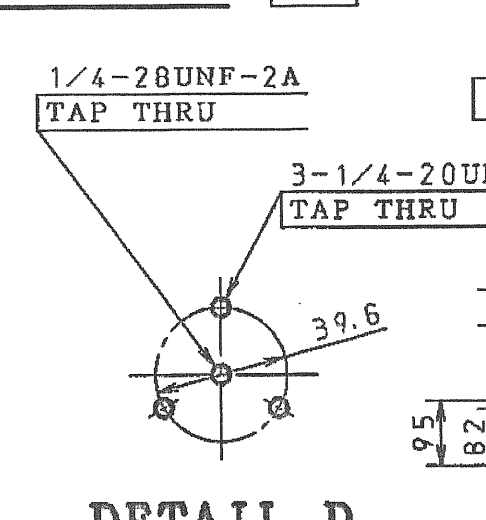
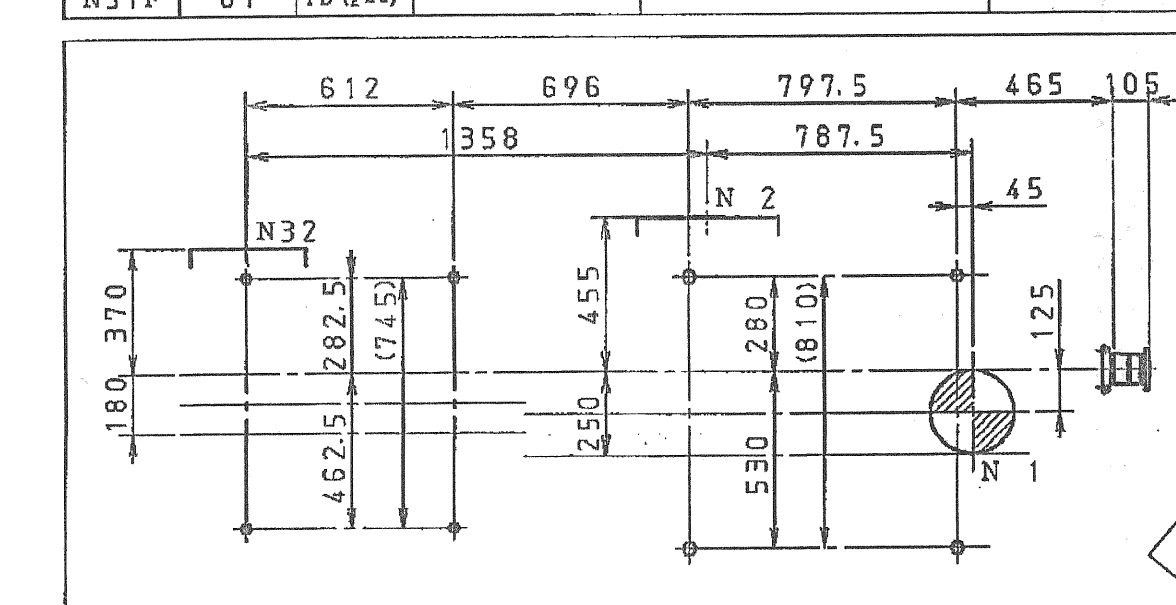


TABLE OF BEARING THERMOCOUPLES
軸受温度計寸法一覧表

JOURNAL BRG.			THRUST BRG.		
NOZZLE NO.	LENGTH	REMARKS	NOZZLE NO.	LENGTH	REMARKS
N20M	236	MS (1+1)	N22M	163	MT (1+1)
N20F	236	FS (1+1)	N22F	191	FT (1+1)
N21M	109	MD (1+1)	N52M	146	MT (2+0)
N21F	109	FD (1+1)	N52F	164	FT (2+0)
N50M	168	MS (2+0)			
N50F	168	FS (2+0)			
N51M	81	MD (2+0)			
N51F	81	FD (2+0)			



NOZZLE NO.	NOMINAL PIPE SIZE	TAP OR FLANGE RATING	NO. REQ'D	SERVICE	REMARKS
N53F	3/4"	NPT3/4	1	AXIALLY MOVEMENT (F)	軸移動計度 (F)
N53M	3/4"	NPT3/4	1	AXIALLY MOVEMENT (M)	軸移動計度 (M)
N52F	PLUGGED	Re1/2	1	THERMOCOUPLE FOR THRUST BRG. (FT)	スタスト軸受温度計度 (FT)
N52M	PLUGGED	Re1/2	1	THERMOCOUPLE FOR THRUST BRG. (MT)	スタスト軸受温度計度 (MT)
N51F	PLUGGED	Re1/2	1	THERMOCOUPLE FOR JOURNAL BRG. (FD)	軸受温度計度 (FD)
N51M	PLUGGED	Re1/2	1	THERMOCOUPLE FOR JOURNAL BRG. (MD)	軸受温度計度 (MD)
N50F	PLUGGED	Re1/2	1	THERMOCOUPLE FOR JOURNAL BRG. (FS)	軸受温度計度 (FS)
N50M	PLUGGED	Re1/2	1	THERMOCOUPLE FOR JOURNAL BRG. (MS)	軸受温度計度 (MS)
N49B	PLUGGED	Re1/2	1	DRAIN (D)	吐出側ドレン
N49A	PLUGGED	Re1/2	1	DRAIN (D)	吐出側ドレン
N48	PLUGGED	Re1/2	1	DRAIN (S)	吸込側ドレン
N45	1/2"	BLIND FLANGE	1		
N44	PLUGGED	Re3/8	1	CYLINDER DRAIN (U)	油圧シリンダードレン (U)
N43	PLUGGED	Re3/8	1	CYLINDER DRAIN (L)	油圧シリンダードレン (L)
N42	1/2"	JPI-600# FF	1	HYDRAULIC CYLINDER (U)	油圧シリンダー (U)
N41	1/2"	JPI-600# FF	1	HYDRAULIC CYLINDER (L)	油圧シリンダー (L)
N39	PLUGGED	Re1/2	1		内部注油
N38F	3/4"	JPI-600# FF	1	OIL INJECTION	内部注油
N38M	3/4"	JPI-600# FF	1	OIL INJECTION	内部注油
N35	3/4"	JPI-600# FF	1	B. F. OIL SUPPLY	バタンスピストン給油
N34	3/4"	JPI-600# FF	1	THRUST BRG. SUPPLY	スタスト軸受給油
N33	3/4"	JPI-600# FF	1	BEARING OIL SUPPLY	ラジアル軸受給油
N32	5"	JPI-600# FF	1	GAS DISCHARGE	ガス吐出
N25F	3/4"	NPT3/4	1	AXIALLY MOVEMENT (F)	軸移動計度 (F)
N25M	3/4"	NPT3/4	1	AXIALLY MOVEMENT (M)	軸移動計度 (M)
N24	1/2"	JPI-600# FF	1	BUFFER FLUID OUT	メカニカルシール排油
N23	1/2"	JPI-600# FF	1	BUFFER FLUID IN	メカニカルシール排油
N22F	PLUGGED	Re1/2	1	THERMOCOUPLE FOR THRUST BRG. (FT)	スタスト軸受温度計度 (FT)
N22M	PLUGGED	Re1/2	1	THERMOCOUPLE FOR THRUST BRG. (MT)	スタスト軸受温度計度 (MT)
N21F	PLUGGED	Re1/2	1	THERMOCOUPLE FOR JOURNAL BRG. (FD)	軸受温度計度 (FD)
N21M	PLUGGED	Re1/2	1	THERMOCOUPLE FOR JOURNAL BRG. (MD)	軸受温度計度 (MD)
N20F	PLUGGED	Re1/2	1	THERMOCOUPLE FOR JOURNAL BRG. (FS)	軸受温度計度 (FS)
N20M	PLUGGED	Re1/2	1	THERMOCOUPLE FOR JOURNAL BRG. (MS)	軸受温度計度 (MS)
N19B	PLUGGED	Re3/4	1	DRAIN (D)	吐出側ドレン
N19A	PLUGGED	Re3/4	1	DRAIN (D)	吐出側ドレン
N18	PLUGGED	Re3/4	1	DRAIN (S)	吸込側ドレン
N17	1/8"	Re1/8	1	MECH. SEAL OIL DRAIN	メカニカルシール排油
N15	1"	JPI-600# FF	1	OIL RETURN (SUCTION)	吸込側油戻し
N14	PLUGGED	Re3/8	1	CYLINDER DRAIN (U)	油圧シリンダードレン (U)
N13	PLUGGED	Re3/8	1	CYLINDER DRAIN (L)	油圧シリンダードレン (L)
N12	1/2"	JPI-600# FF	1	HYDRAULIC CYLINDER (U)	油圧シリンダー (U)
N11	1/2"	JPI-600# FF	1	HYDRAULIC CYLINDER (L)	油圧シリンダー (L)
N10	1"	JPI-600# FF	1	OIL RETURN	分岐油戻し
N9	1"	JPI-600# FF	1	ADDITIONAL OIL SUPPLY	追加注油
N8F2	1"	JPI-600# FF	1	OIL INJECTION	内部注油
N8F1	1"	JPI-600# FF	1	OIL INJECTION	内部注油
N7	1"	JPI-600# FF	1	OIL INJECTION (SV)	スタイド給油
N6	3/4"	JPI-600# FF	1	FLUSHING IN	メカニカルシール排油
N5	1"	JPI-600# FF	1	B. P. OIL SUPPLY	バタンスピストン給油
N4	1"	JPI-600# FF	1	THRUST BRG. SUPPLY	スタスト軸受給油
N3	1"	JPI-600# FF	1	BEARING OIL SUPPLY	ラジアル軸受給油
N2	2"	JPI-600# FF	1	GAS DISCHARGE	ガス吐出
N1	10"	JPI-600# FF	1	GAS SUCTION	ガス吸込

JPI-600#	1/2B	1/2	13	19	67.6	N11, N12, N41, N42, N45
JPI-600#	3/4B	5/8	11	23	83.6	N 6, N33, N34, N35, N38M, N38F
JPI-600#	1B	5/8	11	23	89.9	N 3, N 4, N 5, N 7, N8F1, N8F2, N 9, N10, N15

NOZZLE TABLE
管合一覧表

REV.	DATE	BY	CHKD.	APP'D.	REVISION
1	2005/02/11	BARUDA	Y. KAWAGUCHI	K. KAWAGUCHI	INITIAL DESIGN

NOZZLE TABLE
管合一覧表

NO.	DATE	BY	CHKD.	APP'D.	REVISION
1	2005/02/11	BARUDA	Y. KAWAGUCHI	K. KAWAGUCHI	INITIAL DESIGN

NOZZLE TABLE
管合一覧表

NO.	DATE	BY	CHKD.	APP'D.	REVISION
1	2005/02/11	BARUDA	Y. KAWAGUCHI	K. KAWAGUCHI	INITIAL DESIGN

THIS IS A CAD DRAWING NO MANUAL CHANGES ARE ALLOWED

NOTE #1 WAS MAIN BOX MAY BE ROTATED IN STEPS OF 90°

NOTE #2 WAS .15 GPM/BRG .037" DIA DRIFICE

OIL FILL LABEL ON NON-DRIVE END OF MOTOR ADDED

MAIN TERMINAL BOX RE-DESIGNED COMPLETE 1 WAS BOX SIZE FAB21 FEET ADDED.

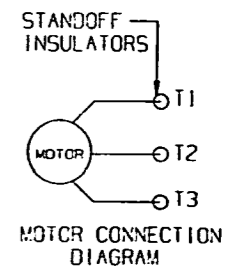
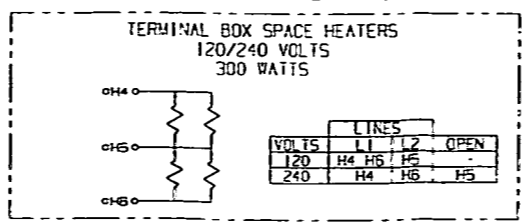
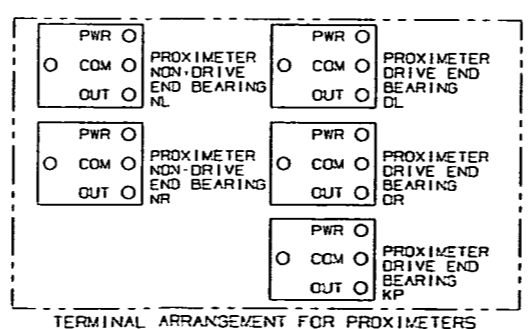
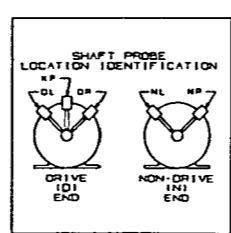
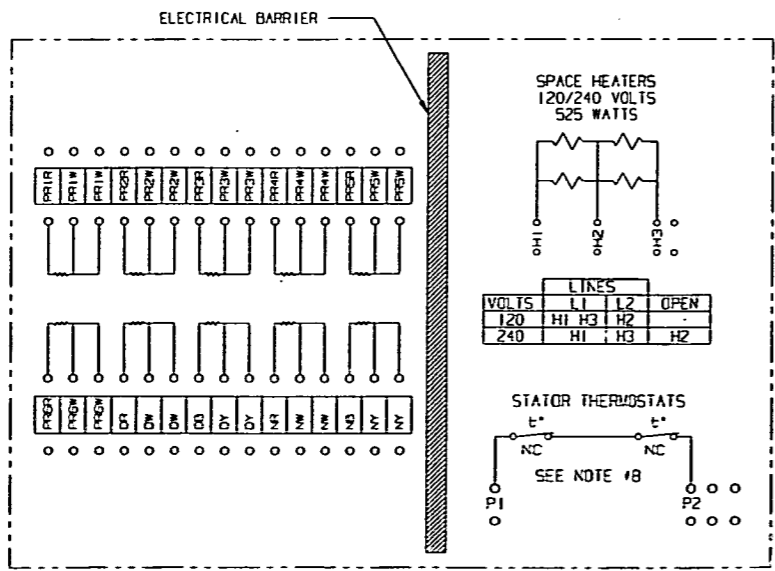
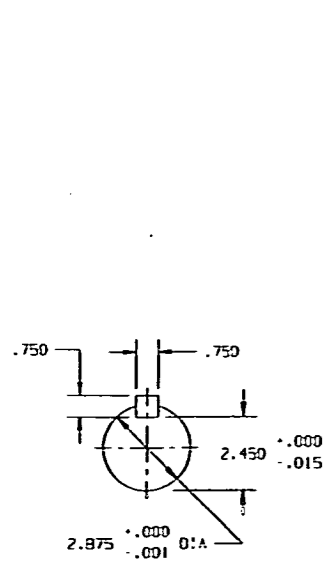
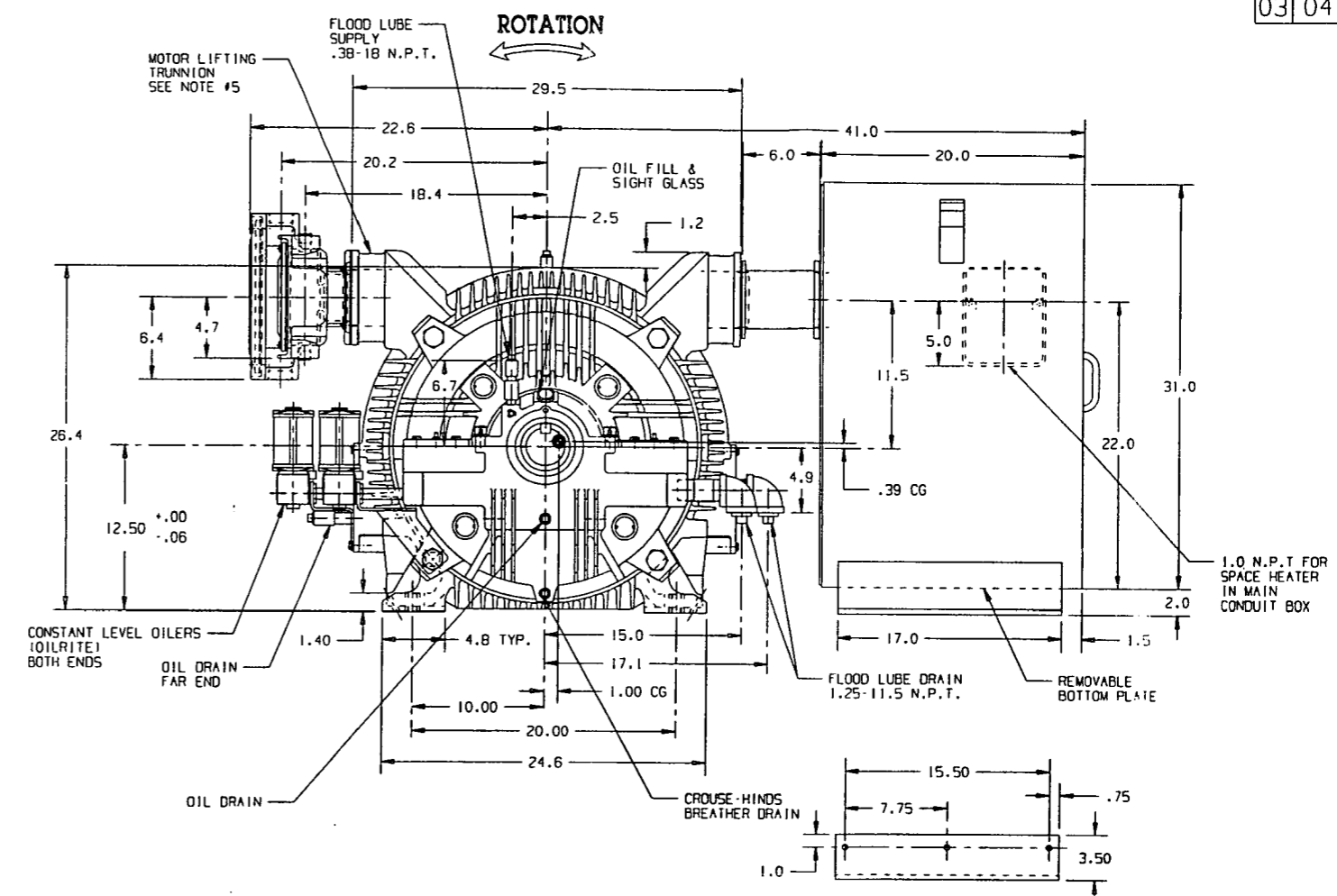
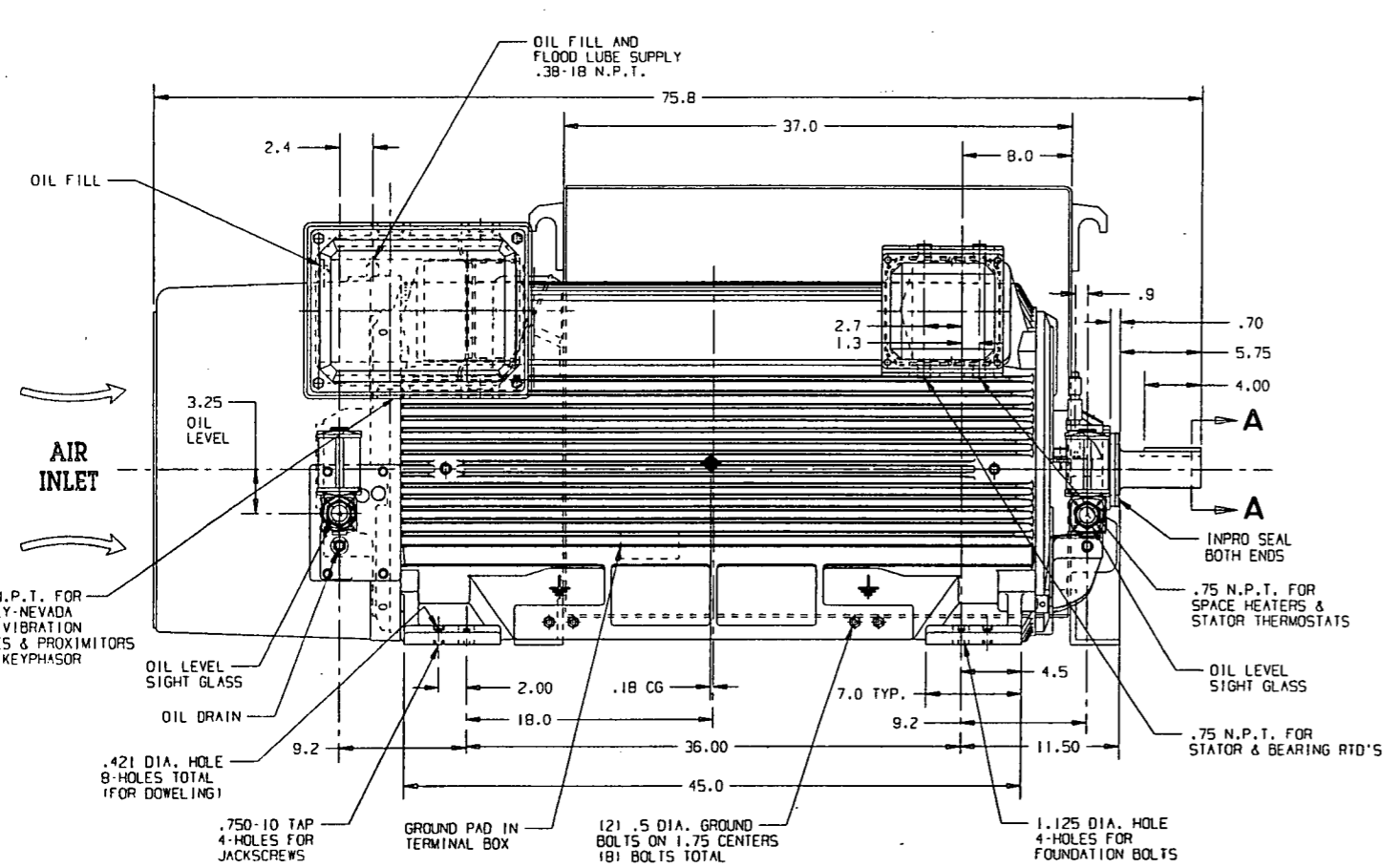
18-101 SPACE HEATER CONN. DIAG. IN MAIN TERMINAL BOX UPDATED TO DUAL VOLTAGE.

EFF. FUT. ESO

NOTES:

1. MAIN TERMINAL BOX IS FREE STANDING AND MUST BE SUPPORTED FROM BELOW BY CUSTOMER. APPROXIMATE WEIGHT OF BOX: 400 LB.
2. APPROXIMATE WEIGHT OF MOTOR: 5,150 LB. AND ROTOR 1089 LB.
3. THIS MOTOR IS SUITABLE FOR DIRECT CONNECTION ONLY.
4. THIS MOTOR IS SUITABLE FOR ROTATION IN EITHER DIRECTION.
5. WHEN LIFTING MOTOR, LIFT BY TWO DIAGONALLY OPPOSITE TRUNNIONS AT THE SAME TIME.
6. SHIMS MAY BE NECESSARY UNDER MOTOR FEET.
7. NON-DRIVE END BEARING IS INSULATED, INSULATE ANY CONNECTIONS TO THIS BEARING.
8. THE NORMALLY CLOSED THERMOSTATS IN THIS MOTOR SHOULD BE CONNECTED TO CAUSE THE STARTER TO OPEN WHEN THEIR PRESET TEMPERATURE IS REACHED. THE CONTACT RATING IS 360 VA @ 120-600 VOLTS AC.
9. FLOOD LUBRICATION DATA: .25 GPM PER BEARING AT 25 PSIG. .047 DIA. DRIFICE PROVIDED IN EACH OIL SUPPLY LINE TO REGULATE OIL FLOW.
10. CONSTANT LEVEL OILERS ARE FOR SELF LUBRICATION ONLY.

MOTOR DATA:
 ROTOR END FLOAT = .50"
 END FLOAT OF LTO END FLOAT CPLG = .19"
 OIL CAPACITY PER BEARING = 1.7 QT DRIVE END, 1.8 QT NON-DRIVE END.
 USE A HIGH QUALITY TURBINE OIL HAVING A VISCOSITY OF 300 TO 350 SUS @ 100°F (150 VG 68)
 FOR ALIGNMENT REQUIREMENTS SEE THE INSTRUCTION BOOK.



SIEMENS
 CERTIFIED PRINT
 CUSTOMER DETAIL CHANGES MAY AFFECT PRICE AND DELIVERY. PRODUCTION WILL PROCEED ON THE BASIS OF THIS DRAWING.

CUSTOMER: ENGINEERING DESIGNS TRANSFER
 P.O. # 1003-ES-323
 EQ. # E17880-01

HP	RPM	Frame	Type	Volts	Pb	Hr
453	1800	50115	CZ	480	3	60

E17880-01
 CONFIDENTIAL - PROPERTY OF Siemens Energy & Automation, Inc.
 POWER CONVERSION DIVISION
 NORWOOD PLANT

OUTLINE

STANDARD SHAFT EXTENSION 2.875 X 5.75 4-POLE SLV BRG

DR RGS 1-13-05	72-117-880-011	CZ 50115
SCALE .15	SHEET 1 of 1	ISSUE 03

72-117-880-011

72-117-880-011

