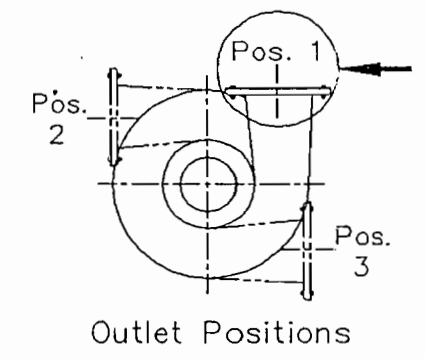
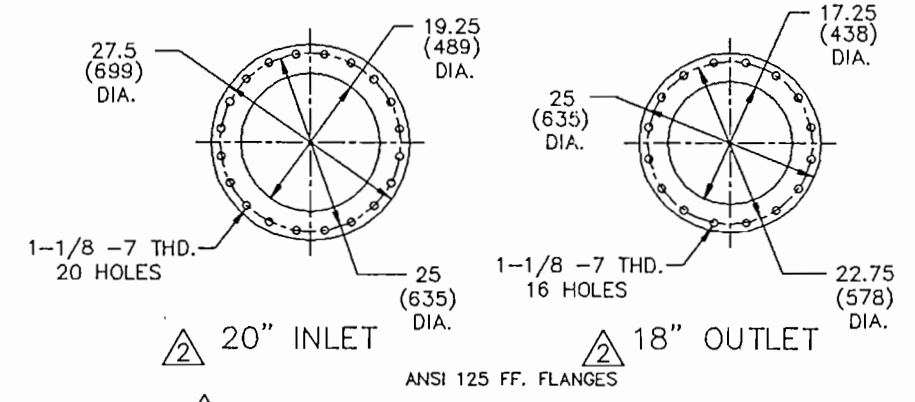
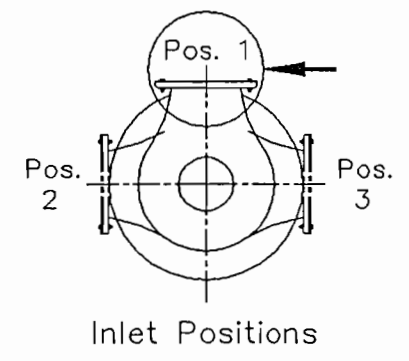
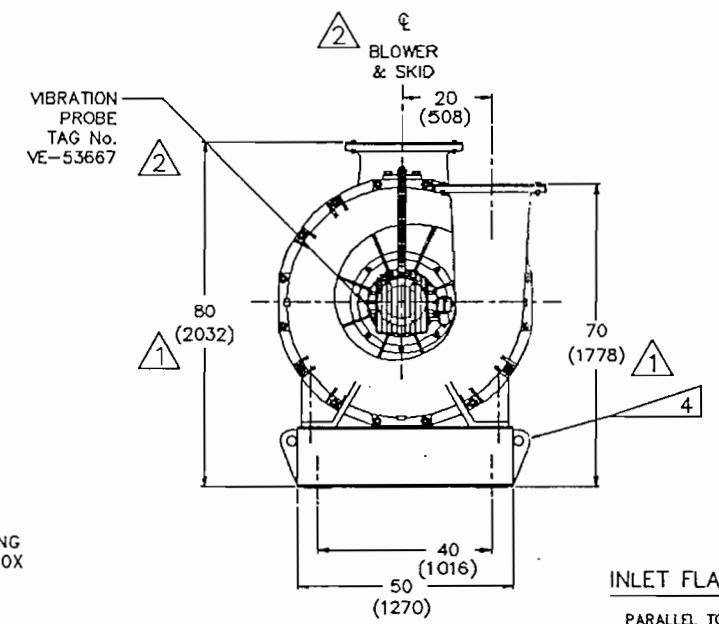
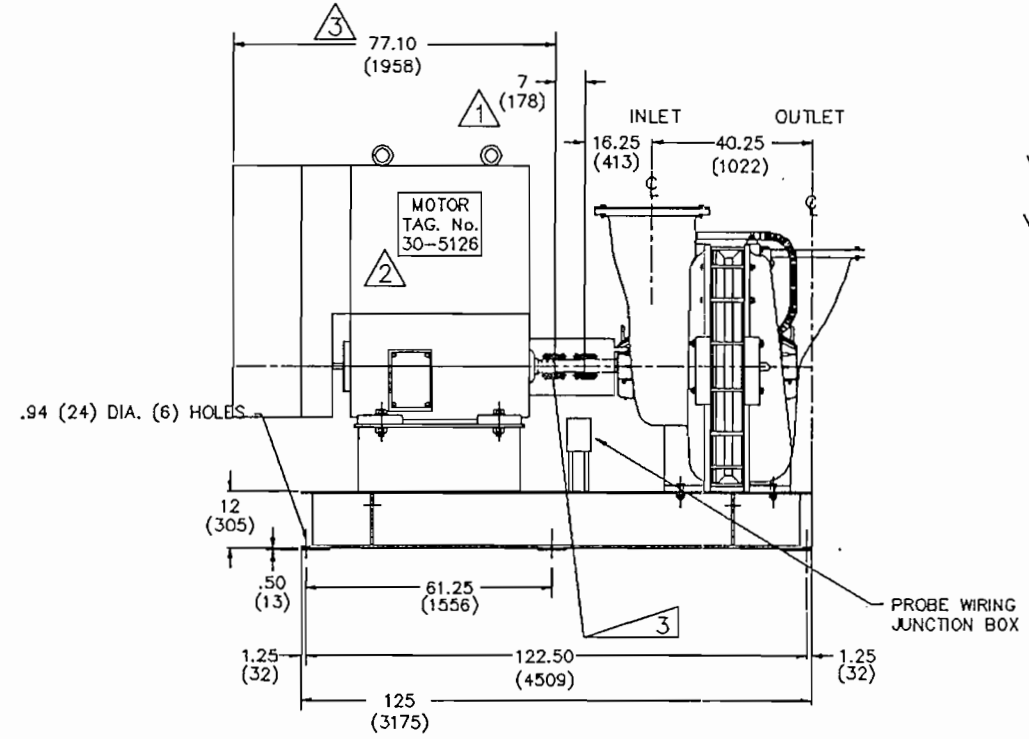
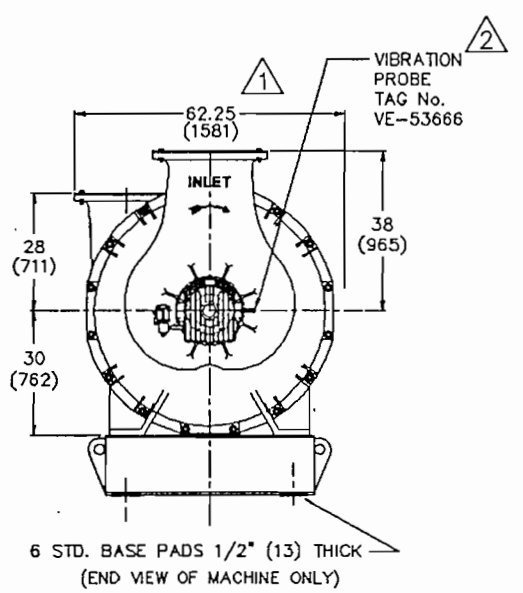


REV	CHANGE DESCRIPTION	ECH/NO.	NAME/DATE	CHK'D	REL. DATE
0	RELEASE				
1	CHANGED DWG. TO SHOW CORRECT DIMS. & PAD LOADINGS		HWW 10/25/94		
2	PER CUSTOMER		DFS 12/6/94		
3	"C" DIM. OF MTR CHANGED TO 77.10 WAS 61.30	62522	HWW 7/10/95		



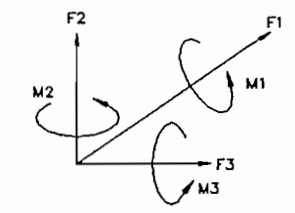
LOAD PER PAD  
MOTOR END

1709.25 LB. (775.30Kg)	1709.25 LB. (775.30Kg)
3163.25 (1434.82Kg)	3163.25 LB. (1434.82Kg)



LOAD PER PAD  
BLOWER END

1671 LB. (757.95Kg)	1936 LB. (878.15Kg)
------------------------	------------------------



INLET FLANGE	FORCE: LB/KG	MOMENT: FT.LB./ Nm
PARALLEL TO SHAFT	F1 = +/- 420/191	F1 = +/- 1250/1695
VERTICLE TO SHAFT	F2 = +/- 910/413	F2 = +/- 610/827
HORIZ., 90 TO SHAFT	F3 = +/- 540/245	F3 = +/- 1250/1695
<b>OUTLET FLANGE</b>		
PARALLEL TO SHAFT	F1 = +/- 490/222	F1 = +/- 1250/1695
VERTICLE TO SHAFT	F2 = +/- 450/204	F2 = +/- 610/827
HORIZ., 90 TO SHAFT	F3 = +/- 630/286	F3 = +/- 1250/1695

- NOTES:
- METRIC DIMENSIONS SHOWN IN PARENTHESES.
  - INLET & OUTLET POSITION 1 STANDARD.
  - METASTREAM COUPLING WITH 7" SPACER.
  - BASE WITH LIFTING LUGS.
  - DO NOT BOLT DOWN. IF STUDS ARE USED TO POSITION THE MACHINE, DO NOT FASTEN DOWN WITH NUTS. NEVER GROUT BASE IN CONCRETE. SEE INSTALLATION INSTRUCTIONS FOR ADDITIONAL DETAILS.
  - BENTLY NEVADA 330525 PROBE, ONE PER BEARING HOUSING.
  - SIEMENS 350HP, 509US FRAME MOTOR - MOTOR TAG No. 30-5126.
  - ELECTRICAL AREA CLASSIFICATION IS CLASS I, GROUP C&D, DIV. 2.

WEIGHTS:

MOTOR	4500 LB. (2041.16Kg)
BLOWER	5730 LB. (2599Kg)
BASE	2226 LB. (1009.69Kg)
MTR PED	853 LB. (386.91Kg)
CPLG.	43 LB. (19.50Kg)
<b>TOTAL</b>	<b>13352 LB. (6056.33Kg)</b>
<b>BLOWER ROTOR WEIGHT</b>	<b>537 LB. (243.80Kg)</b>

CLIENT: PSPC  
 LOCATION: PASADENA, TEXAS  
 (FULL) ITEM NUMBER: PS-2001-220000-05-5001  
 REQUISITION NUMBER: 6014-02D1-J210-02  
 JOB ASSIGNMENT NUMBER: JA-46-9098  
 WTT NUMBER: WTT05000501  
 LAMSON S.O. NUMBER: 64674

GEOMETRIC CHARACTERISTIC SYMBOLS / ANGULARITY O CONCENTRICITY □ FLATNESS ⊥ PERPENDICULARITY // PARALLELISM	ROUNDTNESS / RUNOUT - STRAIGHTNESS + SYMMETRY * TRUE POSITION	TOLERANCES: UNLESS OTHERWISE NOTED NON-DECIMAL ± 1/16 DECIMAL: .XX ±.03, .XXX ±.010 ANGLES ± 1°	SCALE: 0=0 DRAWN: HWW CHECKED: APPROVED: DATE: 10/21/94
DIMENSIONS IN INCHES UNLESS OTHERWISE NOTED <b>CAST BLOWERS &amp; EXHAUSTERS          2000 SERIES</b>			<p><b>LAMSON</b> corporation Dynamic Innovation Since 1980</p>
2002 APPROVAL DWG			