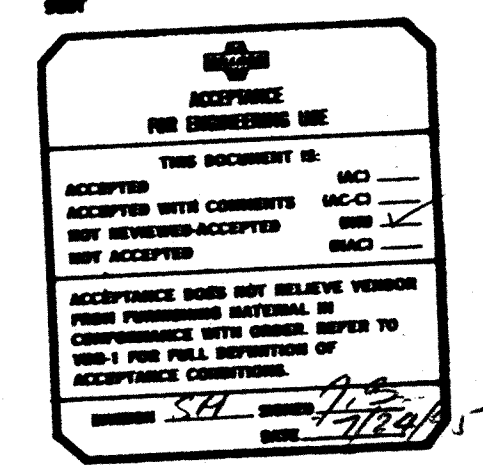


- NOTES:
1. ALL WELDS TO BE SMOOTH AND FREE OF PITS AND CREVICES.
 2. ALL CORNERS TO BE 90° (UNLESS SHOWN OTHERWISE).
 3. ALL BURRS AND SHARP EDGES TO BE REMOVED.
 4. FINISH: INSIDE - ALL SURFACES 12-20 RMS
OUTSIDE - #2B MILL



1014-02D1-V390-01 Rev. # 95-5074

SEQ NO	QTY	ITEM NUMBER	DESCRIPTION	DRAWING REF.
21	1	-	PLATE .25 THK.	SST304
21	1	-	CHANNEL 2"X1"X.25 THK.	SST304
20	1	-	CHANNEL 2"X1"X.25 THK.	SST304
19	2	-	FLAT 2"X.25 THK.	SST304
18	2	-	FLAT 2"X.25 THK.	SST304
17	2	-	ANGLE 2"X2.5 THK.	SST304
16	2	-	FLAT 2"X.25 THK.	SST304
15	2	-	FLAT 2"X.25 THK.	SST304
14	2	-	ANGLE 2"X2.5 THK.	SST304
13	1	-	PLATE .38 THK.	SST304
12	1	-	PLATE .25 THK.	SST304
11	14	-	LATCH HOLD-DOWN DE-STAC-10 MODEL 202-SS	SST
10	1	-	DOWEL PIN M8X25 LG.	SST304
9	1	-	CHANNEL 2"X1"X.25 THK.	SST304
8	1	-	CHANNEL 2"X1"X.25 THK.	SST304
7	4	-	PLATE .19 THK.	SST304
6	4	-	PLATE .19 THK.	SST304
5	1	-	SHEET 11 GA.	SST304
4	1	-	SHEET 8 GA.	SST304
3	1	-	ANGLE 2" X 2" X .19 THK.	SST304
2	1	-	SHEET 12 GA.	SST304
1	1	-	SHEET 12 GA.	SST304

COPIED FROM:	REPLACES:	REPLACED BY:
R: PROJ. NO. DATE DWN/CHK/APD	D: EST1209 950622 DLL DLT TGM	TOLERANCES: FINE MEDIUM VERY COARSE
A: EST1209 941103		
B: EST1209 950301		
C: EST1209 950412	AC L/D TGM	PER K-TRON PROC. 10051-PPC

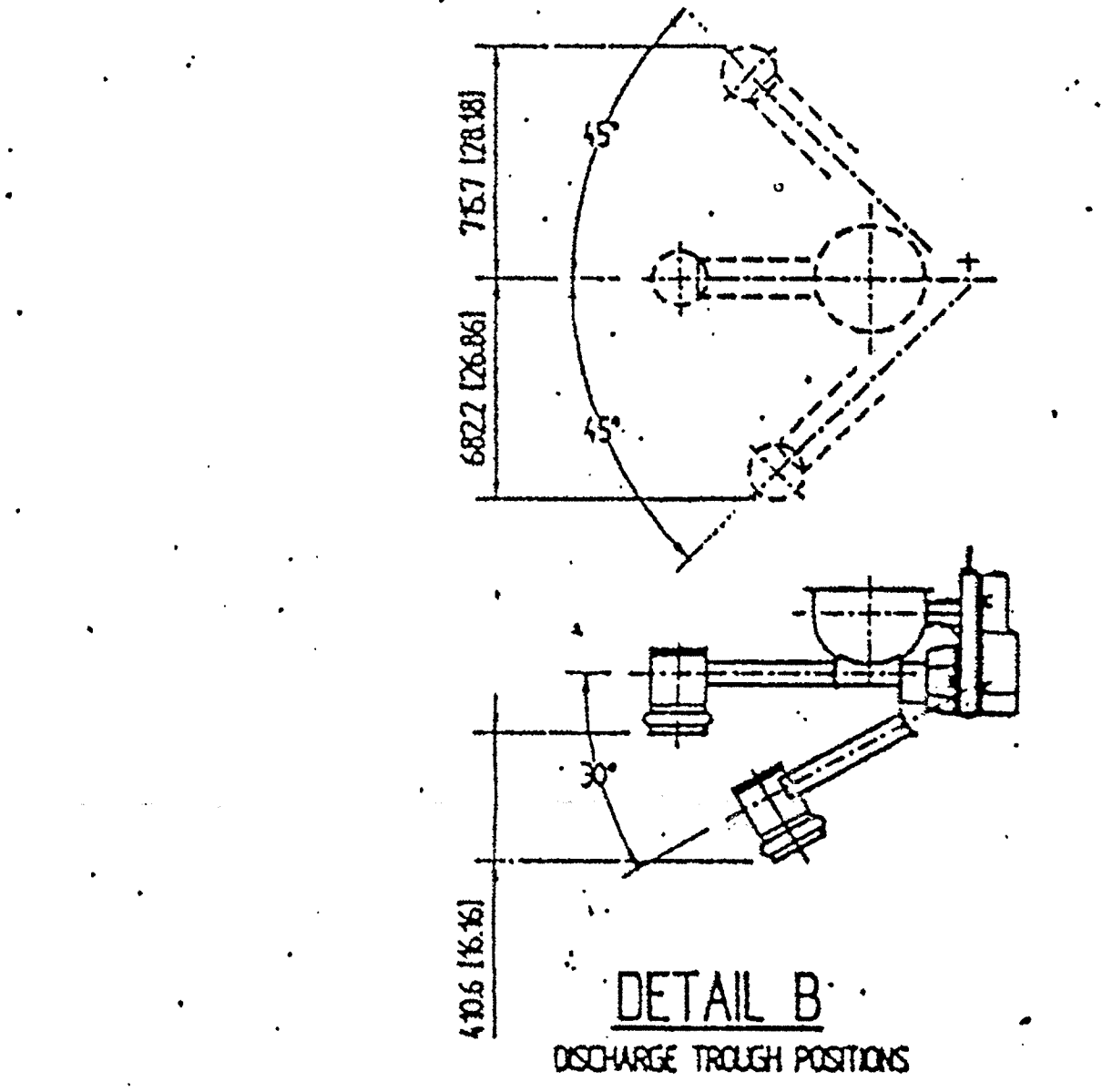
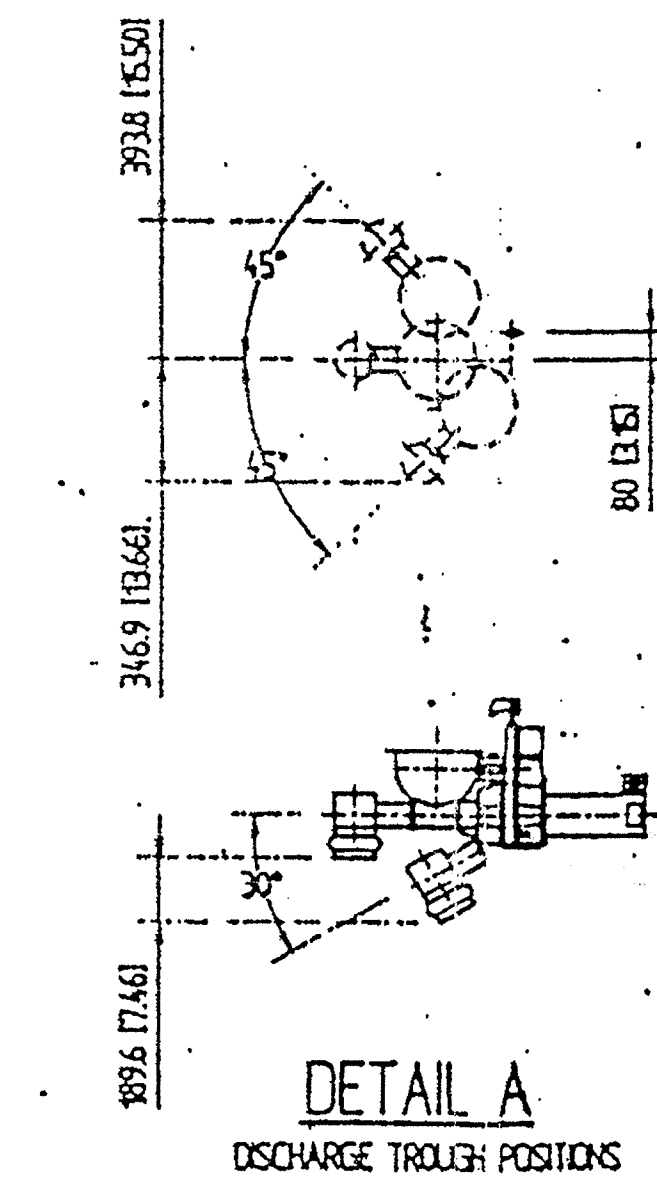
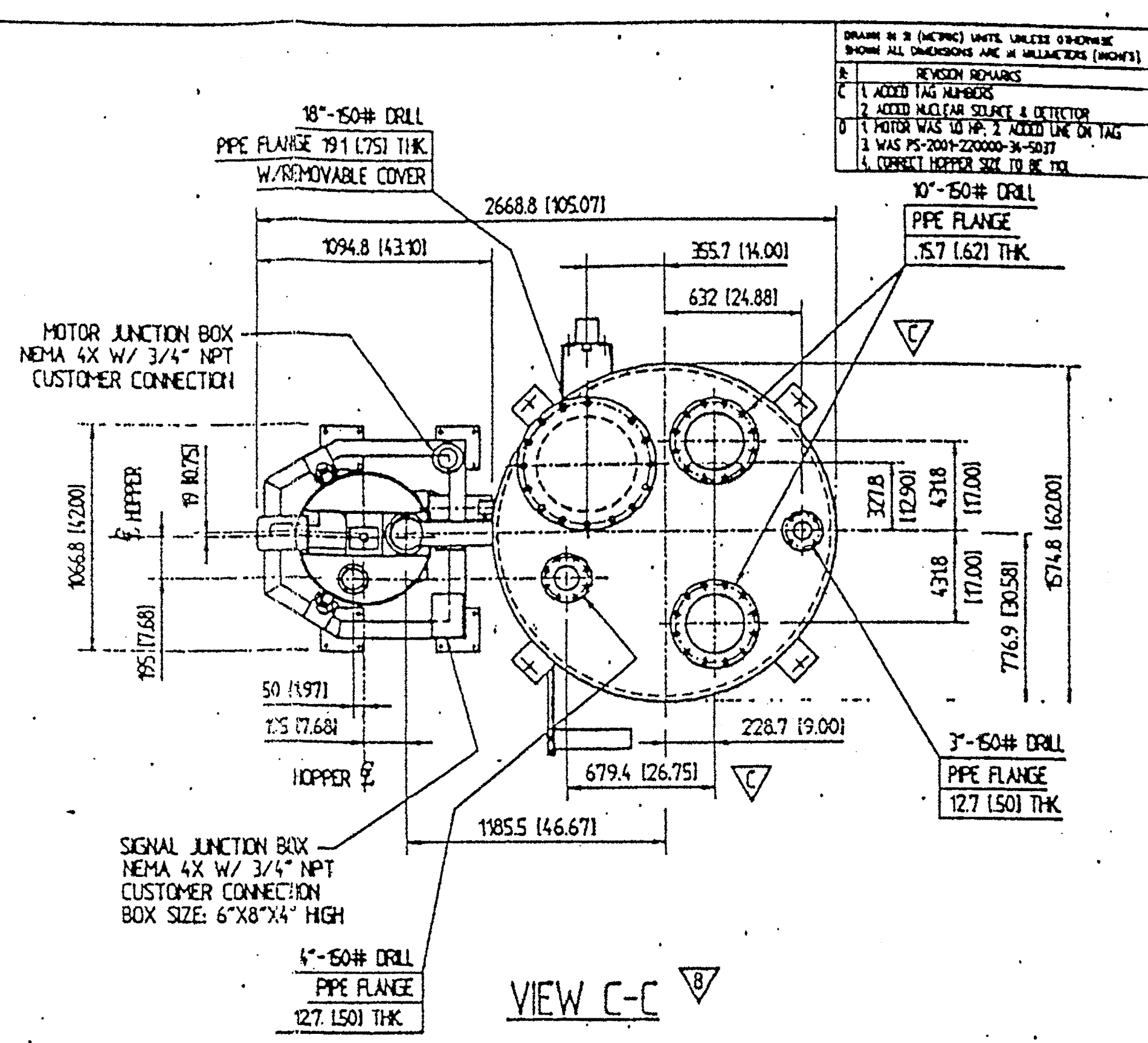
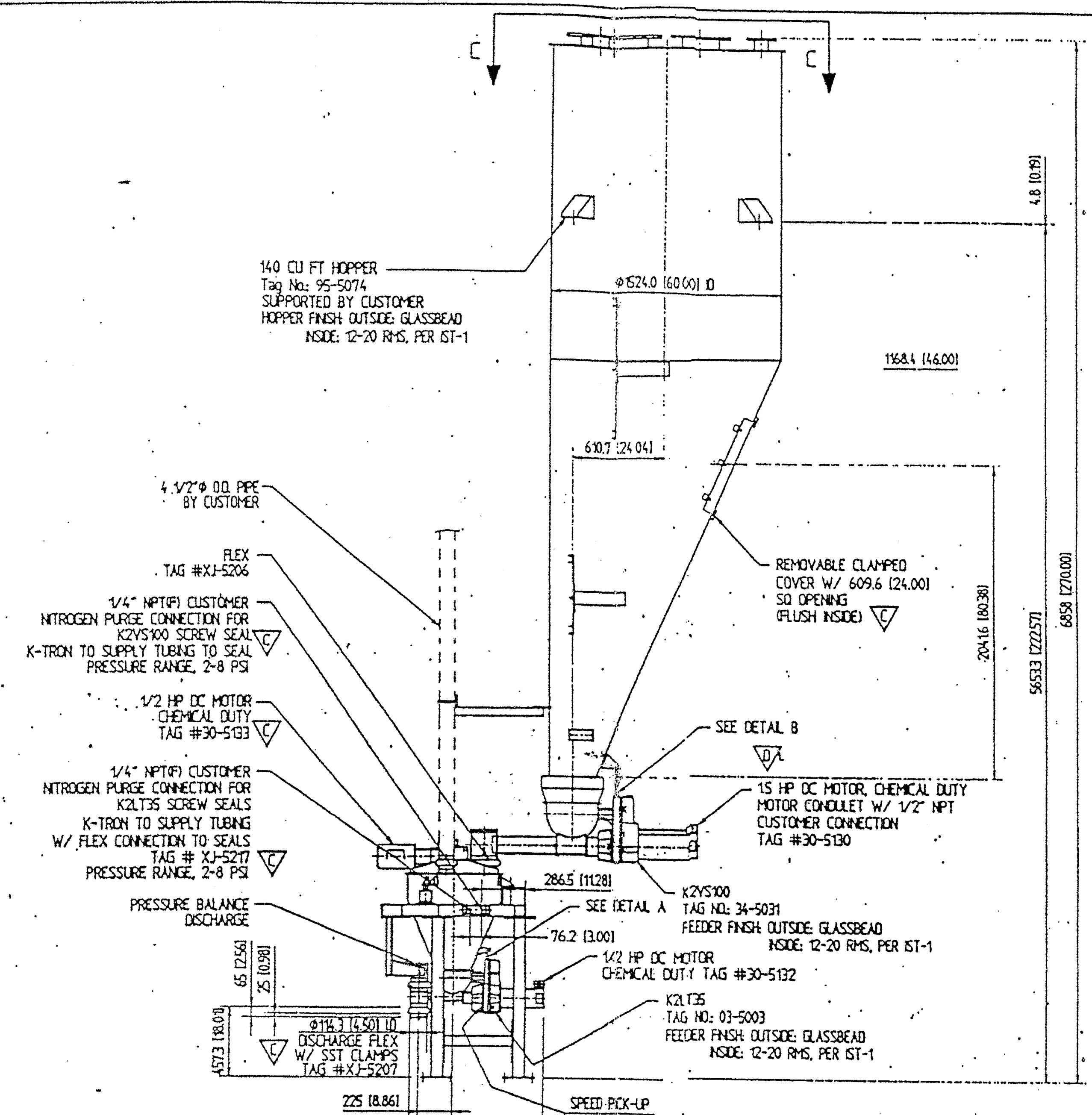
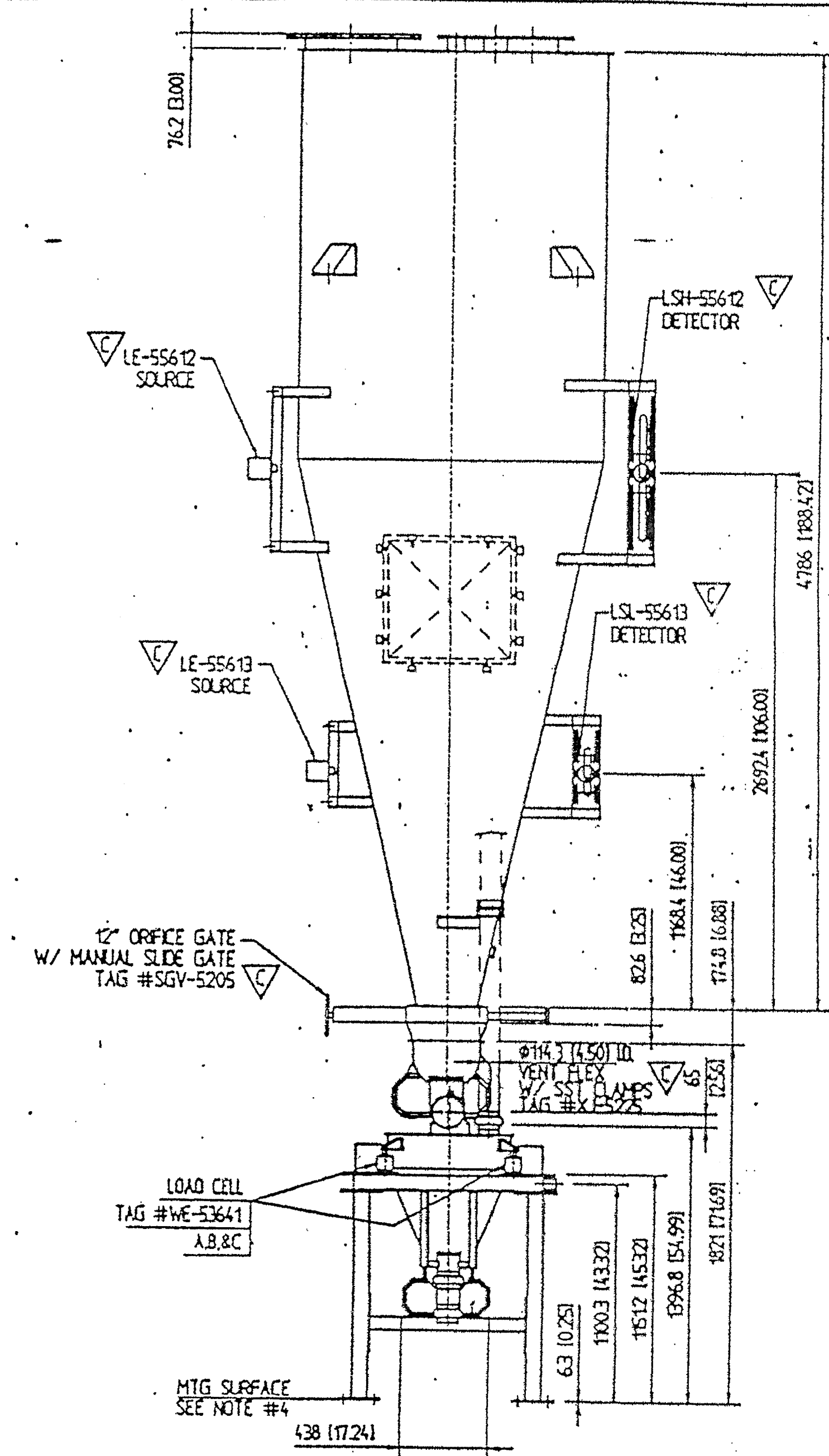
K2V5100
HOPPER ASYM 3965L (140CF)
W/24" SQ ACCESS, (2) 2"-50# FLG, (4) MOUNTING BRACKETS

SCALE	DRAWN	DLL	94-11-03
1:10	CHECK	DLL	94-11-03
	APPD	TGM	95-01-31
	FILE NO	02090050	
	WEIGHT	KG	LB

K-TRON NORTH AMERICA
ROUTES 55 & 553
PITMAN, NJ 08071 USA

D 13209005 R D

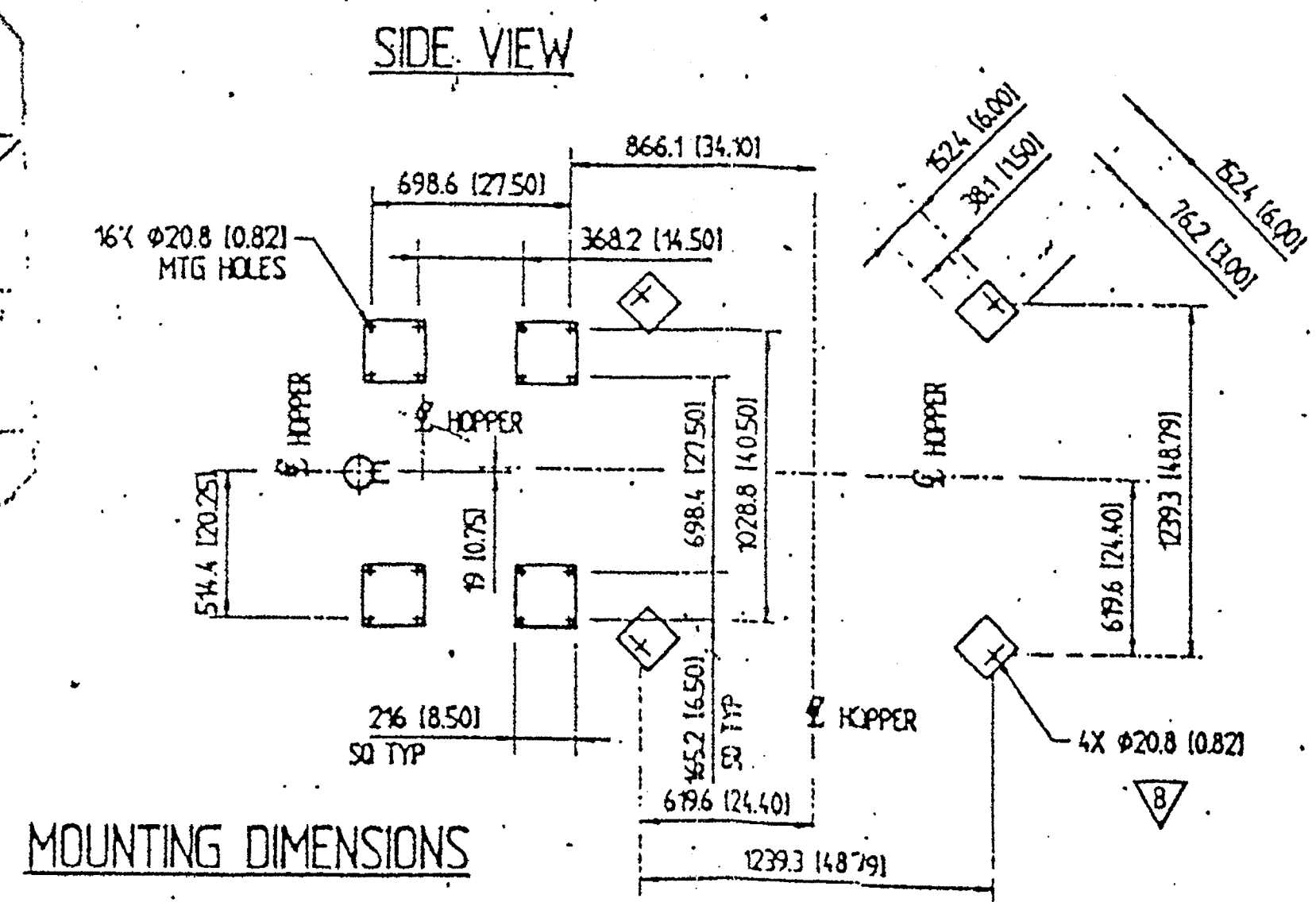
REV	REVISION
A	ISSUED FOR FABRICATION
B	REVISIONS
C	1. ADD TAG NUMBERS
D	2. ADD NUCLEAR SEAL & DETECTOR
E	3. MOTOR WAS TO BE 2. ADD LINE ON TAG
F	4. WAS PS-2001-220000-34-5031
G	5. CORRECT HOPPER SIZE TO BE 120



- NOTES:
- ALL DIMENSIONS ARE SHOWN IN MILLIMETERS (INCHES)
 - RECOMMENDED 630 (24) CLEARANCE ON ALL SIDES OF MACHINE FOR MAINTENANCE
 - STANDARD ARRANGEMENT FOR GENERAL PURPOSE AND DIVISION 2, CLASS 1, GROUPS F & G APPLICATIONS.
 - MOUNTING SURFACE TO BE RIGID & FLAT WITHIN 0.5% ($\approx 0.3"$)

ALTERNATIVE FOR DISCHARGE POSITION

304.125 114
107.95



APPROX. WEIGHT
W/O PRODUCT: 713 KG. (1570 LBS.)
W/ PRODUCT: 2772 KG. (6110 LBS.)

ITEM NUMBER	WTT NUMBER
PS-2001-220000-03-5003	03000077
PS-2001-220000-30-5132	30002662
PS-2001-220000-30-5133	30002663
PS-2001-220000-34-5031	34000757
PS-2001-220000-30-5130	30002720
PS-2001-220000-95-5074	95002054

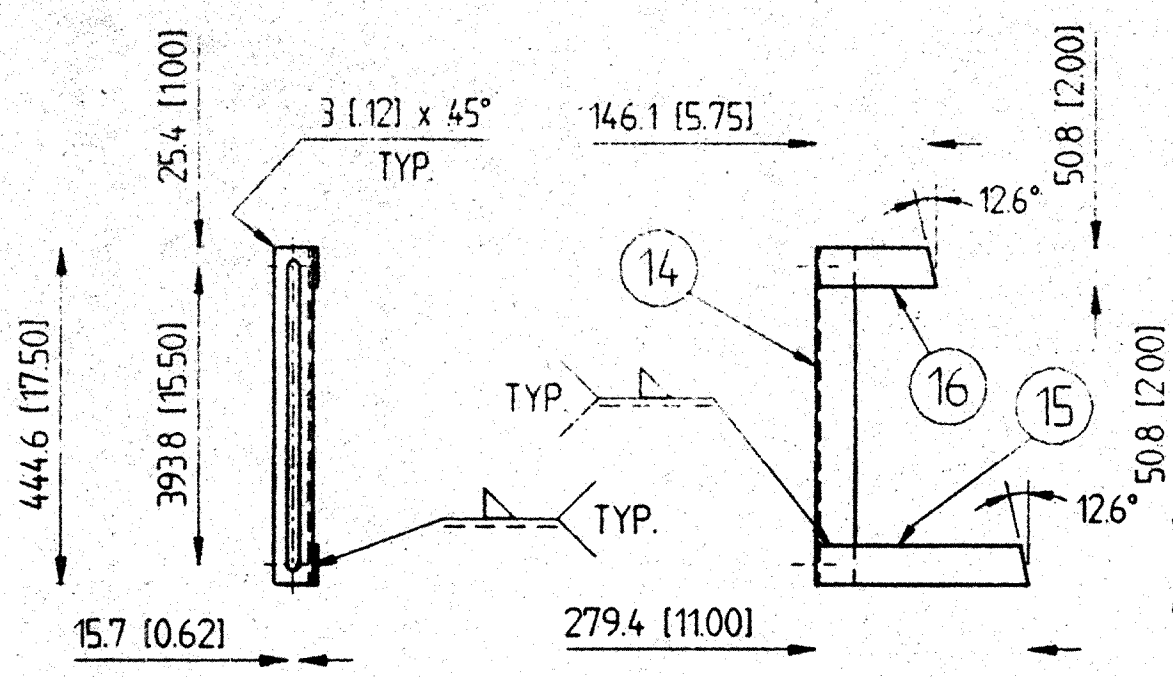
P.O. No: 6014-0201-V390-01
K-Tron Project No: S13209
Feed Rate: 18-370 LBS/HR
Material: VARIOUS POWDERS
A-ADDITIVES
TAGS# PS-2001-220000-03-5003, 34-5031, 95-5074

CERTIFIED
K-Tron North America
ENGINEERING DEPT.

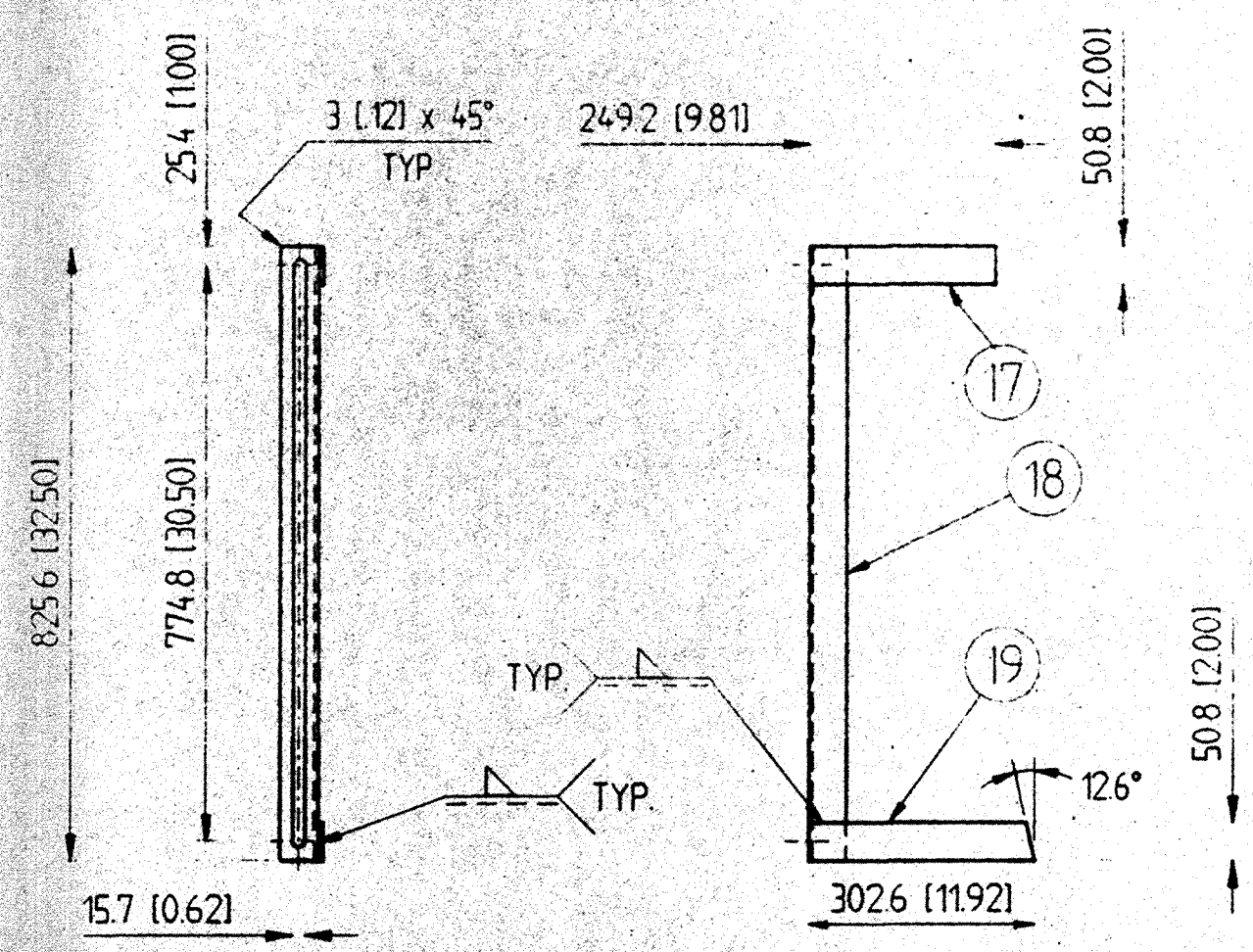
COPIED FROM:	REPLACES:	REPLACED BY:
RE: PROJ NO DATE DWG NO REV APPD BY DISC'D BY	RE: PROJ NO DATE DWG NO REV APPD BY DISC'D BY	RE: PROJ NO DATE DWG NO REV APPD BY DISC'D BY
A 105100 10/29/00		
B 105100 11/12/00		
C 105100 12/06/00		

SCALE: 1:20
DIMENSIONAL OUTLINE
K-TRON NORTH AMERICA
ROUTES 55 & 553
PITMAN, NJ 08071 USA

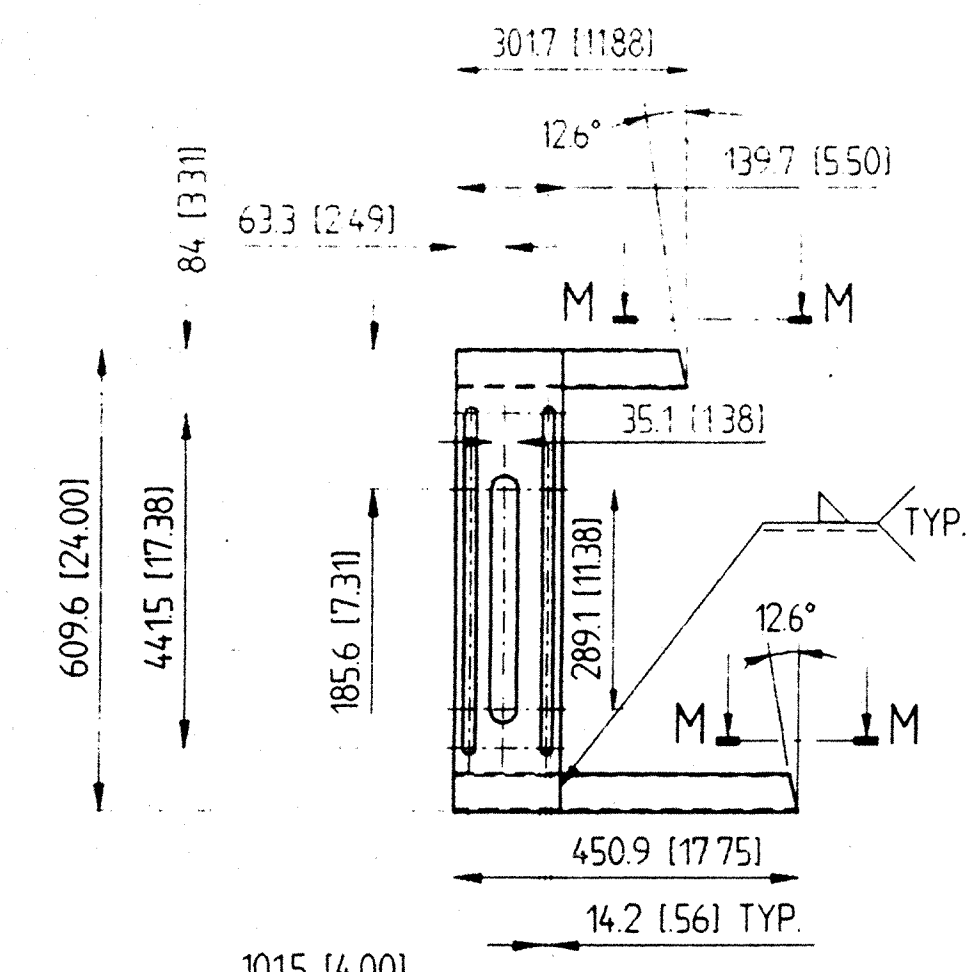
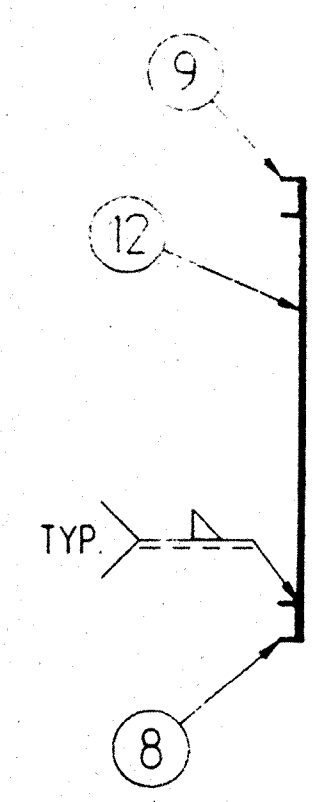
THE INFORMATION HEREON IS THE PROPERTY OF K-TRON NORTH AMERICA, INC. AND IS TO BE KEPT IN CONFIDENCE BY THE RECIPIENT. IT IS TO BE USED ONLY FOR THE PURPOSES AUTHORIZED BY K-TRON NORTH AMERICA, INC. IN WRITING.



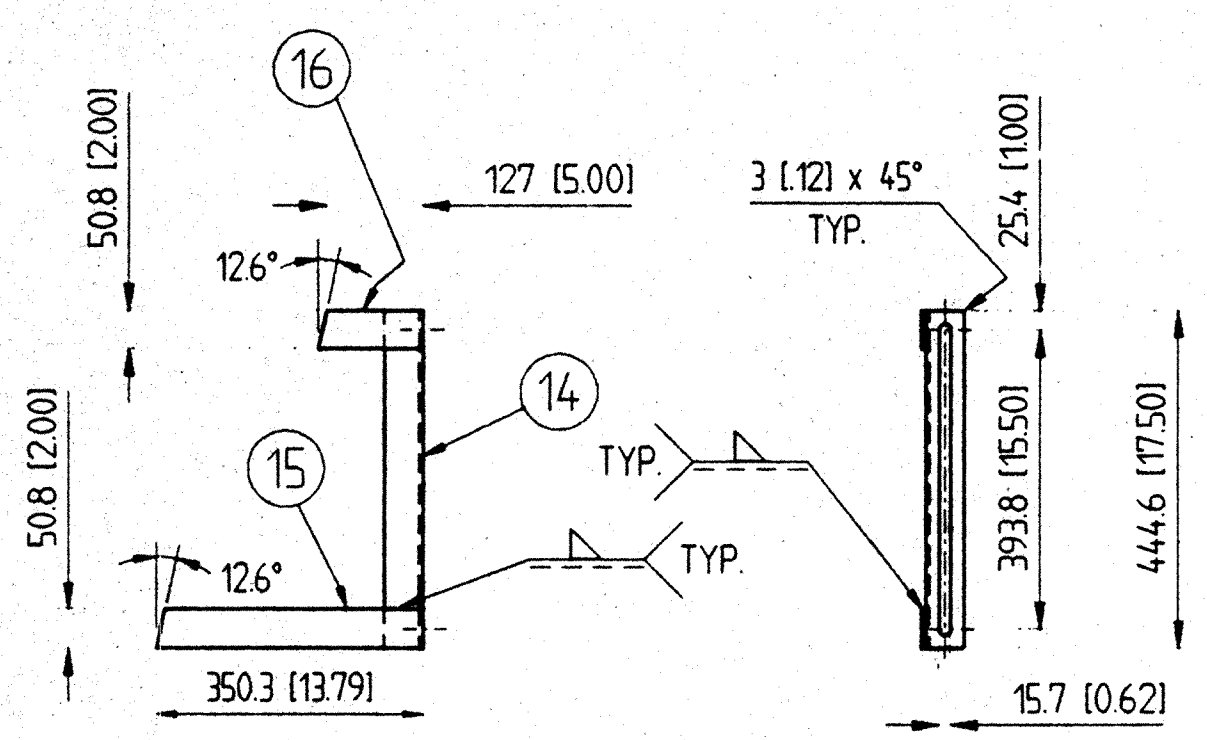
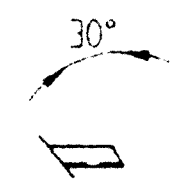
DETAIL Y



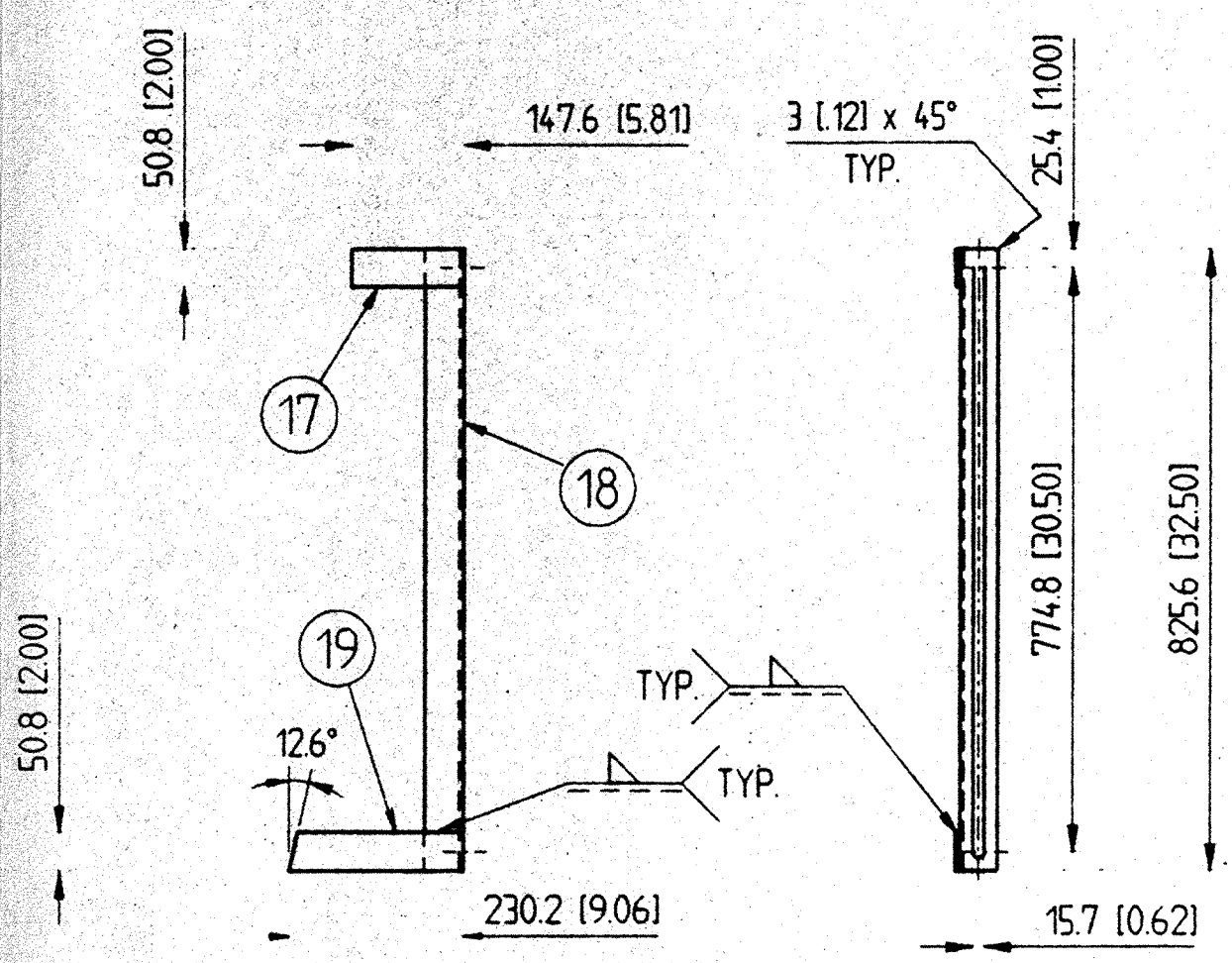
DETAIL R



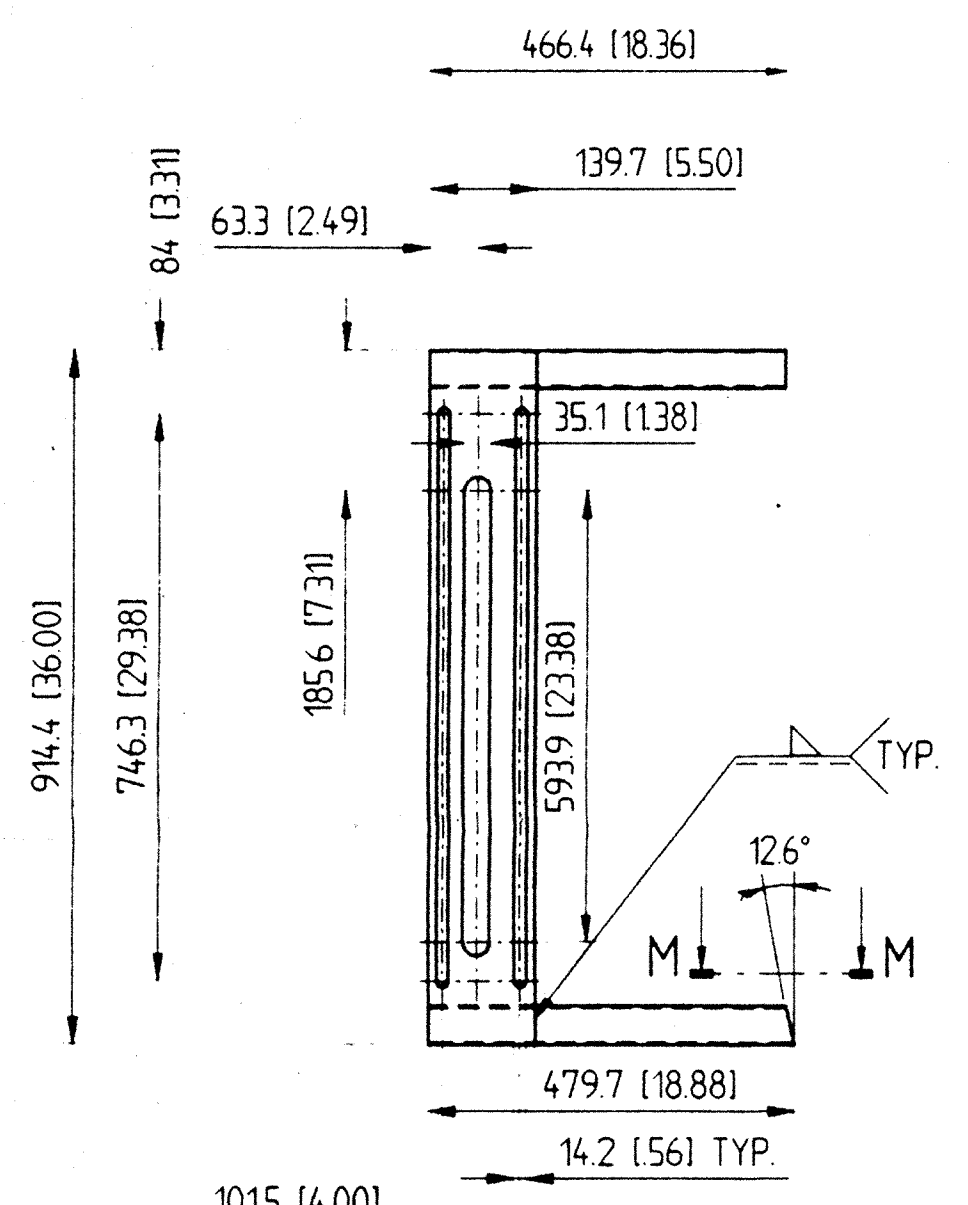
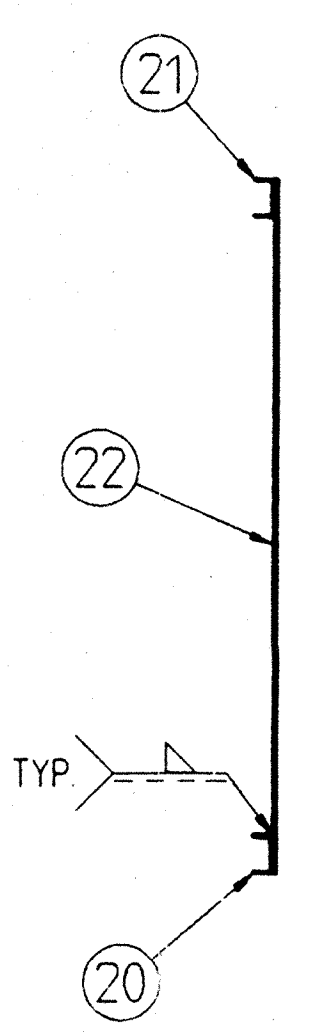
SECTION M-M



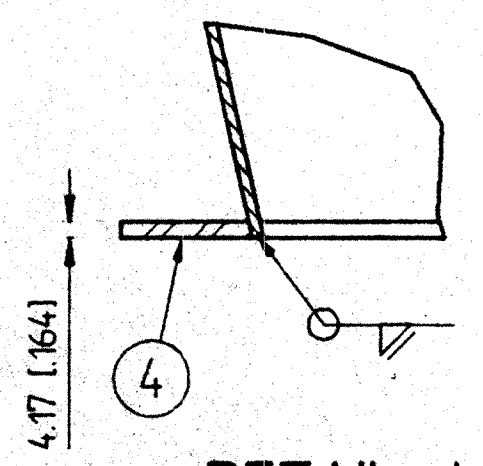
DETAIL X



DETAIL S

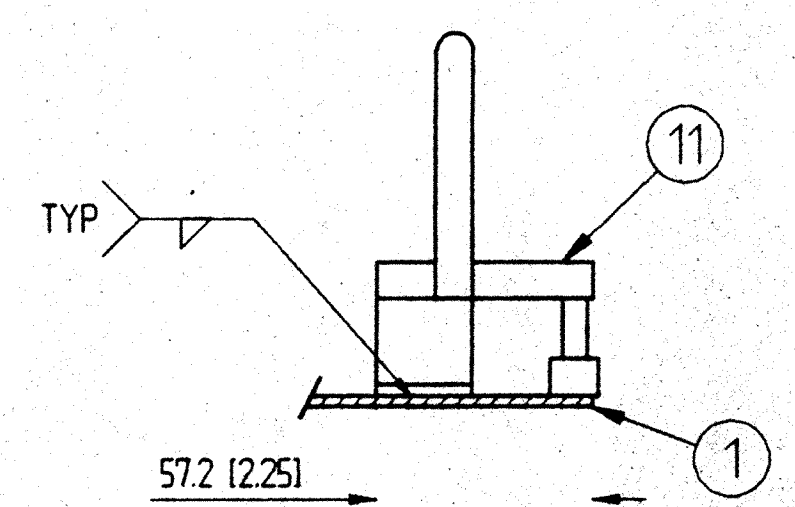


SECTION M-M



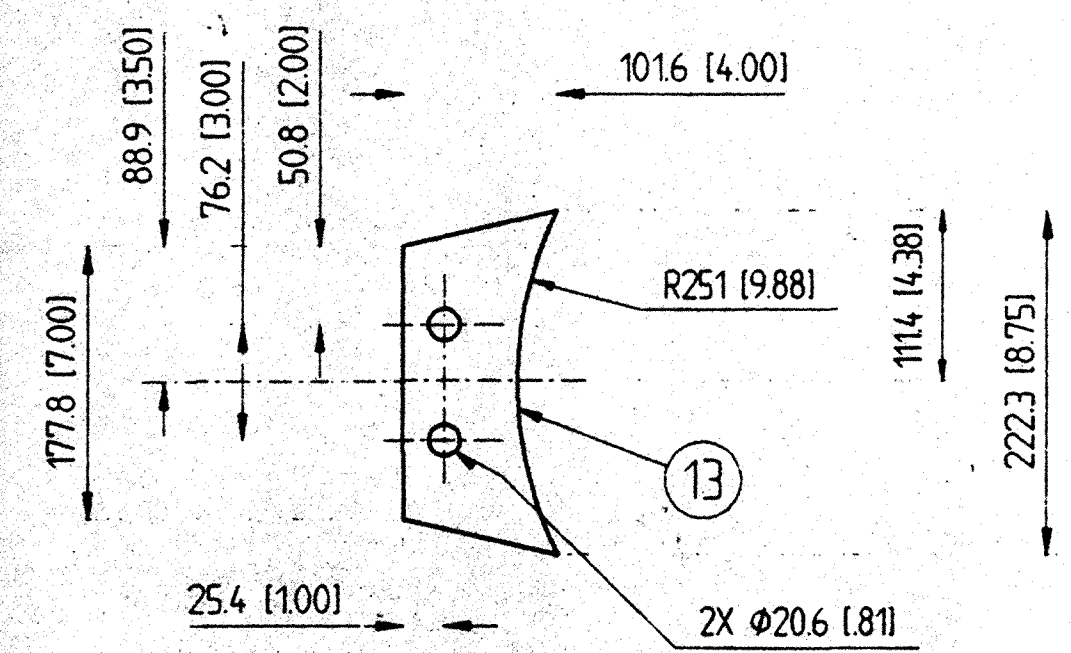
DETAIL J

SCALE 1:2



SECTION A-A

14x
SCALE 1:2



DETAIL P



6014-0201-V390-01 16cm 95-5074

SEQ NO	QTY	ITEM NUMBER	DESCRIPTION	DRAWING REF.
COPIED FROM:				
R		PROJ NO	DATE	DOWN
A		ES13209	94103	
B		ES13209	950616	ELL DLT TGM
C		ES13209	950412	AC LD TGM
REPLACES:				
D		ES13209	950622	DLI DLT TGM
REPLACED BY:				
TOLERANCES:				
			<input type="checkbox"/> FINE	<input checked="" type="checkbox"/> MEDIUM
			<input type="checkbox"/> VERY COARSE	<input type="checkbox"/> COARSE
PER K-TRON PROC 10051-PPC				
SCALE: DRAWN: DLT 94-11-03				
CHECK: DLT 94-11-03				
APPD:				
KZVS100				
HOPPER ASYM 396SL (140CF)				
W/24" SQ ACCESS, (2) 2"-50# FLG, (4) MOUNTING BRACKETS				
FILE NO: 02090050				
THRO ANGLE WEIGHT: KG (LB)				
LANGUAGE: E SHEET 4 OF 4				
K-TRON NORTH AMERICA ROUTES 55 & 553 PITMAN, NJ 08071 USA				D 13209005 R D