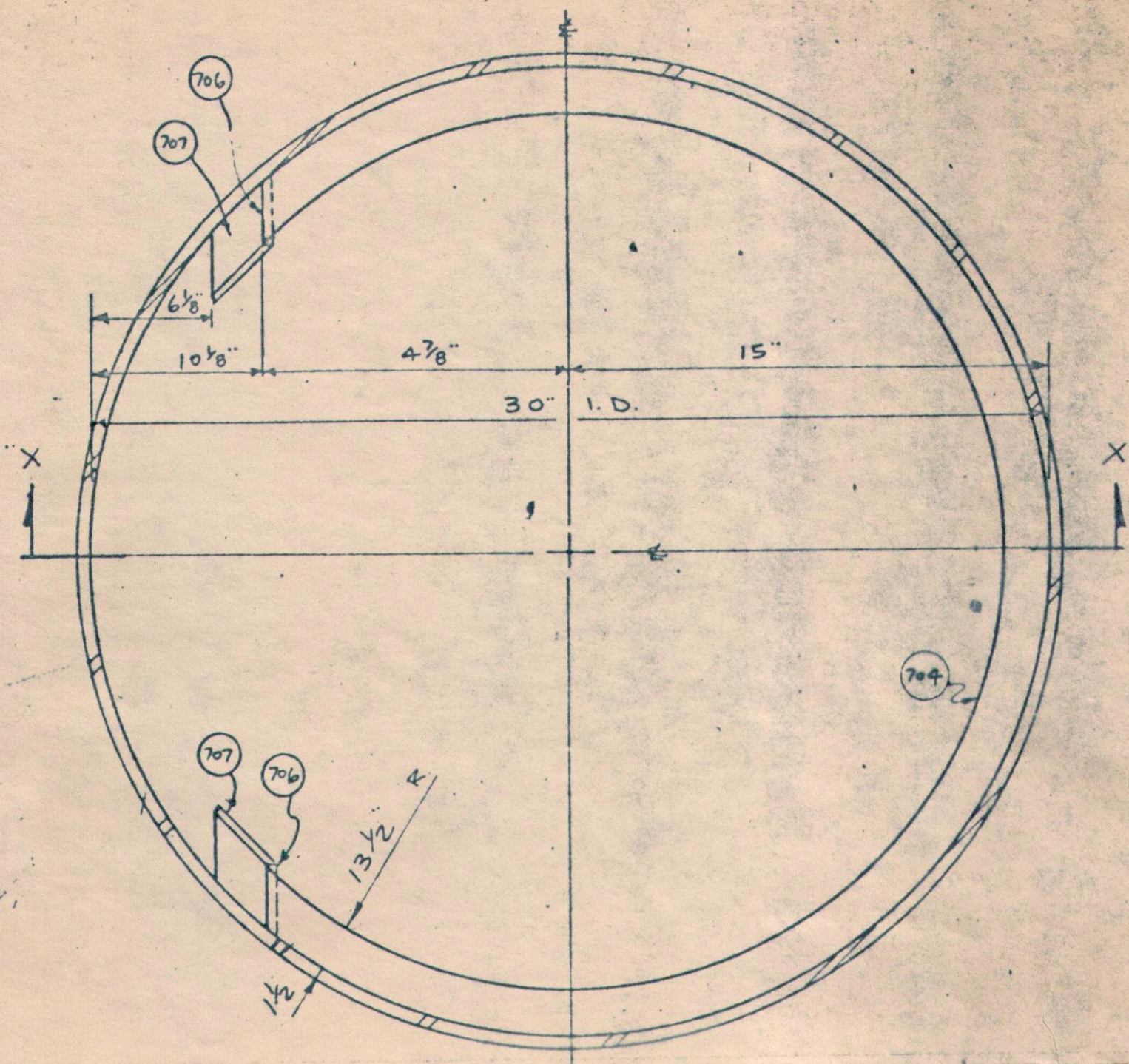
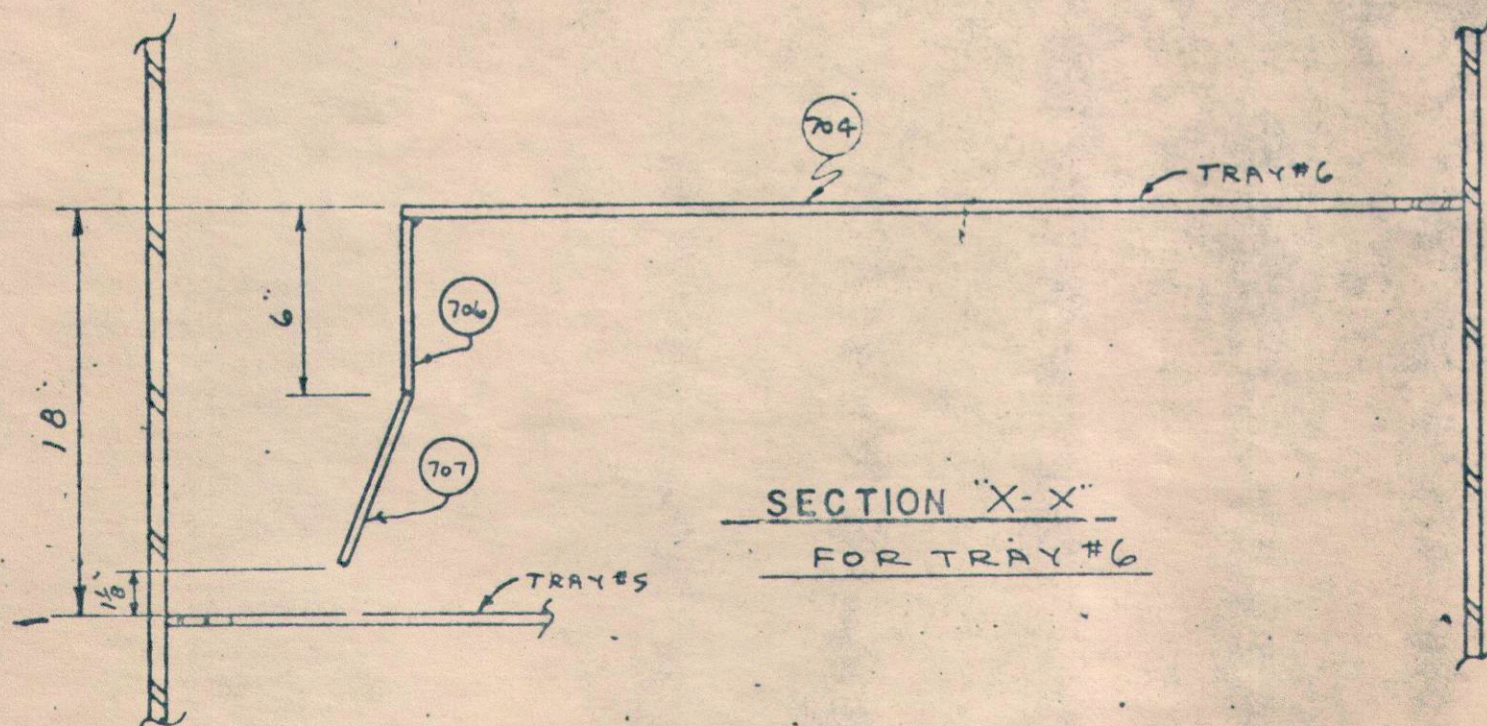


22009E. MAY PLAN VIEW. a



PLAN VIEW FOR  
TRAYS NO. 6  
(EVEN NO. TRAYS ROTATED 180 FROM ODD NO. TRAYS)



SHOP NOTES:

1. MAXIMUM TRAY SUPPORT LEVEL DEVIATION IS  $\frac{1}{8}$ " TOTAL ACROSS COLUMN DIAMETER.
2. ALL WELD-IN MATERIAL TO BE  $\frac{1}{4}$ " THK. 316 SS. FURNISHED BY OTHERS.
3. ALL WELDS TO BE FULL STRENGTH PLUS VESSEL CORR. ALLOWANCE WITH TOP SIDE OF RINGS & UNDERNEATH SIDE OF BARS TO HAVE CONT. SEAL WELD TO PREVENT VAPOR PASSAGE.

U.S. STEEL JOB 535-0138  
U.P. 33020-0501-108-2981

NO.	REVISIONS	DATE	BY
	(TRAY #6 WAS ON SHEET #4)	3-18-70	E.D.
	GEN. REV. PER CUST. APPROVAL DWGS		

NUTTER ENGINEERING COMPANY  
TULSA, OKLA.

ASSEMBLY OF WELD-IN PARTS  
FOR A 10-TRAY- 30" I.D.  
BUTANOL DEHYDRATION COLUMN  
ITEM: T-71 P.O.#33020-0501-108  
CATALYTIC CONSTRUCTION CORP.

APPROVED FOR LAYOUT ONLY

CATALYTIC CONSTRUCTION CO.

Date APR 14 1970

ORIGINAL SIGNED BY

Signed S. C. LAMB

Engineering Department

All details and dimensions are the responsibility of the vendor. Proceed with fabrication. This approval does not relieve vendor of the obligation to meet specifications and all other terms and conditions of the subcontract or purchase order.

CERTIFIED DRAWING  
NUTTER ENGR. CO., INC.

MAR 20 1970

GATE

DRAWN B.D.	DATE 2-12-70	SCALE NONE	JOB NO. 70-3181
CHKD: OHB	APPR: [Signature]	REV. NO. 1	SHT. NO. 8