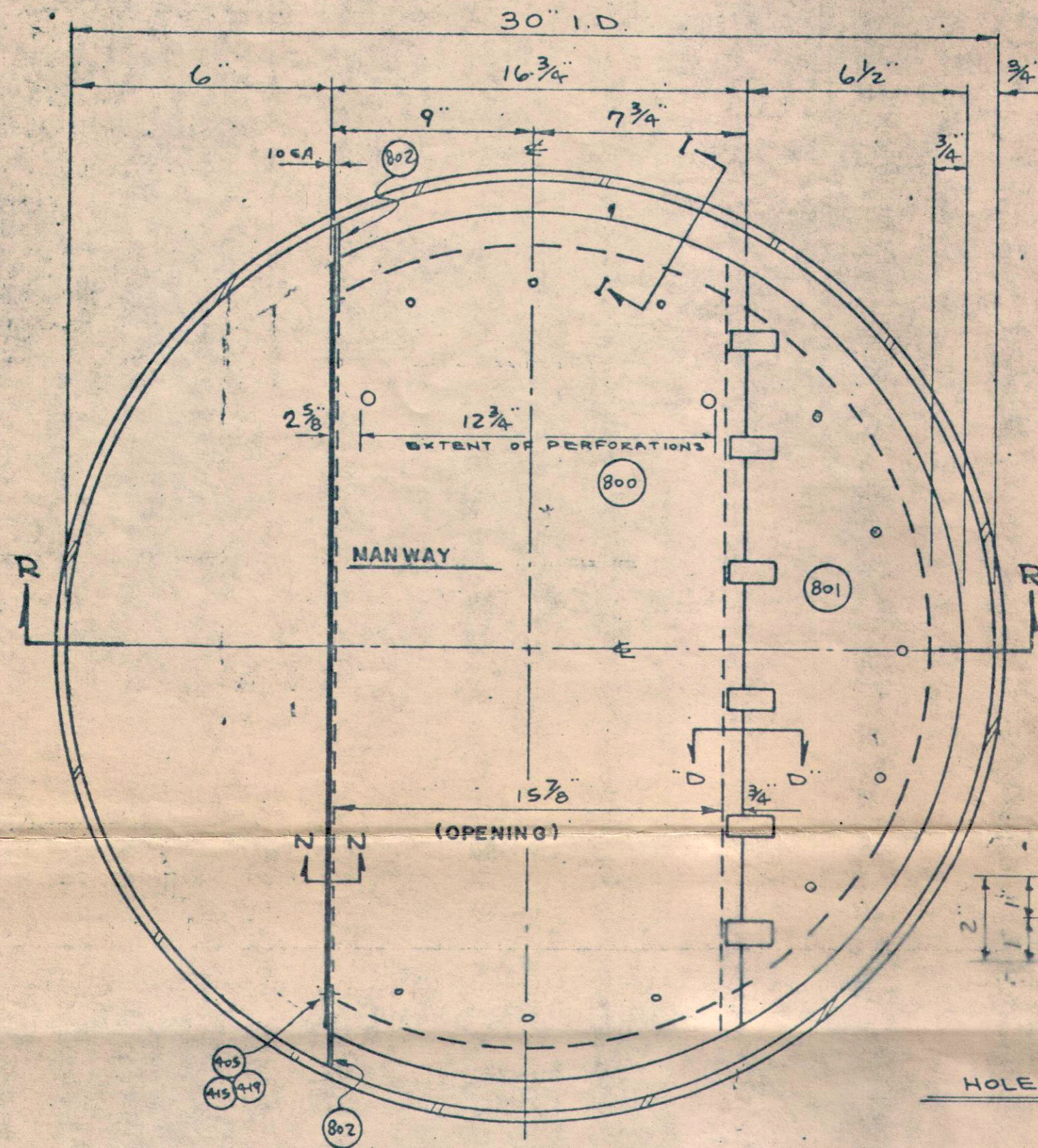
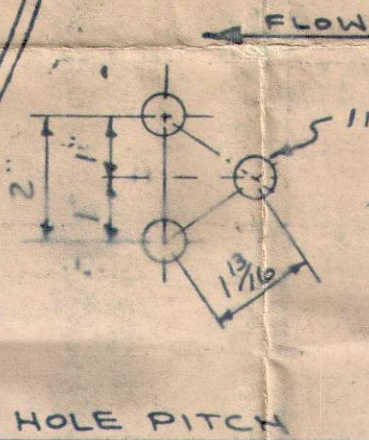


220098. TRAY PLAN VIEW

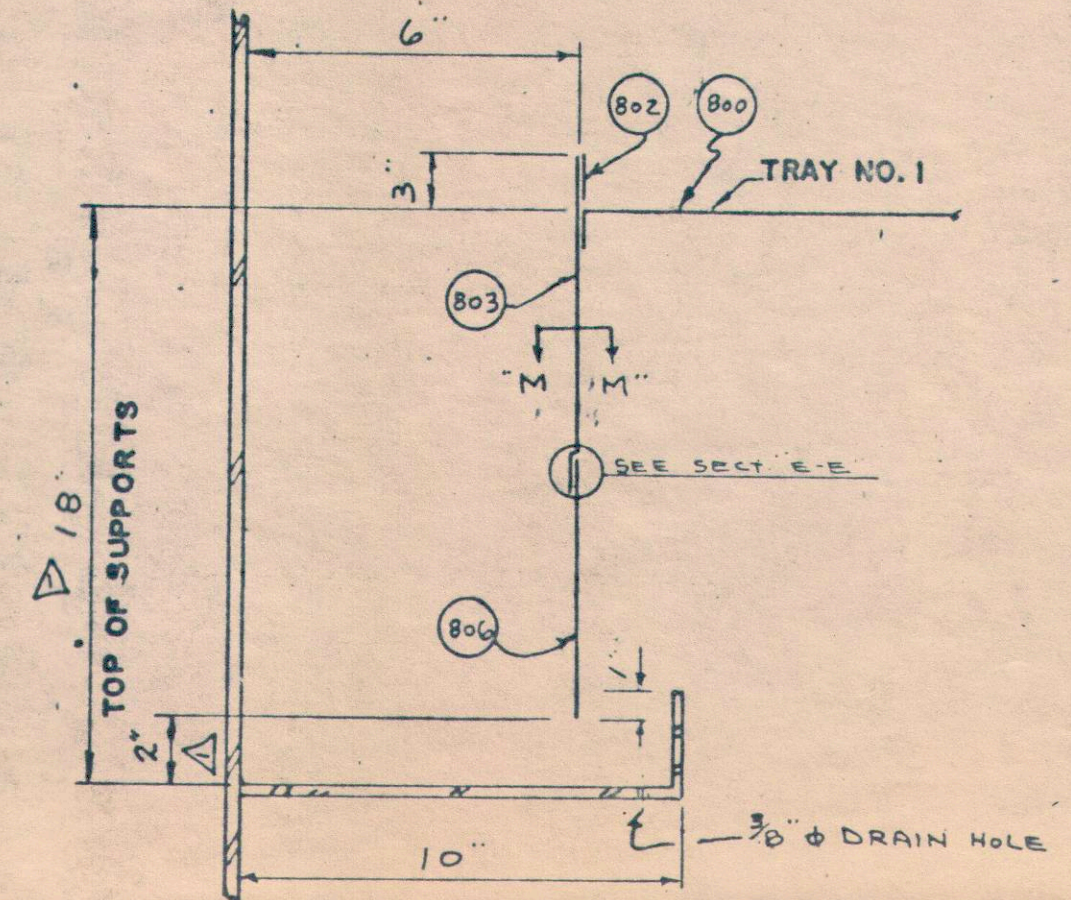


PLAN VIEW FOR TRAYS
NO. 1 THRU NO. 5
(EVEN NO. TRAYS ROTATED 180 FROM ODD NO. TRAYS)



HOLE PITCH

115 - 3/4" ϕ FREE HOLES ($\pm 3\%$) PUNCHED FROM TOP SIDE & MARKED TOPSIDE (BY NUTTER) NO GAGGING IS REQ'D



SECTION "R-R"
FOR TRAY NO. 1

GENERAL NOTES:

1. TRAYS TO BE INSTALLED THRU SHELL FLANGES.
2. ALL TRAY COMPONENTS TO BE PIECE MARKED BY NUTTER
3. TRAY MATERIAL TO BE 10 GA. 316 S.S.
4. HARDWARE TO BE 316 S.S.
5. BOLTING TO BE 316 S.S.
6. PAINT CIRCLES AROUND ALL PERFORATIONS TO BE USED FOR CLAMPS.
7. TRAY MANWAYS ARE REMOVABLE FROM TOP OR BOTTOM.

U.S. STEEL JOB 535-0138
V.P. 33020-0501-108-1R2

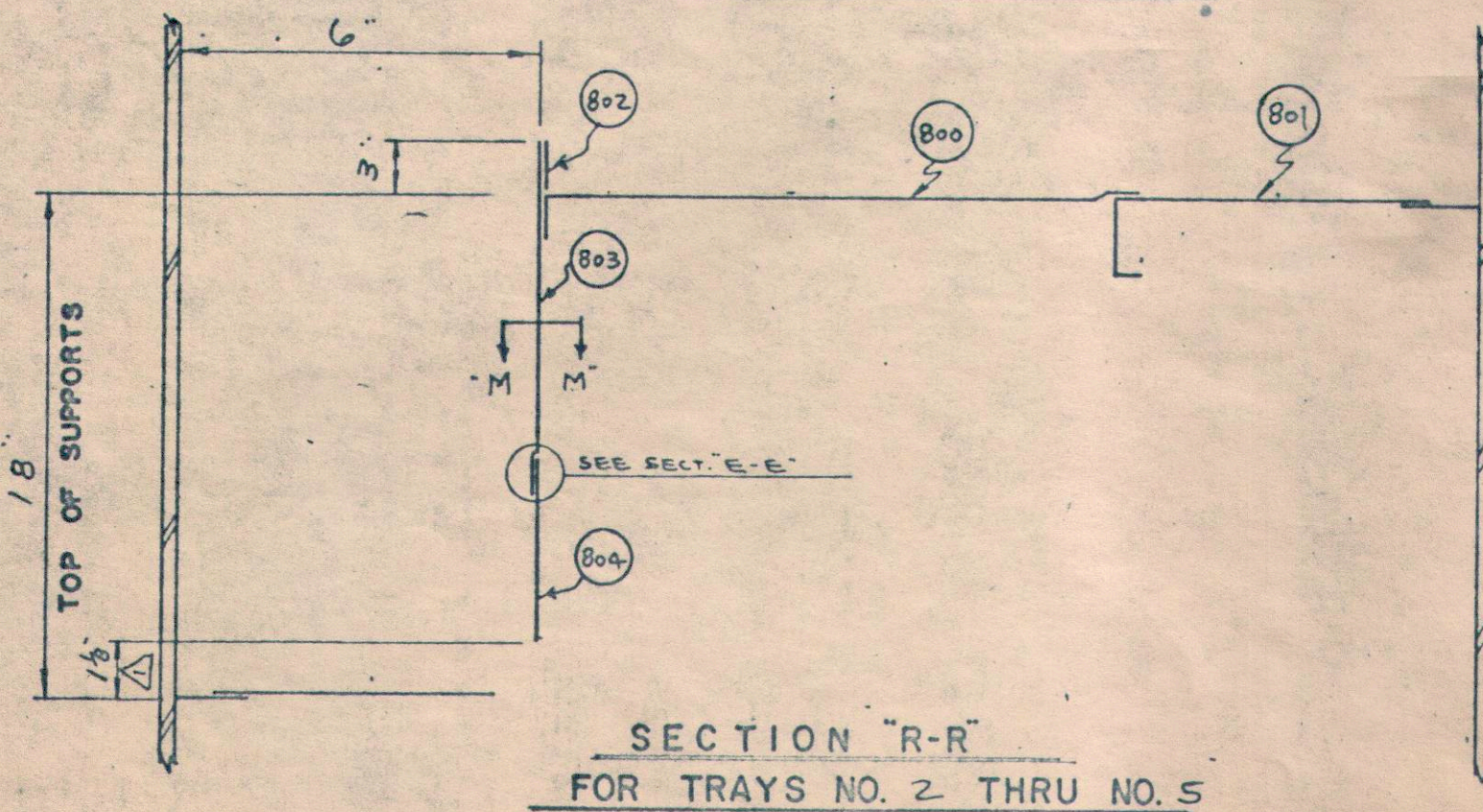
APPROVED FOR LAYOUT ONLY

CATALYTIC CONSTRUCTION CO.
Date: APR 14 1970
ORIGINAL SIGNED BY
S. C. LAMB
Engineering Department

All details and dimensions are the responsibility of the vendor. Proceed with fabrication. This approval does not relieve vendor of the obligation to meet specifications and all other terms and conditions of the subcontract or purchase order.

CERTIFIED DRAWING
NUTTER ENGR. CO., INC.
MAR 20 1970
DATE: *EML*

APPROVAL DWGS.	3-18-70 B.D.	
GEN. REV. PER CUST.		
NO.	REVISIONS	DATE BY
NUTTER ENGINEERING COMPANY TULSA, OKLA.		
ASSEMBLY OF REMOVABLE PARTS FOR A 10-TRAY-30" I.D. BUTANOL DEHYDRATION COLUMN ITEM: T-71 P.O.#33020-0501-108		
CATALYTIC CONSTRUCTION CORP.		
DRAWN B.D.	DATE 2-12-70	SCALE None JOB NO. 70-3181
CHKD: THE	APPR: J	REV. NO. 1 SHT. NO. 1



SECTION "R-R"
FOR TRAYS NO. 2 THRU NO. 5